

The

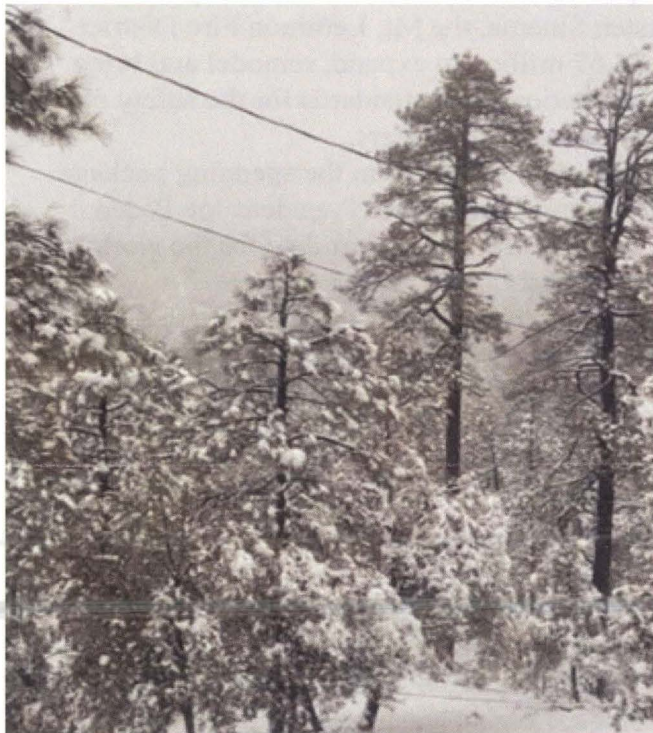
Mt. Lemmon Echoes

A publication of the Mt. Lemmon Homeowners Association

mtlemmonhoa.org

Mountain Winter: Pleasure and Pain

*Is General Hitchcock Open or Closed?
Depends on Who's Asking and When*



Willow Canyon resident Sally Crum captured this fetching scene outside her cabin door. (More on the mountain's winter, Page 3.)

Winter's full force and fury has hit Mt. Lemmon, leading to a season of contrasts: the brilliant beauty of the snow-coated forest vs. the trial of closed roads and power outages; the splendidly quiet weekdays vs. the chaotic weekends filled with desert visitors; the delight of a roaring fire vs. the outdoor brace of cold and wind.

"This one was a doozy," Mitch Cusolito wrote on Nextdoor after the Jan. 20 snowfall. Cusolito and others expressed thanks to the

Pima County plowing crews for quick coordination and work.

General Hitchcock Highway has variously been closed to all, open to residents and workers with 4-wheel or all-wheel drive, and, when open, always with a warning to watch for icy spots all the way up. Such conditions are expected to continue for a few weeks or even a couple of months.

The latest road conditions are posted regularly on the Pima County Sheriff's hotline, at 520 547-7510.

Save Date for Annual Dinner, and Renew HOA Membership

Save April 25 to attend the Mt. Lemmon Homeowners Association annual dinner, to be held at the Doubletree Hotel in Tucson. Details in the March issue of *The Echoes*.

And, it's time to start or renew membership in the MLHOA. Clip the coupon on the last page of this month's *Echoes* and mail it with your check to the address on the coupon.

Tell your friends and neighbors to join and have a say in what's happening with our Mt. Lemmon community.

Fire District Gets \$1.6M in Funding



An artist's rendering of what the Mt. Lemmon Fire District's upgraded station will look like with federal funding approved in December. Story Page 2.

Young'uns, Think Summer for Kids Club Activities



By Christine Grossman
Sky Island Kids Club Adviser

Welcome back, families!

The Sky Island Kids Club is for families, especially children, to come together to play and learn about the mountain. The club is a way to get to know each other and create a bond of community at generational levels. This summer will be the time for more social gatherings and fun.

Make sure you are on the contact list via email, Facebook or Nextdoor. If you are new to Mt. Lemmon, send a message to me, christina@grossman.com, to be updated for the summer events schedule.

A list of events for this year will be published in the May issue of *The Echoes*.

We look forward to seeing both new and familiar faces.

Fire District Wins \$1.6M Appropriation to Upgrade, Expand

By John Perchorowicz

Mt. Lemmon Fire District Board Chairman

Thanks to an appropriation received via the work of former Congresswoman Anne Kirkpatrick and U.S. Sens. Mark Kelly and Kyrsten Sinema, the Mt. Lemmon Fire District has \$1.67 million to expand, remodel and bring the fire station up to standards for the safety of employees and volunteers.

The money will come in the spending package that Congress passed and President Joe Biden signed in December. A start date for the work has not been established.

This was a team effort, and we want to thank those who contributed to bring this about:

Mt. Lemmon Fire District Board members: Todd Canale, Teri Carpenter, Dennis Cozzetti, Sally Crum, Tony Mazza, Tom McNurlin, John Perchorowicz, Jim Rollins.

Strategic Plan: Austen Stowe, Bill Brown, Bob Zimmerman, Carol Mack, Cathie Brown, Christopher Straub, Deborah Straub, Dennis Anderson, Gordon Hunter, Grey Carpenter, Jenni Zimmerman, Jennifer Shacter, John Mulay, Joyce Anderson, Leigh Thrasher, Linda Currin, Linda Mulay, Lou Crum, Patty Thomas, Peter Norton, Scott Lowing, Shane Clark, Stephen Brigham, Stu Shacter, Sue Clark, and Tom Thomas.

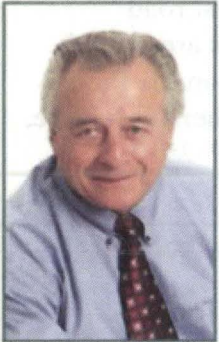
Task Force: Joe Gunia, Fred Knapp, Dan Leade, Diana Osborne, John Perchorowicz.

Conceptual Design: Paul Mickelberg, Robert Ortiz, T John Price.

Proposal: Joe Gunia, Henry Johnson, Dan Leade, Diana, John and Valerie Osborne, John Perchorowicz, Ann Marie Wolf.

Letters of Support: Joyce Anderson, Beth Borozan, Bill Brown, Teri Carpenter, Steve Christy, Linda Currin, Gail Paulin, Amy Schoenherr.

Funding: Karla Avalos, Ron Barber, Arielle Devorah, David Gowen, Mark Kelly, Anne Kirkpatrick, William Kovacs, Vince Leach, Joe Russell, Kyrsten Sinema, Daniel Winkler, Sierra Yamanaka.



George R. Reitz
 Realtor®
 Multi Million Dollar Producer

Home/Office: (520) 722-1265
 Cell Phone: (520) 444-1439
 Fax: (520) 721-9301
 greitz2@cox.net

Real Estate
 Marketing Professionals
 of Tucson

7387 E. Tanque Verde Rd., Tucson, AZ 85715



Mt Lemmon Coffee Bean
 Wednesday-Sunday
 7am-3pm

12903 N Sabino Canyon Pkwy #16
 520-395-3200

Wakin Up With the Bean

Winter Wonderland, as in, Wonder Who Cleans the Land

Story and Photos by Winter Correspondent Michael Stanley

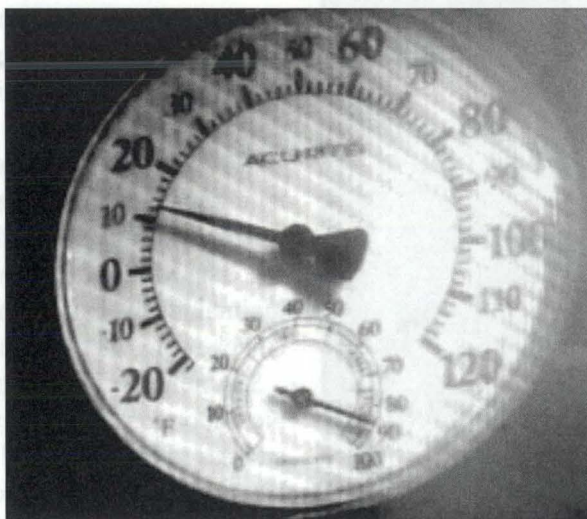
The year started with a big weather system sent from California. The winds whipped to 60 mph, and the heavy snow was driven sideways for almost two days.

Branches and even whole trees were blown down, causing power outages on parts of the mountain. Finally, the sun came out while flurries persisted.

Measurements of snow ranged from 8 to 16 inches.

A frozen layer of ice made plowing and removal difficult, leaving some interior roads impassable. Crews from the Pima County Department of Transportation had their hands full.

The crews looked like ants, with blowers, plows and other equipment moving through the wet, sticky white stuff. But talk about beauty! The fresh



Yes, Michael Stanley's thermometer read 11 degrees one January morning.

snow was a sight to see, and the moon reflected with a glow seldom seen.

The highway was closed to normal traffic for a day or so, then floods of skiers made their way to Ski Valley on Jan. 5. The roads, pulloffs and parking lots were filled to capacity even before the weekend.

As anticipated, the crowds of visitors overwhelmed mountain services,

and eventually, road access was limited at the base to only replacements for those departing. Some of the visitors were a little hostile, but most often, people were courteous and just looking to have fun.

We continue to have significant issues with trash being left virtually everywhere on the mountain, inadequate restroom

facilities, traffic congestion and parking.

With thousands of visitors flocking to the mountain over a few short days, we need a plan and personnel to deal with human waste, diapers, food wrappings, beer cans and plastic bottles, sleds, trash and sometimes even furniture left behind that presumably was for someone's enjoyment.

Even though we as a community have worked tirelessly to solve these problems, they persist.

Who's responsible for proposing and following through with solutions?

My hope is that next year, with help, our fragile community will witness at least one of these issues solved.

Have ideas for how to solve some of the problems outlined above?

Email: chihak.echoes@gmail.com and we'll pass along to the HOA and print some, with your names.

Mountain Traffic Jam

At right, vehicles clog the road leading into the village of Summerhaven on a recent weekend. Desert dwellers by the thousands came to play in the snow.



February Calendar

- 1, 15 - Nature hikes, Details and locations, Page 6, 9 am.
- 15 - ML Woman's Club coffee, Coffee Exchange, 6841 N. Camino Principal at Tanque Verde Road, 10 am.
- 18 - Mountain meetings:
 - ML Water District Board, via Zoom, 8:30 am.
 - MLHOA Board, via Zoom, 10 am.
- 27 - ML Fire Board, Fire Station; live-streamed at mlfdaz.org, 4 pm.

M. C. Harmon Construction, LLC General Contractor

ROC 219566~221184~221185

520-576-1546 Voice

520-576-1116 Fax

****New email****

SelbyHarmon@aol.com



Tami Arthur
Licensed Massage Therapist,
Certified Lymphatic Therapist

massageinthepines.net
520-449-3339

Massage in the Pines

Helping bring balance to body and mind.

Stay Up to Date on Mountain Information

By Matthew Grossman

There are four online resources available to keep Mount Lemmon residents up to date between editions of *The Echoes*:

1. A Google Group has been set up to provide email updates. To join, send an e-mail to mtlemmon-hoa+subscribe@googlegroups.com.
2. The Mount Lemmon Homeowner's Association maintains a website at <https://mtlemmonhoa.org/>. Check it out, get informed, and contribute.
3. A neighborhood group has been set up on Nextdoor.com. Sign up using your cabin street address to be connected to the Mt. Lemmon group. If you already use Nextdoor for your valley neighborhood, you need to sign up for Mt. Lemmon under a different email address, because only one neighborhood is permitted per email address. This venue provides general information, worthwhile educational benefits and timely communication, especially during critical times, such as fire danger and road closures.
4. MLFDAZ.org is the web address for our Fire Department. On the home page, under the Resources tab, is Firewise. This tab takes you to the compilation of the important Firewise information and forms. This includes an Action List for Property Owners, a Community Communications form, cheatgrass and bark beetle identification, and even more information to help keep your cabin and community safe.

Contribute to *The Echoes*

The Mt. Lemmon Echoes is published by the Mt. Lemmon Homeowners Association 10 times a year, February through December.

The deadline for story, photo and announcement submissions for the March issue will be Feb. 14.

If you have a story or an idea for a story and need help writing it, send an email to chihak.echoes@gmail.com.

If you have stories, announcements and items for the monthly events calendar, email them in Word documents to chihak.echoes@gmail.com.

Send photos and other artwork in jpeg files attached to emails.

To advertise in *The Echoes*, contact Anne Skelley, 520 429-9199, or sgca819@gmail.com.

MLHOA President's Report: Thanks to County, Volunteers

"The greatness of a community is most accurately measured by the compassionate actions of its members."

- Coretta Scott King

**By Sally Crum
MLHOA President**

Looking out at the falling snow from inside my snug little cabin once again reminds me of how fortunate we are to be part of this community in this little piece of heaven. The moisture we have received with the rain and the snow is helping to raise our water levels and reduce the drought's effects.

There is so much to be

grateful for as we begin 2023.

With the snow has come the challenge of the Pima County Department of Transportation to keep our county-maintained roads open for public access and emergency services. The Roads/Plowing Work Group met several times after the town hall meeting in October to determine priorities and set up communication channels. Thanks to Mitch and Shannon Cusolito for stepping up to be the primary contacts with county transportation as we work through the learning curve.

County transportation has

done very well in both learning and doing. Thanks to the U.S. Forest Service and volunteers who have been picking up the enormous amount of trash left behind by our many visitors.

Pima County Sheriff's Auxiliary volunteers will be handing out trash bags and reminders at the base of the mountain as they control traffic. Make sure to thank them.

The MLHOA Executive Board will meet in February to begin planning for 2023.

Our first event will be the MLHOA annual dinner on April 25 at the Doubletree Hotel on South Alvernon Way in Tucson.

Woman's Club Winter

By Sandi Triplett

The Mt. Lemmon Woman's Club has had an active winter.

We celebrated our holiday brunch at Ventana Canyon on Dec. 3, where we collected new, unwrapped gifts for a Christmas Party by "More Than a Bed," a charity with the goal of seeing that every child in the foster care system has a safe place to call home.

Monthly coffee was Jan. 10 at Coffee Exchange, at Camino Principal and Tanque Verde. The February coffee will be there, also, on the 15th, starting at 10 a.m.

Our state convention will be held in Mesa May 5-7. We will have more information at the February coffee.



Mt. Lemmon Woman's Club had a full house for the December Holiday Brunch, held at Ventana Canyon resort in Tucson.

COMING SOON

CROWN OF THE SANTA CATALINAS

Mount Lemmon Lodge

EST. 2021 ELEV. 7,700'

SUMMERHAVEN, ARIZONA

ROOMS BEYOND BREAD GIFTS

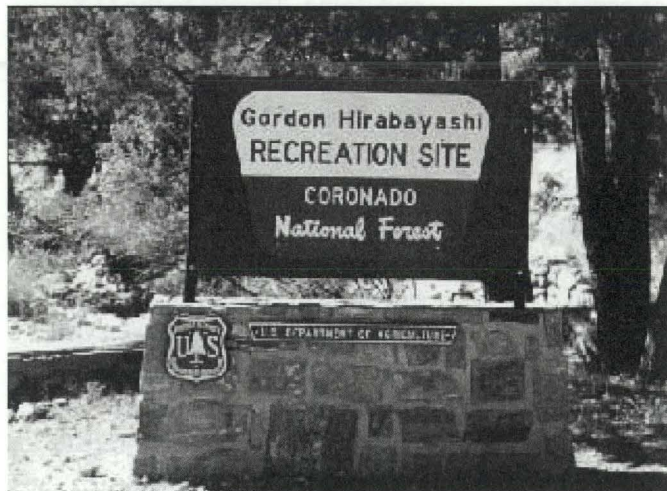
MOUNTLEMMONLODGE.COM

The Living Rainbow, Inc.

P.O. Box 753, 12789 Sabino Canyon Pkwy.
Mt. Lemmon, AZ 85619
(520) 576-1519
rainbowz@mindspring.com
Debbie Fagan

Gifts • Windchimes • Aspen Fire Art
Proudly in business since 1979
"You Can't Sink A Rainbow"

February Nature Hikes at Hirabayashi, Rose Canyon



Two nature hikes to be led by naturalist Cathy Yungbluth have been scheduled for February, and they will depend on weather conditions.

The first hike is scheduled for Feb. 1 starting at 9 a.m. at the Gordon Hirabayashi campground near General Hitchcock Highway Milepost 7. Hike leader Youngbluth, a volunteer with Sabino Naturalists, described the hike as an easy 2.5 miles total, with a 200-foot elevation change. Participants should meet at the parking area.

The Feb. 15 hike is scheduled for Rose Canyon Lake, at Milepost 17, starting at 9 a.m. Yungbluth will lead hikers for a total of 3.5 miles and a 300-foot elevation change. She described the hike as easy to moderate. Park at the highway entrance.

Three more hikes are scheduled for March, including at the Palisades Visitor Center on March 1, Mt. Bigelow on March 15 and Box Camp on March 29. Two nature hikes are scheduled the next month, April 5 on the Green Mountain Trail and April 19 at Sunset Trail.

See future issues of *The Echoes* for more details on the March and April hikes.

Yungbluth said hikes can be canceled when the highway is closed or there are vehicle restrictions and inclement weather conditions on trails.

She suggested checking the calendar at sabinonaturalists.org for more information, or sending an email cathyyoungbluth@gmail.com.

Wear appropriate layered clothing, sun protection and waterproof boots or shoes. Bring water and, if desired, snacks or other food.

Forest Service Reminder: Control Road Is Closed

The U.S. Forest Service reminded that the mountain community that the Control Road, or the back road to and from Mt. Lemmon, is closed for the season, from Milepost 21.4 to Milepost 27.8. Reopening is scheduled for March 1.

"Driving on the Control Road during this closure can, and will, result in a citation," the Forest Service said in a statement. "The closure is in effect and enforceable even if the gate is open."

Everything You Need To Know About Mt. Lemmon HOA

The Mt. Lemmon Homeowners Association was formed in 1969 to protect the welfare of the Mt. Lemmon community and to be involved in all aspects of its improvement.

MLHOA's concerns are those of private property owner and the general mountain community.

Full membership with voting rights is accorded to private owners and leased landholders upon payment of yearly dues (*see Page 12 for the membership coupon*). Renters and friends of the mountain can be non-voting members.

Being organized, having a legal fund and having active local participation enables the association to accomplish its goals.

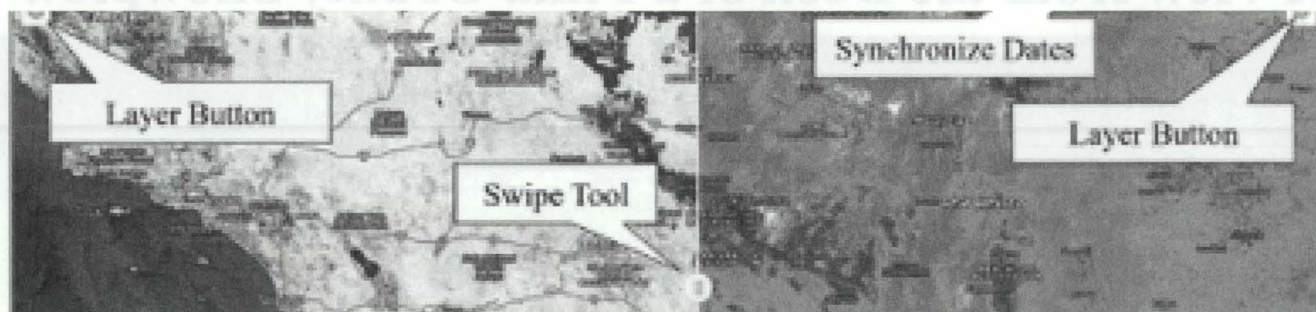
Pima County has called the MLHOA the strongest and most respected homeowners' association in the county.

Board of directors: Sally Crum, president; Jenni Zimmerman, vice president; Anne Skelley, treasurer; John Osborne, secretary; members at large Linda Currin, John Mulay, Peter Krauss, Kim McNurlin, Michael Singervalt, Tom Thomas and Matthew Grossman.

The Mt. Lemmon Echoes is the primary communication arm of the MLHOA. It is published 10 times a year, from February to November.

Advertising in *The Echoes* for 10 issues is \$100 for a business card, \$250 for a quarter-page and \$500 for a half-page. To advertise, contact Anne Skelley, 520 429-9199, or sgca819@gmail.com.

DroughtView: How UA Scientists Report Environmental Data



By Christina Grossman

University of Arizona environmental scientists have created two websites to report and share data on drought, wildfire and snowfall.

The websites were debuted on Mt. Lemmon last fall at a Mt. Lemmon Woman's Club lecture by Willem van Leeuwen, interim director of the UA School of Natural Resources and the Environment.

The first website, pictured above, is called droughtview.arizona.edu, and carries data on drought and fire from around the globe. Most relevant is that it can zero in on local areas, including our own mountain. There is an easy-to-use tutorial on the front page of the website.

The second website is snowview.arizona.edu, which provides data on - of course - snowfall,

how it is measured and how snowmelt affects forests, including Mt. Lemmon. It includes photos, graphs and other pertinent information.

Both of these resources should bring out the scientist in all of us, especially when we can share it with our younger generation.

We should not rely solely on other people or entities in being advocates for our mountain environment. With climate change upon us, it is of utmost importance to inform ourselves, our community, visitors and children about how to preserve and conserve the resources that the Santa Catalina Mountains provide.

We can have a greater impact on our mountains when we connect research to our own practices and lives, leading us to effective decisions for the present and the future.

SAVE THE DATE 2023 TRICO ANNUAL MEETING

SATURDAY, APRIL 1, 2023 • 11AM
CASINO DEL SOL RESORT
5655 W. VALENCIA RD.

- 9 a.m. Registration opens
- 9-11 a.m. Informational Booths and Workshops
- **11 a.m. Meeting starts**
- Please bring a copy of your bill for fast check in
- Win raffle prizes (must be present to win)
- Trees will be available for purchase

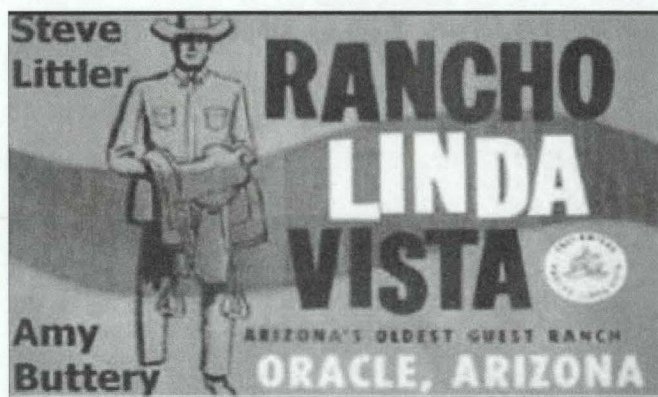


(520) 744-2944 • www.trico.coop

f /tricoelectric @ /tricoelectricAZ

Trico is an equal opportunity provider and employer.

A Touchstone Energy® Cooperative



P.O. Box # 32683

Tucson, AZ 85751

Estab.



1984

"Your Dependable Truckers of Tucson"

www.deserttrucking.com

John "J.J." Johnson

Cell (520) 449-8800

Fax (520) 690-0011

Transfers

Super 16 & 18

Semi's & Bellys

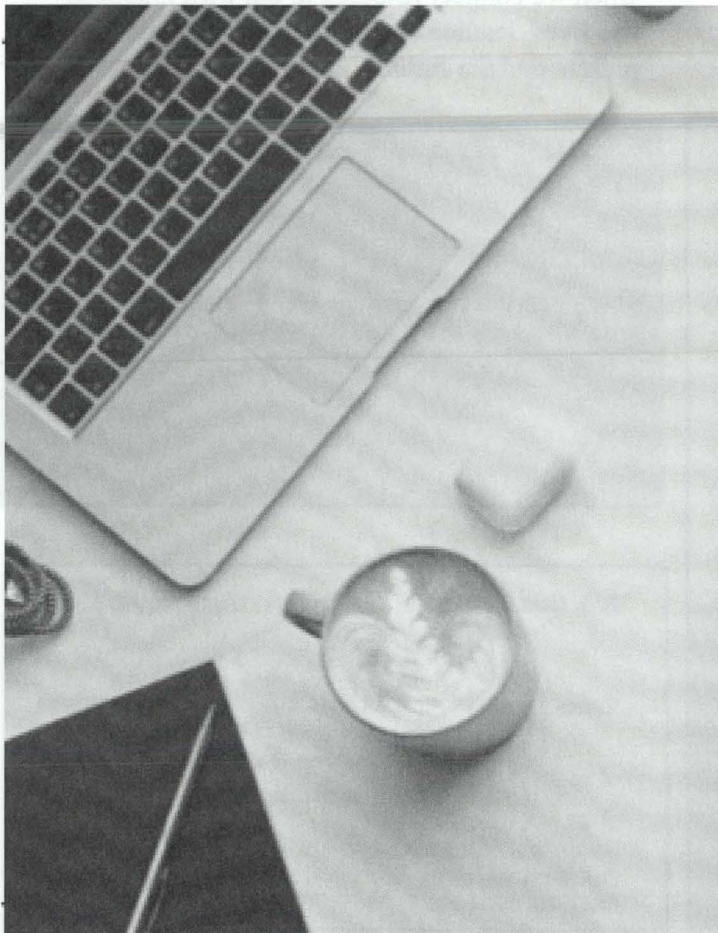
10 & 12 Wheel Dumps

A View from the Deck of a Pima County Snowplow



This big plow makes its way along one of many snow-covered Mt. Lemmon roads after a major

snowfall. (Photo courtesy of the Pima County Department of Transportation.)



simply bits
INTERNET • VOICE • FAX

High Speed Internet
for your home

Avoid the
Seasonal Rush!
Schedule your Installation
Today!
Call (520) 545-0400
or visit www.simplybits.com

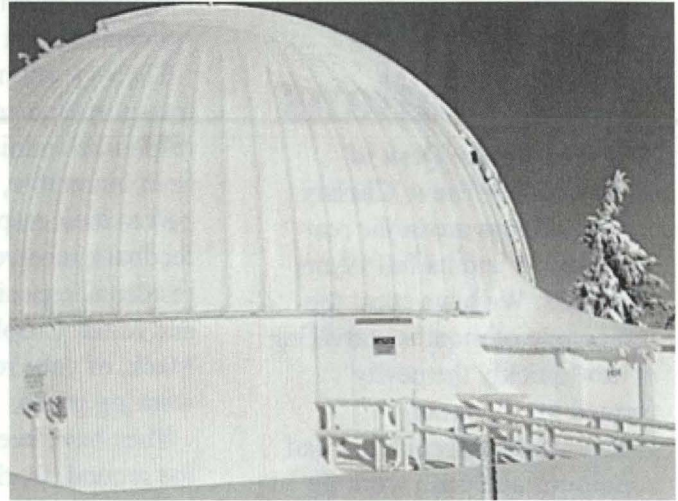
Forest Service Fire Prevention Continues Through Winter

Forest Service crews and contractors have completed hand thinning and stacking slash piles in the Bear Wallow/Box Camp area on about 285 acres, Santa Catalina District officials said in an email. Burning of the piles will likely occur next winter, the email said.

Another 25 acres have been thinned and slash piles stacked south of Summerhaven.

"Pile burning in the Marshall Gulch area will commence once some of the snow comes off and we can get better consumption of the piles," officials said in the email.

If snow melts sufficiently near the Mt. Lemmon Observatory, forest thinning might begin there in the last two weeks of February, the officials said.




Once snow melts a bit near the Mt. Lemmon Observatory, above, forest crews will begin thinning work. Slash piles like those at left are being stacked in the Bear Wallow/Box Camp area for burning, likely next winter.




Sky Island Construction
BUILDING HOMES ON MT LEMMON AND TUCSON

NEW ROOM ADDITIONS • INTERIOR ROOM REMODELS
GARAGE ENCLOSURES, PAINTING / STAINING SERVICES
LOG CABINS & REDWOOD DECKS

GREGG FERGUSON
OFFICE: 471.6322
AZ ROC# 163522


SKYISLANDCABINS@AOL.COM



 CHAIRMAN, NATURAL RESOURCES,
ENERGY & WATER
VICE CHAIRMAN, FEDERAL RELATIONS
HEALTH & HUMAN SERVICES
MILITARY & VETERANS AFFAIRS

GAIL GRIFFIN
MEMBER, DISTRICT 14

ARIZONA
HOUSE OF REPRESENTATIVES
1700 W. WASHINGTON STREET, STE. H
PHOENIX, ARIZONA 85007-2844

CAPITOL: (602) 926-5895
TOLL FREE: 1(800) 352-8404
TUCSON: (520) 398-6000
ggriffin@azleg.gov



dennis cozzetti
cozzetti construction inc
520 665-1648
dennis@cozzetticonstruction.com

Snow Crew Exceeds Expectations

From the Desk of
Supervisor Steve Christy

The holidays are in the rear view mirror and its full steam into 2023. We have spent the last couple of months marveling at how quickly the newly formed Mt. Lemmon Homeowners Association road conditions and trash working groups have benefited the community.

Last November, there was cautious optimism about the transition of snow removal responsibilities to the Pima County Department of

Transportation. There were concerns about the level and timeliness of service that residents would receive.

The way our mountain transportation crew has responded to this challenge has been incredible, thanks in large part to their responsiveness to feedback received from village residents, especially Shannon and Mitch Cusolito and Leanne Mack, of your road conditions working group.

They have been the boots on the ground, working with residents and the county transportation crew, communicating as only those in close proximity can do to get results. Also, they have done a great job working with the sheriff's deputies to broadcast

current road conditions.

Recently I saw a TV news report that emphasized the need for mountain visitors to be mindful of their surroundings and dispose of their trash responsibly.

Visit Mt. Lemmon provided photos of broken sleighs, bottles, cans and other trash left by snow visitors. Tucson residents learned about the General Store's display depicting how long it takes waste to decompose.

These groups' efforts reflect the mountain culture of caring for our community, and we salute their efforts.

Contact Supervisor Steve Christy at 520 724-8418 or district4@pima.gov.

Colorado Log Enterprises LLC

Log Home Restoration & Maintenance



"Increase the Value of Your
Dream Investment."

Permachink and Sashco
Zero Failure Certified

Owner
Cole Pavy
303.249.9299

Office
303.887.5065

www.coloradologenterprises.com

Year-End White Elephant Gift Exchange a Laugh Riot



A bird's-eye view of the crowd at the Mt. Lemmon White Elephant Party in December 2022. (Photo by Michael Stanley)

Fifty neighbors gathered Dec. 11 at the Tucson Hop Shop for the annual Mt. Lemmon White Elephant Party, co-hosted by Sally Crum and Laura Mance.

A gourmet pizza buffet provided by Ciao Down Pizza was sponsored by Laura Mance and the Mt. Lemmon Lodge.

The gift exchange was hilarious, as always, with the White Elephant going to Diane Osborne.

Diane will plan the next White Elephant, to be held come December at the new Mt. Lemmon Lodge.

5 Reasons to list with Mount Lemmon Realty

- We have specialized in selling Real Estate on Mt. Lemmon since 1940
- We are family owned. We have four licensed agents, two with their Brokers License
- We have the BEST knowledge of Mt. Lemmon
- We are experts on selling vacant lots, cabins, and Forest Service cabins
- We are involved in the Mt. Lemmon Businesses & Pima County



www.MountLemmonRealty.com

Call the office at 520-576-1333

Mt. Lemmon Homeowner's Assoc.
P.O. Box 699
Mt. Lemmon, AZ 85619

PRST STD
US POSTAGE
PAID
TUCSON, AZ
APS DIGITAL PRINT
85713



Renew Your MLHOA Membership for 2023

Mt. Lemmon Homeowners Association
Annual membership \$35, payable to MLHOA
Mail this form and your check to:
MLHOA
P.O. Box 699
Mt. Lemmon, AZ 85619

Name _____

Mailing address _____

City/State/ZIP _____

Mt. Lemmon street address _____

Home phone _____ Mt. Lemmon phone _____

Email address _____

Check one:

☐ Property owner ☐ Renter ☐ Friend of the mountain

February is the time to renew membership in the Mt. Lemmon Homeowners Association.

Clip out the form at right, fill out and mail with a check for \$35 to the address indicated.

Your membership entitles you to a subscription to *The Mt. Lemmon Echoes*, printed and mailed 10 times a year, February to November.

Your dues also support the work of the MLHOA Board in advocating for the Mt. Lemmon community. Private owners and leased landholders who have paid their dues have voting rights with the MLHOA.

If you have questions about your membership status or need to make an address change, contact Anne Skelley, 520 429-9199 or email her at sgca891@gmail.com.