

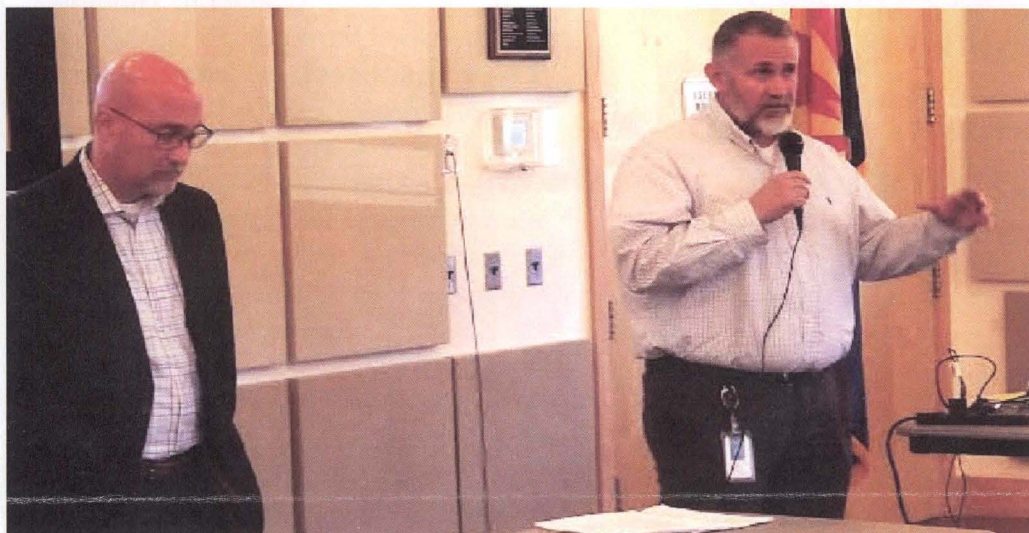
The

Mt. Lemmon Echoes

A publication of the Mt. Lemmon Homeowners Association

mtlemmonhoa.org

Working Groups to Take on Roads, Trash



Carmine DeBonis Jr., deputy Pima County administrator, left, listens to Matt Sierras, division manager in the county

Department of Transportation, respond to a question from the audience at the Oct. 26 town hall. (Photo by Michael Stanley)

Your Guide to Survive and Thrive this Winter

This issue of *The Echoes* includes several stories with tips and guidance for getting through the cold winter months.

* If your cabin will be unused for at least part of the season, shut off water, drain pipes and take other steps. *Details, Page 5.*

* Take special precautions when driving up, down and on mountain roads, including checking the Pima County road conditions hotline at 520 547-7510 before you go. *Details, Page 5.*

* Set up a security system, including cameras, to protect your property. *Details, Page 6.*

Prescribed Burning Delayed by Wetness

Prescribed burning in four areas on Mt. Lemmon has been delayed this fall because the mountain is wet, a Forest Service official said.

"Due to the amount of moisture we have received this fall, we have postponed burning until conditions dry," Forest Service Fire Management Officer Ian Morgan said in an email.

Morgan did not say when he expected the burning on about 350 acres plus slash piles along Turkey Run could begin.

Also delayed, likely into November, is thinning on 500 acres in six locations from below Spencer Canyon to Summerhaven.

Big MLHOA Crowd for First Town Hall

By Michael A. Chihak

Two residents' groups will be formed to work with Pima County on the mountain's road and trash issues, the Mt. Lemmon Homeowners Association's president said.

MLHOA President Sally Crum announced formation of the groups at the HOA's first town hall meeting with county officials on Oct. 26.

Ninety-five people took part in the two-hour meeting at the Community Center and live-streamed online.

"We will have five people on each working group (one for roads, one for trash), people with expertise and resources," Crum said.

"We see some sort of path forward. We're not going to be able to solve all these problems the way we want to. But we're gaining some traction. We're going to be able to communicate regularly with the county."

The impetus to form the working groups came amid myriad calls from the town hall audience for improved maintenance and snow plowing and a solution to trash accumulating in Summerhaven, other areas

Continued on Page 3

St. Nicholas to Visit Mt. Lemmon



Grace Linker brings a child to meet St. Nicholas, portrayed by Steve Nagy. (Photo by Mark Hinkle)

Come Meet a Saint

By Gene Kinghorn

St. Nicholas is coming to the mountain on Nov. 26, 1 p.m. to 3 p.m., at Mary Undoer of Knots Byzantine Catholic Shrine, 12849 N. Tucson Ave. All are welcome.

Throughout the centuries, many stories and legends have been told of St. Nicholas' life and deeds.

These accounts help us understand his extraordinary character and why he is so beloved and revered as a protector and helper of those in need.

In addition, he obeyed Jesus' words to "sell what you own and give the money to the poor." Nicholas used his whole inheritance to assist the needy, the sick and the suffering.

MLHOA Board Activity for October

By John Osborne
Board Secretary

HOA President: Sally Crum asked that questions for the Oct. 26 town hall go to her or Linda Currin. *Story, Page 1.*

Forest Service: Interim Ranger Chrissy Pearson said that tree planting has begun atop the mountain. Thinning and prescribed burning will begin soon.

Fire Department: Welcome to Aaron Lindflott, former reserve firefighter, now full-time. Congrats newlywed Sean Matias. Slash pile is full and closed.

Pima County: Beth Borozan said resurfacing was planned for mid October on Gen. Hitchcock Highway (Mt. Lemmon highway) from Milepost 1.5 to Milepost 3.

Water District: Reminder to cabin owners to shut off water, drain pipes before freezing weather. *Story, Page 5.*

Sheriff's Department: Deputy Sloan said no traffic crashes were reported on Gen. Hitchcock Highway in the last 30 days.



George R. Reitz
Realtor®
Multi Million Dollar Producer

Home/Office: (520) 722-1265
Cell Phone: (520) 444-1439
Fax: (520) 721-9301
greitz2@cox.net

Real Estate
Marketing Professionals
of Tucson

7387 E. Tanque Verde Rd., Tucson, AZ 85715

The Living Rainbow, Inc.

P.O. Box 753, 12789 Sabino Canyon Pkwy.
Mt. Lemmon, AZ 85619
(520) 576-1519
rainbowz@mindspring.com
Debbie Fagan



Gifts • Windchimes • Aspen Fire Art
Proudly in business since 1979
"You Can't Sink A Rainbow"



Mt Lemmon Coffee Bean
Wednesday-Sunday
7am-3pm

12903 N Sabino Canyon Pkwy #16
520-395-3200

Wakin Up With the Bean

COMING SOON

CROWN OF THE SANTA CATALINAS

Mount Lemmon
Lodge

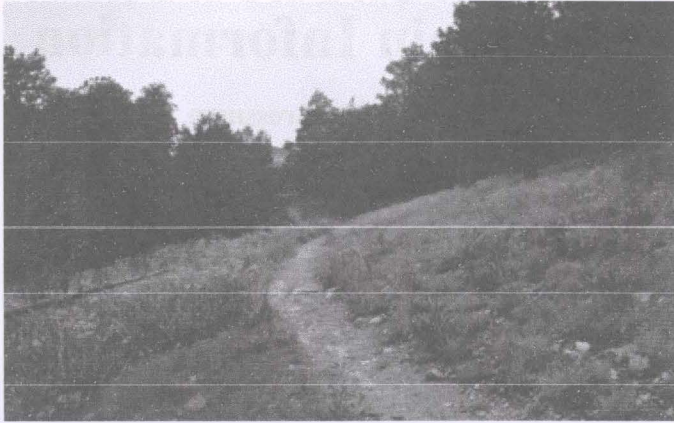
EST. 2021 ELEV. 7,700'

SUMMERHAVEN, ARIZONA

ROOMS BEYOND BREAD GIFTS

MOUNTLEMMONLODGE.COM

Weekly Nature Hike Schedule



Meadow Loop Trail was the scene of the first Nature Hike Oct. 26. (Photo courtesy of Forest Service)

'Exercise Bodies and Brains' In Mountain's Eight Biomes

Sabino Canyon Volunteer Naturalists will lead exploration of Mt. Lemmon trails and environment every Wednesday starting at 9 a.m.

"Exercise both bodies and brains in one or more of the eight biomes, as we discover the flora and fauna and learn the history that makes the Santa Catalina Mountains so special," volunteer naturalist and hike leader Cathy Yungbluth wrote.

Bring water, snacks, lunch for longer hikes. Wear supportive shoes and dress in layers. Binoculars and hiking poles are good accessories. No dogs or smoking. Children must be in company of adults.

Nov. 2: Aspen Draw Trail. Meet at Ski Valley parking lot; 3 miles, moderate to hard.

Nov. 9: Marshall Gulch and Lower Aspen Trail. Meet at Marshall Gulch; 4 miles, moderate.

Nov. 16: Butterfly Trail. Meet at Butterfly trailhead. 2.5 miles, moderate.

Nov. 23: Palisades Trail. Meet at Palisades Visitor Center; 3 miles, easy to moderate.

Nov. 30: Incinerator Ridge to Leopold Point. Meet at top of Incinerator Ridge Road; 2.5 miles, easy to moderate.

Dec. 7: Rose Canyon Lake to Munchkinland Trail; 4 miles, moderate.

Dec. 14: Gordon Hirabayashi/Sycamore Reservoir. Meet at farthest Gordon Hirabayashi parking lot; 5 miles; moderate to hard.

Dec. 21: Lower Bug Springs Trail. Meet at trailhead parking; 5 miles, moderate to hard.

Dec. 28: Molino Basin. Meet at basin; 4 miles, moderate.

Residents' Groups Will Work for Improvement

Continued from Page 1

and in the mountain's waterways.

Attending the meeting for Pima County were Deputy County Administrator Carmine DeBonis Jr.; Beth Borozan, Supervisor Steve Christy's chief of staff; and officials of the transportation and environmental services departments.

In response to questions about road maintenance and why some roads are county-maintained and, when it snows, are plowed, while others are not, DeBonis said the working groups can help.

"I'm not going to stand here and say we're going to take all those side roads, (maintain) and clear them," he said. "We will say that we're open to taking information and understanding that there are issues."

DeBonis said county officials will make certain residents know whom to contact at the county regarding various issues. Crum said the working groups will take the lead on that.

"It's very encouraging for Carmine (DeBonis) and others to see the discussions," Crum said. "Again, we're going to have working groups. If you have individual issues ... with roads, let's hold those," and the groups will begin meeting soon to resolve issues.

On trash pickup, DeBonis said the county does not collect trash in unincorporated areas. He acknowledged that because many Tucsonans and tourists visit Mt. Lemmon, trash issues are unique, with visitors leaving debris behind and residents not having a ready disposal system.

One part of the solution can be messaging to visitors and tourists "to be good stewards when they come to visit," he said.

The county ceased providing dumpsters at its wastewater treatment facility on the south end of Summerhaven in 2009, and there is no chance to re-establish that, DeBonis said.

County officials in attendance, Crum and audience members agreed that the issue is multi-dimensional and needs input from residents, the Fire District, the Forest Service and the county.

DeBonis said working groups such as those being formed for roads and trash are successful in other areas of supervisors' District 4 and can be the same on the mountain.

November Calendar

- 2, 9, 16, 23, 30 - Nature hikes,
Details, locations, Page 3, 9am
- 8 - General Election, Voting at MLCC,
6am-7pm
- 19 - Mountain meetings:
- ML Water District Board,
Zimmerman School, 8am,
- MLHOA Board, via Zoom, 10am
- ML Woman's Club, Location to be
announced, 1pm
- 21 - ML Fire Board, Fire Station; live-
streamed at mlfdaz.org, 4pm
- 26 - St. Nicholas party, Mary Undoer
of Knots Shrine, 1-3pm

M. C. Harmon Construction, LLC

General Contractor

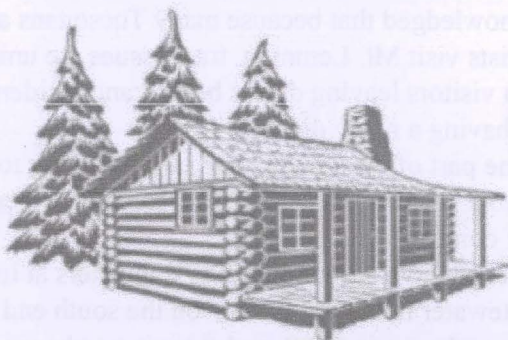
ROC 219566-221184-221185

520-576-1546 Voice

520-576-1116 Fax

****New email****

SelbyHarmon@aol.com



Massage in the Pines

Helping bring balance to body and mind.

Tami Arthur
Licensed Massage Therapist,
Certified Lymphatic Therapist

massageinthepines.net
520-449-3339

Stay Up to Date on Mountain Information

By Matthew Grossman

There are four online resources available to keep Mount Lemmon residents up to date between editions of *The Echoes*:

1. A Google Group has been set up to provide email updates. To join, send an e-mail to mtlemmon-hoa+subscribe@googlegroups.com.
2. The Mount Lemmon Homeowner's Association maintains a website at <https://mtlemmonhoa.org/>. Check it out, get informed, and contribute.
3. A neighborhood group has been set up on Nextdoor.com. Sign up using your cabin street address to be connected to the Mt. Lemmon group. If you already use Nextdoor for your valley neighborhood, you need to sign up for Mt. Lemmon under a different email address, because only one neighborhood is permitted per email address. This venue provides general information, worthwhile educational benefits and timely communication, especially during critical times, such as fire danger and road closures.
4. MLFDZ.org is the web address for our Fire Department. On the home page, under the Resources tab, is Firewise. This tab takes you to the compilation of the important Firewise information and forms. This includes an Action List for Property Owners, a Community Communications form, cheatgrass and bark beetle identification, and even more information to help keep your cabin and community safe.

Contribute to *The Echoes*

The Mt. Lemmon Echoes is published by the Mt. Lemmon Homeowners Association monthly, except December and January.

The November issue is the finale for 2022, and the next deadline for story, photo and announcement submissions, for the February 2023 issue, will be Jan. 15.

If you have a story or an idea for a story and need help writing it, send an email to chihak.echoes@gmail.com.

Email stories and announcements in Word documents to chihak.echoes@gmail.com.

Send photos and other artwork in jpeg files attached to emails.

Surviving and Thriving in the Mountain Winter

Protecting your cabin * Handling road conditions



(Photo courtesy of Pima County Department of Transportation)

How to be Safe on the Road

By Dan Leade

Even in the best of conditions, driving up and down winding mountain road can be perilous. So it is important to recognize that the addition of snow, ice and inexperienced drivers can increase the risk of driving in winter.

AAA has put together some suggestions helpful for everyone who may be driving in adverse weather, and we would like to pass along those recommendations to our community.

First, stay home if you do not need to be out in unfavorable conditions. If you must be out, always drive, accelerate and decelerate slowly.

Know your brakes, but do not stop to ensure that forward momentum is not lost. This is especially true when going uphill.

Also do not attempt to power uphill because your tires can begin to spin and lose traction. Make sure tires are properly inflated and in good condition. Make sure the 4x4 is in working order or that your chains or snow tires are ready to go.

Be prepared for emergencies. From AAA: "If visibility is severely limited due to a whiteout, you should pull off the road to a safe place and do

not drive until conditions improve. Avoid pulling off onto the shoulder unless it is an absolute emergency. Limited visibility means other vehicles can't see yours on the shoulder."

This is very important because we have lots of blind curves and heavy equipment to contend with. You should know where the pullouts are and prepare to use them if an emergency occurs.

Finally, understanding some preparation basics is paramount for survival if you get stuck in the snow for an extended period. AAA suggests drivers "keep a bundle of cold-weather gear in your car, such as extra food and water, warm clothing, a flashlight, a glass scraper, blankets, medications and more."

Consider a shovel to keep your exhaust pipe free from becoming packed with snow to avoid carbon monoxide poisoning, and be sure to start your trip with at least a half tank of fuel.

If you are interested in more advice regarding winter driving, refer to this link in the Internet: exchange.aaa.com/safety/driving-advice/winter-driving-tips.

Dan Leade is A-shift captain for the Mt. Lemmon Fire District. On behalf of MLFD, he wishes all a wonderful winter.

How to Shutter Your Cabin If You're Departing for the Season

Mt. Lemmon cabin owners who do not live full time on the mountain should:

* Shut off the water to your cabin at the meter every time

you leave the mountain.

* Drain all water lines and the water heater.

* Pour one-half to one cup of anti-freeze into all sink drains,

toilet bowls and toilet tanks.

These steps will help prevent broken water lines and subsequent flooding.

Cabin security, Page 6.

Empty Cabin Anxiety? Technology to the Rescue

By Matthew Grossman

As we prepare for winter, many of us wonder how we will find our cabins after the spring thaw. A number of devices are available to use your Internet connection to remotely monitor your cabin while it awaits your return.

Wi-fi-connected cameras can provide unparalleled peace of mind as well as glimpses of our local wildlife. Blink (blinkforhome.com) and Ring (www.ring.com), famous for their video doorbells, are two notable brands – both owned by Amazon.

PICK A POWER SOURCE

Various models are available for indoor and outdoor use with power options ranging from utility power to battery and solar. Some can replace your outdoor lights, eliminating the need for new wiring. Video clips are only uploaded to the cloud when motion is detected, so your Internet connection won't be unnecessarily saturated. This off-site storage protects the video should the cameras themselves be damaged or stolen. Motion alerts on your phone will inform you of visitors, regardless of species. Note that indoor cameras should be covered or disabled when the cabin is occupied.

Burglar alarms used to require extensive wiring, professional installation, a hard-wired phone line and a monthly monitoring fee. SimpliSafe (simplisafe.com) upended the market with homeowner-installed Internet-connected alarm system. Ring and other

manufacturers followed suit with competing products. These systems use battery-powered wireless sensors throughout your cabin which report to a central hub device.

SENSOR DETECTION

The hub uses your Internet connection to notify you if a sensor is tripped. Besides the usual door, window and motion sensors, smoke, carbon monoxide, freeze and flood sensors are available to alert you to other threats.

Professional monitoring is available as an option. The cost is often offset by a discount on homeowners insurance.

Smart thermostats allow you to pre-heat your cabin, should a winter-time visit be required. Google's Nest brand (nest.com) popularized smart thermostats. A number of traditional thermostat manufacturers such as Honeywell (honeywellhome.com/us/en/products/air/thermostats/wifi-thermostats) have upgraded their product lines to include WiFi connectivity. For those with baseboard heaters, Mysa (getmysa.com) makes a line voltage thermostat to control them.

PROPANE TANKS

Your propane tank level can be monitored remotely with a device from Tank Utility (tankutility.com/residential-propane-tank-monitor). Your tank must be equipped with a Remote Ready (R3D) gauge that has a slot to hold a sensor. If you don't have a compatible gauge, your propane supplier can install one. The Tank

Utility smartphone app shows the tank's current level, graphs usage over time and, most important, alerts you if your tank gets below a pre-set value.

You can help protect our community's water supply by installing a water monitoring device with an automatic shutoff valve, like the Flo by Moen (moen.com/flo). The Flo is installed by a plumber between the water meter and your cabin's plumbing. It can detect leaks and automatically close its valve to stop them. While it is not a replacement for shutting off your water at the street when leaving your cabin, it can be remotely shut off if you leave in a hurry and forget to turn off the meter box valve. Real-time monitoring via a smartphone app can tell you if a cabin guest fails to take your conservation message to heart.

POWER OUTAGES?

The cloud services that run most of the devices mentioned will alert you if they lose contact with the sensors in your cabin, which indicates an Internet and/or power outage. Trico (<https://www.trico.coop/>) will also alert you to outages if you sign up for an online account and install their SmartHub app. The free app can be used to report outages and view your bill as well.

With a properly-selected array of smart home devices, you can detect and correct cabin calamities as soon as they occur, avoiding spring-time surprises. You may even turn a four-legged neighbor into a social media celebrity.

Calling All Young Scientists: Faul Preservation Wants You



By Christina Grossman

The Mt. Lemmon Committee for the Faul Preservation Area and the University of Arizona's School of Natural Resources and the Environment are seeking K-12 children's research ideas for posting in the Faul Preservation display cases.

What better way to encourage our young scientists and explorers by honoring one of our own Mt. Lemmon kids?

Schools and home schoolers are working with kids to brainstorm their proposals and ideas for their science fairs and the Southern Arizona Research, Science and Engineering Foundation regional fair.

If you are interested in

researching animals, plants, trees, water, snowfall, astronomy, climate or technology focused on the Santa Catalina Mountains, have your parent or guardian contact me at christina@grossman.com to be placed on the review list to send to our committee and Dr. Willem van Leeuwen, interim director of the School of Natural Resources.

Even if you have chosen your science project, keep it in mind for the future, because this will be an ongoing project to connect community to the Faul Preservation Area every year.

As we move through this process, we will share more information along the way,

specifically any due dates. We want to continue to encourage all children on the mountain to be inquisitive and proactive about learning and engaging within their environment.

We are here to nurture you, our future caregivers and advocates of the mountain. There are at least seven biomes from the base to the summit of Mt. Lemmon, so there is plenty to research.

Remember, science is not always about facts or getting to the finish line first; it is also about the journey to learn about your environment and feed your curiosity. May your inquisitive minds lead you to success. We are excited to hear from you.

YOU HAVE THE POWER TO HELP OUR COMMUNITY

Sign up for Operation Round Up by December 31, 2022
for a chance to win a \$100 bill credit.

No amount is too small to give.



www.trico.coop/operation-round-up



(520) 744-2944 • www.trico.coop

[f /tricoelectric](https://www.facebook.com/tricoelectric) [@ /tricoelectricAZ](https://www.instagram.com/tricoelectricAZ)

Trico is an equal opportunity provider and employer.

A Touchstone Energy Cooperative



Steve Littler

RANCHO LINDA VISTA

Amy Buttery

ARIZONA'S OLDEST GUEST RANCH
ORACLE, ARIZONA

P.O. Box # 32683

Tucson, AZ 85751

Estab.



1984

"Your Dependable Truckers of Tucson"

www.deserttrucking.com

John "J.J." Johnson

Cell (520) 449-8800

Fax (520) 690-0011

Transfers

Super 16 & 18

Semi's & Bellys

10 & 12 Wheel Dumps

MLHOA President's Report

'Winter is a season of recovery and preparation.'

- Paul Theroux

By Sally Crum
MLHOA Board President

As many of our residents return to the valley for the winter season, your MLHOA Board is finishing out the year and planning for 2023.

We look forward to an exciting and healthy year, with opportunities to continue to meet face to face with our friends and neighbors, which is what we love.

By the time you read this, our first town hall meeting will be behind us (*Story, Page 1*). We hope to have begun making progress on two of our most important issues: trash and roads/snow removal.

Your board has been notified about significant increases in printing costs for *The Echoes*; we will be looking for the best way to deal with this. Please watch for updates. Remember, that November is our final issue of the year. *The Echoes* will resume publication in February.

If you hurry, you can still catch some beautiful fall leaf colors on the mountain.

Our best wishes to you and your families for a wonderful Thanksgiving, Christmas and New Year's.

Don't forget the Mt. Lemmon Homeowners Association White Elephant party, coming Dec. 11. *Details are on Page 9.*

The Echoes Hibernates

This is the final issue of *The Echoes* in 2022. We will see you again in February 2023.

EL RANCHO ENCANTO ASSISTED LIVING

EXTRAORDINARY HOMES, SUPERIOR CARE

Pam Haskell

Phone: 520-885-0004

Fax: 520-885-7077

Cell: 520-245-8292

5803 E. Ft. Lowell Rd.
Tucson, AZ 85712

pamhaskell@elranchoencanto.com
www.elranchoencanto.com



simply bits

INTERNET • VOICE • FAX

High Speed Internet
for your home

Avoid the
Seasonal Rush!
Schedule your Installation
Today!
Call (520) 545-0400
or visit www.simplybits.com

Progress on the Mountain: Road Paving, Creek Crossings

From the Desk of Supervisor Steve Christy

It's hard to believe that I am finishing up my sixth year as your supervisor, halfway through my second term. I am proud and grateful.

2022 is when much-missed traditional events and gatherings returned to our Mt. Lemmon community, especially the Fourth of July Parade.

And the village's roads finally received much needed attention. We hope you are enjoying them and the improved creek crossings.

The Mt. Lemmon community still faces several challenges, but we are making great progress with projects on the mountain and helping the village and business community achieve its potential, while maintaining its Sky Island charm.

None of this could have happened or have been made possible if it weren't for all of you – the devoted, dedicated and selfless folks of our mountain community. Your input, service and volunteerism make great things happen.

My District 4 team and I thank you for the opportunity to be of service to you.

Happy Holidays!

Contact Supervisor Christy at 520 724-8418 or district4@pima.gov.



CHAIRMAN, NATURAL RESOURCES,
ENERGY & WATER
VICE CHAIRMAN, FEDERAL RELATIONS
HEALTH & HUMAN SERVICES
MILITARY & VETERANS AFFAIRS

GAIL GRIFFIN
MEMBER, DISTRICT 14

ARIZONA
HOUSE OF REPRESENTATIVES
1700 W. WASHINGTON STREET, STE. H
PHOENIX, ARIZONA 85007-2844

CAPITOL: (602) 926-5895
TOLL FREE: 1(800) 352-8404
TUCSON: (520) 398-6000
ggriffin@azleg.gov

White Elephant Party Coming Next Month

It's time for the annual White Elephant party, hosted by last year's lucky winner, Sally Crum, assisted by Laura Mance and Diana Osborne.

The event is scheduled for Dec. 11 from 3:30 p.m. to 6:30 p.m. at the Tucson Hop Shop, 3230 N. Dodge Blvd. An all-you-can-eat artisan, gourmet pizza buffet will be provided by Ciao Down Pizza. Cost is \$15 a person.

Make your reservations by emailing Sally at sbc602@gmail.com with "White Elephant" in the subject line. When your reservation is confirmed, mail your check to Sally Crum, P.O. Box 662, Mt. Lemmon, AZ 85619. No payments will be accepted at the door; attendance is limited to 50.

Don't forget to bring your best White Elephant. See you there.

Sky Island Construction

BUILDING HOMES ON MT LEMMON AND TUCSON

NEW ROOM ADDITIONS • INTERIOR ROOM REMODELS
GARAGE ENCLOSURES, PAINTING / STAINING SERVICES
LOG CABINS & REDWOOD DECKS



GREGG FERGUSON

OFFICE: 471.6322

AZ Roc# 163522

SKYISLANDCABINS@AOL.COM



Mt. Lemmon Woman's Club Charity Drive, Winter Brunch

By Sandi Triplett

The Mt. Lemmon Woman's Club is collecting for More Than a Bed, which provides essential items to foster, kinship and adoptive families.

Needed are infant clothing; boys clothes sizes 7, 8, 10 and 12; twin sheets, blankets, towels and washcloths; and toys for a Christmas party.

The November meeting of the Woman's Club will be held in Tucson on Saturday Nov. 19 at 1 pm. The location will be sent to members. Grace Stockton, from More Than a Bed, will be our guest speaker.

We will hold our Winter Brunch at the Lodge at Ventana Canyon, in the Sabino Room, from 10 a.m. to 1 p.m. on Dec. 3. The cost is \$37 a person and must be paid by Nov. 21. Send checks to Mt. Lemmon Woman's Club, P.O. Box 673, Mt. Lemmon, AZ 85619, or pay at the Nov. 19 meeting.

The club's Jan. 17 and Feb. 15 coffees will be at the Coffee Exchange at East Tanque Verde Road and Camino Principal, starting at 10 a.m.

Mt. Lemmon Woman's Club Application Annual dues: \$40

Name: _____

Spouse's name: _____

Mailing Address: _____

Mountain address: _____

Home phone: _____

Mountain phone: _____

Email: _____

Birthday (month/day) _____

Mail this form and a \$40 check payable to MLWC to: Mt. Lemmon Woman's Club, P.O. Box 673, Mt. Lemmon, AZ 85619.

Want to be a member of the Mt. Lemmon Woman's Club? Complete the form above and send it in, or bring it to the November meeting.

We look forward to seeing all members at November's meeting and the Winter Brunch.

Colorado Log Enterprises LLC

Log Home Restoration & Maintenance



"Increase the Value of Your
Dream Investment."

Permachink and Sashco
Zero Failure Certified

Owner
Cole Pavy
303.249.9299

Office
303.887.5065

www.coloradologenterprises.com

Superheroes at Trunk Or Treat



These two superheroes were among the kids of all ages who came to the first Sky Island Kids Club Trunk Or Treat on Oct. 15 in the Summerhaven parking lot. Correspondent Agnieszka Sloan reported five vehicles offered treats, volunteers 'spooked-up' a haunted path, and celebrants shared Pam Harmon's vegetarian chili. (Photo by Michael Stanley)

Teen Challenge on Mt. Lemmon

By Vonnice Freeman

Tucson Teen Challenge, a faith-based recovery program for young men, brought more than 25 participants to Mt. Lemmon for an early fall weekend.

They enjoyed hiking, meals, fellowship and ski lift rides. Teen Challenge reports an 80% effective rate for those completing the 13-month program.



From left: Sandy Krauss, Lou Crum, Klayton Kirkwood, students Chris, Gregory, John, Michael Stanley, Leigh Anne Thrasher, student Cover. (Photo by Don Hickman)

5 Reasons to list with Mount Lemmon Realty

- We have specialized in selling Real Estate on Mt. Lemmon since 1940
- We are family owned. We have four licensed agents, two with their Brokers License
- We have the BEST knowledge of Mt. Lemmon
- We are experts on selling vacant lots, cabins, and Forest Service cabins
- We are involved in the Mt. Lemmon Businesses & Pima County

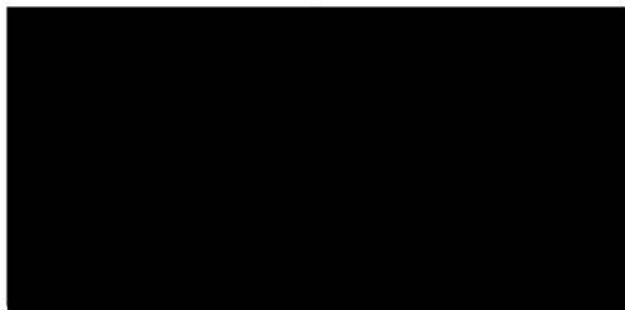


www.MountLemmonRealty.com

Call the office at 520-576-1333

Mt. Lemmon Homeowner's Assoc.
P.O. Box 699
Mt. Lemmon, AZ 85619

PRST STD
US POSTAGE
PAID
TUCSON, AZ
APS DIGITAL PRINT
85713



Critter Pictures: Beauties and the Beast



*This seemingly shy black bear was photographed by **Michael Singervalt** outside his Fern Ridge cabin.*

Submit Your Wildlife Photos

The Echoes wants your photos of Mt. Lemmon wildlife. Submit photos, along with names of species and where photos were taken, to chihak.echoes@gmail.com.



***Marty Herde** photographed these alert and curious yearling white-tailed deer at Ray and Retreat roads in late August.*