

I took both of these photos
on March 19th-
the first day of spring!



Greetings from a very quiet mountain! Although we don't want to make anyone's anxiety any worse, we do want to make sure everyone has the most current and accurate information available. This month's Echoes has information on two major threats to our collective safety-the COVID 19 epidemic and the continued threat of wildfire. These two issues are similar in that they both require appropriate actions of ourselves and those around us. Social distancing and Firewising our neighborhoods --each and everyone of us of taking care of our properties, our neighbors, and ourselves will get us through this challenging time safely.

At the moment, here are a few business updates: Ski Valley is closed for the duration; the Mt. Lemmon General Store is open for some items through their walk-up window; The Sawmill Run is open 11-4 for take-out through their walk-up window; The Cookie Cabin is open for take-out through their walk-up windows (order at one, pick up at the other); The Living Rainbow is open to a limited number of people at a time; the Post Office is open for business as usual, though we ask that everyone maintain the 6 foot spacing recommended (I have been disinfecting every surface possible!). Mt. Lemmon Realty is still open Fridays through Mondays. The Community Center is shut down for the duration as is Palisades Visitor Center and the other Forest Service public facilities--- the campgrounds and public restrooms (!). At Sabino Canyon, the Visitor Center is closed, tram rides are suspended and no restrooms are available there either. The main parking lot at Sabino is closed, but the overflow parking lot is available. There simply are not enough resources to maintain the normal services safely.

As we forge on through these odd times, let's remember how past generations were able to overcome adversities: with calm resolve, patient interactions and an overall vision of our country as one unit-with everyone doing their part to keep us all safe. Please be kind to everyone you meet, none of us really know how anyone else is handling this stressful period in our lives.



Thank you from your editor, Pamela Selby-Harmon

The MLHOA Annual Dinner set for 4-21-2020 has been canceled.

Due to the recent Coronavirus outbreak and corresponding drastic measures, the MLHOA is cancelling its annual dinner at the Viscount Suites Hotel. For those who have already sent in reservation checks that have been deposited, a refund will be mailed shortly. Other checks not processed will be returned as well.

Although this is a first, we all need to stay safe and follow the CDC's guidelines. To meet the legal requirements of the MLHOA by-laws, the Board will be holding a **virtual Annual Meeting** on Tuesday, April 21, at 6:00 PM. The membership is encouraged to attend from home using a computer, tablet or phone. Instructions to view the meeting online will be posted to Nextdoor and the listserv. If conditions permit, the Board will plan a social gathering later in the year.

Summer is fast approaching, and we hope to see you on the mountain soon. If you have questions, please call Michael Stanley 576-1538.



April 2020

- 8th - Full Moon
Passover begins at sundown
- 12th - Easter Sunday
- 15th - Tax Day—POSTPONED!
- 16th - Passover ends
- 18th - MLWC and MLWD
monthly meetings (hopefully)
- 21st - MLHOA-DINNER IS CANCELED!
Virtual Board Meeting - 6PM

The MLFD Board meetings will be held at the Fire station at 4:00 PM on the following dates:
April 6,* May 18, June 15.

*call ahead to confirm 576-1201

Sky Island Construction

BUILDING HOMES ON MT LEMMON AND TUCSON

NEW ROOM ADDITIONS • INTERIOR ROOM REMODELS
GARAGE ENCLOSURES, PAINTING / STAINING SERVICES
LOG CABINS & REDWOOD DECKS



GREGG FERGUSON
OFFICE: 471.6322
AZ ROC# 163522

SKYISLANDCABINS@AOL.COM

Frances E. Zimmerman
Sales Associate / Property Management

MOUNT LEMMON REALTY, INC

520.576.1333
520.349.4292 cell
520.576.9560 fax
franzim@mindspring.com



P.O. Box 1
Mt. Lemmon, Arizona 85619-0751
mountlemmonrealty.com

Cabin cleaning made easy

Next day, same day service available
Open/close cleaning jobs bid on site
Free estimates, flexible hours



Debbie Weatherly
520-203-3740

Email: Debbie.weatherly@gmail.com



Coronavirus Thoughts from Your MLFD

by Dan Leade, MLFD

By now, everyone reading this article has been made aware of the Coronavirus (COVID-19) pandemic currently affecting the world. It is the intention of MLFD to ensure that our residents understand what the virus is, what the associated symptoms are, how to protect yourself from becoming infected, and what to do if you do become ill.

COVID-19 is a virus that is thought to spread mainly from person-to-person. This usually occurs between people who are in close contact with one another (within about 6 feet). Respiratory droplets are produced when an infected person coughs or sneezes and these droplets can land in the mouths or noses of people who are nearby or possibly be inhaled into the lungs. Symptoms may appear 2-14 days after exposure and include fever, cough, and shortness of breath. More serious emergency warning signs that require immediate medical attention are difficulty breathing, persistent pain or pressure in the chest, confusion or inability to arouse, and bluish lips or face. This list of symptoms is most common, but symptoms may vary. If you are unsure of a symptom you are experiencing, contact your medical provider. Some people infected may even be asymptomatic.

In order to protect yourself and your family, the CDC recommends steps that will help prevent becoming infected. Clean your hands often. Wash your hands with soap and water for at least 20 seconds and avoid touching your eyes, nose and mouth. Hand sanitizer with at least 60% alcohol may be utilized when soap and water are not readily available. Disinfect frequently touched items like doorknobs, light switches, faucets, and toilets. Avoid close contact with others and cover all coughs and sneezes. If you are sick, stay home. The elderly and those with a serious underlying health condition are at a greater risk. These groups need to be especially vigilant.

MLFD encourages all of our citizens to become familiar with the wealth of information being provided by the CDC. If you do believe you have been infected, contact your medical provider. In the event that you need medical assistance from MLFD, be sure to describe all symptoms to the 911 dispatcher that you are experiencing. This not only helps MLFD staff further protect themselves from being infected, it also allows the receiving facility to be better prepared for your arrival. Keeping MLFD staff as safe as possible allows us to continually provide the care necessary to the community. This also keeps our staff from taking the virus home to our families.

This information was gathered directly from the CDC. It should be noted that as conditions change the CDC will update their site to reflect any pertinent information. You should check it often! <https://www.cdc.gov/coronavirus/2019-nCoV/index.html>

The Living Rainbow, Inc.

PO Box 753, 12789 Sabino Canyon Pkwy.
Mt. Lemmon, AZ 85619
(520) 576-1519
rainbowz@mindspring.com

Gifts • Windchimes • Aspen Fire Art

Proudly in business since 1979

"You can't sink a rainbow."



George R. Reitz

Realtor®
Multi Million Dollar Producer

Home/Office: (520) 722-1265

Cell Phone: (520) 444-1439

Fax: (520) 721-9301

greitz2@cox.net

Real Estate
Marketing Professionals
of Tucson



7481 E. Tanque Verde Rd., Tucson, AZ 85715

TAPS ON MOUNT LEMMON



MARY UNDOER OF KNOTS SHRINE

Inside the Shrine to Mary Undoer of Knots is a Veterans Memorial. Underneath its Ramada is a labyrinth with over 3,000 clay bricks enshrining the names of military veterans living and deceased. In honor of the veterans, Taps is sounded at the end of each day.

The American origins of "Taps," the distinctive bugle melody played to signal lights-out to soldiers at night as well as at U.S. military funerals and memorials, dates back to the American Civil War. In July 1862, U.S. General Daniel Butterfield and his brigade were camped at Harrison's Landing, Virginia, recuperating after the Seven Days Battles near Richmond. At this time Butterfield reworked an existing bugle call used to signal the end of the day. Taps quickly spread throughout the Army, and even caught on with the Confederates.

Not long after Butterfield created "Taps," it was played for the first time at a military funeral, for a Union cannoner killed in action. The man's commanding officer, Captain John Tidball, decided the bugle call would be safer than the traditional firing of three rifle volleys over the soldier's grave, a move which could not have been confused by the nearby enemy as an attack.

Oliver Willcox Norton recalled his experience as the first bugler to play Taps for a funeral later in his life: *"During the early part of the Civil War I was bugler at the Headquarters of Butterfield's Brigade and one day, General Daniel Butterfield sent for me, and showing me some notes on a staff written in pencil on the back of an envelope, asked me to sound them on my bugle. The music was beautiful on that still summer night, and was heard far beyond the limits of our Brigade."*

As for the name "Taps," the most likely explanation is that it comes from the fact that prior to Butterfield's bugle call, the lights-out call was followed by a Drum Tattoo, dubbed the "Drum Taps," as well as "The Taps" and then simply "Taps." When Butterfield's call replaced the drum beats, soldiers referred to it as "Taps." In 2012 Congress recognized "Taps" as the "National Song of Remembrance."

Of all the military bugle calls, none is so easily recognized or more apt to evoke emotion than Taps. As its sound echoes on Mount Lemmon, our history of honoring those who have and those who are ensuring our freedom resonates at 8,100'.

P.O. Box # 32683

Tucson, AZ 85751

1984

"Your Dependable Truckers of Tucson"

www.deserttrucking.com

John "J.J." Johnson
 Cell (520) 449-8800
 Fax (520) 690-0011

Transfers
 Super 16 & 18
 Semi's & Bellys
 10 & 12 Wheel Dumps

Millicyn E. Kossow
 Sales Associate

MOUNT LEMMON REALTY, INC

520.576.1333
 520.891.1976 cell
 520.576.9560 fax
milliekossow13@gmail.com

P.O. Box 1
 Mt. Lemmon, Arizona 85619-0751
mountlemmonrealty.com

The Shrine to Mary, Undoer of Knots

The Shrine will re-open for Liturgies after Easter, but it is open by appointment.
Please call 576-9653

Newspaper Delivery

Jenni Zimmerman will provide the Sunday newspaper for residents at a price of \$2.50, payable in advance. Please contact Jenni at Mt. Lemmon Realty to place your order 576-1333. Your papers will be available 11:30 on Sunday mornings at Mt. Lemmon Realty.

Relevant Phone Numbers:

Emergency —911

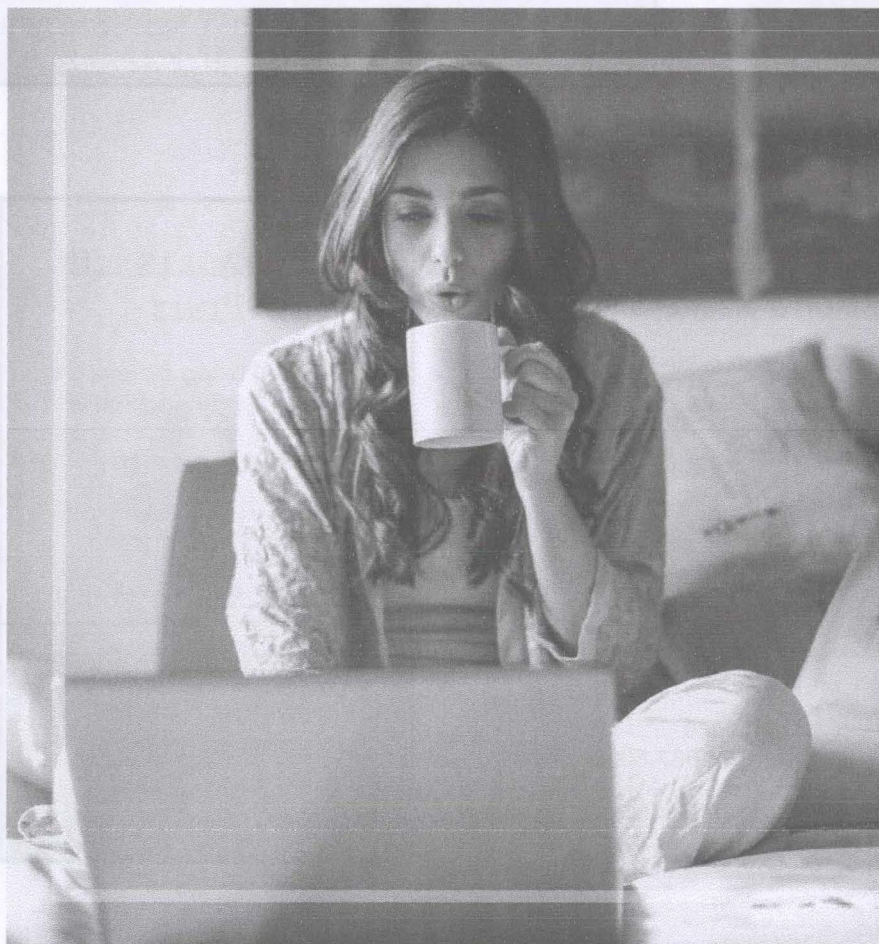
Ski Valley	576-1321
ML Realty	576-1333
MLPO	576-1427
Sawmill Run	576-9147
General Store	576-1468
Living Rainbow	575-1519
Cookie Cabin	576-1010
Shrine to Mary, Undoer of Knots	576-9653



High Speed Internet
for your home

Avoid the
Seasonal Rush!
Schedule Your Installation
Today!

Call (520) 574-7445
or visit www.simplybits.com



From the Desk of Pima County Supervisor Steve Christy

As we go to press in late March, I won't lecture you about what you have been hearing and dealing with non-stop for several weeks now: COVID-19 or the "Coronavirus."

Though some of us have lived through influenza pandemics and recession periods before, I think we can all agree it was nothing like what we are facing today.

Suffice it to say that all of you already know all the protocols. Please be sure to follow them and remember, "This too shall pass." And we are here to help.

Robert T. Zimmerman
Broker

MOUNT LEMMON REALTY, INC

520.576.1333
520.349.0013 cell
520.576.9560 fax
bob@mtlemmonrealty.com



P.O. Box 1
Mt. Lemmon, Arizona 85619-0751
mountlemmonrealty.com



Steve Littler

RANCHO LINDA VISTA

Amy Buttery

ARIZONA'S OLDEST GUEST RANCH
ORACLE, ARIZONA

Colorado Log Enterprises LLC

Log Home Restoration & Maintenance



"Increase the Value of Your
Dream Investment."

Permachink and Sashco
Zero Failure Certified

Owner
Cole Pavy
303.249.9299

Office
303.887.5065

www.coloradologenterprises.com

MASSAGE IN THE PINES

Helping bring balance to
your body and mind

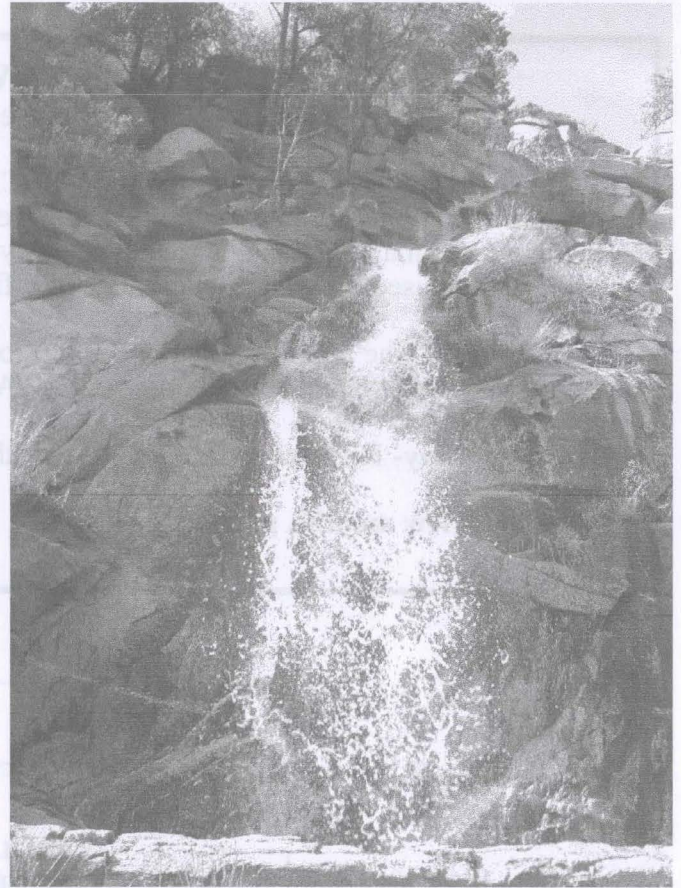
TAMI ARTHUR
LMT

520-449-3339

tamiarthur@gmail.com

- call to schedule
- Mt. Lemmon or Tucson
- Chair massage
- Events
- Businesses
- 1 - 2 hour sessions

*The gift from spring snow and rain:
SPECTACULAR waterfalls!*



M. C. Harmon Construction, LLC

General Contractor

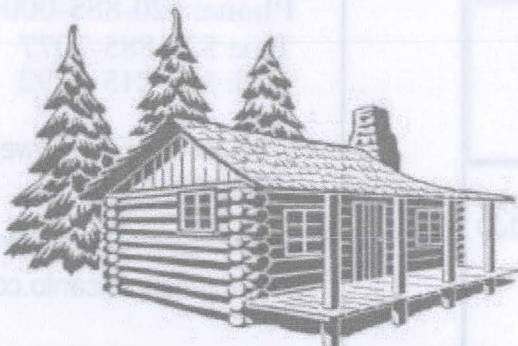
ROC 219566~221184~221185

520-576-1546 Voice

520-576-1116 Fax

****New email****

SelbyHarmon@aol.com



CHANGES TO TRICO ANNUAL MEETING AND VOTING

Trico Electric Cooperative has made changes to its Annual Meeting that was scheduled for April 4, 2020 at Casino del Sol.

Instead of an in-person meeting, Trico will conduct the Annual Meeting by telephone conference on **May 5, 2020 at 10 a.m.**

For more information and to vote for your Board of Directors, visit www.trico.coop. In order to be counted, your votes must be received by **April 28, 2020 at 5 p.m.**



(520) 744-2944 • www.trico.coop

f/tricoelectric t/tricoelectricAZ

Trico is an equal opportunity provider and employer.



Mt. Lemmon Woman's Club News

By Connie Taylor, president

On March 7, 2020 the Mt. Lemmon Woman's Club board members and I made a decision to cancel our monthly March 21, 2020 meeting. We all are concerned for the safety of our members. We do not have any major issues that cannot be delayed. Hopefully we will have our April meeting to see if we have a new slate of officers for the 2020-2022 term!

On March 14th- The Southern District Spring Convention, that was to be held at Tucson Woman's Club, was canceled due to having 50 or more people. Again, it was for the safety of everyone.

March thru May- Remember during these months it is Cheatgrass Removal Time! If you see it-Pull it!

In these next few months, please stay healthy!



CHAIRMAN, NATURAL RESOURCES,
ENERGY & WATER
VICE CHAIRMAN, FEDERAL RELATIONS
HEALTH & HUMAN SERVICES
MILITARY & VETERANS AFFAIRS

GAIL GRIFFIN
MEMBER, DISTRICT 14

ARIZONA
HOUSE OF REPRESENTATIVES
1700 W. WASHINGTON STREET, STE. H
PHOENIX, ARIZONA 85007-2844

CAPITOL: (602) 926-5895
TOLL FREE: 1(800) 352-8404
TUCSON: (520) 398-6000
ggriffin@azleg.gov



PROUDLY SERVING ARIZONA FOR 48 YEARS

Arizona Propane

GAS PRODUCTS SALES & SERVICE

- ✓ FAMILY OWNED
- ✓ COMPETITIVE PRICING
- ✓ NO HIDDEN FEES
- ✓ UNBEATABLE SERVICE
- ✓ RV COMPATIBLE
- ✓ RESIDENTIAL & COMMERCIAL

ENJOY A
MOUNTAIN
OF SAVINGS!

520-750-9116

Commercial Sales: Rene 520-621-0335

Trisha@arizonapropane.com

Renea@arizonapropane.com

EL RANCHO ENCANTO

ASSISTED LIVING

EXTRAORDINARY HOMES. SUPERIOR CARE

Pam Haskell

Phone: 520-885-0004

Fax: 520-885-7077

Cell: 520-245-8292

5705 & 5803 E Ft. Lowell
Tucson, AZ 85712

pamhaskell@elranchoencanto.com

www.elranchoencanto.com

Jenni Zimmerman
Sales Associate / Property Management

MOUNT LEMMON REALTY, INC

520.576.1333
520.861.0161 cell
520.576.9560 fax
jenni@mtlemmonrealty.com

P.O. Box 1
Mt. Lemmon, Arizona 85619-0751
mountlemmonrealty.com






MLCC Audio/Visual Equipment Installation Is Completed

The Mt. Lemmon community and visitors from around the world enjoy the many opportunities offered by the Mt. Lemmon Community Center which has seen many improvements since the doors were first opened in June 2007. Tables and chairs were purchased, the Visitor Center opened with interesting displays, and volunteers offer information about hiking, restaurants, lodging and history. The meeting room has provided a place for local organizations to gather for Firewise Block Parties, concerts, ice cream socials, chili cook-offs, art displays, sewing, Pilates and yoga, informational and inspirational lectures and church services.

Over the years, the community, under the guidance of the Pima County Natural Resources, Parks and Recreation, has made much-needed improvements such as the recent acoustical tiles and purchase of new tables and chairs, thanks to donations and funding by the County. Finally, to compliment the acoustical tiles, one of the most lacking has been addressed, that of poor quality of audio/visual effects. This addition to the center will enable all who use the facility to see and hear what is being presented.

The dream began with our own Jeff Haskell, as he evaluated what was needed to improve the acoustics and audio system. Funding was raised from four annual concerts, donations, and funds provided by the Mt. Lemmon HOA Board to augment funds from Pima County Parks & Rec. Diana Osborne also worked tirelessly as liaison between the MLHOA Board, the MLCC and Joe Barr and Kelly Cheeseman of Parks & Rec to make things happen. Thanks to these people and Dennis Cozzetti and Matt Grossman for the installation of the amazing equipment.

Next time you visit the meeting room, you will enjoy:

- State-of-the-Art projector attached to ceiling by 6' long down-rod (Parks & Recs)
- Projection screen attached to north wall with integral 3-speaker system (Simply Bits)
- Amplifier located in cabinet above microwave oven and extensive wiring (Matt Grossman)
- Laptop and other electronic equipment (Parks & Rec)

Regardless of the uncertainty in our world swirling around the coronavirus pandemic as of this writing, the MLCC will be ready for the upcoming spring and summer season and the many functions and activities being planned. As Diana Osborne emphasized, "It really was a team effort!" Be sure to notice, give thanks and be grateful for all the wonderful improvements and changes accomplished for YOU!

About the MLHOA

Mt. Lemmon Homeowners Association (MLHOA) was formed in 1969 to protect the welfare of the Mt. Lemmon community and to be involved in all aspects of its improvement. The concerns of the organization are not limited to private property owners. Full membership with voting rights is accorded to private owners and leased land holders upon payment of yearly dues. Being organized, having a legal fund and having active local voice participation enables the Association to accomplish most of its goals. The Association organizes social events such as potlucks, pancake breakfasts, ice cream socials and raffles, enabling owners to mingle. The Annual Dinner and Meeting is held each year on the first Tuesday after taxes. Unfortunately, this event is canceled this year due to the current health crisis.

Pima County has said the MLHOA is the strongest and most respected homeowner's organization in the entire county.

Members of the board of directors are: Michael Stanley, president; Jenni Zimmerman, vice-president; Linda Currin, treasurer; Sally Crum, secretary; Pamela Selby-Harmon Echoes editor; and members-at-large John Mulay, Pete Krauss, Debbie Fagan, Mike Bernstein, Tom Thomas and Matt Grossman.

The Mt. Lemmon Echoes is the primary communication arm of the MLHOA. It is published monthly, from February to November. Advertising in the Echoes for one year (10 issues) is \$100 for a proportional business card, \$250 for a quarter page and \$500 for a half page.

Mount Lemmon Homeowner's Association
Annual Membership \$35 (payable to MLHOA)
 Mail this form and your check to MLHOA, PO Box 699,
 Mount Lemmon, AZ 85619

Name _____

Mailing address _____

City/State/Zip _____

Mt. Lemmon street address _____

Home Phone _____

Mt. Lemmon Phone _____

Email address _____

Check one:

☐ Property owner ☐ Renter ☐ Friend of the mountain

The Mount Lemmon HOA gratefully thanks all who paid \$35.00 dues already. These dues help cover the cost of the monthly Echoes and provide valuable information posted on the Mount Lemmon website and listserv. Dues were payable on February 1, 2020, so please clip the handy coupon and complete the important information for our database. Note your mailing address on this Echoes shows your "paid through" reminder date. If you're not receiving the monthly Echoes (February-November), it's probably because you haven't paid, or we don't have your current mailing address! Contact Linda Currin, treasurer, at lcurren@q.com or 247-2582 if you have concerns or questions. See you on the mountain.

The Mt. Lemmon Community Center is part of Pima County's Natural Resources Parks and Recreation (NRPR) department. The center is located in the heart of Summerhaven. The facility is dependent upon local volunteers to staff and support the visitors center. The mission is to welcome all who visit the facility and to promote Summerhaven, Mt. Lemmon and Pima County, Arizona. To reserve the MLCC, call Kelly Cheeseman, Pima County Parks and Recreation, 520-724-5208, or email Kelly.Cheeseman@pima.gov.



Firewise 2020 Launches in April

Coronavirus might be consuming most of our attention right now, and rightly so, but with wildfire season just around the corner, Mt. Lemmon property owners and residents must also tend to the important work of protecting cabins and properties from the spread of wildfire. **Mt. Lemmon's 2020 April Game Plan** on the next page provides you a month-long roadmap of what to do and when.

Even if you firewised last year to remove fuels from your properties, autumn and winter have created additional fuels (dead pine needles, pine cones, branches, etc.) that need to be removed from both developed and undeveloped lots and properly disposed of. However, as we continue to learn from our experience and that of other communities, we ask all Mt. Lemmon property owners to expand this year's focus to address these dangerous fire hazards:

Protect your cabin from embers. Experience with recent wildfires in California and Australia confirms that embers are the #1 reason that structures ignite, which then generates new embers that endanger neighboring structures. *(See the checklist below for how to ember-proof your cabin.)*

Carefully remove cheatgrass. Spring brings a new crop of **cheatgrass**, a ferociously fast burner and rapid fire-spreader. Follow special practices for pulling and bagging the grass, or reserve a Boy Scout trained to do the job. *(See the article on cheatgrass later in this issue.)*

Reduce the risk of bark beetles. Bark beetles are attracted to exposed wood on tree trunks, giving them an entry for infesting the tree. This weakens the tree, making it fire-prone and creating a pathway to infestation of nearby trees. Do prune lower tree limbs to prevent fire from moving up into the tree canopy, but then use a liquid pruning sealer to properly coat the limb stubs. *(Neighborhood Captains have more information about bark beetles.)*

Your Neighborhood Firewise Captains stand ready to answer questions and do a risk assessment to determine what actions will afford your cabin and property the greatest protection. You can take the recommended actions yourself, or hire a Firewise service provider. *(See the list, Firewise Resources, on page 13.)*

KEEP OUT EMBERS—KEEP OUT CHEATGRASS—

KEEP OUT BARK BEETLES

✓ Ember-Protection Checklist for Cabins ✓

Your goals are to (1) remove flammable materials within 5' of the cabin that embers could ignite and (2) close off spaces and openings so that embers and debris cannot enter. Start at the roof and move down to the foundation.

- | | |
|---|---|
| <input type="checkbox"/> Install a spark arrestor on chimneys.
<input type="checkbox"/> Clean roofs and gutters of dead leaves, debris and pine needles.
<input type="checkbox"/> Replace or repair any loose or missing shingles or roof tiles.
<input type="checkbox"/> Install 1/8-inch metal mesh screening on vents in the eaves.
<input type="checkbox"/> Clean debris from exterior attic vents and install 1/8-inch metal mesh screening. | <input type="checkbox"/> Repair or replace damaged or loose window screens and any broken windows.
<input type="checkbox"/> Screen or box-in areas below decks and patios with 1/4-inch wire mesh.
<input type="checkbox"/> Move any flammable material at least 5' away from wall exteriors—mulch, flammable plants, leaves and needles, firewood piles.
<input type="checkbox"/> Remove anything stored underneath decks or porches. |
|---|---|

Mt. Lemmon 2020 Firewise Game Plan

Between NOW and May 4

Step 1

Contact your Firewise Captain to schedule free risk assessment.



Firewise Captain
(See Resource List)

Step 2

Firewise Captain assesses wildfire risks to your cabin & property & recommends actions.



Firewise Captain

Step 3

You firewise your cabin/property OR hire a Firewise service provider. Properly dispose of the waste (see options below).



OR

Service Provider
(See Resource List)

May 2-4 Wildfire Preparedness Days

Saturday & Sunday, May 2 & 3

Property cleanup and cabin ember-protection continue.
Stack slash along streets on chipper route for free chipping.
Let your Firewise Captain know if you have slash to be chipped.

Monday, May 4

May 4 ONLY: Chipper will travel these streets to chip slash piles for free. **NO ROUNDS** accepted.

Other Disposal Methods for Firewise Waste

MLFD Burn Pile

- Open until fire restrictions declared.
- For Mt. Lemmon property owners and local service providers only. Commercial Firewise providers must take waste to Tucson.
- **Call MLFD first** (520 576-1201 ext. 5) to ensure a firefighter is there to unlock gate to burn pile. **Do not leave materials at the firehall or access road.**
- **Acceptable waste:**
 - ✓ **Slash:** Branches under 10" diameter fallen or trimmed from upright or downed trees.
 - ✓ **Pine Needles:** Rake only top layer (don't disturb underlying layer or dirt). Put into heavy paper garden bags (buy at General Store or your local hardware store) and close with tape. Keep sticks, stones and dirt out of bags.
- **Prohibited materials (do not bring to MLFD):**
 - ⊗ **No rounds (tree trunks sawed into sections):**
Stack rounds in front of your property for people to take for firewood. Alert MLFD that this firewood is publicly available.
 - ⊗ **No trash, building material, carpet, furniture, metal, plastic**
 - ⊗ **No cheatgrass:** Put pulled grass in black plastic bag, tie tightly and transport off the mountain for regular trash collection in Tucson. (See article on cheatgrass in this issue.)

In Summerhaven

- Ajo, s. of Loma Linda Ext.
- Carter Canyon
- Loma Linda Ext.
- Middle Sabino
- Phoenix
- Sabino Canyon Pkwy
- Tucson, n. of Upper Goat Hill
- Tucson, n. & s. of Retreat
- Turkey Run
- Upper Loma Linda

On Forest Service Land

- Sunset Trail Head parking lot
- Intersection of Fern Ridge & Sykes Knob Rds.
- Upper Soldier's Camp (up the paved hill to the dirt area)
- Base of Upper Bear Wallow Rd.
- The "Y" in Willow Canyon

Firewise Resources

Firewise Captains

Neighborhood	Firewise Captains	Phone	Email
<i>Individuals denoted by * will also provide back-up for assessments elsewhere in Summerhaven. Those denoted by ² will also provide back-up for assessments on lots on Forest Service land.</i>			
Loma Sabino HOA, including Middle Sabino and Upper Loma Linda	Louise Lynch* John Lynch* Diana Osborne* Craig Orozco*		
N. Tucson (north end), Bisbee, Gila	Marty Herde		
N. Tucson (south end), Ray, Retreat	Bernadette Blatt		
Phoenix, Globe, Hayden, Upper Goat Hill, Winkelman	Matt Grossman*		
Casa Grande, S. Ajo	Tami Arthur		
Loma Linda Extension, N. Ray, Z, Yuma	Marie Ahmann (captain) Tami Arthur (assessments only)		
Tempe, Florence, N. Ajo	Carole & Joe McCollough		
Carter Canyon, Miami, Miner's Ridge, Flicker	Mickey Gelsinger Paul Gelsinger		
Turkey Run, Wren, Grossbeak, Guthrie, Tanager, Cap Rock	Jenni Zimmernan		
Willow Canyon	Sandi Triplett ² Les Corey ² Bonnie Corey ²		
Soldier's Camp	Chuck & Linda Huber Sue Clark (assessments only)		
Sabino Canyon Parkway	Dorothy Johnson (captain) Louise & John Lynch (assessments only)		
Red Ridge & any others unable to schedule an assessment by their Neighborhood Firewise Captain	MLFD or any Firewise Captain denoted by * or ²		

Firewise Service Providers — Hire to clear branches & needles, move wood piles and ember-proof cabin with caulking, screening and sealing patches of exposed wood. (Services vary by provider).

Mt. Lemmon Providers		Commercial Providers	
Debbie Weatherly		Affordable Chimney and Duct [aka Affordable Chimney Sweep]	(520) 444-2845
Sean & Barb Magee		This list will be modified/expanded based on feedback from those who hire a commercial provider. Please post your experience on Nextdoor and/or contact your neighborhood Firewise Captain.	
Leanne Mack		Other Providers	
Aaron Lindflott		Scouts	Available by reservation only on May 2-3 to rake/bag pine needles in exchange for \$ donation. You provide large paper bags (a deal at Mt. Lemmon General Store). For a reservation, contact Chuck Huber at (520) 444-2845. (To reserve scouts for cheatgrass removal, see following page.)

Distinguishing Characteristics of Cheatgrass and Control Measures

Lindy Brigham

As we mentioned in the March Echoes, cheatgrass (*Bromus tectorum*) season is here and we need to be ready. The FireWise committee has developed a checklist of things property owners need to do to prepare for fire season (see article on page 11). Cheatgrass removal is a critical part of that effort to ensure this fire prone grass does not contribute to property damage/loss or worse. Cheatgrass is also a problem for pets. More on that next month.

Identification: Cheatgrass is an annual grass that grows from seed produced from the last year's crop. It is considered an 'ephemeral' (transitory or quickly fading) in that once it goes to seed and then dies, it completely disappears and you would never know it had been there. This means that you'll not see a long skirt of its dead grass around new growth, and roots will be shallow (easy to pull). The seeds germinate in the winter under the snow.

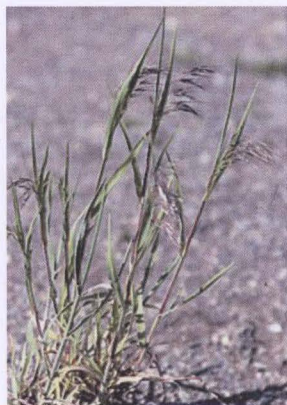
The green leaves of the young cheatgrass plant look like many of the other grasses and it is not until the seed head forms that the plant can be identified. The seedhead emerges roughly horizontally rather than vertically. (see photos 1 & 2) As it matures, the plant has a characteristic drooping clustered seedheads. (See pictures 5 & 6).

Cheatgrass usually grows 6 to 12 inches high depending on the amount of sun and moisture it has. In hot dry conditions the plant can seed when it is 3 inches tall with only one stem and one leaf. In shady moist areas, the plants are tall and dense with many stems, leaves and seed heads. Cheat grass usually starts appearing end of March, beginning of April. It is usually gone by the end of August.

Control: Cheatgrass can be pulled fairly easily at any point in its life cycle. However, it is best to pull when it is green and the seeds have not matured (1, 2, 5, 6). When it is fully green, you can pull it and leave it on the ground to return to the soil. If you wait until the plant starts to turn purple (7 and 8), you must bag it to prevent the seeds from falling off and growing again next year. The bags cannot be put on the community slash pile, they must be taken to town trash for the landfill. When it is green, it can also be sprayed with herbicide glyphosate (brand names, Roundup, Accord, Rodeo, Touchdown). Once it has started to turn purple, time to seed release is short, so act promptly. Chemical treatment will not work and you can only pull. Once the plant is completely purple and looks dry, the seeds have already been dispersed and it is too late to pull it. Make sure you note the area and return next year to pull the plants that will have grown from those seeds.

Want a Boy Scout to pull and bag your cheatgrass? We have grant monies available to pay the scouts for this service. BY RESERVATION ONLY. Tentative Dates: April 18 and April 25. Contact Sally Crum at sbc602@gmail.com or (520) 419-8204

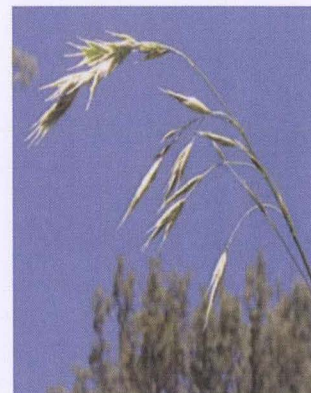
Photos for identification: Cheatgrass and lookalikes



1. & 2. New emerging cheatgrass: seedheads — roughly horizontally and clustered



3. **Not** cheatgrass: seed-head—emerging vertically



4. **Not** cheatgrass: seed-heads —not clustered



5. Green cheatgrass seedheads



6. Cheatgrass bunch



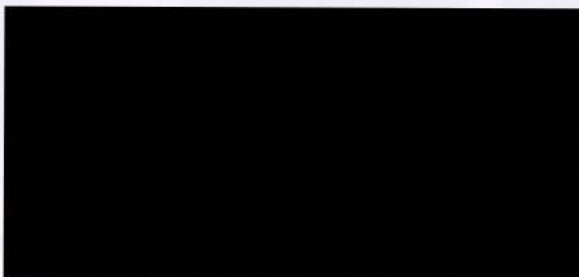
7. Purple seedheads



8. Dried cheatgrass bunch

Mt. Lemmon Homeowner's Assoc.
P.O. Box 699
Mt. Lemmon, AZ 85619

PRST STD
US POSTAGE
PAID
TUCSON AZ
APS DIGITAL PRINT
85713



The Mount Lemmon Fire District
is pleased to welcome Tony Mazza
and Teri Carpenter to the Fire Board.

Thank you for stepping up and serving your community!