

The Mount Lemmon Echoes

Summerhaven Gets A Church

by Lorri Hans

As we all know, there is a church being built on Tucson Avenue, right behind the General Store. As with any new project on the mountain, the rumors of what it will be, how it will be managed, and what if anything it offers our community have run rampant. I reached out to Father Rankin, who has been an advisor since the idea of building the church started. There are still many decisions to be made but I do think I got enough information from Father Bob to address many concerns.

The first and upmost concern I had as an immediate neighbor was the sounding of the bell. I was told the bell would ring every 15 minutes throughout the day. This question brought much laughter from the Father. He said he had not heard of anything like that. Not only will the bell not ring every quarter hour, it will not be attached to any electrical timer at this point. It may ring on significant days such as Easter or Christmas, but at this point there is no set schedule for the ringing of the Paul Revere minted bell. The bell was, at one point in the bell tower of a church in Massachusetts. Acquiring the bell came after the idea of making the church a memorial/shrine for Veterans. When they heard of the bell being available, it set in motion the building of the bell tower and the bell tower patio where people could come and take sanctuary in. At such a time when the bell does ring, the father assured me that the church would not allow the noise to become a factor for the community. The level of the bell sound will

be set by the community's acceptance of volume.

The church will be Catholic Byzantine as its denomination but no set schedule for services have been made at this time. As Priests are available, then services will be scheduled.



At this point the church is considered more of a "shrine". Before the bell tower and patio became a part of the picture, it was decided that the sanctuary would be dedicated to any and all Veterans and MIA's. People can choose a brick and dedicate that brick to a loved one that is a Veteran or MIA enlistee.

I mentioned another rumor I had heard that the church itself would be open 24 hours a day, 7 days a week as a meditation area. I was told recently by other locals that people could enter the church anytime of day to take sanctuary or to simply meditate. I was corrected by the Father that the building itself and the parking structure would not be open to the public at all times.

The building and the parking structure will be open to the public when services are being held and possibly more accessibility during the holidays. People will be able to access the memorial wall and the bell tower patio area for meditation or prayer at all times.

So, when we hear rumors about what is happening behind the General Store, we now have informative, correct information to respond with! I will do a follow up article once the building is done and there is a schedule for services for locals to attend.

Mount Lemmon Homeowners Association and Jeff Haskell Present

The second annual MLHOA summer concert on Saturday, June 24th, at the Mount Lemmon Community Center. 7:30 PM. Tickets go on sale Saturday, June 3rd, and your check is your reservation. Price per person is \$35.00, and checks should be sent to the MLHOA, PO Box 699, Mount Lemmon, Az. 85619. Checks should be mailed after June 3rd and will be recorded in the order they are received. Checks only please, no cash. Seating is limited, so plan accordingly. Since there are no reserved seats, doors will open at 7:00 PM, so you might plan on arriving a little early! Perhaps plan a special dinner at the Sawmill Run or at the Iron Door? Look forward to an exciting and enchanting evening with the Women of the Blues!

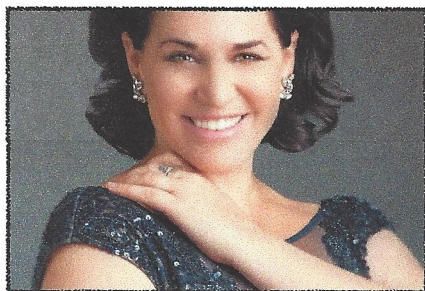
WOMEN OF THE BLUES

6/24/2017
7:30 PM

This is a show not to be missed.

Join Katherine Byrnes, Julie Anne, Crystal Stark and Jeff Haskell as they pay tribute to the great Women of the Blues. Known as Triple Threat, these powerhouse vocalists will take you on a musical and historical journey celebrating

the great ladies of the blues. The stories of the female classic blues singers of the 1920's are told through the music of Ethel Waters, Ma Rainey, Bessie Smith, Eva Taylor, Ella Fitzgerald and Billie Holiday.



Katherine Byrnes, an award winning vocalist has toured the world from China to Europe singing Jazz, Broadway, Rock and Classical genres.



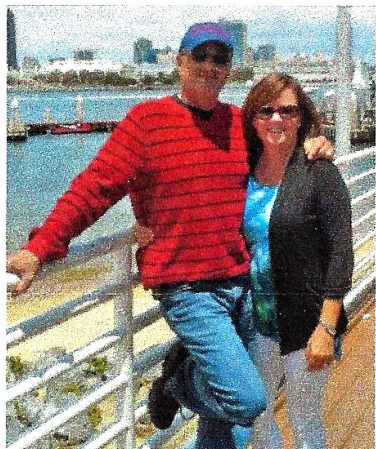
Crystal Stark, an American Idol finalist brings a positively captivating energy to her music. Crystal is seen all around Arizona headlining concerts.



Julie Anne is one of a kind with a personal style that sets her aside from others by the quality of her voice, and unique phrasing and interpretations.

Bon Voyage!

by Randy Ogden, fire chief (retired)



Wow...let me repeat...WOW!!! What can I possibly say? You have truly taken my words away. It has been an honor to be your fire chief. I am humbled by your generous send off. Thank you! It is because of the generosity of the residents of Mount Lemmon that Kathy and I are heading to the Columbia River on a wine cruise next year. You have always made us feel welcome.

I have learned so much from my assignment with the Mount Lemmon Fire District.

After 33 years working with the 2nd largest Arizona fire department, I was pretty sure I knew everything that I needed to know to run a small "boutique" fire district. **I didn't!** But, I had some amazing support from the Mount Lemmon Fire Department firefighters and the awesome volun-

teers.

I still remember my very first weekend in my new command. We had a fire in Marshall Gulch. The dispatch center called and requested that the MLFD provide water support for the air attack. I was asked to set up the "pumpkins". "No problem", I said, "we can do that". I hung up the phone, turned to Dan Leade and asked, "What is a pumpkin?" Captain Leade gave me one of those "*Oh no, what are we in for with this guy*" kind of looks. That day I learned to listen to my people. They never steered me wrong.

Mount Lemmon has some of the most dedicated, professional and compassionate firefighters in the state. I would readily serve along side any of the Mount Lemmon firefighters or volunteers and trust that they (and the community) "would have my back".

Weekends and holidays on the mountain were always filled with emergency responses, abandoned campfires and rescue challenges. Watching Sheriff Lee Hays work his "speed zone" and tromping closely on Deputy Dave's heels on trail rescues...these will be some of my fondest memories. Getting my wildland Red Card each season and recertifying as an EMT...not so much!

I will miss working for you. If I can ever help, just call. Kathy will let me come back...I think.

We Say Good Bye to a Friend and Neighbor, Norman Ross

by Lorri Hans

It is never easy to write about one of our locals, our friends, our neighbors passing away. Norman (Norm) Ross, passed away Saturday, May 20th at 7:22 am due to complications from his cancer. He was survived by his loving wife, Anne and their companion dog, Sasha. I met briefly with Anne today and we talked about his memorial service that will be held at the VFW where they will serve bagels, lox and cream cheese (Norm's favorite). More information about his services will be forthcoming. Our hearts and prayers go out to Anne Ross and their little dog Sasha as they reroute their lives without their loved one, Norm. Rest in peace Norm...your smile and hugs will be missed on the mountain.

Shovel Fire: Early Warning for the Upcoming Fire Season

by John McLean

It sounds strange to say it, but we got off easy with the early-season Shovel Fire near the junction of the Lemmon and Sutherland trails (about one mile west of the peak). Cooler temperatures and rapid response limited the fire (started April 8th) to about 17 acres. As with the Molino fire (April 4th-50 acres) and Sawmill Fire (April 23rd-47,000 acres), the fire was human caused.

While a small area was completely charred, many of the mature trees (and even some young ones) survived the blaze. Interestingly, signs of new growth are already appearing less than a month after the fire.



As we progress into the summer, higher temperatures, dryer fuels, more visitation, and monsoon lightening will exacerbate the fire danger. While we can't control all these factors, we can be proactive in mitigating the risk by clearing flammables around our homes and community. Let's not forget the lessons of the Aspen Fire (June 2003-85,000 acres-340 homes)

Cheatgrass 2017

by Lindy Brigham

As most of you are aware by now, cheatgrass is up and ready for treatment. Several people have borrowed sprayers to work on their and others properties. THANK YOU!!! Note that the sprayers are available from me (Lindy-955-259, labrigham@msn.com) or from the Fire Department which is storing the 10 sprayers we bought with the grant monies. Dennis is again operating the 50 gallon sprayer to do roadways and large areas. He needs HELP! Please contact him at denniscozzetti1@me.com.

I have been in communication with the Forest Service and they came up on May 11th to review the cheatgrass situation. They have a couple of interns this year who are going to be helping with the cheatgrass on FS lands.

Please continue to report cheatgrass when you see it and if you are not able to take care of it yourself. The form is on <http://mtlemmonhoa.org/cheatgrass.html>

And as a reminder-Make sure you are on the listserv to get updates and information on cheatgrass, plus all the other important mountain information. (The sign-up form is on the home page at <http://mtlemmonhoa.org>)

If you have any questions, please contact Lindy at labrigham@msn.com or 520-955-2599

Mount Lemmon Woman's Club News

by Mary Hunter, president

The 40 laundry bags and 40 freezer bags filled with assorted art supplies (as reported in last months Echoes) are complete and delivered to the Candlelighters Childhood Cancer Foundation of Southern Arizona. These bags will be given to the children with cancer attending Camp Laughton the first weekend in June. We hope for a fun filled weekend for these very deserving kids.

Special thanks to the Woman's Club ladies who helped with the sewing and filling of bags. Also thank you to club members for their generous donations of art supplies.

The next meeting of the Woman's Club will be held June 17, 2017 at 1:00pm at the Mount Lemmon Fire House (note the change of location)

June Speaker

Bill Gillespie

Retired Coronado National Forest Archeologist

DATE: Saturday, June 17, 2017

TIME: 2:30pm (following the MLWC meeting)

PLACE: MOUNT LEMMON FIRE HOUSE

TOPIC: "Road to the Mountain"

(Including the building of the Mount Lemmon Highway)

ALL ARE WELCOME TO ATTEND!

Ladies of Mount Lemmon

**You are invited to the annual Mount Lemmon Woman's Club
Membership Luncheon**

DATE: Saturday, June 3, 2017

TIME: 11:00am

PLACE: D-1 Cabin (last cabin on Turkey Run on the left)

Enjoy a delicious salad lunch and get to know the Mount Lemmon Woman's Club.

ALL ARE WELCOME TO ATTEND!

**Picture of Mike Bernstein and Doug Mance listed below
Explaining the application "Nextdoor" for the community**



Diversity Exists in Nature to Teach Us a Lesson: Counting, Pattern Finding, and More!

by Christina Grossman



I could not resist in getting our home a bunch of beautiful Tulips. If you have read the other posts about looking at flowers in Nature to look for patterns, well this one is not any different. Tulips taught me a lesson about diversity.

Fascinated about the black and yellow six-pointed star, I counted the points on the Stigma of the flower. Three points on the Stigma, then six Stigma, then six red petals on the Tulip.

In Nature, there are flowers demonstrating these patterns of either doubling the original number from the Stigma, or simply repeating the original number from the Stigma. However, this second Tulip (pictured on the right) surprised me because this Tulip demonstrated the same doubling pattern, but a different original number. Looking at this particular Tulip, the Stigma has four points, not three points. Then that quantity of four is doubled to eight Stigma and eight petals. Wow! I love Nature!!! Yes, I realize that these Tulips were not cultivated in the wild, but this one grew to be much different then the other red Tulips. So this hit me with a great example of showing kids and ourselves as to how Nature and Mathematics shows us that Diversity still exists even when we think we are all the same. These two Tulips have the same color pattern, have the same green stem, and are both called Tulips. However, both are still different and unique from one another, which is beautiful!

So, how is this important with Mathematics? Well, just by understanding how to count, how to compare and contrast, and how to find patterns, that can simply take you to a lesson of learning and appreciating Diversity. Yes, Nature has an abundance of beautiful flowers of different shapes, sizes, and colors! Each of them have their own purpose of making the world function and be beautiful! How exciting it is to further see that even when we think a bunch of flowers look the same, Diversity still exists!

This is why Mathematics is so very important and near and dear to my heart. Mathematics is not just solely about numbers, but extends to our very own life and life lessons that we might encounter from day to day. What a wonderful way to introduce this particular lesson to your child about how Nature can beautifully teach us about the importance of Diversity and celebrating Diversity.

Something to think about:

The world of Mathematics is in your home and outside, so go explore what new lessons are out there! Always remember that it does not matter who crosses the finish line first, it is actually getting there that is important!



Will It Survive Embers?

June 2017 FireWise News

by Glen Schager and Susie Pearce your Firewise co-chairs

We are now in the most dangerous part of fire season. Little rain for the last 2 months, plus relatively high temperatures, plus steady wind, all of which combine to really dry season this far. A study of the 2007 fire in Rancho Bernardo, California that destroyed 74 homes showed that embers from the approaching wildland fire front started arriving at the community an hour before the main fire front, traveling a distance of 5.5 miles. These embers were the direct cause of the burning of 1 out of every 3 destroyed homes, and the indirect cause of the destruction of another 1 of 3 destroyed homes. Indirect means they ignited something other than the house and that something caused the house to burn. So, 2 of 3 homes burned because of embers catching things on fire.

The winds we have up here blow pine needles and other small flammable material into piles on our roof valleys, chimneys, along side of our cabins and other structures and elsewhere (next to shrubs, fences, wood piles, etc.) Where these piles form is the same place embers from a wildfire will accumulate and ignite these little piles. So, as the study done following the San Bernardo fire shows, we need to get rid of these little flammable piles of needles, etc. Also, highly flammable cheatgrass is back. This needs to be gotten rid of on your property ASAP by pulling or spraying.

Thanks for your support of the Firewise event and for all you do to Firewise your cabins. The burn pile is **NOT** available at the Fire Station until monsoons come but you can take your slash to Speedway Recycling & Landfill Facility at 7301 E. Speedway (Just east of Pantano/Speedway Cost is \$15 per truck load. (520) 290-8588

Parry Agave (Agave Parryi)

by Frank S. Rose

I have read of four Agave species in the Catalina mountains, three of which I have seen regularly. First there is the well-known century plant, the Golden-flowered Agave (Agave Chrysantha). This grows mostly in the lower elevations, like Molino Basin and Gordon Hirabayashi. A similar one can be seen on the Oracle Ridge trail. This is Parry Agave (Agave Parryi). The flower buds are red and the leaves are a different shape than the Golden-flowered version. The third agave is Shin-dagger, that can cover wide areas of the mountain, mostly at lower elevations. (The fourth is Agave palmeri, which I have not noticed in the Catalina Mountains).

The century plants are monocarpic, meaning that they only flower once in their lifetime. They put all their energy into a powerful stalk, sometimes more than 15 feet tall and then die. The word "century" suggests that it takes 100 years to do this, but the reality is much shorter. This means that in any given area only a portion of the plants will send up a flowering stalk. In May I have seen about a half dozen starting to bloom on Oracle Ridge. They are worth seeing.



2017 Fourth Of July Parade

To all who have asked... we are having our 42nd Annual 4th of July Parade on Tuesday, July 4th. The Woman's Club has sponsored this event for the past 41 years!! As of right now, the Grand Marshall is a well kept secret but will be revealed soon. Past parade favorites are already on board...and even a few new entries.

Do you have any contacts with marching bands, clowns, scout troops, fiddlers, classic car groups or has your own family considered a float? Want to be a part of the fun, but don't have your own parade entry? We have a HUGE need for drivers with vehicles (preferably convertibles, quads, and/or antique vehicles of any type) in anticipation of transportation of several parade participants down the parade route.

It's not too late to enter the parade!!! To volunteer, offer suggestions, or get answers to your questions, please contact Jennifer Shacter at [520-749-9233](tel:520-749-9233) (weekdays), [520-576-9329](tel:520-576-9329) (weekends), or kksowner@gmail.com. Mail your entry form without delay (there's one in this publication) to: Jennifer Shacter, 8750 East Bear Place, Tucson, AZ 85749-9158.



“Mind Sailing” Featuring the Work of Jeanne Hartmann

Friends and Neighbors (and friends I've yet to meet) Join me at the Mount Lemmon Community Center on:

June 16th-2P to 7P, June 17th- 11A to 5P, & June 18th- Noon to 4P

I will be showing 15 new watercolors and drawings, framed and unframed. My new Coloring Book, Memory Game, and Insight Cards will also be available.
Prints and Note Cards will be available as well.

Opening Reception– Friday, June 16th from 4P to 7P

Come and participate in the “Mandala Project” for children and adults.

Hope to see you there!

Jeanne Hartman– www.jeannehartmann.com



MOUNT LEMMON 42nd ANNUAL JULY 4TH PARADE
Tuesday, July 4th, 2017 – 12:00 Noon

It's that time again! Get out your costumes, mules, horses, kids, dogs, fancy vehicles, and instruments and sign up as soon as possible for this year's Mount Lemmon 4th of July Parade!

Name of Group _____

Main Contact Person for Your Group _____

Complete Mailing Address _____

Telephone Number(s) _____

All the above information is needed in case we need to get in touch with you with questions or last minute updates

CATEGORY: () ORIGINAL () PATRIOTIC () HUMOROUS

TRANSPORTATION: () WALKING () VEHICLE () WALKING with VEHICLE () HORSEBACK

This is an invitation for you and/or your group to join us on cool M Lemmon for our 42nd Annual 4th of July Parade. Please remit this form no later than Tuesday, June 27th to Jennifer Shacter – 8750 East Bear Place, Tucson, AZ 85749-9158 or e-mail to kksowner@gmail.com. For additional information, call Jennifer at

(520) 749-9233 or (520) 576-9329. The parade line-up begins at 11:15 A.M. at the intersection of Ski Run Road and Loma Linda Extension Road. Check in at the registration table to be given your parade number to display on yourself and/or your entry. Late check-ins and/or non-preregistered entries will not receive a parade number, participation certificate, nor be eligible for parade entry judging.

Please write what you want the announcer to say about your group when you pass by the MLCC (the judging area). If you don't write something, we'll have nothing to say about you or your group.

Who You Are _____

What Do You Call Yourselves _____

Where Are You From _____

Any Colorful Background Information You Want The Crowd To Know _____

We need to keep the parade moving, so please listen to instructions and directions when given. Do not throw candy into the crowd. Candy may be handed to children or placed on the ground at their feet along the parade sidelines so they won't run into the parade route. Neither Frisbees nor objects of any type may be thrown into the crowd. Entrants will PAUSE in front of the judges long enough to be announced by the Master of Ceremony and then MOVE ON and keep moving to the end of the parade route. In the interest of safety, we ask for your cooperation in that there is no animal petting, stopping to perform further down the parade route, etc. The parade will end at the school.

Signature _____ Date _____

Horse Rescue on Mount Lemmon has Happy Ending

by Sean Magee

On Friday, May 19th James Nourtsis and another rider were on the Red Ridge Trail when one of the horses they were riding got spooked. Lively Leslie, the horse fell 100 to 150 yards down the ridge, throwing her rider off. The rider wasn't injured but Lively was stuck in the thick brush below. A 911 call was placed around 3PM and the wheels of rescue were set in motion.

Barbara Tunison and myself were busy preparing a friends property for our upcoming wedding when we received a text message asking if we could help rescue a horse. We were told that most MLFD volunteers were not on the mountain and the injured horse was in need of help. We got there as fast as we could. When we arrived Jacob Jirschele (MLFD) told us to follow the yellow ribbons to where Dave Conto (sheriff), Joe Gunia (MLFD), and Carol and Tanner Mack (MLFD volunteers) were. About 1/3 of a mile down the ridge we found them cutting a trail and we joined in to assist in any way we could. The horse was stuck amongst several fallen trees, shaking and scared. The owner, James, asked who all the people were that came to help and Sheriff Dave said we were all "Lemmonheads" from town. As Joe continued cutting away the trees, Dave directed the operation and kept the horse calm along with the owner. Once we cleared a trail for Lively, the owner guided her up the ridge and down to the safety of her trailer. Just as she got to her trailer, Arizona Search and Rescue arrived. It was a happy ending to what could have been a tragic event.

Lively, although shaken from the experience was very fortunate. She sustained lacerations to her legs and her ankles were quite swollen but owner, James said he felt certain she would make a complete recovery. James considers Lively a part of his family, referring to her as his "daughter". After hugging all of the people who took time out of their day to help his injured and trapped horse, James took his horse home after a day that neither of them will forget anytime soon.



Slash Burning Suspended Until Monsoons

By Dan Leade, MLFD captain

Due to current fire activity within the Coronado National Forest, MLFD will be suspending the collection of any slash or pine needles until the monsoons bring a sufficient amount of moisture to make burning safe. MLFD is proud to provide the slash burning service to our residents. This service allows our community to remain FireWise. Unfortunately when conditions become hotter and drier it becomes unsafe for us to burn as the potential for spot fires becomes high. In addition, continuing to add to the pile when we can not burn adds a potential hazard to any helicopter crews working on fire and medical calls. We will resume collecting after we are able to burn the current pile when the monsoons arrive.

A few pointers on how to keep our program running smoothly:

1. *We burn mostly "slash"*. Slash is the branches that that you trim from your trees, or those that are on the ground. These can be piled at the Fire Station helicopter landing zone (restrictions permitting). Please stop in at the Fire Station and a firefighter will assist you.
2. *We do burn pine needles*. Your pines needles must be in paper garden bags (these can be purchased at your local hardware store). Please place bags at the designated pine needle area to the South of the burn pile (restrictions permitting). These are added to the pile after it is burning to ensure proper combustion. Please collect needles with a rake instead of a shovel. We have learned over the years of burning that dirt, still, doesn't burn.
3. *We do not accept "rounds"*. Rounds are the tree trunks from fallen trees. Although we accept the slash from fallen trees, the rounds take too long to burn and allow a greater opportunity for embers to spread fire to our hillside. Rounds are currently still allowed to be dropped at the intersection of Catalina Highway and Loma Linda Extension.
4. *We **NEVER** accept construction debris or furniture*. The Environmental Protection Agency authorizes MLFD to burn natural vegetation only. Failure to comply on the community's part could result in fines and/or sanctions.

Once again, MLFD is proud to be able to provide a great service to our community by burning off slash and pine needles to keep our community FireWise. We hope that this delay does not cause any inconvenience. Refer to the FireWise article for alternative location to dispose of slash (page 7 of this months Echoes)

2017 Summer Fire Restrictions Starting

by Ken Born, USFS

All federal lands in southwest Arizona, including the Santa Catalina Ranger District, will implement campfire and smoking restrictions, known as Stage 1 fire restrictions, ahead of Memorial Day weekend in order to protect the public and reduce preventable human-caused fires. Under Stage 1 fire restrictions, fires, campfires, charcoal, and wood stoves are allowed on public land in developed campgrounds only. The restrictions also limit smoking to within enclosed vehicles or buildings or in developed campgrounds. Using a device that is solely fueled by liquid petroleum or LPG fuels that can be turned on and off is allowed in areas that are clear of flammable materials. Criteria used to determine when to implement fire restrictions include current and predicted weather, fuel moisture, fire activity levels and available firefighting resources. Fire restrictions will likely remain in effect until we receive significant precipitation. Information on Fire restrictions across the state can be found at <http://firerestrictions.us/az>. For fire restrictions on all lands in Arizona and New Mexico, call the Southwest Area Fire Restriction Information Line at 1-877-864-6985

THANKS FOR CARING AWARD

The Mount Lemmon Homeowner's Association honors:

David Blatt

This past winter hit some of us really hard. Between the downed trees and the knee deep snow, we had our hands full. David cleared snow off Retreat, Upper Goat Hill, parts of Carter Canyon on his own time with his quad. He cleared his neighbors driveways to help them access their homes and even plowed Tucson Ave at 8:00 PM one night to help the residents of that street get to their cabins without trudging through the snow. This appreciation award is long over-do! Thank you for caring for your neighbors and doing what needed to be done, no matter the time or the temperature!

Looking For a Few Good Volunteers

by Pete Krauss

We need people to spend a few hours in the MLCC Visitors Center to greet Mount Lemmon guests, primarily on Sundays as Paul usually covers Friday and Saturday. A good way to learn the ropes would be to spend a little time with Paul. He is always ready and willing to teach others. The hardest part is putting up the flag and operating the copy machine. The rest is just visiting with our guests about what there is to see and do on the mountain.

The tourist season is really starting to happen with the warmer weather in the valley. It really is fun and interesting to talk to our visitors who come from all over the United States and the world. Keeping our center open is good for businesses on Mount Lemmon, it supports the Forest Service, reinforces our relationship with Pima County Parks and Recreation (who provides us with the MLCC facility for our many meeting, parties, and programs).

Contact Pete Krauss at teamkraus@msn.com if you'd like to volunteer or call him at 520-887-0524, or 520-576-9136, or 520-235-6904

Still owe Dues?

Fill out the coupon below and mail your check to:

**MLHOA
PO Box 699
Mount Lemmon, Az. 85619**

Mount Lemmon Homeowner's Association Annual Dues

Voting member (property owner) \$35.00 Non-voting member (renter or friend of the mountain) \$35.00
Make checks payable to MLHOA and mail to MLHOA P.O. Box 699 Mount Lemmon, AZ 85619

Name _____

Address _____

City/State/Zip _____

Home Phone _____ Mount Lemmon Phone _____

For your Records 2017 MLHOA Dues

Ck # _____

Amt-Paid _____

Date _____

Willow Canyon News by Sally Crum



View from Windy Point

Willow Canyon residents have been hard at work, raking and removing pine needles and other fuel sources from around their cabins. They have already filled 2 dumpsters with the material, and continue to work to reduce fuel and make our canyon more “FireWise”. Keep up the good work!

The Willow Canyon Cabin Owner’s annual meeting is scheduled for Saturday, June 3rd at the Lizard Rock Group site at Rose Canyon Lake. The meeting begins at 3:00PM with a great potluck, thanks to the many great cooks in our association. Immediately following and prior to the annual Business Meeting, we will have speakers from the U.S. Forest Service, Mount Lemmon Fire District, the Sheriff’s Department, and Neighborhood Watch. A raffle will immediately follow the Business Meeting. This is a great opportunity to catch up with your friends, meet your new neighbors and speak with representatives from the organizations that provide support for our wonderful mountain neighborhood.

Lou Crum and Sandi Triplett are volunteering their time with the Mount Lemmon Fire District. Thanks for supporting this critical service! The MLFD depends heavily on the support of volunteers; please consider supporting them with your time or donations.

BUNKO IS BACK!!!

Friday, June 9th at 6:30pm at the Mount Lemmon Community Center

Bring snacks to share, what you want to drink and your smiling faces. Linda Mulay will go over the rules for those who don’t know how to play.

Questions? Call Linda at 520-576-1417

Stewart and Danny in Summerhaven

by Lorri Hans



Fear and relief washed over the boys when they realized that they weren't alone, they had Rufus, an adult right there with them so everything would be okay now. But at the same time, things back at the lake were not so good...



Sweat Pea and Sammy had gone in search of the boys when they didn't check in after 2 hours. The frantic parents were running laps around the lake asking everyone they saw if they had seen a small squirrel and a baby duck playing near by. Alas, no one had seen them. Soon they would be joined by Danny's parents and the search went on to a larger area when the ducklings parents took flight and scanned the forest around them. Trying hard not to panic, Sammy reminded Sweet Pea of her own adventures at their age and assured her they would find the boys safe and sound, but that didn't stop his heart from racing at the thought of his young boy being hurt or lost in the woods.

Rufus told the kids that the first thing they needed to do was get a message back to the parents that the boys were okay. After that, they would decide how they would get back home. Rufus told the boys to stay put down by the creek where no one could see them until he returned. The boys agreed but as soon as Rufus was out of sight, they slowly crept up the creek's edge to watch the activity of this wonderland called Summerhaven. Stewie noticed the people didn't always eat all their pizza or cookies and not many cleaned up after themselves so he saw nothing wrong with dashing across the street to get a few nibbles for himself and Danny. Stewie ran to the patio area of the Cookie cabin and grabbed a full slice of pizza and turned to run back to the creek. He didn't take into account how heavy the pizza would be and his little legs trembled from the weight of the food he was dragging. Finally he reached the other side of the road, dropping the pizza for a moment while he yelled for Danny to come help. Even though he only had his back turned for a minute, the pizza slice was gone when he looked back. What the heck?? Stewie caught only a glimpse of a Raven flying away with his treat. He would have to ask Rufus who that was because surly Rufus knew every Raven in the forest!

Rufus flew as fast as he could back to the lake to find Sweet Pea and Sammy. He found them high in a tree yelling for their son to answer and come home. Rufus told the parents of the adventure the boys were on and that he was going back to figure out how to get them home. He assured the young parents that they were fine, just a long way from home. With the relief of knowing their kids had been found, the parents returned to their homes to await their youngsters and to decide an appropriate discipline.

Rufus returned to the creek where he had left the boys and started planning how to get them home. Rufus knew he could fly with Stewie on his back but Danny was too heavy for him to carry. Now, ducks can fly but Danny hadn't learned how yet. Rufus decided he would have to teach the boy how to fly so they could all go back together, but how can a Raven teach a Duck how to fly? He brought Danny up to a clear area and said, "Okay kid, just flap your wings and you'll fly." So Danny flapped and flapped with all his might but to no avail..."Maybe you need a running start?", said Rufus. So Danny took off waddling as fast as he could, all the while flapping his wings. He almost got off the ground once but when he looked back to yell, "Look at me! I'm flying!", his head flew under him and he rolled like a beach ball down the road. This was going to take some time, thought Rufus. This kid is not coordinated enough to fly yet. So, Rufus came up with another plan. "Let's go visit Stewie's grandparents. They just live right up the road. Maybe they have handled a problem like this before.", said Rufus. As they walked along the boys were silent, knowing they were in a world of trouble when they got home but at least they were going to get back home! Suddenly Stewie remembered the pizza he lost to the Raven and turned to Rufus and said, "Hey Rufus, do you know the Raven that flew up and stole our food? He was big, black, and cawed as he flew away. You know him?"



Mount Lemmon Listserv

Receive information from the Mount Lemmon community by signing up on the **Mount Lemmon Listserv**. Send an email to the listserv at Announcements@mtlemmonhoa.org with **your name and email address**. We will sign you up and you will receive instructions on how to use the listserv.

Important Numbers:

Road Conditions 547-7510
 Post Office 576-1427
 Trico Electric 744-2944
 Water District 576-1538
 Amerigas 887-7120
 Arizona Propane 750-9116



PROUDLY SERVING ARIZONA FOR 42 YEARS

Arizona Propane

GAS PRODUCTS SALES & SERVICE

- ✓ *FAMILY OWNED*
- ✓ *COMPETITIVE PRICING*
- ✓ *NO HIDDEN FEES*
- ✓ *UNBEATABLE SERVICE*
- ✓ *RV COMPATIBLE*
- ✓ *RESIDENTIAL & COMMERCIAL*

520-750-9116

APRILK@ARIZONAPROPANE.COM



**ENJOY A
MOUNTAIN
OF SAVINGS!**

COMMERCIAL SALES
TIM 520-444-2576
TIM@ARIZONAPROPANE.COM

Mount Lemmon Community Center

The Mount Lemmon Community Center (MLCC) is part of Pima County's Natural Resources Parks Recreation (NRPR) department. The Mount Lemmon Community Center, Inc. is organized exclusively for charitable, social and educational purposes. The facility is dependent upon local volunteers to staff and support the visitor's center. Our mission is to welcome all who visit the facility and promote Summerhaven, Mount Lemmon and Pima County Arizona.

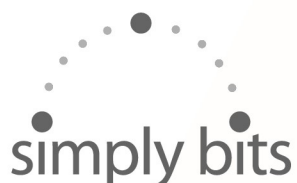
Reservations to use the Community Center can be made by calling Kelly Cheeseman at the Pima County Parks and Recreation phone number: 520.877.6155 or E-mail Kelly.Cheeseman@pima.gov



If you would like to send and receive timely information from the Mount Lemmon community, you can sign up to the Mount Lemmon Listserv. Send an email to listserv at Announcements@mtlemmonhoa.org with your name and email address. We will sign you up, and you will receive a welcome note with instructions on how to use the listserv.

****Just Call 911****

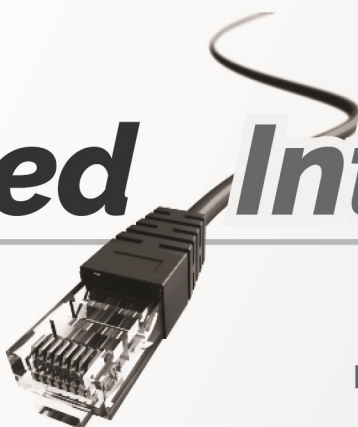
Becoming friends with our local firemen, EMT's, and law enforcement officers is bound to happen when we see them so often. It has become second nature to just call them directly instead of using the 911 services. It is very important to their budgets that we utilize the 911 dispatch and not call directly to the firehouse or our sheriff's cell phones. If we don't go through the proper channels, the agency doesn't get credit for the service they have performed. We ask that if you need medical attention, CALL 911. If you are in need of law enforcement, CALL 911. If you see a fire, CALL 911. It will benefit us all in the long run!



Residential Plans
Starting at **\$24.95**

High Speed Internet

Avoid the Seasonal Rush!
Schedule Your
Installation Today



For more information

Call 520.547.7445

or email Lemmon@simplybits.com

5225 N. Sabino Canyon Rd, Tucson, AZ 85750

www.simplybits.com

Newspaper Delivery

Jenni Avram will provide the Sunday paper for residents at a price of \$2.50, payable in advance. Please contact Jenni at Mount Lemmon Realty to place your order 576-1333. Delivery will be by 11:30 on Sunday mornings at Mount Lemmon Realty.

Restaurant Hours

The Cookie Cabin

Monday thru Friday 10:00 - 5:00 PM
Saturday and Sunday 10:00 - 5:00 PM

The Iron Door

Monday, Thursday & Friday
10:30 AM - 4:30 PM
Saturday & Sunday
9:00 AM - 5 PM

Breakfast served from 9AM-11AM
Saturday and Sunday
(Free Sky Ride with breakfast)

The Grubstake

10:30 AM - 4 PM (Weekends only)

Sawmill Run

Monday-Thursday 10:30 AM - 5:00 PM
Friday 10:30AM - 8:00PM
Saturday 9:00 AM - 8:00 PM
Sunday 9:00 AM - 5:00 PM
Breakfast served from 9AM-10:45AM
Saturday and Sunday only

Sawmill Run Monthly Specials

First Saturday of the month:

Chicken stuffed with apples and brie cheese with
mashed potatoes and green beans-\$13.99

Second Saturday:

Chicken bacon Alfredo with side salad and garlic stick
\$13.99

Third Saturday:

New York Strip steak with loaded baked potato, broccoli and side salad-\$15.99

Fourth Saturday:

Salmon with Rice Pilaf, green beans and a side salad-\$14.99

Fish Fry Every Friday Night -\$13.99

MLHOA

The Mount Lemmon Homeowner's Association (MLHOA) was formed in 1969 to protect the welfare of the Mount Lemmon community and to be involved in all aspects of its improvement. The concerns of the organization are not limited to private property owners. Full membership with voting rights is accorded to private owners and leased land holders upon payment of yearly dues. Being organized, having a legal fund and having active **LOCAL** voice participation enables the Association to accomplish most of its goals. Pima County has said the MLHOA is the strongest and most respected homeowner's organization in the entire county. Dues are \$35 per year payable in February. Renters and Friends of the Mountain may obtain membership for \$35 a year. The Annual Dinner and Meeting is held each year on the first Tuesday after taxes. To join the Mount Lemmon Homeowner's Association, send a check to Box 699, Mount Lemmon, AZ 85619.

The most visible product of the MLHOA is the **ECHOES**, a newsletter published ten times a year. The Association organizes social events such as potlucks, pancake breakfasts, ice cream socials and raffles, enabling owners to mingle. Members of the Board are: Mike Stanley, president; Jenni Avram, vice-president; Linda Currin, treasurer; Sally Crum, secretary; Lorri Hans, Event coordinator; John Mulay; Pete Krauss; Debbie Fagan; Glen Schager; Mike Bernstein; Tom Thomas, Bill Piatkiewicz; Carrie Reitz, and Jerry Taylor.

Advertising in the Echoes is \$10 per issue for a proportional business card and \$50 per issue for a 1/4 page ad.

Echoes Editor: Lorri Hans (mtlemmonpielady@gmail.com)

TRUELOVE WINDOW CLEANING
(formerly CRYSTAL VISION)

Professional and Friendly
Licensed, Bonded and Insured



(520) 465-7195
Scott Truelove
Owner / Operator
www.truelovewindowcleaning.com

The Living Rainbow, Inc


P.O. Box 753
Mt. Lemmon, AZ 85619
(520) 576-1519
rainbow@mindspring.com
fax (520) 298-4770
Debbie Fagan

Windchimes and Gifts since 1979
Celebrating our 35+ year in business

dennis cozzetti
cozzetti construction inc.
520 665-1648
dennis@cozzetticonstruction.com



(520) 576-1333
(520) 576-1300 PHONE/FAX



MOUNT LEMMON REALTY, INC.

ROBERT ZIMMERMAN
Broker
bobzim@mindspring.com

P.O. BOX 1
MT. LEMMON, AZ 85619-0751
MtlemonRealty.com

P.O. Box # 32683 Tucson, AZ 85751

Estab.  1984
690-0808
"Your Dependable Truckers of Tucson"
www.deserttrucking.com

John "J.J." Johnson
Cell (520) 449-8800
Fax (520) 690-0011

Transfers
Super 16 & 18
Semi's & Bells
.10 & 12 Wheel Dumps

M. C. Harmon Construction, LLC
General Contractor

520-576-1546

Building on Mt. Lemmon since 1979
Specializing in Custom Log Cabins

General Plumbing Electrical Roofing
ROC 219566 ROC 221184 ROC 221185 ROC 221117

Matthew C. Harmon Christopher J. Harmon

Elegant Excess

Specializing in
Beaded Badge Holders for
Nurses, Teachers etc.

By Carrie Reitz
Phone 520-404-6772
See at: elegantexcess.com

GRIFFITH BUILDING


OVER 30 YRS EXPERIENCE
DESIGNING - BUILDING
REMODELING AND REPAIRING
VACATION HOMES & CABINS
GARY 256-9816 LIC # 062647

Sky Island Construction

BUILDING ON MT. LEMMON
GREG FERGUSON - PRESIDENT
Office: 471.6322
Fax: 751.7918
Lic# 163522

SKYISLANDCABINS@AOL.COM
LICENSED, BONDED, INSURED

(520) 576-1333
(520) 576-1334 Res
(520) 576-1300 PHONE/FAX



MOUNT LEMMON REALTY, INC.

FRANCES ZIMMERMAN
Sales Assoc./Property Mngt.

P.O. BOX 1
Mt. Lemmon, AZ 85619-0751

George R. Reitz
Realtor®
Multi Million Dollar Producer



Home/Office: (520) 722-1265
Cell Phone: (520) 444-1439
Fax: (520) 303-4975
greitz2@cox.net

Real Estate
Marketing Professionals of Tucson

7481 E. Tanque Verde Rd., Tucson, AZ 85715

(520) 576-1333
(520) 576-1300 PHONE/FAX
(520) 861-0161 Cell

MOUNT LEMMON REALTY, INC.

JENNIFER L. AVRAM
Sales Assoc./Property Mngt
jennimir@mindspring.com

P.O. BOX 1
Mt. Lemmon, AZ 85619
mtlemmonrealty.com

Cabin cleaning made easy

Next day, same day service available
Open/close cleaning jobs bid on site
Free estimates, flexible hours



Debbie Weatherly
520-203-3740

Email: Debbie.weatherly@aol.com



Eclectic and Unique
Fashion, Folk Art & Furnishing

(520) 320-5699
picantedesigns@hotmail.com
www.picantetucson.com

2932 E. Broadway
Tucson, AZ 85716

EL RANCHO ENCANTO ASSISTED LIVING

EXTRAORDINARY HOMES. SUPERIOR CARE

Pam Haskell

Phone: 520-885-0004
Fax: 520-885-7077
Cell: 520-245-8292

5705 & 5803 E Ft. Lowell
Tucson, AZ 85712

pamhaskell@elranchocanto.com
www.elranchocanto.com

June 2017

Sun Mon Tue Wed Thu Fri Sat

				1	2	3
4	5	6	7	8	9 Bunko 6:30pm MLCC	10 Full Moon
11	12	13	14 Flag Day	15	16 Art Show MLCC	17 MLWD-8a MLHOA-10a At MLWD MLWC-1p (at fire station) Art Show
18 Father's Day Art Show MLCC	19	20	21 Summer Solstice	22	23	24 Women of the Blues Concert MLCC
25	26	27	28	29	30	

Summerhaven June Church Schedule at MLCC

June 4th– Steve Wright– Marriage Missions

June 11th– Currently open

June 18th– Father's Day– Video service

June 25th– Andrew Hill– Interim Pastor

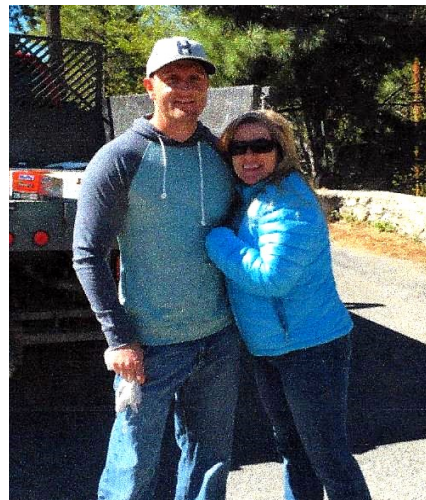
To The Wonderful Mount Lemmon Family

by Dennis Cozzetti

The generosity of the community came through in a big way. Our goal was exceeded by over \$1,000.00 (hopefully for a cruise on the Columbia & Snake rivers) as a “thank you” to Randy and Kathy Ogden. Thank you to everyone who contributed and helped with this. We hope they enjoy some well deserved time to relax and enjoy. The impact that Randy had on the Mount Lemmon Fire District and Summerhaven will resonate for years to come.

And once again a large number of folks turned out for the annual Spring Clean-up (and Cheatgrass Pull). It was pretty cold this time of year and a few can attest to how cold Sabino Creek is. Over the winter, residents picked up the trash left by visitors so there wasn't much in the way of trash to collect. Instead we attacked the cheatgrass. The really good news is there is a lot less cheatgrass in the village than in previous years. Maybe we're winning! At the very least, we're gaining ground, so keep at it, it's working!

And a very special thank you to the Mount Lemmon firefighters (and family) who showed up in force, *on their own time* to help out with the cleanup. Thanks Mike Cuestas, Joe Gunia, Dan Leade, Peter Norton, and Aaron Lindflot, and to the Mount Lemmon Water District: Mike Stanley, Carol Niehoff, and Mark Williams.



Honoring Jennifer Shacter

by Lorri Hans

Each year at the Annual Homeowner's Dinner, one person is picked to receive the Summit Award. This award is given to those who give of themselves, their craft, their time, and their hearts for the good of the community. After Jennifer picked the winning raffle ticket for her final afghan, that benefits the MLHOA and the MLFD, Mike Stanley announced it was time for the award. As Linda Currin stood before us and described the giving nature of this year's recipient, a tearful Jennifer could be seen standing near by. The more Linda described the acts of kindness, the clearer it became to all that she was speaking of Jennifer. We all know she deserves this award and we will all miss her yearly afghan raffles, although I personally think she needs to continue making them until I finally win one! Congratulations to Jennifer Shacter for all she is and does for our community!



**Mount Lemmon Homeowner's Assoc.
P.O. Box 699
Mt. Lemmon, AZ 85619**

PRST STD
US POSTAGE
PAID
TUCSON AZ
APS DIGITAL PRINT
85713

Parting Shots

Going Green...New Eco-Friendly Community Center Weed Eater

