

# The Mount Lemmon Echoes

## Lions and Tigers and BEARS! OH MY!

by Lorri Hans

Tom Riley has been on Mount Lemmon since 1993 when he and Patsy bought a small corner lot. Tom built their first cabin there and then built 2 more. His passion for woodworking grew stronger while living amongst the pines. He is completely self taught with every facet of his craft. Tom says at one point he had 5 grandfather clocks chiming at once and realized it was time to stop making clocks. Patsy asked if he thought he could carve a moose and that started Tom in the direction of carvings.

Tom started by using a mallet and chisels. He found plenty of pieces of wood to work with just walking the mountain. His carvings were small at first, wall hanging items and more decorative things just for inside the house. Once Patsy got him interested in carving the moose, it started him thinking of larger carvings and that led him directly to his bears.

When you think of Tom Riley, you immediately think of his bears. He has carved bears for quite a few locals. Some of his carvings are done on dead trees and others he has done at home then mounted at the persons cabin. He says he prefers to cut down the dead trees and carve them at home and he has 2 reasons for this preference. First of course, is that it is much easier to work at home and second is because even though the tree is dead it continues to produce sap. That sap can erode the base of the carving and eventually be the reason it rots. Tom says the only guarantee he can make with his bear carvings is that it will crack. There's no way around it. However,

Tom treats his carvings with a linseed oil that can be reapplied yearly and will fill in the cracks and keep your bear looking brand new.

Once Tom has found a piece to carve, he doesn't know if the tree has worms or is decayed until he starts making cuts with his chain saw. He says when working with wood you never make mistakes, only firewood. Many times Tom will have a carving nearly completed when he comes across worms. He can keep trying to carve deep enough to get past them but sometimes he has no choice but to scrap the project and find a new piece to work with, thus creating firewood.



Tom says if anyone is interested in carving anything, protective wear is a key factor. Whether you will be carving daily or just once in a while. He recommends Kevlar chaps, goggles, and ear plugs. He says it's the infrequent woodworker that is injured more often than the avid worker.

Tom's bear hobby has literally boomed this past year. He is busy most days carving the custom orders he gets. The one thing Tom would like to say to the community is that he carves from 10a-3p typically and that if the noise is ever an issue, to please contact him and he'll stop for the day. He said he takes no offense at being asked not to carve that day as it gives him permission to just sit on his deck and relax for the day. Tom's talent can be seen all over the mountain and adds such character to what was once just a stump from a fallen tree.

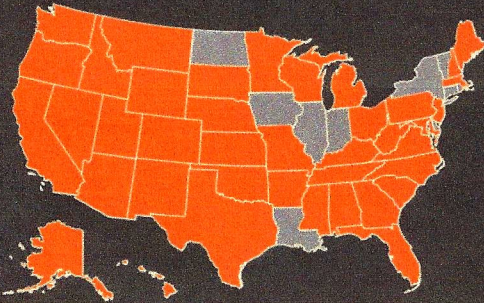


# FireWise on Mount Lemmon, Arizona

by Susie Pearce and Glen Schager



Number of **people/residents** living in Firewise communities: **1,450,621**



The number of **states** that have recognized Firewise communities:

**40**

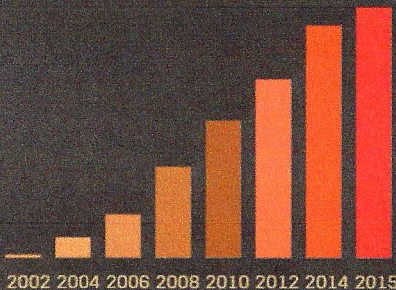
## Firewise

### FIREWISE COMMUNITIES/USA® PROGRAM



**15**  
years old  
(piloted in 2002)

Number of states that have been in the program for 5 years or more: 39 of 40



Number of communities:


The program has grown from communities in 2002, to **12**

**1,232** communities, as of February 1, 2016.



Wildfires destroyed an average of 3,875 structures annually from 2011-2013. (Source: NIFC)



  
Firewise communities range from small rural clusters to large developments.

2003: \$1,577,478



Community Investment



In 2015, there were 68,151 wildfires. (Source: NIFC) Firewise principles help reduce the wildfire risk to your property.



## Mount Lemmon Homeowners

by Michael Stanley, president



Howdy!

It seems that summer has just flown by, but it's been eventful with locals partying and keeping the community center filled with activity. Our locals have been working to keep this center open for the public over the weekends. We need your help in doing this. It really is fun to spend an hour or two meeting people from all over the world. They ask easy questions and your answers provide them insight to our community. Come on over and try an hour or so. You may find you like it. Ask Pat and Fred Kline or Pete Krause how they spend their time.

The monsoons fell just before the start of July but refused to fall upon the July 4th parade. As it usually happens, our rains were pushed over to New Mexico. We didn't get a very large rain until the middle of the month. Some of the storms were spectacular with lightening and lots of rain. So far Pamela at the post office has measured over 16 inches and we have until the end of September to track this year's monsoons. Sabino Creek started flowing after there was just over 10 inches of precipitation. It's nice to hear the flowing water as it proceeds toward the valley. As I write this we are getting ready for the 3rd Saturday of the month. This weekend is when the community meets and conducts business but continues to be fun? I guess the question mark might surprise some of you. Our community has a large number of items to deal with. We start with the Water District at 8 AM, then the homeowners meet at 10 AM. Meetings continue with the Woman's Club Board and the members meeting at 1 PM, usually followed by a presentation at 2:30 PM. This month's presentation is by Dr. Mark Kartchner on the Kartchner Caverns State Park, located down by Tombstone off Highway 90 south of Interstate 10. We are blessed with neighbors who often share the inside scoop! If you haven't attended one of these, you are missing out on information that is designed for the mountain. If you receive the Echoes you are a member of a wonderful group. Invite your neighbors who are not members to consider joining.

So, most of you know that the MLHOA has an annual event coming up on the Labor Day Weekend. Our Pancake Breakfast is almost world renown. Hope you get a chance to get to the Fire Station on Sunday, September 4th starting at 8 AM. There is a nominal charge and all the funds go to the Fire District. Speaking of fun things to do. Lorri, your great Echoes Editor, put on a really great feast last Friday night. It was termed "Spaghetti Dinner" served at the Fire Station. What a wonderful dinner. Spaghetti, sauce, meat balls, salad, and bread. Plus, lots of locals having a grand time. There were even hikers that attended. **Special Thanks** to Lorri and all of her helpers that made this dinner amazing. Well, fall is falling fast and I need to get to work on my other articles. I have a funny bird that has a fun story. Be sure to mention the Homeowners to your neighbors.

Thank you!

Michael Stanley

## Mount Lemmon's Quiet Army

by John McLean

My pockets are empty (again).

After enjoying the mountain trails for over forty years, I've gotten into the habit of picking up the trash as I wander along. On many trails, my pockets are full by the end of the hike. Yet, when I hike the trails at the top of the mountain, I often come back empty handed. I attribute this to my fellow soldiers in the Mount Lemmon's "quiet army".

The quiet army are those of our community who go out of the way to keep our Mount Lemmon neighborhood in great shape. Many of us have fallen into the habit of picking up the bits of garbage (and the stray beer can) along the roads and trails to keep our community in pristine condition. Given the number of visitors, it's remarkable how litter free our neighborhood remains. This is another example of the "litter lemma": if the area is clean to begin with, it is likely to remain so.

And then there are the more subtle aspects of our environment: the enjoyment of clean air, dark skies, and quiet evenings. Evenings are our favorite time on the mountain, when we can listen to the owls, count the stars, and take in deep draughts of the clean air. The quiet army respects these intangibles just as much as we do.

So to all members of the quiet army, thanks for all you do to keep Mount Lemmon such a special place.

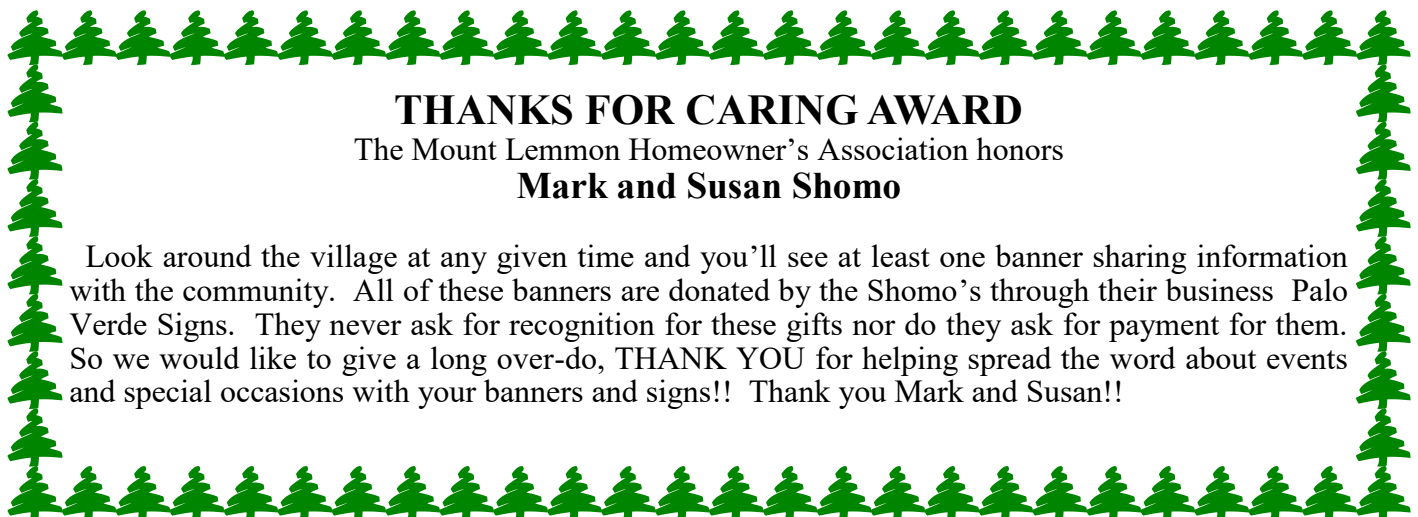
## Thank You For Your Support!

by Joseph Gunia, MLFD chief deputy

On behalf of the Mount Lemmon Fire District, I would like to thank everyone for participating in the Spaghetti Fundraiser Dinner that benefitted the Fire District. Who knows...maybe this can become an annual event!

I've been with the Mount Lemmon Fire Department for 17 years and truly appreciate the communities support throughout those years and for the years to come.

And a special thank you to Lorri Hans for making it all happen.



## THANKS FOR CARING AWARD

The Mount Lemmon Homeowner's Association honors

**Mark and Susan Shomo**

Look around the village at any given time and you'll see at least one banner sharing information with the community. All of these banners are donated by the Shomo's through their business Palo Verde Signs. They never ask for recognition for these gifts nor do they ask for payment for them. So we would like to give a long over-do, THANK YOU for helping spread the word about events and special occasions with your banners and signs!! Thank you Mark and Susan!!



BENEFITTING THE  
MT. LEMMON FIRE DISTRICT

**Golf tournament is postponed until November of 2017 due to unanticipated issues for the golf classic**

**Sometimes Things Get in The Way**  
by Randy Ogden

As always in life, sometimes it throws us a curve ball while we are looking at the flowers in center field. Due to unforeseen issues we have to postpone the yearly Golf Classic fundraiser for the Mount Lemmon Fire District until November of 2017. We apologize to all of you who were looking forward to this event and hope you'll sign up again next year with the same enthusiastic outlook as you have had in the past.

But we still have a great annual fundraiser you can attend this month! Come on over on September 4, 2016 and enjoy a pancake breakfast with your friends and neighbors. This event has always been a fun and tasty event and this year will be no exception! Hope to see you all there!

Again, we apologize for the delay in our annual Classic Golf Fundraiser but we will see you next year on the greens!

**Mount Lemmon Homeowner's Association Annual Dues**

Voting member (property owner) \$35.00 Non-voting member (renter or friend of the mountain) \$35.00

Make checks payable to MLHOA and mail to MLHOA P.O. Box 699 Mount Lemmon, AZ 85619

**Name** \_\_\_\_\_

**Address** \_\_\_\_\_

**City/State/Zip** \_\_\_\_\_

**Home Phone** \_\_\_\_\_ **Mount Lemmon Phone** \_\_\_\_\_

**Cell/work/alternate phone** \_\_\_\_\_

**Email address** \_\_\_\_\_

**Amt Enclosed** \_\_\_\_\_

**For your Records  
2016 MLHOA Dues**

Ck # \_\_\_\_\_

Amt-Paid \_\_\_\_\_

Date \_\_\_\_\_

## Mount Lemmon Woman's Club News

by Mary Hunter, president

**CHEMO CAPS**— Over the past five years the Woman's Club has taken on the project of sewing chemo caps for the Cancer Center. This project was begun at the encouragement and suggestion of Linda Kent, our good friend and club member who recently lost her long battle with cancer. We have continued making chemo caps this past summer and to date have donated 200 chemo caps for 2016. Over the years we have sewed over 1000+ chemo caps! We are bringing this project to a close but we will continue sewing every Friday, June through August, 2017— just a new project. Stay tuned for more details.

**DONE-IN-A-DAY**— Our done-in-a-day project for August was "Make Way for Books". This is a great organization begun by one woman who saw a need and did something about it. "Make Way for Books" is a Tucson based non-profit organization whose mission is to give all children the chance to read and succeed. They provide age appropriate books and quality picture books to economically disadvantaged children in under-resourced pre-schools and daycare centers. The members of the Woman's Club donated books for ages infant through seven (7) years old. Good Job Ladies!!

**KARTCHNER CAVERNS**— On August 20th, following the Woman's Club meeting, Mark Kartchner gave an outstanding talk on the discovery and development of Kartchner Caverns. These caves were discovered on his family property so he was involved from the beginning. His talk included a slide show of pictures and little known facts about the discovery. Thank you Mark for sharing your time and knowledge on this subject.

If you have an idea for a speaker or program that would be of interest to the Summerhaven community, please contact the Woman's Club ([mary@hunteraz.com](mailto:mary@hunteraz.com)) and we will try to arrange it for summer of 2017. These once a month programs are open to the entire community and we would like community input.

**MLWC MEETING**— The next meeting of the MLWC will be held Saturday, September 17th at 1pm at the MLCC.

### September 2016 Calendar

4th— MLFD Pancake Breakfast  
 16th— Full Moon— Bunko at 6:30pm MLCC  
 17th— 8am MLWD— 10am MLHOA— 12pm Oktoberfest at Ski Valley— 1pm MLWC  
 18th— 12pm Oktoberfest at Ski Valley  
 24th— 12pm Oktoberfest at Ski Valley  
 25th— 12pm Oktoberfest at Ski Valley

### BUNKO!!!!

Come on over to the MLCC and have some fun on Friday, September 16th at 6:30pm-9pm

Bring snacks to share and your beverage choice.

You'll have lots of fun, mingling with your neighbors or meeting new people.

Last month everyone had a great time so come join the fun!

Call Linda Mulay at 520-576-1417 if you have any questions.



## **Bird Brain!**

by Michael Stanley

There is a funny thing happening at the Water District. Since summer is here, we sometimes leave the door to the school open. During the day it allows fresh air in to help keep the rooms cooler. While the door is open there is a way for not only air to come in, but varmints and birds too. There have been many times that we need to find a wayward bird, catch and return him to the great outdoors. This summer there's something a little different going on. Once particular Yellow-eyed Junco enters the office and checks out little morsels that have fallen to the floor. So Hydra, at least it seems she's a "she", just pecks at the spots on the floor apparently getting some bits of food. When I catch a glimpse of her movement, I start talking to her with words like, "What are you doing in here again?" She just keeps pecking and occasionally looks up to see my location. She is not afraid or skittish at all. When I get too close, while talking to this little bird, she flies up to a file cabinet and just watches me. My conversation goes from, "Where are you going?" to "You need to be outside!" If I move and tell her it is time to get out, she will fly out to the mud room. Next, she will fly out to the porch and wait. I usually grab a hand full of Leroy's and Jeannie's Kettle Korn crumbs, scatter them on the porch, and close the door. This has happened 3 or 4 times. She is a sneaky bird! If the door is open, she will soon find her way back into the rooms and just keep pecking away.

I've told my story to the guys who tell me I have been working too much. I have a witness though. Carol was in the office working on the request for the former Pima County Transportation yard and the bird came in almost to Carol's feet. As Hydra realized she was seen, and Mattie, our dog awoke to the sight of the bird, all three raced out the door. Feathers, fur, and feet flying! Carol had her first experience with HYDRA our OFFICE bird.

Today she was back and I caught sight of her as she flew from the kitchen out the doorway. She is a strange little Yellow-eyed Junco and enjoys the water district's office floor. She is always welcome but with all of that pecking, perhaps I should get her to type out some of these EPA reports? She probably works for peanuts! Getting that MLWD t-shirt to fit is going to be another challenge.

---

## **Willow Canyon Summer News**

by Sally Crum, Willow Canyon representative

On July 10th, we had a close call with a fire in Willow Canyon caused by an abandoned campfire. It was discovered at 2am and was immediately reported to 911. A number of cabin owners responded with shovels to help contain the fire until the MLFD arrived. MLFD responded immediately and brought the fire under control quickly, minimizing the damage. No structures were involved, even though the fire was quite close to several cabins on the South Rim. A huge THANK YOU to MLFD!

On August 19th a bear cub was reported at one of the cabins on the North Rim of Willow Canyon. It was very curious, peeking in the windows, rattling the screen door, and climbing on a stump to empty a humming bird feeder. Arizona Game and Fish responded and are keeping a close lookout for any further bear encounters. Cabin owners are reminded to keep garbage and other food sources locked up and to report any new encounters.

The annual USFS compliance inspection was completed on August 15th. This was a follow-up inspection to determine if all issues discovered during last year's inspection had been corrected and to make sure that there were no new issues. Letters regarding the results of the inspection will be issued at a later date.



## Prescribed Burn Operations Possible on Mount Bigelow

by Ken Born, District Ranger, USFS

Santa Catalina Ranger District crews are currently evaluating conducting a prescribed burn of 180 acres on Mount Bigelow. Operations may begin during the first or second week of October. The burn unit is located north of Mount Lemmon Highway and south of Bigelow Road, and is bounded by the Bigelow Trail and Bear Wallow Road to the east and west. It is part of the greater 736 acre Spencer-Bigelow Vegetation Management Project.

As part of the forest's hazardous fuels reduction program, the district continues to prepare for landscape prescribed burning in various areas. Exact timing of burn operations and the amount of burning accomplished will be determined by weather, fuels conditions, and forecasted smoke dispersion.

A Fond Farewell to Racheal Biggs:

I would like to take this opportunity to give a warm goodbye to one of our fellow employees. Racheal Biggs is leaving us for the Pisgah National Forest in North Carolina after nearly 5 years of service to the Santa Catalina Ranger District. She has played a crucial role in the development of our Catalina-Rincon Firescape plan, and in the revision of the forest's Land and Resource Management Plan. Racheal has been a blessing to each and every one of us in the district and the Mount Lemmon community, and we all wish her the best of luck in her new assignment!

---

### SAVE THE DATE

Why? For our Halloween Party!

When? October 22, 2016

Where? MLCC at 5:30pm

Contact Jenni if you want to help. [Jlavram1@msn.com](mailto:Jlavram1@msn.com)

---



### FIREWISE INFORMATION

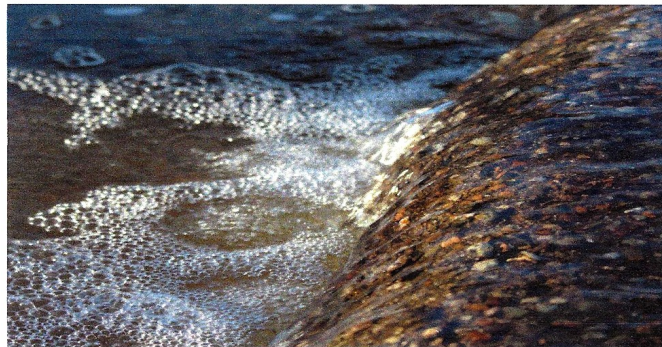
Susie Pearce & Glen Schager  
Firewise co-chairs

Notice all of the beautiful greenery on the mountain this summer? Grass and brush has grown like crazy from all of the monsoon rain. This is the same grass and brush that will be dry tinder and react like gasoline to a fire that gets started next year. Spend some time this fall getting rid of this material. Cut in down, bag it, and bring it up to the dropoff area by the fire station. As wet as the ground is right now, you can easily pull the greenery and possibly stop the spreading of the plant before it goes to seed so you have less to deal with next year. If you use plastic bags to transport the grass and brush, please empty the bags at the dropoff area so your slash is "fire ready". Burning plastic bags is a big no-no. Thank you for continuing to work at keeping down the fire danger in our community.



## Math on the Mountain The Geometry of Streams, Bubbles, and Chocolate Milk

by Christina Grossman



Mount Lemmon has been getting a lot of rain. With rain comes running streams. Running streams brings a great lesson in geometry...bubbles!

Take a walk and listen to the running water. Ask the kids to go find the water and see if there are any bubbles forming. Look at the bubbles and ask the kids to name the shapes they see. Do they see Spheres? Do they see Circles? What happens when the Spheres get pushed together, what other shapes do they form? Do they see Pentagons or Hexagons (five-sided or six-sided shapes)? How would you be able to recreate these shapes at home? How about with milk?

If it is raining outside or you need to take a snack break, give the kids some milk...chocolate milk if you have it. Get a straw and have them blow bubbles in the milk. What happens? Do Spheres take shape? What happens if they get pushed together? Do you see the same shapes as from the streams? Do you see a rounded triangle? Well, that is called a curvilinear triangle!

Take a look at the size of the shapes when looking at the bubbles in streams, or in the milk. Are all the bubbles the same size? What do you notice when big bubbles are pushed together? Do you notice a pattern in the bubble formations? These are great questions to ask, even if asking just one or two of them. It creates another way of looking at something that we might have taken for granted, especially up on the mountain. For instance, blowing bubbles and why are they always spherical? What a great "Something To Think About"!

### **Something To Think About:**

The next time you have some bubble solution, wands, and/or a bubble machine, ask this question: Does the bubble always come out as a sphere regardless of the shape of the bubble wand? Why do you think this happens?

Here is a website that has a brief description about that:  
<http://bubbles.org/html/questions/round.htm>

Remember, these small lessons are to help the child and ourselves to begin seeing and thinking about the world for what it is. The mathematics is there, it is free for everyone to learn, and there is an abundance of math to explore inside your home and outside, on the mountain, in the desert, and everywhere else!

For more pictures and to read the entire article online, go to September's post on [www.learningmathwithmom.com](http://www.learningmathwithmom.com). A special Thank You to Patty Thomas for having the bubble machine out for the July 4th event, as it is one of the pictures I used for the online article.

## Sweet Pea Finds Love at Ski Valley

by Lorri Hans



The gang had spent the night under the deck at the Iron Door and hadn't got much sleep due to the activity of the night animals. Sweet Pea had no idea there were so many nocturnal animals until now. Rufus asked if the gang wanted to head over to the Motherlode and to the Miners Sweet Tooth to check it out. They all said yes, except for Sweet Pea. Thomas spun his wobbly head around in shock and said, "Sweet Pea! How could you say no to this adventure?"

What no one knew was during the night while they were sleeping, Sweet Pea wasn't asleep. She was busy checking out the night life and meeting new and exciting friends. One friend in particular. Sweet Pea was playing in the wood pile when she came face to face with a young squirrel named Sammy. Oh she thought Sammy was so handsome! He had lived his whole life at Ski Valley and told Sweet Pea of his dreams to move away. He had heard of many places on the mountain where a squirrel could make his mark, build a home, and start a life of his own. Sammy dreamed of the day he would say farewell to his family and start one of his own. Secretly Sweet Pea had a very similar dream. So there she sat under the stars listening to this young man and his passion for adventure. She sat with her chin rested in her hands and gazed at Sammy, completely wrapped up in his words. Before the night had ended, a romance had bloomed between the two young squirrels. So while the gang went to get fudge, Sweet Pea went to meet up with Sammy and to make their plans to move away together.

Rufus, Thomas, and Charlie were not interested in any romance so they took off to find goodies. A Stellar Blue Jay sat in one of the Aspen trees along the way and seemed to squawk a warning call but none of them spoke Stellar so they just kept going. Just as they approached the gate to enter the ski side, Roxanne came swooping in and yelled, "Wait!" They all came to a sudden stop at her warning. She landed and said, "There is an old cat that lives here so you must be careful of not only being caught by people but also to not be caught by the cat." Since none of them even knew what a cat was, they weren't too concerned. As they rounded the gate and started up the wooden stairs they spotted something white with grey spots on it. The animal was laying in the flowers with just its nose poking out and appeared to be asleep. "What is that?", asked Thomas. Charlie didn't know but they decided that must be a cat and they snuck around it. They saw the door open at the Miners Sweet Tooth so they popped inside to get a look around. The smell of sugar hit their noses first thing. When they looked up they saw a counter with so many kinds of fudge, lollipops, and many kinds of gummy candies. Now the problem was, how would they be able to get some with it being so high up. Charlie jumped on Thomas's back and climbed all the way to the tip of his head. Thomas's head was bobbing around from right to left with Charlie barely hanging on. "Stop moving Thomas!", screamed Charlie. Finally Charlie was able to get his balance enough to reach out and he grabbed a candy stick at the same moment that he fell off of Thomas's head. The two grabbed their treasure and took off running. They ran the wrong way and ended up inside the Motherlode! They looked around at all of the gifts and forgot all about their candy. Now Thomas is a pretty big turkey so it wasn't long before they were spotted and chased out with a broom. Charlie was able to grab their candy just as they made their escape to the door. All of the noise had awoke the cat so as they ran away they learned what a cat was and how he had almost had them for dinner. When they went to look for Sweet Pea all they found was a

note saying she had fallen in love with a squirrel named Sammy and they would be moving away to start a family of their own. The 3 gang members were sad to have not been able to say good bye to their dear friend who had shared so many adventures with them but they were happy she had found her true love. They vowed to find out where she had moved and go to visit with their own families one day...





**Mount Lemmon Listserv**

Receive information from the Mount Lemmon community by signing up on the **Mount Lemmon Listserv**. Send an email to the listserv at [Announcements@mtlemmonhoa.org](mailto:Announcements@mtlemmonhoa.org) with your name and email address. We will sign you up and you will receive instructions on how to use the listserv.

**Important Numbers:**

Road Conditions 547-7510  
Post Office 576-1427  
Trico Electric 744-2944  
Water District 576-1538  
Amerigas 887-7120  
Arizona Propane 750-9116



PROUDLY SERVING ARIZONA FOR 42 YEARS

**Arizona Propane**

GAS PRODUCTS SALES &amp; SERVICE

- ✓ FAMILY OWNED
- ✓ COMPETITIVE PRICING
- ✓ NO HIDDEN FEES
- ✓ UNBEATABLE SERVICE
- ✓ RV COMPATIBLE
- ✓ RESIDENTIAL & COMMERCIAL

**520-750-9116****APRILK@ARIZONAPROPANE.COM**

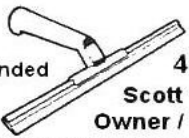
ENJOY A  
MOUNTAIN  
OF SAVINGS!

COMMERCIAL SALES

TIM 520-444-2576

**TIM@ARIZONAPROPANE.COM****TRUE LOVE WINDOW CLEANING**

(formerly CRYSTAL VISION)

Professional  
and FriendlyLicensed, Bonded  
and Insured**(520)****465-7195****Scott Truelove**  
Owner / Operator[www.truelovewindowcleaning.com](http://www.truelovewindowcleaning.com)**M. C. Harmon Construction, LLC**  
General Contractor**520-576-1546**

Building on Mt. Lemmon since 1979

Specializing in Custom Log Cabins

General	Plumbing	Electrical	Roofing
ROC 219566	ROC 221184	ROC 221185	ROC 221117

Matthew C. Harmon    Christopher J. Harmon

**Mount Lemmon Community Center**

The Mount Lemmon Community Center (MLCC) is part of Pima County's Natural Resources Parks Recreation (NRPR) department. The Mount Lemmon Community Center, Inc. is organized exclusively for charitable, social and educational purposes. The facility is dependent upon local volunteers to staff and support the visitor's center. Our mission is to welcome all who visit the facility and promote Summerhaven, Mount Lemmon and Pima County Arizona.

Reservations to use the Community Center can be made by calling Kelly Cheeseman at the Pima County Parks and Recreation phone number: 520.877.6155 or E-mail [Kelly.Cheeseman@pima.gov](mailto:Kelly.Cheeseman@pima.gov)

**ATTENTION ECHOES ADVERTISERS**

Starting in March 2016, we will be sending bills out again to all advertisers. Please remit payment as soon as possible to insure your ad will run consecutively.

(520) 576-1333  
(520) 576-1300 PHONE/FAX**MOUNT LEMMON REALTY, INC.****ROBERT ZIMMERMAN**  
Broker  
[bobzim@mindspring.com](mailto:bobzim@mindspring.com)**P.O. BOX 1**  
**MT. LEMMON, AZ 85619-0751**  
[MtLemmonRealty.com](http://MtLemmonRealty.com)

Advertise here

The Inns  
at EL  
RANCHO  
MERLITA

(520) 495-0071

[www.RanchoMerlita.com](http://www.RanchoMerlita.com)

1924 N Corte El Rancho Merlita, Tucson, AZ 85715

**GRIFFITH BUILDING**  
**OVER 30 YRS EXPERIENCE**  
**DESIGNING - BUILDING**  
**REMODELING AND REPAIRING**  
**VACATION HOMES & CABINS**  
**GARY 256-9816 LIC # 062647**



On Mt. Lemmon & in Tucson  
520.906.5985  
[s.pearce@comcast.net](mailto:s.pearce@comcast.net)

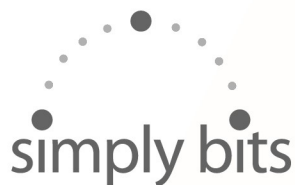
Susan (Susie)  
Pearce

Pilates Instructor  
Body Conditioning &  
Structural Alignment  
*Ron Fletcher Method*

**THE BUILT ENVIRONMENT**  
**ARCHITECTURE - PLANNING - DESIGN**  
Cabins - Custom Homes - Additions - Remodels

**MATT HAMILTON**  
OWNER ARCHITECT

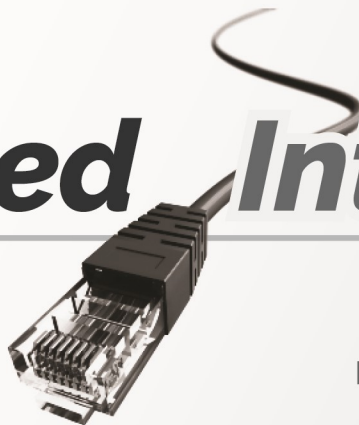
Free Consultation  
[www.thebultenvironment.webs.com](http://www.thebultenvironment.webs.com)  
(520) 624 6129



**Residential Plans**  
Starting at **\$24.95**

# High Speed Internet

**Avoid the Seasonal Rush!**  
Schedule Your  
Installation Today



**For more information**

**Call 520.547.7445**

or email [Lemmon@simplybits.com](mailto:Lemmon@simplybits.com)

5225 N. Sabino Canyon Rd, Tucson, AZ 85750

[www.simplybits.com](http://www.simplybits.com)

## Newspaper Delivery

Jenni Avram will provide the Sunday paper for residents at a price of \$2.50, payable in advance. Please contact Jenni at Mount Lemmon Realty to place your order 576-1333. Delivery will be by 11:30 on Sunday mornings at Mount Lemmon Realty.

## Restaurant Hours

### The Cookie Cabin

Monday thru Friday 10:00 - 5:00 PM  
Saturday and Sunday 10:00 - 5:00 PM

### The Iron Door

Monday, Thursday & Friday  
10:30 AM - 4:30 PM  
Saturday & Sunday  
9:00 AM - 5 PM

Breakfast served from 9AM-11AM  
Saturday and Sunday  
(Free Sky Ride with breakfast)

### The Grubstake

10:30 AM - 4 PM (weekends only)

### Sawmill Run

Monday-Thursday 10:30 AM - 5:00 PM  
Friday 10:30AM - 8:00PM  
Saturday 9:00 AM - 8:00 PM  
Sunday 9:00 AM - 5:00 PM  
Breakfast served from 9AM-11AM  
Saturday and Sunday

## \*\*Just Call 911\*\*

Becoming friends with our local firemen, EMT's, and law enforcement officers is bound to happen when we see them so often. It has become second nature to just call them directly instead of using the 911 services. It is very important to their budgets that we utilize the 911 dispatch and not call directly to the firehouse or our sheriff's cell phones. If we don't go through the proper channels, the agency doesn't get credit for the service they have performed. We ask that if you need medical attention, CALL 911. If you are in need of law enforcement, CALL 911. If you see a fire, CALL 911. It will benefit us all in the long run!



## MLHOA

The Mount Lemmon Homeowner's Association (MLHOA) was formed in 1969 to protect the welfare of the Mount Lemmon community and to be involved in all aspects of its improvement. The concerns of the organization are not limited to private property owners. Full membership with voting rights is accorded to private owners and leased land holders upon payment of yearly dues. Being organized, having a legal fund and having active **LOCAL** voice participation enables the Association to accomplish most of its goals. Pima County has said the MLHOA is the strongest and most respected homeowner's organization in the entire county. Dues are \$35 per year payable in February. Renters and Friends of the Mountain may obtain membership for \$35 a year. The Annual Dinner and Meeting is held each year on the first Tuesday after taxes. To join the Mount Lemmon Homeowner's Association, send a check to Box 699, Mount Lemmon, AZ 85619.

The most visible product of the MLHOA is the **ECHOES**, a newsletter published ten times a year. The Association organizes social events such as potlucks, pancake breakfasts, ice cream socials and raffles, enabling owners to mingle. Members of the Board are: Mike Stanley, president; Bonnie Lohman, vice-president; Linda Currin, treasurer; Mickie Gelsinger, secretary; Carrie Reitz, Event coordinator; John Mulay; Pete Krauss; Debbie Fagan; Glen Schager; Mike Bernstein; Tom Thomas, Bill Piatkiewicz; Jenni Avram; Sally Crum and Jerry Taylor.

Advertising in the Echoes is \$10 per issue for a proportional business card and \$50 per issue for a 1/4 page ad.

Echoes Editor: Lorri Hans (mtlemmonpielady@gmail.com)

<p>Misc Surplus Construction Material Available, FREE or very Cheap</p> <p>Assorted concrete masonry block, As- sorted "faux" stone veneer, cedar stakes, 1x6 "headboard" T&amp;G pine</p> <p>All materials are on the mountain Call Dennis Cozzetti at (520) 665-1648</p>	<p><i>The Living Rainbow, Inc</i></p> <p>P.O. Box 753 Mt. Lemmon, AZ 85619 (520) 576-1519 <a href="mailto:rainbowz@mindspring.com">rainbowz@mindspring.com</a> fax (520) 298-4770 Debbie Fagan</p> <p><i>Windchimes and Gifts since 1979</i> Celebrating our 35+ year in business</p>	<p>dennis cozzetti cozzetti construction inc. 520 665-1648 <a href="mailto:dennis@cozzetticonstruction.com">dennis@cozzetticonstruction.com</a></p> 
<p>Steve Littler</p>  <p><b>RANCHO LINDA VISTA</b> ARIZONA'S OLDEST GUEST RANCH ORACLE, ARIZONA</p> <p>Amy Buttery</p>	<p>P.O. Box # 32683 Tucson, AZ 85751</p> <p>Estab.  1984</p> <p>690-0808</p> <p>"Your Dependable Truckers of Tucson"</p> <p><a href="http://www.deserttrucking.com">www.deserttrucking.com</a></p> <p>John "J.J." Johnson Cell (520) 449-8800 Fax (520) 690-0011</p> <p>Transfers Super 16 &amp; 18 Semi's &amp; Bells .10 &amp; 12 Wheel Dumps</p>	<p style="text-align: center; font-size: 2em;">Advertise here</p>
<p><b>Elegant Excess</b></p> <p>Specializing in Beaded Badge Holders for Nurses, Teachers etc.</p> <p>By Carrie Reitz Phone 520-404-6772 See at: <a href="http://elegantexcess.com">elegantexcess.com</a></p>	<p style="text-align: center; font-size: 2em;">Advertise here</p>	<p><b>Sky Island Construction</b> BUILDING ON MT. LEMMON</p> <p>GREG FERGUSON - PRESIDENT Office: 471.6322 Fax: 751.7918 Lic# 163522</p> <p><a href="mailto:SKYISLANDCABINS@AOL.COM">SKYISLANDCABINS@AOL.COM</a> LICENSED, BONDED, INSURED</p>
<p>(520) 576-1333 (520) 576-1334 Res (520) 576-1300 PHONE/FAX</p> <p style="text-align: center;"></p> <p style="text-align: center;"><b>MOUNT LEMMON REALTY, INC.</b></p> <p>FRANCES ZIMMERMAN Sales Assoc./Property Mngt.</p> <p style="text-align: right;">P.O. BOX 1 Mt. Lemmon, AZ 85619-0751</p>	<p><b>George R. Reitz</b> Realtor® Multi Million Dollar Producer</p>  <p>Home/Office: (520) 722-1265 Cell Phone: (520) 444-1439 Fax: (520) 303-4975 <a href="mailto:greitz2@cox.net">greitz2@cox.net</a></p> <p><b>Real Estate</b> Marketing Professionals of Tucson</p> <p>7481 E. Tanque Verde Rd., Tucson, AZ 85715</p>	<p>(520) 576-1333 (520) 576-1300 PHONE/FAX (520) 861-0161 Cell</p> <p style="text-align: center;"></p> <p style="text-align: center;"><b>MOUNT LEMMON REALTY, INC.</b></p> <p>JENNIFER L. AVRAM Sales Assoc./Property Mngt <a href="mailto:jennimir@mindspring.com">jennimir@mindspring.com</a></p> <p style="text-align: right;">P.O. BOX 1 Mt. Lemmon, AZ 85619 <a href="http://mtlemmonrealty.com">mtlemmonrealty.com</a></p>
<p><b>Cabin cleaning made easy</b></p> <p>Next day, same day service available Open/close cleaning jobs bid on site Free estimates, flexible hours</p> <p> <b>Debbie Weatherly</b> 520-203-3740 Email: <a href="mailto:Debbie.weatherly@gmail.com">Debbie.weatherly@gmail.com</a></p> <p></p>	<p style="text-align: center;"><b>STOMPIN GROUNDS</b> <b>COFFEE &amp; KETTLE KORN</b></p> <p>Jeanne Mayer (520) 975-6038 <a href="mailto:Daymayer@yahoo.com">Daymayer@yahoo.com</a></p> <p style="text-align: right;">LeRoy Day (520) 975-6024</p>	<p><b>EL RANCHO ENCANTO</b> ASSISTED LIVING EXTRAORDINARY HOMES, SUPERIOR CARE</p> <p style="text-align: center;"><b>Pam Haskell</b></p> <p>Phone: 520-885-0004 Fax: 520-885-7077 Cell: 520-245-8292</p> <p>5705 &amp; 5803 E Ft. Lowell Tucson, AZ 85712</p> <p><a href="mailto:pamhaskell@elranchocanto.com">pamhaskell@elranchocanto.com</a> <a href="http://www.elranchocanto.com">www.elranchocanto.com</a></p>

## Nextdoor is Gaining Momentum!

by Mike Bernstein

As I am writing this, we have 70 neighbors registered and verified in Summerhaven. We are off to a great start thanks to everyone who registered and invited their neighbors. We are working hard to not miss anyone. So far we have recovered a missing dog, helped surplus furniture find a new home, promoted a community dinner to support our Fire Department, spread the word about parties, started to build special interest groups, created some permanent reference materials, and we are just getting going! Remember, there is no one in charge of this effort. It's just a bunch of neighbors, like yourself, working hard to facilitate better communications for our mountain neighborhood.

If you have heard about the Nextdoor initiative but have not yet signed up, please consider registering. Several people have asked me questions about the program and I will try to answer the most common ones here:

Q: What about other neighborhoods besides Summerhaven; Greater Soldiers Camp Association, Bear Wallow, Fern Ridge, etc?

A: We are working with Nextdoor to launch these neighborhoods online. It will take a little time because many of the cabins are on leased land and not registered as parcels on the Pima County map since they are on federal land. We are currently working with a few neighbors from these areas to get things going. Stay tuned and check back in the next month's Echoes for updates. Everyone will be a part of the larger Mount Lemmon Community, but able to target postings just for their neighborhood as appropriate or the entire Mount Lemmon Community.

Q: What about Privacy? I didn't register because I don't want people to have my email address.

A: One of the really nice things about Nextdoor is that you will be able to interact with everyone and not have to give out your email address, everyone is just referenced by their name.

Q: I get too much E-Mail as it is. I don't want more; can I adjust how much email I get after signing up?

A: Yes! Each neighbor has complete control of both types and frequency of the emails received. If you want to be up-to-the-second about what's going on, there is a setting for that. If you prefer a recap at the end of the day, there is a setting for that. If you don't want any email and just want to check the website at your leisure, there's a setting for that. Nextdoor is very customizable.

Q: How do I get verified since I don't receive mail or bills at our cabin address?

A: There is a way that Doug or I can "Verify" you manually. Think of "Verify" like someone is vouching for you, that you do indeed live in the neighborhood. This is done to ensure that our online information stays private within our neighborhood and not spread worldwide like Facebook.

If you'd like to learn more about the program and get more questions answered, Doug and I will be scheduling a workshop sometime in September. You can even bring your laptop or mobile device to get hands on training. Keep an eye on the Nextdoor Events Calendar for official date. Cost is \$0.00 for workshop.

So, if you have not registered and I have addressed your concerns, please use your internet web browser and head over to <http://BIT.LY/SummerhavenAccess> and get signed up now to stay current on what's going on. For additional questions send me a note at [MikeB@SimplyBits.com](mailto:MikeB@SimplyBits.com) or private message Mike Bernstein or Doug Mance within Nextdoor and we will do our best to answer them. Who knows, your question might even be in the next Q&A!

Remember, all content on this system is neighbor generated. Get involved, give it a try, and like most things in life, it will only be...what we make it.

If you notice your neighbor is missing from the list, invite them. It's the neighborly thing to do!



## “Guess Who This Is” Contest– Sixth Photo

For those of you who missed last month’s Echoes, this is the sixth photo in our guess who game. Interest has seemed to decrease so this will be the last time to get in the game. I will announce the overall winners in next months Echoes. All you need to do is send an email to me at [mtlemmonpielady@gmail.com](mailto:mtlemmonpielady@gmail.com) with your guess.

Local businesses will be donating the prizes for our contest and are listed below:

First Place: Gift certificate for \$50 at the Sawmill Run Restaurant

Second Place: Gift Card for \$20 from Ski Valley (can be used at restaurant, gift shop, or candy shop)



Mike Anderson last month’s secret local

Here is last month’s secret local revealed and the new guess who picture.

Winners of August are:

1st-Linda Mulay

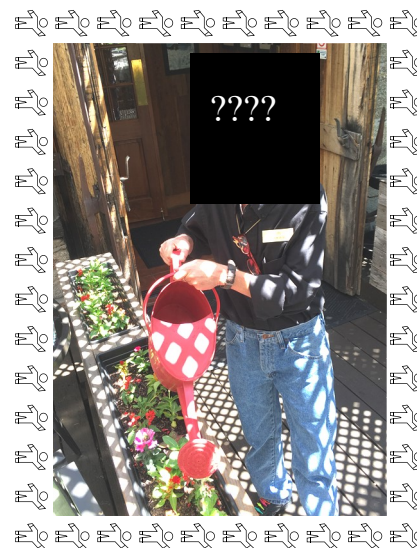
2nd-Susan Anderson

3rd-

4th-

5th-

Get your answers in as fast as you can!!



September’s secret local

## Fragrant Snakeroot (*Ageratina herbacea*)

by Frank Rose

The summer rains are bringing a new and glorious display of wildflowers. Trails like Oracle Ridge or Butterfly become so crowded with the new growth that it is sometimes hard to make your way through the thousands of plants that enrich the view. One of my favorites is Fragrant Snakeroot (*Ageratina herbacea*). The Greek name, *Ageratina*, means “does not grow old” referring to the way the flowers persist well into the fall. Lots of white stamens project out from each flower head, giving the plant a fuzzy appearance. Some of these plants can be two or even three feet high and even wider, and a hillside can have masses of them.



**Mount Lemmon Homeowner's Assoc.  
P.O. Box 699  
Mt. Lemmon, AZ 85619**

PRST STD  
US POSTAGE  
PAID  
TUCSON AZ  
PERMIT #129

## Parting Shots

The Zombies are coming!

