

The Mt. Lemmon Echoes

“No Regrets! We’re Home!”

Two strong personalities. Two enthusiastic partners who make their successful businesses work. And they LOVE everything about Mt. Lemmon. Mark and Susan Shomo’s comfortable cabin and inviting deck welcome them home from their Tucson Palo Verde Signs’ daytime endeavor, and relaxation begins the moment their vehicles head up the Catalina Highway.

Mark Shomo transplanted from West Virginia, “Back East Hillbilly Country,” while Susan came from Pittsburgh, PA, thinking heading up Mt. Lemmon was “going to the woods!” The two have been happily married for 25 years, and plan to live in Summerhaven forever. They work well together, and in spite of strong personalities, complement each other’s strengths.

Shomo grew up always wanting to own and operate his own business. Being Type A means he has confidence in his abilities; thus the successful Palo Verde Signs. From paper routes to mowing lawns, good work ethic and drive helped lead to bigger and better opportunities. Before billboards were outlawed in Tucson, Shomo established Palo Verde Signs, providing businesses with billboards and exposure throughout the community. This later morphed into the service sign business it’s known as today. Mark handles the hiring, firing, management of the crews and working with customers and companies that manufacture the large signs seen throughout the Tucson area. Susan takes care of the office, payroll and financial aspects of Palo Verde Signs. This partnership works well and makes for a happy relationship!

Six months before the Aspen Fire of 2003, the Shomos, dreaming of owning a cabin on Mt. Lemmon, found a perfect little place behind the Cookie Cabin. Closing the deal Christmas Eve day, they began making it comfortable and their own, hoping to move in that July, only to have those dreams turn to



ashes as fire swept through the village. Right away couldn’t be soon enough to begin rebuilding! Tucson’s summers and the desire to make Mt. Lemmon “home,” so their positive attitude made it happen.

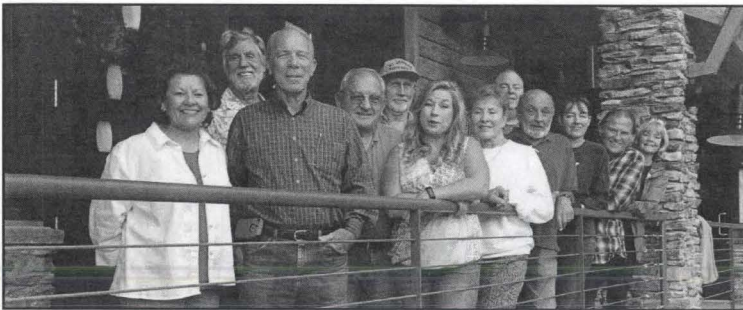
Their current home is more spacious and comfortable than the original 640 square foot purchase, and Mark and Susan decided to add two guest suites on the lower level, Mt. Lemmon Guest Room Rentals! Each suite consists of a tastefully furnished bedroom, bath and small kitchen area with fridge, microwave, sink, dishes and utensils. A lovely private deck, shaded by a huge apple tree loaded with fruit, overlooks the village, and includes a gas grill and seating areas. Susan manages the accommodations and rentals. Ask Mark and Susan to share their “E Harmony” matchmaking story. It’s a classic and makes their eyes sparkle!

Hobbies? Relaxation? “We’re HOME!” Susan’s green thumb is evidenced by amazing orchid plants gracing her kitchen window. And Mark has constructed a great greenhouse off their deck, south facing and temperature controlled, already with tomato and basil plants and room for many more. They plan to have a variety of vegetables all year round.

Mark and Susan Shomo love living on Mt. Lemmon and look forward to more people doing the same. They enjoy all the people up there, and there’s not a dull moment to find. Perhaps another business on the lot they recently purchased? And then some day... retirement in their special paradise.

Mt. Lemmon Homeowner's Association

by Michael Stanley, president



Mt. Lemmon Homeowner's Association Board

I wish all of you a happy fall season. The mountain feels the change is coming and is ready for a great autumn.

This last month was a busy one. As you read your copy of the Echoes you will find several articles about our fabulous Pancake Breakfast. The proceeds of this event will benefit the Fire District and help to purchase a thermal imager.

Speaking of thermal, we have a great article on thermal expansion in your water system. It's also nice to see our Soldiers Camp writers have continued to keep all of us updated on their area. From 9/11, to voting, to trails, to de-skunking, interesting articles and perspectives shared by our locals add so much to this edition of the Echoes. As a reminder, anyone can email information or an article of community interest to our editors.

Participation in HOA events is open to all our members. Our association is reaching out to mountain property owners to join and be a part of the Mt. Lemmon Homeowners Association. For just \$35, members receive these Echoes, providing a wide range of information for the mountain community.

Support the MLFD and enjoy a fabulous day of golf with great prizes on November 6th! Thank You.



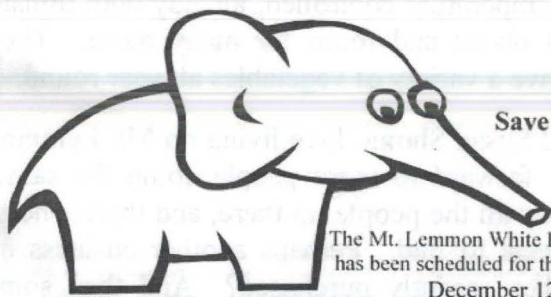
October 2015

- 11th - **Loma Sabino HOA**
Annual HOA Meeting - MLCC - Noon for lunch
- 17th - **MLWD** -
Board Meeting 8 AM - District Offices
- **MLHOA** -
Board Meeting - 10 AM - MLCC
- **MLWC**
General Meeting 1 PM - MLCC
- 17th - **Carol Bender and UofA Students**
Adventures & Research Abroad
2:30 PM - MLCC
- 27th - **Full Moon**
- 31st - **Halloween**

Thank You Thank You Thank You!!

Thanks and kudos to Lorri and Deb for their efforts in this year's **Dust 'n Dine!** Dennis and Pam Winsten won the drawing held at the annual Pancake Breakfast at the Mt. Lemmon Fire Station. Over \$1,000 was realized by this event.

The **Pancake Breakfast** was another huge success, also bringing in over \$1,000! The MLFD is very close to purchasing the much-needed thermal imager! Thanks again to everyone who participated!



Save the Date !

The Mt. Lemmon White Elephant Party
has been scheduled for the evening of
December 12th

Watch for more information soon!

September 11th – A Good Reminder of the Sacrifices Made by Our First Responders.

by Fire Chief Randy Ogden

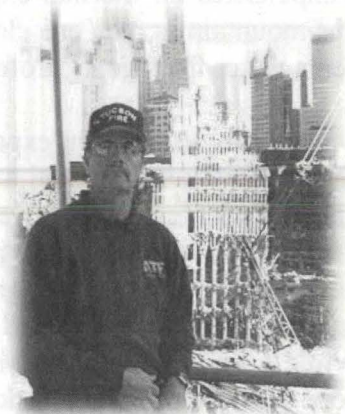
On September 11, 2001, at 8:46 AM eastern time, suicide hijackers crashed American Airlines Flight 11 into the North Tower of the World Trade Center. Seventeen minutes later, at 9:03 AM, a second team of hijackers crashed United Airlines Flight 175 into the South Tower. Hundreds of firefighters responded to rescue victims and evacuate the towers. At 9:59 AM the South Tower collapsed. This was followed by the collapse of the North Tower at 10:28 AM. In the aftermath, 343 firefighters lay dead. This tragedy represents the greatest loss of life in a single incident the fire service has ever experienced.

Every day, firefighters and police officers put their lives on the line to save total strangers. There are few professions tasked with protecting their community in such a manner. Although we do everything possible to ensure that our firefighters and police officers go home safely each day, the dangers are ever present

I spent a week in New York City following that tragic day. What I saw truly still amazes me. I saw firefighters from all over the country working side by side searching the “pile” for bodies and personal effects of people who perished. That day rewrote how first responders do business. Never before had we worried that we, as firefighters, would be the target of terrorists. We now incorporate that thought process into emergency response plans and are considered on all working emergency scenes.

I spent 5 days with a FDNY firefighter who had lost his brother (a firefighter from FDNY Fire Station 10) in the collapse of the South Tower. It was a testimony of professionalism that he was even there working and still putting himself in harm's way after such a tragic loss. I saw greatness and compassion during that week. It was the best and the worst experience of my professional life. I was humbled to be part of the fire service – the greatest career in the world. I think about the sacrifices that the FDNY firefighters and the firefighters' families made that day and all of the lives lost each year fighting fires – both structural and wildland. The fire service averages 100 firefighter fatalities annually.

Every day, the MLFD firefighters show me that same dedication and drive to care for their community. The mountain is blessed to have these guys keeping us safe. Next time you get a chance, tell them “Thanks.” It will mean the world to them that you noticed.



Monsoon and Predictions of Winter Precipitation on the Santa Catalina Ranger District

by Rachael Biggs, USFS

The 2015 monsoon brought inconsistent thunderstorm activity to the Santa Catalina Ranger District. Despite substantial breaks in monsoon activity, overall precipitation averaged about 110 to 200% of normal in August. Mt. Lemmon received about 24.5 inches of rainfall from June through September. In contrast, Tucson was drier than the mountains, receiving about 75 to 100% of normal rainfall. The rainfall is evident in the abundance of surface water, recovering trees and flush of late-season plants.

Predictions of a strong El Niño are widespread for the 2015-2016 winter season. Below average temperatures and above average precipitation is forecast for southeastern Arizona. Although the moisture is welcomed, fall and winter precipitation can result in an abundance of fine fuels, especially in lower elevations, leading to above normal fire potential in those areas for 2016.

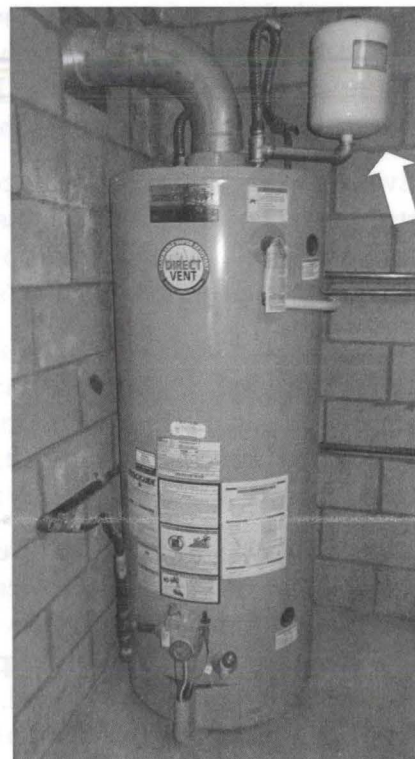
Do You Need a Water Expansion Tank?

by Paul McCarthy

I didn't have one. In fact I didn't know what one was or that I needed one! A water heater expansion tank compensates for thermal expansion which occurs in a closed water system in your cabin. The systems in our mountain homes are closed because on Mt. Lemmon, we all have a "backflow preventer" which prevents water from going from our side of the meter back into the distribution system.

I found the need for an expansion tank quite by accident. Noticing that occasionally when I opened a faucet, there would be an initial surge of water pressure that lasted just a few seconds, so I decided to investigate, thinking the problem was with the "pressure regulator" on my side of the water meter. I got a "pressure test gauge" and attached it to the hose bib. The pressure on the gauge registered close to what I had my pressure regulator set at. While I stood there scratching my head, the water heater which is near the hose bib just happened to kick on. In less than a minute, the pressure test gauge began steadily rising until it got up to over 100 psi, at which time I quickly opened a nearby faucet to relieve the excess pressure. The pressure would continue to rise as long as the water heater was heating and the faucet was closed. Since the pressure regulator for my home was set at between 40-50 psi, why was the pressure going so high?

Long story short, I talked with the pros at MLWD who explained what was happening and that I should have an expansion tank on my water heater to prevent the excess pressure and also to prevent damage to the water heater and pipes. A water heater expansion tank is usually either a 2 or 5 gallon capacity and is attached to the water heater. It contains a rubber bladder which absorbs the excess pressure. The tank is pressurized with a bicycle pump to a pressure equal to the pressure setting of the pressure regulator.



Adding the expansion tank to the water heater was an easy fix for a plumber. The tanks are available in town at most hardware and big box stores. You may start the process yourself by getting a pressure test gauge to check the pressure on your system. The pressure regulator in your water meter box should be set at below 80 psi and usually between 40-60 psi according to the experts. Check with Michael Stanley at the MLWD for more information 576-1538.

Back in the Good Ol' Days....

by Jenni Avram

Back in the good ol' days there was an Emporium, a cute little gift shop. So one day my brother and I went out and found a bunch of pretty mushrooms and went down to the Emporium and showed the guys who owned it. They were so excited and told us that for every mushroom we brought in they would give us a quarter. So we went out and found \$5.00 worth of mushrooms!! They gave us five singles, and when our mom came home, we were dancing around throwing the money in the air. When Mom (Fran) asked us how we made this money and we told her, she was not happy. Needless to say we didn't get to do that again!

The Soldier's Camp Monthly Bugle Mt. Lemmon Fire Taxation District – Soldier's Camp

by Chuck Huber

What is going on with regards to the "Fire Subscription" that some of the members of the Greater Soldier's Camp Association (GSCA) pay in our Pima County tax bill and what some of us pay "by subscription?"

At the recent MLHOA Pancake Breakfast, Chief Randy Ogden told me the Fire District lines were not drawn to encompass ALL of the cabins in the Soldier's Camp area, and therefore those outside of the "Fire District" are on a "subscription/separate billing" plan.

I was able to locate a Pima County GIS map that confirmed the Chief's explanation and showed four cabins on Fern Ridge, and several in Lower Soldier's that are outside of the fire district boundaries. It would be fascinating to determine if there is a survey mark, or monument of some type, at the top of Upper Soldier's Road, at the corner of the boundary (this marker would be just west of Cabin #8 – the GSCA has other maps that show a section boundary in the same area).

If you are computer literate, do a Google search on "Pima County GIS Maps." You can locate an on-line mapping tool that allows you to generate interesting maps of the area on your own. Zooming out to evaluate the Town of Summerhaven, this "random border selection" does not seem to be much of an issue; the Mt. Lemmon Fire District seems to properly encompass all the homes in the area.

I also recently fielded a question from a new Soldier's Camp cabin owner regarding "Forest Service plots/plats that were originally permitted, but have not been developed." If you look carefully at this map, (and compare it to other maps of GSCA existing cabins connected to the water system), there are a large number of sites. I put black dots on what appear to be designated plots where there are no cabins. I don't hold much hope that the Forest Service would ever let them be developed, but... stranger things have happened! Interesting stuff.

The sign of a beautiful person is that they always see beauty in others.

THANKS FOR CARING AWARD

The Mt. Lemmon Homeowner's Association honors

NICKIE RIO, JEANNE MAYER, and LEROY DAY

for their help with every aspect of the **PANCAKE BREAKFAST**. Without their help, the beverage service might have been a jumble, the pancake line would have slowed to a crawl, the bacon might have been a little cold, we would have been short a number of small tables and we'd still be looking for someone to help with any number of "could you please..." requests! A BIG "thank you" to all for stepping up and working through the morning.

Wanted... MLFD Fire Board Member

by Fire Chief, Randy Ogden

Dennis and Joyce Anderson are true friends of the mountain. Dennis accepted a Board position when the District was in desperate need of someone with business acumen and accounting skills to bring MLFD back on track and refocus on the mission of providing excellent fire and emergency medical service in a fiscally responsible manner. He was the chairman of the Mt. Lemmon Fire District Fire Board that hired me (and that doesn't make him a bad person!). He was instrumental in getting the fire district out of debt and into the black. He and Joyce are the driving force behind the success of the MLFD annual golf classics. (We are currently preparing for the 7th Annual Golf Classic on November 6th at Forty-Niner Country Club). Joyce always dazzled the fire board each month with her baking skills and treats. You can always win when you feed the firefighters.

How can we ever repay them for their hard work, dedication and passion for the Mt. Lemmon Fire District and the community? They have helped make the mountain safer for all of us to live in and enjoy. Dennis and Joyce will always be an integral part of the fire district. I have leaned heavily on Dennis over the past several years, and he has provided wise counsel and insight. Thank you for all you have done for me, the fire district and the mountain.

Chairman Anderson has decided to step away from the board in December to allow other community members to experience serving on the fire board. If you are interested, or know someone who would like an adventure of a lifetime, please send me a note to ogden@mlfdaz.org or an email to John Perchorowicz at jperchorowicz@mlfdaz.org. Andersons, we will miss having you on the Mt. Lemmon Fire Board. However, you are NOT exempt from golf tournament duty!



7th Annual MOUNT LEMMON FIRE GOLF CLASSIC BENEFITTING THE MT. LEMMON FIRE DISTRICT



Friday, November 6, 2015
FORTY NINER
COUNTRY CLUB
ESTATES

The Mt. Lemmon Fire District provides emergency medical services, rescue and fire protection to the residents of Mt. Lemmon.

We ALSO provide rescue and emergency services for the one and a half million mountain visitors annually. We are here for you while you are bicycling, hiking, climbing, riding your motorcycles, camping, or just enjoying the mild Mt. Lemmon weather.

Without MLFD, the closest emergency help is 60-90 minutes away!

Registration: 6:30am / Shotgun Start: 7:30am

Entry Fee: \$150 per player

Firefighters Entry Fee: \$100 per player

- Includes complimentary course drinks, lunch, quality entry gifts, and a chance at great prizes!

Scramble Format

Hole-In-One Contest!

**CHANCE TO WIN \$10,000!
GREAT RAFFLE PRIZES!!!**

To register and pay with check - print form @ mtlemmonfire.org.

For more information contact Jarrod Dorman - jdorman@mlfdaz.org.

Register online at mtlemmonfire.org



Mt. Lemmon FireWise Suggestions for You!

by Glen Schager/Susie Pearce

Been a really nice summer, and autumn is on its way. Some leaves are already beginning to turn a bit yellow. All of the grasses, flowers, and brush that grew up during this summer are beginning to drop their seeds.

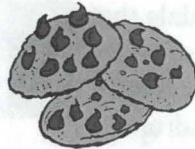
Enjoy the fall weather; get outside but don't just stand there. Make yourself useful and cut down that grass and brush. Bag up your cuttings and bring them to the burn area near the fire station. You may need to ask somebody at the station to open the gate to the burn area. Call MLFD at 576-1201 to let them know you're coming or make sure someone will be available to help you.

Lots of pine needles are going to start falling. Don't forget to get them out of your gutters, on your roof behind the chimney, and in the swales of the roof.

If you need help transporting your cuttings, give me a call at 465-6906

Fall and Winter Restaurant News

The **Cookie Cabin** introduces October's "Cookie of the Month," and features our Pumpkin Nut cookie with Halloween Sprinkles! Come in and enjoy one! The Cookie Cabin will be closed on Thanksgiving and Christmas.



The **Iron Door** announces Oktoberfest, held on the weekends of October 3rd and 4th and October 10th and 11th. Watch listserv announcements for details.



The **Sawmill Run Restaurant** is serving breakfast on Saturday and Sunday mornings from 9 to 11:30 AM, including specialties such as bread pudding French toast, smoked salmon bagels and chicken fried steak.

Trail Tails

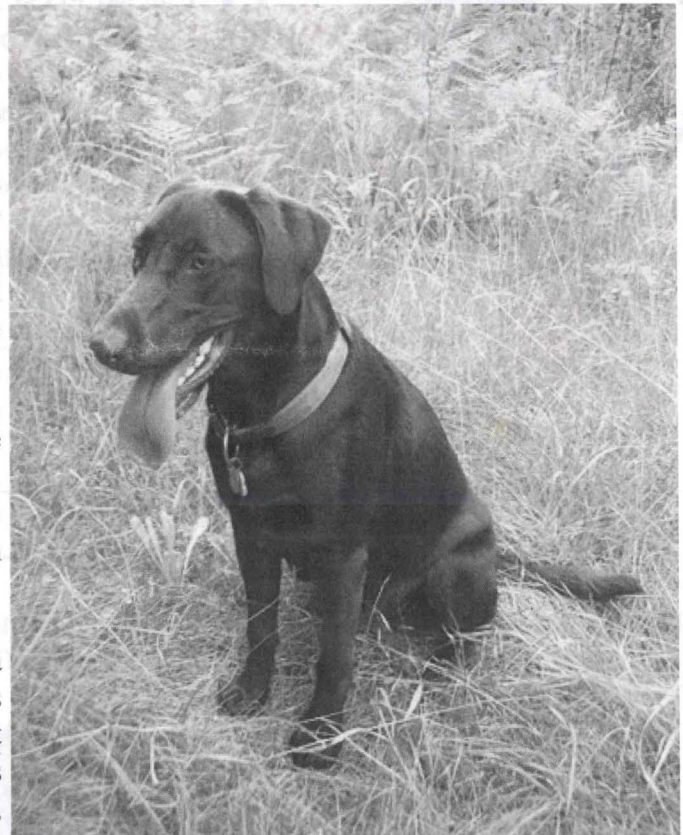
by Abby, Chocolate Lab

Among the best things on Mt Lemmon are the trails. They offer great sights, sounds, and smells and take me to the best swimming holes anywhere. Although my bipedal furless friend (BFF) prefers to walk, these trails are great for running (so many squirrels...so little time). One of our favorite excursions is Mint Spring (from Carter Canyon) to Aspen Trail (ending up in Marshall Gulch). We make it a complete loop by running to the trailheads from our cabin.

From Carter Canyon, the Mint Spring Trail climbs gently through an aspen grove with good views of the village. The trail contours around the shoulder of a low ridge before a slight descent through bracken fern to Mint Spring (about a mile from the trailhead). There is a small pool of fresh water at the spring, fully equipped with a blue enamel cup for those with opposable thumbs (I just lap up the water). Another $\frac{3}{4}$ mile gets us to the trail junction at Marshall Saddle.

Lots of choices at the junction: a sharp right takes us up to Radio Ridge and the top of Mt. Lemmon (back to Summerhaven via Aspen Draw and Turkey Run), straight ahead goes down into Wilderness of Rocks (long way around via either Lemmon Rock Trail or Lemmon Trail to top), gentle left is the Aspen Trail (very scenic route returning to Marshall Gulch), and sharp left goes directly down Marshall Gulch. While splashing in Marshall Gulch is always a good choice, my primal instinct tells me to look for squirrels today, so Aspen Trail it is. This trail contours around the mountain with some great views (and great running). After a couple miles, the trail drops into the Sabino Creek drainage before arriving at the Marshall Gulch picnic area.

This is a great three-season run/hike (tough in a snowy winter), with wildflowers in the spring, berries in summer, and beautiful fall colors. For bipedals that stay on the path, total trail distance is about four miles (Carter Canyon – Marshall Gulch via Aspen Trail), plus the distance back to your cabin. For quadrupeds that prefer lots of exploratory diversions, the distance is probably double that. Don't forget the snacks!



Newspaper Delivery

Jenni Avram will provide the Sunday paper for residents at a price of \$2.50, payable in advance. Please contact Jenni at Mt. Lemmon Realty to place your order 576-1333. Delivery will be by 11:30 on Sunday mornings at Mt. Lemmon Realty.

Fragrant Snakeroot??

by Pam Haskell

Frank Rose gives us *Ageratina herbacea* (Fragrant Snakeroot) as our flower of the month. The Genus name: *Ageratina*, comes from the Greek meaning "ageless," possibly because it keeps on blooming well into the fall. It is a beautiful shrub, growing as low as Windy Point, up to 8000' or higher. It has a feathery look because the flowers have little white projections. You can see this plant along roadsides or on high mountain trails.

Ageratina herbacea
Fragrant Snakeroot

Blooms: June to October

Elevation: 3,800'-8,650'

Habitat: Rocky slopes, outcrops, and canyons in desert grassland, oak woodland, pine oak woodland, and mixed conifer forest.

Flower: 3" cluster

Plant: 2 ½"

The white stigmas poking out from white flowers make for a very feathery look. This is one of the most abundant fall flowers.

A deciduous perennial subshrub.



. Photo courtesy of Frank Rose

The above information is an excerpt from
Mountain Wildflowers of Southern Arizona by Frank Rose

Please Help Solve the Mystery

by Phil and Kathleen Silvers, Carter Canyon

After the Aspen Fire in 2003, we drove to a nursery in the White Mountains that sells apple trees, wanting to replace those we lost in the fire. We brought two back, planted, watered, and fertilized them for six years. They began to produce!

Two years ago, we had a very nice crop and invited eight Rotary Youth Exchange students from around the world up for a two-night weekend stay (as we had previously done for 25 years), and promised them they would be able to pick apples. When we arrived with our students, the trees had been picked clean. Our students were really deflated. Animals, you suggest? We do not think so, after harvesting apples on this mountain for 37 years. We used to have bears who would take a few; we could see bear-claw marks on the trunks. Deer only take the low-hanging fruit, if any at all.

Last year, the thieves must have been otherwise occupied. We harvested two bushels of delicious apples. We had not invited exchange students for fear that the thieves would again spoil their fun.

This year, we had a smaller, but still nice crop, due to more tender loving care. However, in late August, before the apples were even ripe, the thieves returned and stripped all the trees. We ask you now, who would want to do this and would have the carrying capacity to harvest a couple bushels? It would not be our neighbors. It would likely not be the only authorized people on our property, those utility workers. Hikers' backpacks hold only so much capacity. Can you help solve the mystery?

.2015 Pima County \$815 Million Bond Proposal Information and Views

by Larry Waldron

Are you familiar with the November 3rd election bond issues, their benefits and their costs? This is a very large bond proposal. The Mt. Lemmon Woman's Club hosted a discussion on the 2015 Pima County \$815 million bond proposal at the community center on July 18th. Several bond representatives gave a positive view to all seven individual bonds. Unfortunately there was no one giving a counter point of view. It is important for voters to hear both the "for" and "against" to fully evaluate the effect of the seven bond proposals. Be sure to educate yourself and then VOTE!

The following links are included to help your study of these bond proposals.

This link provides detailed information about the Pima County bond proposals:

<http://webcms.pima.gov/cms/One.aspx?portalId=169&pageId=195314>

This link provides a "support" view for the bonds:

www.yesonpimacountybonds.com

This link provides an "against" view for the bonds:

<http://pimabondfacts.com>

. Mt. Lemmon Woman's Club Fall Wrap-up

by Linda Mulay, president

Jerry Taylor and his Bluegrass Band provided great entertainment for our members and their spouses on September 12th. Thank you to our gracious hosts, Dorothy and Henry Johnson, for such a beautiful setting and great weather. The potluck lunch was delicious.

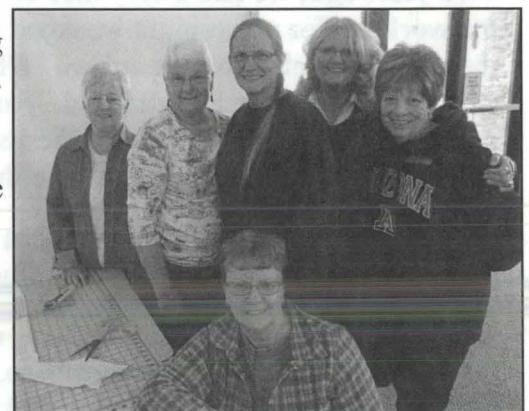
The MLCC was not available for our September meeting. Thank you to MLFD for allowing us to have our meeting and speaker from Game and Fish there.

Our September Done-In-A-Day project was "Tee Up For Tots/Courtney's Courage," supporting families of pediatric cancer patients. We collected gift cards for groceries, gas and clothing.

The Chemo Cap sewing group made another 120+ caps during August and September. This group is finished for the year. Thank you to all who helped with this worthwhile project.

Bunko is done for the year, but plans are being finalized for the December Holiday Brunch!

The next meeting is October 17th, 1:00 PM at MLCC. At 2:30 PM, our speaker will be Carol Bender, who will share her experiences with her "Undergraduate Researchers Czeching Out Science and Culture from Argentina to Czech and Beyond" trip this past summer. Come and hear about the program and meet some of the students who joined her on this amazing adventure.



Sewing Chemo Caps with (L to R) Mary Hunter, Linda Mulay, Mary Lou Piatkiewicz, Tina Hanks, Linda Kent, and Luann Waldron in front



Hi to All My Mt. Lemmon Dog Friends and My Dog-loving Human Friends!

by Maddie Hinsch

I've been coming up to Mt. Lemmon since I was 8 weeks old. I LOVE Mt. Lemmon! It's a dog's paradise! So many good smells, grass, mud when it rains, and CRITTERS to chase! I'm an English Cream Golden Retriever, and I love to chase lizards in Tucson and chipmunks, turkeys, deer and squirrels on Mt. Lemmon.

A few weeks ago, I chased an animal that I never saw before. Furry, white and black, low to the ground and cute! Mommy left me alone, and it got dark. When she returned and let me out to tinkle, I saw it! Of course, the chase was on! Suddenly the little furry guy just STOPPED and stared at me. Guess what? YECCH! I got sprayed with the most gross, horrible, smelly stuff ever! I tried getting that smell off by rolling around and rubbing my fur in the grass, but it didn't work. Oops, I had been SKUNKED! Good thing for me, Mommy had the right stuff to get out most of the terrible smell from my fur, her clothes and off the deck, too. I couldn't go back in the cabin until I was clean and dry, but Mommy sure was soaked! Two hours!!

If this awful thing happens to you, tell Mommy and Daddy to have:

- 1 quart of 3% hydrogen peroxide
- ¼ cup of baking soda (NOT baking powder)
- 1 tablespoon of dish soap (Ivory Liquid or Soft Soap works best)
- Good sized towels for drying you.

Be outdoors, on a non-porous surface! Mix ingredients in a bucket and pour cupfuls of the solution over affected areas and rub and massage the solution deep into your coat. (Don't get it in eyes. If you have been sprayed in the eyes, they'll look red, and you will need to rinse them with clear running water.) Leave the solution on for 10-15 minutes. Then rinse off and repeat if you still stink. Then, shampoo with regular dog shampoo, rinse and dry thoroughly.

If possible, don't get wet for a while after you've been de-skunked because moisture seems to reactivate and may worsen the odor. (Do not store any leftover mixture. It can explode if left in a container, so just pour it out.)



Can't believe this happened to me AGAIN one week later! This time my daddy was there! (I think Mommy seemed kind of happy about Daddy being there this time!) I hope that little furry guy doesn't come around again at dawn or at dusk, 'cause Daddy says my "in-stinks make it really hard for me to resist chasing the little buggers." (At least that's what I think he said!) For now, we have a bunch of mothballs and a light on under the cabin deck at night, and when I go outside at dusk or dawn to tinkle, I have to be on a leash!

Mt. Lemmon Listserv

Receive information from the Mt. Lemmon community by signing up on the **Mt. Lemmon Listserv**. Send an email to the listserv at Announcements@mtlemmonhoa.org with your name and email address. We will sign you up and you will receive instructions on how to use the listserv.

Important Numbers:

Road Conditions 547-7510
Post Office 576-1427
Trico Electric 744-2944
Water District 576-1538
Amerigas 887-7120
Arizona Propane 750-9116



PROUDLY SERVING ARIZONA FOR 42 YEARS

Arizona Propane

GAS PRODUCTS SALES & SERVICE

- ✓ FAMILY OWNED
- ✓ COMPETITIVE PRICING
- ✓ NO HIDDEN FEES
- ✓ UNBEATABLE SERVICE
- ✓ RV COMPATIBLE
- ✓ RESIDENTIAL & COMMERCIAL

520-750-9116**APRILK@ARIZONAPROPANE.COM**

ENJOY A
MOUNTAIN
OF SAVINGS!

COMMERCIAL SALES

TIM 520-444-2576

TIM@ARIZONAPROPANE.COM

(520) 225-0468 Sean
Thischefrocks@gmail.com



(520) 843-1164 Lorri

Mtlemonpielady@gmail.com

M. C. Harmon Construction, LLC
General Contractor

520-576-1546

Building on Mt. Lemmon since 1979
Specializing in Custom Log Cabins

General Plumbing Electrical Roofing
ROC 219566 ROC 221184 ROC 221185 ROC 221117

Matthew C. Harmon Christopher J. Harmon

(520) 576-1333
(520) 576-1300 PHONE/FAX

**MOUNT LEMMON REALTY, INC.**

ROBERT ZIMMERMAN
Broker
bobzim@mindspring.com

P.O. BOX 1
MT. LEMMON, AZ 85619-0751
MtLemmonRealty.com

GRIFFITH BUILDING

OVER 30 YRS EXPERIENCE
DESIGNING - BUILDING
REMODELING AND REPAIRING
VACATION HOMES & CABINS
GARY 256-9816 LIC # 062647

Mt. Lemmon Community Center

The Mt. Lemmon Community Center (MLCC) is part of Pima County's Natural Resources Parks Recreation (NRPR) department. The Mt. Lemmon Community Center, Inc. is organized exclusively for charitable, social and educational purposes. The facility is dependent upon local volunteers to staff and support the visitor's center. Our mission is to welcome all who visit the facility and promote Summerhaven, Mt. Lemmon and Pima County Arizona.

The MLCC board would like to encourage local social & charitable use of the community center. The community center can be used at no charge, with approval, for our local events.

Reservations to use the Community Center can be made by calling Kelly Cheeseman at the Pima County Parks and Recreation phone number: 520.877.6155 or E-mail Kelly.Cheeseman@pima.gov

COLORADO LOG ENTERPRISES LLC

Blasting-Staining-Chinking-Restoration
Preservation-All Log Specific Maintenance

ZERO FAILURE CERTIFIED

Cole Pay
303-249-9299
www.coloradologenterprises.com

Tony Christensen
303-915-3509



On Mt. Lemmon & in Tucson
520.906.5985
s.pearce@comcast.net

Susan (Susie)
Pearce

Pilates Instructor
Body Conditioning &
Structural Alignment
Ron Fletcher Method

A & E Recycled Granite, L.L.C.

1660 S. Research Loop
Suite 110
Tucson, AZ 85710
(520) 855-5970 Office
(520) 977-0561 Cell

John Eisele
Sales

John@aerectedgranite.com

**THE BUILT ENVIRONMENT**

ARCHITECTURE - PLANNING - DESIGN
Cabins - Custom Homes - Additions - Remodels

MATT HAMILTON
OWNER ARCHITECT

Free Consultation
www.thebuiltenvironment.webs.com
(520) 624 6129

simply bits

High Speed Internet

Avoid the Seasonal Rush!
Schedule Your
Installation Today

www.simplybits.com



Residential Plans
Starting at **\$24.95**

For more information
Call 520.547.7445

or email Lemmon@simplybits.com

5225 N. Sabino Canyon Rd, Tucson, AZ 85750

ATTENTION TO DETAIL

520-302-1443

We come to you!
Wash to Showroom detail
Head light restoration
Interior Shampooing
Engine steam cleaning
Paint restoration
Gift Certificates available

25 years experience
Professional Service
Satisfaction Guaranteed
Scheduling available



Fine Art Photography

IMAGES BY MELBA

Melba Cope 520-744-5095

epocphoto@comcast.net

My photos can be purchased at
The Living Rainbow

Cabin cleaning made easy

Next day, same day service available

Open/close cleaning jobs bid on site

Free estimates, flexible hours



Debbie Weatherly

520-203-3740

Email: Debbie.weatherly@gmail.com



Restaurant Winter Hours

The Cookie Cabin

Daily - 10:00 AM - 5:00 PM

The Iron Door

Monday, Thursday & Friday

10:30 AM - 4:30 PM

Saturday & Sunday

9:00 AM - 4:30 PM

(Get your FREE Skyride ticket! Sat. & Sun. Breakfast: 9 - 11)

Sawmill Run

Monday-Thursday 10:30 AM - 4:00 PM

Friday 10:30 AM - 8:00 PM

Saturday 9:00 AM - 8:00 PM

Sunday 9:00 AM - 5:30 PM



Bob Grady, Agent

8963 E Tanque Verde Road, Suite 195

Tucson, AZ 85749

Bus: 520-449-8766

bob@bobgrady.net

Monday - Friday 9:00a-6:00p

Saturday 9:00a-3:00p

Anytime by Appointment

Family is why we do it all.

We all feel the same commitment to care for our families. Helping you meet your insurance needs is part of my commitment to you.

**Like a good neighbor,
State Farm is there.®**

CALL ME TODAY.

 **State Farm™**

MLHOA

The Mt. Lemmon Homeowner's Association (MLHOA) was formed in 1969 to protect the welfare of the Mt. Lemmon community and to be involved in all aspects of its improvement. The concerns of the organization are not limited to private property owners. Full membership with voting rights is accorded to private owners and leased land holders upon payment of yearly dues. Being organized, having a legal fund and having active **LOCAL** voice participation enables the Association to accomplish most of its goals. Pima County has said the MLHOA is the strongest and most respected homeowner's organization in the entire county. Dues are \$35 per year payable in February. Renters and Friends of the Mountain may obtain membership for \$30 a year. The Annual Dinner and Meeting is held each year on the first Tuesday after taxes. To join the Mt. Lemmon Homeowner's Association, send a check to Box 699, Mt. Lemmon, AZ 85619.

The most visible product of the MLHOA is the **ECHOES**, a newsletter published ten times a year. The Association organizes social events such as potlucks, pancake breakfasts, ice cream socials and raffles, enabling owners to mingle. Members of the Board are: Michael Stanley, president; Bonnie Lohman, vice-president; Jennifer Rollins, treasurer; Mickie Gelsinger, secretary; Carrie Reitz, event coordinator; John Mulay; Pete Krauss; Debbie Fagan; Glen Schager; Mike Bernstein; Bill Piatkiewicz; Jenni Avram; Carol Niehoff and Jerry Taylor.

Advertising in the Echoes is \$10 per issue for a proportional business card and \$50 per issue for a 1/4 page ad.

Echoes Editors: Linda Currin (lcurrin@q.com) and Carol Niehoff (niehoff@aol.com)

<p>IMUS WILKINSON INVESTMENT MANAGEMENT</p> <p>Gary Imus Eb Wilkinson Managing Partners</p> <p><small>Gary.Imus@ImusWilkinson.com Eb.Wilkinson@ImusWilkinson.com 1820 E. River Road, Suite 104 Tucson, Arizona 85718</small></p> <p><small>Office: (520) 777-1911 Toll Free: 877.813-4983 Facsimile: (520) 579-4031</small></p>	<p><i>The Living Rainbow, Inc</i></p> <p>P.O. Box 753 Mt. Lemmon, AZ 85619 (520) 576-1519 rainbowz@mindspring.com fax (520) 296-4770 Debbie Fagan</p> <p><i>Windchimes and Gifts since 1979</i> Celebrating our 35+ year in business</p>	<p>ONE STOP AUTOMOTIVE (520) 571-1811 www.onestopautorepairtucson.com</p> <p>Randall Miller Owner</p> <p>1545 S. Craycroft Rd Tucson, AZ 85711</p>
<p>Steve Littler</p> <p>RANCHO LINDA VISTA</p> <p>Amy Buttery</p> <p>ARIZONA'S OLDEST GUEST RANCH ORACLE, ARIZONA</p>	<p>P.O. Box # 32683 Tucson, AZ 85751</p> <p>Estab. 1984</p> <p>DESERT TRUCKING 690-0808 "Your Dependable Truckers of Tucson" www.deserttrucking.com</p> <p>John "J.J." Johnson Transfers Cell (520) 449-8800 Super 16 & 18 Fax (520) 690-0011 Semi's & Bells 10 & 12 Wheel Dumps</p>	<p>Mt. Lemmon Guest Room Rentals</p> <p>520-576-9159 Susan & Mark Shomo 12780 N. Phoenix, Summerhaven</p>
<p>Elegant Excess</p> <p>Specializing in Beaded Badge Holders for Nurses, Teachers etc.</p> <p>By Carrie Reitz Phone 520-404-6772 See at: elegantexcess.com</p>	<p>WELLS FARGO ADVISORS</p> <p>Steve Hall, JD Senior VP - Investments 7630 North Oracle Road Tucson, AZ 85704 520-229-3020</p> <p>Together we'll go far</p> <p>Investment and Insurance Products: ▶ NOT FDIC Insured ▶ NO Bank Guarantee ▶ MAY Lose Value</p> <p>Wells Fargo Advisors, LLC, Member SIPC, is a registered broker-dealer and a separate non-bank affiliate of Wells Fargo & Company. ©2009 Wells Fargo Advisors, LLC. All rights reserved. 0409-1260 [74124 v1]</p>	<p>Sky Island Construction BUILDING ON MT. LEMMON</p> <p>GREG FERGUSON - PRESIDENT Office: 471.6322 Fax: 751.7918 Lic# 163522</p> <p>SKYISLANDCABINS@AOL.COM LICENSED, BONDED, INSURED</p>
<p>(520) 576-1333 (520) 576-1334 Res (520) 576-1300 PHONE/FAX</p> <p>MOUNT LEMMON REALTY, INC.</p> <p>FRANCES ZIMMERMAN P.O. BOX 1 Sales Assoc./Property Mngt. Mt. Lemmon, AZ 85619-0751</p>	<p>George R. Reitz Realtor® Multi Million Dollar Producer</p> <p>Home/Office: (520) 722-1265 Cell Phone: (520) 444-1439 Fax: (520) 303-4975 greitz2@cox.net</p> <p>Real Estate Marketing Professionals 7481 E. Tanque Verde Rd., Tucson, AZ 85715</p>	<p>(520) 576-1333 (520) 576-1300 PHONE/FAX (520) 861-0161 Cell</p> <p>MOUNT LEMMON REALTY, INC.</p> <p>JENNIFER L. AVRAM P.O. BOX 1 Sales Assoc./Property Mngt Mt. Lemmon, AZ 85619 jennimr@mindspring.com mtlemmonrealty.com</p>
<p>MADSON, BROWN & ASSOC., LTD</p> <p>EDWARD A. MADSON, SRA Certified Residential Real Estate Appraiser</p> <p>3131 N. Country Club Rd (520) 318-6000 Suite 203 FAX (520) 318-6006 Tucson, Az 85716 edward@madsonbrown.com</p>	<p>Cozzetti Construction, Inc.</p> <p>Dennis Cozzetti Owner 3849 E. Callede Soto Tucson AZ 85716</p> <p>520-323-7700 520-576-9022 520-685-1648 - cell denniscozzetti@msn.com</p> <p>AZ ROC 128028, 189210, 190420, 207012</p>	<p>EL RANCHO ENCANTO ASSISTED LIVING EXTRAORDINARY HOMES, SUPERIOR CARE</p> <p>Pam Haskell</p> <p>Phone: 520-885-0004 Fax: 520-885-7077 Cell: 520-245-8292 5705 & 5803 E Ft. Lowell Tucson, AZ 85712</p> <p>pamhaskell@elranchoenchant.com www.elranchoenchant.com</p>

Mt. Lemmon Homeowner's Assoc.
P.O. Box 699
Mt. Lemmon, AZ 85619

PRST STD
U.S. Postage
PAID
Tucson, AZ
Permit No. 26



Parting Shots



Clowning Around with the Band

Mt. Lemmon Homeowner's Association Annual Dues:

Voting member (property owner) \$35.00 - Non-voting member (renter or friend of the mountain) \$35.00

Make checks payable to MLHOA and mail to MLHOA P.O. Box 699 Mt. Lemmon, AZ 85619 Thank You!

Please include your mailing address, phone contact, and your email address.

For your records 2015 MLHOA Dues PAID: Ck# _____ Date _____ Amt. \$35