

The Mt. Lemmon Echoes

Doing More with Less, a Great Adventure!

Graduating from U of A med school in microbiology to become a doctor, to EMT training at Pima College, to flight medic, to Mt. Lemmon after “retiring” from his years with Tucson Fire Department as firefighter, EMT, Assistant Chief and Public Information Officer. It’s all about “making an impact on people’s lives.” Mt. Lemmon Fire District chief, Randy Ogden has an incredible list of accomplishments, and he’s not done yet!

Randy Ogden, after deep and significant life changes, brought his passion, expertise and love of Mt. Lemmon to the Mt. Lemmon Fire District in 2010. The challenge of transitioning from the Tucson Fire Department to working with the board of the Mt. Lemmon Fire District meant huge differences in management style, financial stability, equipment procurement and operating procedures. Ogden explains that a fire “department” is self-sufficient, never needing to ask for “help” to have its needs met, a “district,” not so much. Challenges fell on his shoulders, but they are being met with success and enthusiasm.

For starters: debt, low wages, aging equipment, safety issues, poor exhaust evacuation system, and wildland fire concerns, to mention just a few. Chief began by developing a plan to become financially stable, and today the MLFD is operating in the BLACK! He praises Linda Kent and her expertise for that, and also gratefully thanks the Mt. Lemmon community for its support with donations and fundraising such as the annual golf tournament. Updated safety equipment, a new exhaust system, new and updated ambulance, air packs, continuing education for EMTs and wildland firefighters, and AEDs for the community, all paid for outside of the regular operating budget. That’s just the beginning. Today the MLFD has an excellent reputation, an outstanding board of directors, and Ogden is proud to say the district stacks up with any other in the state!



Things have changed at the MLFD station. The red bay doors invite visitors to observe a well-equipped fitness training center, equipment donated, appreciated and well-used. Peer fitness training requires firefighters to work out 1 ½ hours every day. Favorite food means “anything,” but firefighters are eating healthier today. In addition to the chief, two firefighters (paramedic and EMT) are on duty, assisted by excellent Mt. Lemmon volunteers when needed. Electronic billing through Golder Ranch Fire District is now utilized meaning accident victims from Tucson serviced by MLFD are charged and collections made more effectively. MLFD is a business operating more efficiently today with an open door policy with the Mt. Lemmon community.

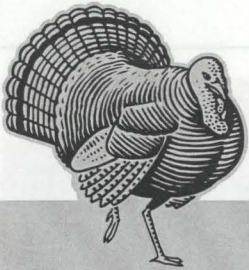
Scuba diving, camping with his RV and sand rail, 1970 Toyota Land Cruiser, grandkids, and of course Smokey, the two-year-old Black Lab, give Randy’s life those extra blessings, and books on tape pass the time up and down the mountain.

Most frustrating? Not being able to provide more for the district and its employees.

Scariest? Only two guys on duty; would like three. It’s all about money.

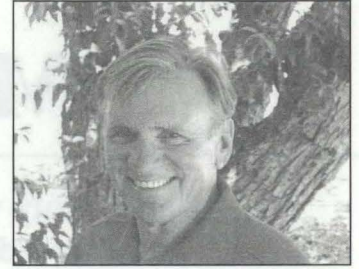
Most rewarding? Making MLFD a most credible district. Randy Ogden is well on his way in this great adventure!





Mt. Lemmon Homeowner's Association

by Jerry Taylor, president



November 2014

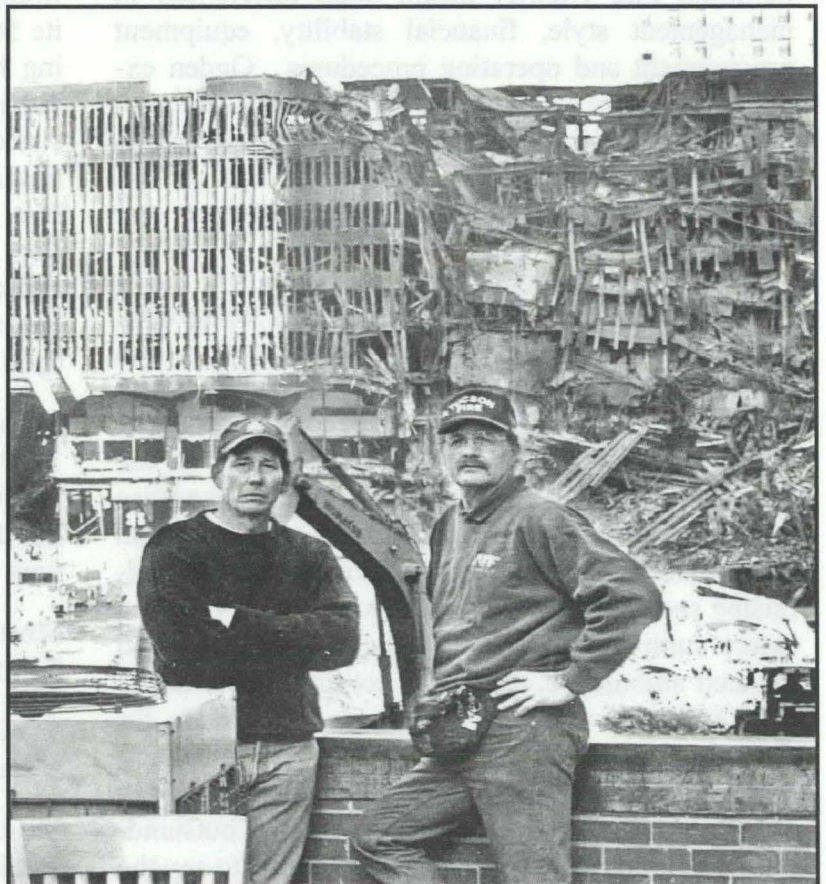
- 15th - MLWD -
Board Meeting 8 AM - MLCC
- MLHOA -
Board Meeting 10 AM - MLCC
- MLWC -
Membership Meeting 1 PM - MLCC
- 27th - Thanksgiving

This is our last issue for the Echoes this year, and it has been a good year, thanks to the outstanding job by Linda Currin and Carol Niehoff of putting it all together. It is so important we have this forum for communication. On behalf of the MLHOA board we say, thank you, thank you, and thank you. Also thanks to everyone else who contributed articles and advertisements. And again thanks to everyone for making this another great summer on the mountain although there will still be lots to enjoy this winter. Winter and snow season is just around the corner and is something to be enjoyed as much as the summer. How lucky we are to have all of this and be just a few minutes from the gorgeous winter climate of Tucson. Too much of a good thing is a good thing.



Letter to the Editors

In response to a recent comment concerning Music on the Mountain, another reader submitted this note. "Those were fantastic times. Yes, I am another one who missed Music on the Mountain. I loved the excitement, music, food, and getting acquainted to new friends on that wonderful occasion. Maybe you could put the tent up next year – rope it off and charge each person \$5.00 to get in to the music. I loved eating outside, shopping the General Store and Debbie's Living Rainbow. Those were really great times. Wish we could have it next year. Missed the FUN times at Music on the Mountain. Have a great day!"



Chief Randy Ogden at the World Trade Center disaster.

Water District Installations Continue

by Michael Stanley, MLWD

Mt. Lemmon Water District reports continuation of the main line installation in the Retreat area. The contractors have installed the Tucson Avenue main and are working on the Ray portion. This project has over 2,600 feet of 6" restrained joint steel main line. There are problems fitting the main line around the buried electrical lines, which along with rocks are creating additional work and expense for the installation. Hopefully when you read this Echoes, work will be completed. Then we are on to the Tempe Avenue portion. On both projects, we are installing main line pressure regulating stations to be used for keeping the pressure maintainable. On Tempe we need to install the regulator station and 300' of main line. There are no underground electrical issues, so it should take 10 days to 2 weeks to complete. Then pressure testing, flushing the lines, clean up and repaving the road cuts will finish the projects.

We have other in-house projects which will have to wait until our major contractor projects are completed. However, we continue to do winterization, operation and maintenance, master and customer meter reads, along with necessary maintenance and our smaller projects. Winterization will include insulation of meter boxes that are above the 24" grade, covering exposed main and service lines, prepping our weeps on lines known to freeze, installing both wooden stakes or fence posts to mark valves and system control points that might get covered with snow. Weeps are valves installed to run a small amount of water through the lines to keep them from freezing. Lines that have caused problems or are known to freeze are scheduled for either lowering or adding dirt over the lines to get sufficient coverage to prevent the winter time problems, and remember to call us if you have any water problems.

We ask our customers to shut off their water when they will be away from their cabins for any extended amount of time. When you shut off the meter, it will prevent a leak and the cause for major additional expense. And be sure to drain your pipes and winterize them if you're closing up for the season.

Our customers are required to have and maintain a shut-off valve on their side of the meter along with other equipment. We allow the customer to use our shut-off valve in the meter box if there is no valve on their side. Our valve requires a meter "T" wrench to operate. They are available at Ace Hardware for under \$20. When you access the District valve, please be careful with the wire that is attached to the lid on the box, making sure you don't pinch the wire between the lid and the box.

All of the District Board Members and Staff wish you Happy Holidays and a Wonderful New Year! We hope to see you soon.

THANKS FOR CARING AWARD

The Mount Lemmon Homeowner's Association honors

George Reitz

This month's award goes to George Reitz who, behind the scenes, pre-cooked a never-ending amount of bacon and sausage for the Pancake Breakfast on Labor Day weekend.

Many thanks, George, for 10 hours of slaving over a hot stove!

We all enjoyed the day.

It's Coming to Mt. Lemmon!

by Randy Ogden, Fire Chief

We're all hoping for a wonderful winter season with the beautiful white stuff that brings skiing, sledding and of course needed moisture for another minimal fire season. As the snow falls, remember a few important tips for safe driving when you come to Mt. Lemmon to enjoy winter weather.

Reduce your speed! When it snows, use your head, not your feet. Slow down for wet, snowy, or icy conditions, especially when the visibility is poor or conditions are changing or unpredictable, no matter what type of vehicle you drive. If you lose traction, even an SUV with four-wheel drive may not be able to stop any faster or maintain control any better. Slow down when approaching "black ice," that thin coating of clear ice which may be difficult to see. Avoid excessive actions while steering, braking, or accelerating; this will help lessen the chances of losing control of your vehicle.

Space out! Leave plenty of room between your vehicle and others. It takes more time and distance to stop a vehicle in adverse weather conditions, so brake carefully. Brake early, brake slowly, brake correctly, and **never** slam on your brakes. Winter conditions call for different driving tactics. **Remember:** ice and snow, take it slow – slower speed, slower acceleration, slower steering, and slower braking.

Travel safely around snowplows! Pima County provides plowing services on the Mt. Lemmon Highway and most Summerhaven roads as soon as conditions permit. Snowplows plow far and wide, sometimes very wide. The front plow extends several feet in front of the truck and may cross the centerline and shoulders during plowing operations. Snowplows are usually spreading de-icing materials from the back of the truck, and these materials can damage your vehicle's paint. Plows also may need to stop or take evasive action to avoid stranded vehicles. If you find yourself behind a snowplow, stay well behind it or use great caution when passing. The road behind a snowplow will be safer to drive on. When you spot a snowplow, allow plenty of time to slow down because the operator's field of vision is restricted. You may see him, but he may not see you.

Beware of road conditions! Stopping on snow and ice without skidding requires extra time and distance. If you have anti-lock brakes, press the pedal down firmly and hold it. If your vehicle doesn't have anti-lock brakes, gently pump the pedal. Either way, give yourself plenty of room to stop. When driving on snow, accelerate gradually, and when driving on snowy, icy or wet roads, avoid abrupt steering maneuvers. Merge slowly since sudden movements can cause your vehicle to slide. When driving in adverse road conditions, look farther ahead in traffic than you normally would do. Actions by other vehicles will alert you to problems more quickly and give you that split-second of extra time to react wisely.

Enjoy the upcoming winter season safely!

Thanksgiving at the Iron Door

Dinner will be served buffet-style from 11 AM to the last seating at 3:30 PM

Menu: Savory Slow-cooked Turkey	Sweet Yams with Marshmallows
Sauteed Fresh Green Beans with Bacon	Homemade Cornbread Stuffing
Yukon Mashed Potatoes with Gravy	Homemade Cranberry Sauce
Dinner Rolls	Pumpkin or Apple Pie

Refillable Drink Included in Dinner Price

Dinner Price is \$25 per person - Please make your reservations through Lorri at:

Mtlemmonpielady@gmail.com or call: 576-1321

Important Insurance Issues

by Bob Zimmerman

Recently cabin insurance was denied by several insurance companies because of a risk rating provided by FireLine, a rating service used by insurance companies, which ignored a favorable rating by Mount Lemmon Fire District. If you have recently had to change insurance companies or suffered a large increase in premiums, please determine if it was due to FireLine and let me know. We are reporting these incidents to Mount Lemmon Fire, Mount Lemmon Homeowners Association and Office of the State Fire Marshal. To read about FireLine, please check out their website: <http://www.verisk.com/About-Verisk/About-Verisk.html>

Bob Zimmerman, Mount Lemmon Realty 349-0013

The Soldier's Camp Monthly Bugle!

by Chuck Huber (Lower Soldier's Camp)



I am happy to report that significant progress has been made removing TRICO's slash from the south side of Road 8A in Lower Soldier's Camp. Many loads of wood slash have been transported to the Mt. Lemmon Fire Department's burn pile, but more trips are required; thanks to all who have participated in this effort. We also want to thank the MLFD for their support in the fuels reduction efforts.

Pima County has an interesting resource, the Automated Local Evaluation in Real Time System (ALERT). This system is a network of sensors that are available to monitor rain/ precipitation, as well as stream flow data. Data collected by the ALERT system is used by the National Weather Service (NWS) to assist in issuing flood watches and warnings and to ground-truth radar determined rainfall estimates.

<http://alert.rfcd.pima.gov/perl/Pima.pl>

There are three sensors very close to the Soldier's Camp/Summerhaven area. Sensor # 1090 is located at the peak of Mt. Lemmon. Sensor #2290 is in Sabino Creek, approximately .6 miles southeast of Marshall Gulch. This sensor is the closest to Soldier's Camp and is the most useful to the LSC residents. Sensor #2290 has both a rain gauge and a stream flow gauge. A third sensor of interest is #2150, near the Whitetail campground, west of the Palisades Ranger Station.

This website is very useful for monitoring precipitation events. I have noticed that someone at the NWS seems to translate snow into precipitation (equivalent rain), or perhaps this is done automatically by the sensor system itself. Snow data seems to be delayed for a day after the event.

I hope you find this website useful for monitoring significant weather events on the mountain from the comfort of your living room. Once you get to the main page, you will find you can use the tool to monitor the weather throughout the Tucson Basin.

Santa Catalina Ranger District is Experiencing Increased Bark Beetle Activity in Bear Canyon

by Rachael Biggs, USFS

Bark beetles are native disturbance agents that naturally exist at low levels throughout the forest. When warm, dry winters predominate, beetle activity can increase. Cold weather kills beetles and moderates the population, while an abundance of moisture allows trees to better fight off beetle attacks. Despite the Santa Catalina Mountains receiving an average of about 20 inches of rain this monsoon (elevations >6,000 feet), limited winter precipitation over the last few years has put stress on trees.

In the upper reaches of Bear Canyon, Ips engraver bark beetles are causing mortality in Arizona pine, Chihuahuah pine and ponderosa pine. Dead trees are visible from Catalina Highway near Chihuahuah Pine, Middle Bear and Cypress picnic areas and the General Hitchcock Campground.

The Coronado National Forest is working with Forest Health Protection, a branch of the Forest Service that manages insects and disease, to mitigate beetle damage and limit impacts to existing live trees.



A New Potential Fire Problem

by Susie Pearce and Glen Schager

We made it through another spring and summer without fire. Thanks to all of you for being careful and for the work you have done this summer to clean brush, tree trimmings, etc., from your properties. The drop-off area by the fire station has been a huge help in this effort.

Now we have another potential danger. This summer there has been an unprecedented growth of grasses and brush, and come next May and June, these materials will be a tinderbox for a fast-moving grassfire. Rather than waiting until then to clean up this material, you will find it easier to get through with a weed-eater now while it is still green than in the spring when the stalks are dry and hard. Besides, working outside in this autumn air is invigorating. The drop-off area near the fire station is still available for depositing your clippings, trimmings, etc. Just call the MLFD to arrange a time when someone can assist you. 576-1201.

Thanks for a fire-free season.

Don't Forget!

Being a member of the MLHOA provides you with a voice in our community and keeps you up to date with news, friends and interesting information. This is the last issue of the Echoes for 2014. Be sure to renew your membership in February 2015, in order to continue receiving your Echoes. Dues are \$35.00 for property owners and \$30.00 for renters and friends of the mountain. In the first issue, February 1st, you will receive a reminder to pay your dues to continue to receive the Echoes.

Mt. Lemmon Woman's Club Is Movin' and Shakin' into Fall!

by Linda Mulay, president

We have finished another big community project, which is great news!! With the support of the community members who made items for drawings, sold tickets, purchased tickets and made personal donations for the many fundraisers this summer, we have reached our goal of \$5,242.00 for the Mt. Lemmon Fire District's Technical Rescue Equipment.

MLWC donated \$2,000.

Dust n' Dine (Lorri and Debbie) raised \$1,095.

Loma Sabino Homeowner's Association \$1,000.

MLHOA (pancake breakfast) raised \$850.00.

Private donations totaled \$295.00.

The winner of the Bob Rice hand-turned wooden vase from the historic apple tree burned in the Aspen Fire was Judy Tully, and Erin Barghout won the hand-crafted wind chime created by Libby Mac.

The last Bunko for the year held October 17th was very successful with various items for prizes donated by Tom Riley, Kay and Gary Slocum and Dorothy Ragel. See you next summer for more fun and games.

Our speaker for the October meeting was Sirena Dufault who hiked the 817 mile Arizona Trail from the Mexican to Utah border. She started March 14, 2014, and ended May 31, 2014, stopping at 13 of the 33 Gateway Communities, of which Mt. Lemmon is one. She had beautiful slides and shared many of her stories.

Our club donated all the candy treats for the Halloween party which was held October 25th. On Sunday, October 19th, Linda Mulay, Donna Roll, Patsy Riley, Mary Rollins and Pam Winsten had a blast sampling and bagging all of the candies.

Saturday, November 1st, Linda Mulay, Connie Taylor and Luann Waldron are representing the MLWC at the GFWC-AZ Southern District conference held at the Pueblo De Sol Country Club in Sierra Vista.

The Annual Holiday Brunch will be Saturday, December 6th, at the Tucson home of Betty and Bob Rice. Thanks to Robin Kirk for chairing this event with the help of Cathie Brown. We will again have Catalina Village Assisted Living as the holiday project, so start saving your items for this needy group.

The next meeting of MLWC will be Saturday, November 15th, 1:00 PM, at the MLCC.

Sawmill Run News

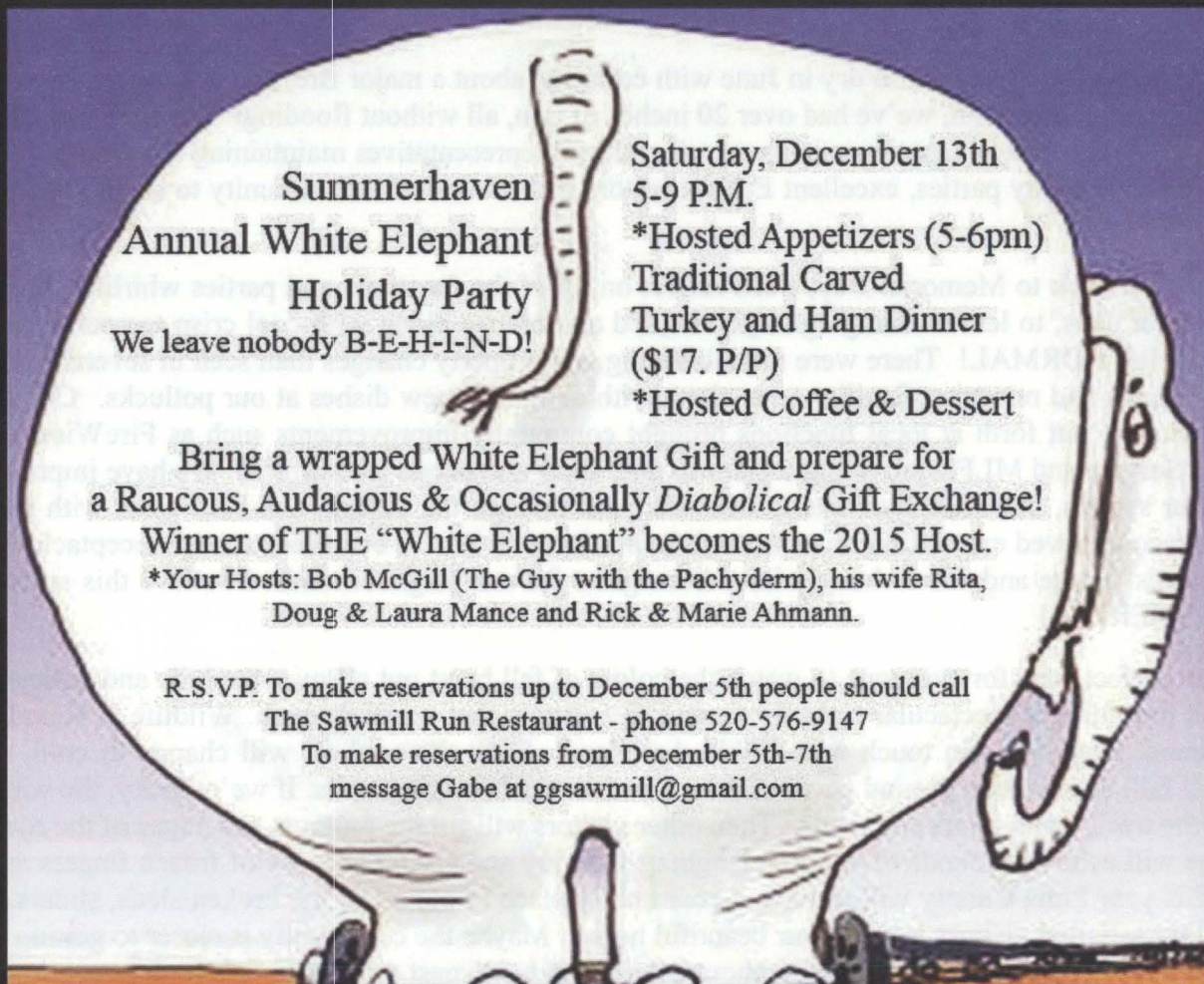
by Fran Zimmerman

The Sawmill will be closed from December 1st – 16th, unless we get at least 8" of snow on the ground, in which case we'll be open for business!

Wednesday, December 31st will be the 3rd annual New Year's Eve Party. The cost will be \$29.99 a person, and reservations will be required. Champagne toast at 10 PM to watch the New York City ball drop. The menu has not been decided yet, but do know that it will be delicious!

We will be sending out more information to all VIP members as December draws near.





Apolitical Aphorisms

If God wanted us to vote, he would have given us candidates.

~Jay Leno~

I offer my opponents a bargain: if they will stop telling lies about us, I will stop telling the truth about them.

~Adlai Stevenson, campaign speech, 1952~

If we got one-tenth of what was promised to us in these State of the Union speeches, there wouldn't be any inducement to go to heaven.

~Will Rogers~

We hang the petty thieves and appoint the great ones to public office.

~Aesop~

What a Summer We Had!

by Michael Stanley

It's hard to believe we were so, so dry in June with concerns about a major fire, and now, after three tropical storms, substantial monsoon, we've had over 20 inches of rain, all without flooding! We are a very fortunate community. And we have deputies to keep us safe, faithful representatives maintaining continuity on boards, a perfect place to enjoy parties, excellent Echoes editors and a wonderful community to share with our visitors!

Now, as I look back to Memorial Day, I can reflect on all of the functions and parties whirling through the warm summer days, to leaves changing to yellow, red and orange along with cool crisp temperatures. This year almost felt NORMAL! There were more building and property changes than seen in several years. We met new friends and returning familiar ones along with delightful new dishes at our potlucks. Constructive ideas for change put forth at local functions brought community improvements such as FireWise inspiring the Forest Service and MLFD providing a place to take slash and debris for burning. We have improvements to the water system, more fire hydrants, a sidewalk path through the village, and road work with paving to provide a second paved evacuation route through Loma Sabino. We've even seen a trash receptacle for holiday weekends. These and other changes have been great for our neighborhoods. I believe this summer has been WONDERFUL!

This is the perfect time for everyone to watch the colors of fall burst out all over the hills and valleys. Bear Wallow is providing a spectacular sight for us and the visitors that travel through. Wildlife is abundant and close at hand, keeping us in touch with "Wild America." Soon the cool air will change to cold, and the leaves will fall, maintaining ground cover as frost dips into the low lying areas. If we're lucky, the white stuff will coat the trees, trails, roofs and roads. Then other visitors will fill the pullouts and edges of the roads, and the village will echo the sounds of children laughing with joy and crying because of frozen fingers and toes. Perhaps this year Pima County will provide a community place to put all of the broken sleds, sliders, plastic and trash our satisfied visitors leave in our beautiful home. Maybe the community is closer to getting an area for these winter visitors to park and play without creating so many past problems. We look to continue experiencing improvements and solving problem situations we have worked on for so long. If we keep trying to make Summerhaven and the mountain better, I know we will have success.

This is the last Echoes until February of 2015. I hope the winter will be fabulous and provide everyone with joy-filled holidays, including wonderful times with family and friends. Remember to be careful, safe and enjoy our little piece of Heaven. Ha! I'll bet you thought I was going to say "Remember to shut off your water!" See you in 2015!



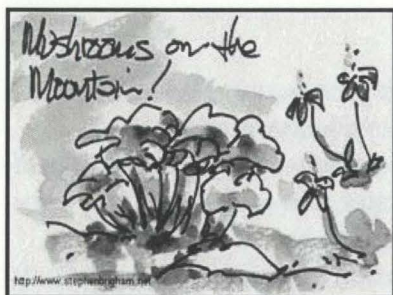
Thanks Be To God

for family, friends, and for His design –
rainbows, butterflies, and wayside flowers,
scent of desert rain or glow of sunshine,
for mountain rambles in early morning hours.
For awakening each day with work to do,
or the peace of sitting lost in contemplation,
for loving, laughing, and for crying, too,
when we turn from shadows to elation.

by Mary Ellen Barnes

Mountain Fruits of the Monsoon

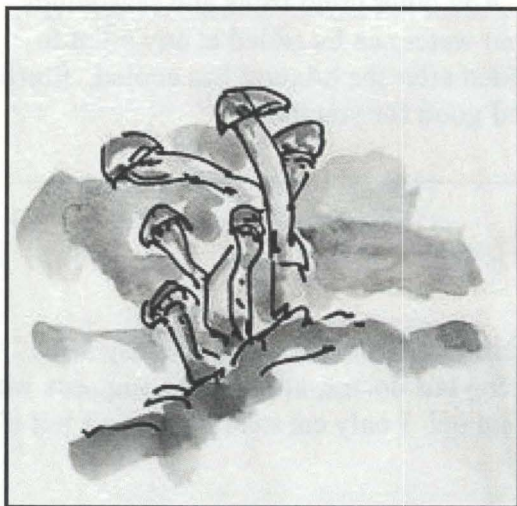
by Steve Brigham



This has been a good monsoon for the Tucson desert regions. Thanks to two hurricanes that brought lots of moisture, our rain gauges show that we've received nearly 20 inches of rain on the mountain. Rain transforms the desert and Mt. Lemmon. It turns our washes into rivers, it makes our mountains green, and it creates fruits from the hidden fungi beneath the soils. This year the fruit of the fungi - mushrooms - showed their glory under the pine trees all over the mountains, including a large cluster of boletes at our cabin entry.

Last month we joined our friend, Dr. Marc Orbach, a distinguished mycologist from the School of Plant Sciences at the University of Arizona in the annual "Fungal Foray" to Mt. Lemmon to seek out the wide variety of fungi and their fruits that typically arise after a good monsoon. We met in Bear Canyon with Marc's colleagues, Drs. Betsy Arnold and Barry Pryor, and about 2 dozen students, colleagues, and friends interested in searching for fungi in the cool pines.

The variety of fungi was astounding, and I learned that categorizing mushrooms is a rather complex affair with professors and students often referring to the many guidebooks that were brought to the foray. Marc also acknowledged that they sometimes have to simply refer to some mushrooms as "LBMs," little brown mushrooms. It reinforced our belief that this was not going to be a hunt for edible mushrooms to sauté later but rather an introduction to another fascinating aspect of the mountain.



Unknown mushrooms
with features suitable for sketching



Marc in his mushroom shirt - Betsy and Barry discussing specimens
from Bear Canyon and Bear Wallow.

That evening when we went back to our kitchen, we rehydrated some Trader Joe's shiitake mushrooms and sautéed them, knowing that someone else knew what they were doing in selecting these mushrooms to eat. It was amazing how good they were, having been in our cupboard for the past few years.

As the summer fruits fade away, think about these easy ways to enjoy dried and canned fruits!

Prune Compote

by Bob Rice

I am pleased to share my Prune Compote recipe for several reasons. First, I like prunes, and I believe the Sunsweet brand dried plums (available at Costco) have been an excellent product consistently over the years. Second, the recipe is almost not a recipe as the compote is so flexible and adaptable to individual preferences and tastes. I always keep a covered bowl of the compote in my refrigerator, but each batch will vary somewhat. The size of a batch can easily be adjusted, and individual ingredients can be varied in amounts, eliminated altogether, or creative substitutes utilized. Therefore, with the exception of the quantity of prunes I usually start with, I will not provide quantity suggestions, but rather leave that choice up to experimentation by the cook!

Fruits

Sunsweet pitted prunes
(approx. 1.5 to 2 lb. or roughly half a 3.5 lb. bag)
Golden raisins
Jumbo raisins (medley)
Dried cranberries, cherries and/or mango
(cut into approx. ½ inch chunks)

Spices

Cinnamon
Nutmeg
Allspice
Clove powder
Anise
Lemon juice
Salt (dash)

Fruit liqueur (orange, peach, or apricot...they are all good!)

Using kitchen scissors, cut about half the prunes in two. (It helps make the compote a bit gooier which I prefer.) In a pan, cover the prunes with water and turn on medium heat. Add other dried fruits and seasonings of choice. Cook the mixture on simmer for about one hour. Additional water can be added at any point to achieve the preferred consistency. Fruit liqueur, if used, should be added after the mixture has cooled. Store in a sealed bowl in the refrigerator...it keeps indefinitely, it's good and good for you too!!

Ambrosia Salad

by Leigh Anne Thrasher

Ambrosia is defined as "food for the gods," and that definition certainly fits this delicious, yet easy salad. This "salad" may be the one we secretly have in mind when answering our doctor, after he/she suggests we need to lose a few pounds, with the comment, "But Doc, how can that be! I only eat salad!" I won't tell if you won't tell!!

Ingredients:

1 cup pineapple chunks, drained
1 cup mini marshmallows
1 cup shredded coconut
1 cup sour cream
1 cup Mandarin oranges, drained



Directions:

Mix together and serve. Best refrigerated and served later that day or next day. Enjoy!!

Mount Lemmon Listserv

Receive information from the Mt. Lemmon community by signing up on the **Mt. Lemmon Listserv**. Send an email to the listserv at Announcements@mtlemmonhoa.org with **your name and email address**. We will sign you up and you will receive instructions on how to use the listserv.

Important Numbers:

Road Conditions 547-7510
Post Office 576-1427
Trico Electric 744-2944
Water District 576-1538
Amerigas 887-7120
Arizona Propane 750-9116



PROUDLY SERVING ARIZONA FOR 42 YEARS

Arizona Propane

GAS PRODUCTS SALES & SERVICE

- ✓ FAMILY OWNED
- ✓ COMPETITIVE PRICING
- ✓ NO HIDDEN FEES
- ✓ UNBEATABLE SERVICE
- ✓ RV COMPATIBLE
- ✓ RESIDENTIAL & COMMERCIAL

520-750-9116**APRILK@ARIZONAPROPANE.COM**

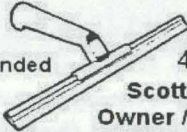
ENJOY A
MOUNTAIN
OF SAVINGS!

COMMERCIAL SALES

TIM 520-444-2576

TIM@ARIZONAPROPANE.COM**TRUELOVE WINDOW CLEANING**

(formerly CRYSTAL VISION)

Professional
and FriendlyLicensed, Bonded
and Insured**(520)****465-7195****Scott Truelove**
Owner / Operatorwww.truelovewindowcleaning.com**M. C. Harmon Construction, LLC**
General Contractor**520-576-1546**

Building on Mt. Lemmon since 1979

Specializing in Custom Log Cabins

General	Plumbing	Electrical	Roofing
ROC 219566	ROC 221184	ROC 221185	ROC 221117

Matthew C. Harmon Christopher J. Harmon

(520) 576-1333
(520) 576-1300 PHONE/FAX**MOUNT LEMMON REALTY, INC.****ROBERT ZIMMERMAN**
Broker
robzim@mindspring.com**P.O. BOX 1**
MT. LEMMON, AZ 85619-0751
MtLemmonRealty.com**COLORADO LOG ENTERPRISES LLC**Blasting-Staining-Chinking-Restoration
Preservation-All Log Specific Maintenance**ZERO FAILURE CERTIFIED****Cole Pavy**
303-249-9299**Tony Christensen**
303-915-3509www.coloradologenterprises.com

Complete Rain Water Harvesting Systems

**Southern Arizona**
Rain Gutters, Inc.Commercial / Residential
ROC #210367**John Eisele**Office 299-RAIN (7246) Cell 520-977-0561
john@sargutters.com1627 N. Stone Ave. Tucson AZ 85705
www.southernarizonaraingutters.com**GRIFFITH BUILDING**

OVER 30 YRS EXPERIENCE

DESIGNING - BUILDING

REMODELING AND REPAIRING

VACATION HOMES & CABINS

GARY 256-9816 LIC # 062647ascending phoenix
PILATESOn Mt. Lemmon & in Tucson
520.906.5985
s.pearce@comcast.net**Susan (Susie)**
PearcePilates Instructor
Body Conditioning &
Structural Alignment
*Ron Fletcher Method***THE BUILT ENVIRONMENT**ARCHITECTURE - PLANNING - DESIGN
Cabins - Custom Homes - Additions - Remodels**MATT HAMILTON**
OWNER ARCHITECT

Free Consultation

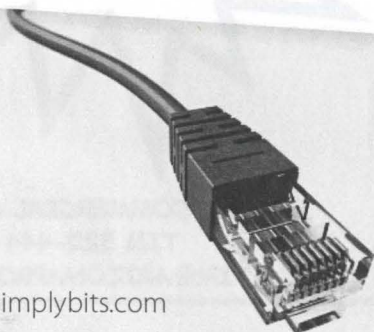
www.thebuiltenvironment.webs.com
(520) 624 6129



Now in Summerhaven Simply Bits Internet

Residential Plans: Basic, Popular, Premium

www.simplybits.com



For more information
Call 520.547.7445
or email Lemmon@simplybits.com

5225 N. Sabino Canyon Rd, Tucson, AZ 85750 | 520.547.7445

ATTENTION TO DETAIL

520-302-1443

We come to you!
Wash to Showroom detail
Head light restoration
Interior Shampooing
Engine steam cleaning
Paint restoration
Gift Certificates available

25 years experience
Professional Service
Satisfaction Guaranteed
Scheduling available



Fine Art Photography

IMAGES BY MELBA

Melba Cope 520-744-5095

epocphoto@comcast.net

My photos can be purchased at
The Living Rainbow

Cabin cleaning made easy

Next day, same day service available

Open/close cleaning jobs bid on site

Free estimates, flexible hours



Debbie Weatherly

520-203-3740

Email: Debbie.weatherly@gmail.com



Restaurant News

Sawmill Run Winter Hours Beginning November 1

Closed Mondays
Tuesday-Friday 11:00 AM - 5:00 PM
Saturday 11:00 AM - 8:00 PM
Sunday 11:00 AM - 5:00 PM

Hope to see you this winter!
Stop in at Mt. Lemmon Realty office to receive your
2014-2015 VIP Discount card.

The Iron Door

HOURS:

Monday, Thursday & Friday
10:30 AM - 4:30 PM

Saturday & Sunday
9:00 AM - 5:00 PM

The Cookie Cabin

Hours:

Monday thru Friday 10:00 - 5:00 PM
Saturday and Sunday 10:00 - 5:00 PM
Delighting customers with:
Pizza, Chili, and Giant Cookies

Ski Valley News

- On Saturdays and Sundays, a free Skyride with breakfast from 9:30 AM - 11:00 AM.
- On Thursdays, each lunch ticket is given a two-for-the-price-of-one Skyride coupon.

MLHOA

The Mt. Lemmon Homeowner's Association (MLHOA) was formed in 1969 to protect the welfare of the Mt. Lemmon community and to be involved in all aspects of its improvement. The concerns of the organization are not limited to private property owners. Full membership with voting rights, is accorded to private owners and leased land holders upon payment of yearly dues. Being organized, having a legal fund and having active **LOCAL** voice participation enables the Association to accomplish most of its goals. Pima County has said the MLHOA is the strongest and most respected homeowner's organization in the entire county. Dues are \$35 per year payable in February. Renters and Friends of the Mountain may obtain membership for \$30 a year. The Annual Dinner and Meeting is held each year on the first Tuesday after taxes. To join the Mt. Lemmon Homeowner's Association, send a check to Box 699, Mt. Lemmon, AZ 85619.

The most visible product of the MLHOA is the **ECHOES**, a newsletter published ten times a year. The Association organizes social events such as potlucks, pancake breakfasts, ice cream socials and raffles, enabling owners to mingle. Members of the Board are: Jerry Taylor, president; Bonnie Lohman, vice-president; Jennifer Rollins, treasurer; Carrie Reitz, secretary; Mickie Gelsinger; John Mulay; Pete Krauss; Debbie Fagan; Glen Schager; Michael Stanley; Mike Bernstein; Bill Piatkiewicz; Jenni Avram; Carol Niehoff and Bob Gary.

Advertising in the Echoes is \$10 per issue for a proportional business card and \$50 per issue for a 1/4 page ad.

Echoes Editors: Linda Currin (lcurrin@q.com) and Carol Niehoff (niehoffc@aol.com)

<p>IMUS WILKINSON INVESTMENT MANAGEMENT</p> <p>Gary Imus Eb Wilkinson Managing Partners</p> <p>Gary Imus@ImusWilkinson.com Eb.Wilkinson@ImusWilkinson.com 1620 E. River Road, Suite 104 Tucson, Arizona 85718</p> <p>Office: (520) 777-1911 Toll Free: 877-613-4985 Facsimile: (520) 529-4131</p>	<p><i>The Living Rainbow, Inc</i></p> <p>P.O. Box 753 Mt. Lemmon, AZ 85619 (520) 576-1519 rainbowz@mindspring.com fax (520) 298-4770 Debbie Fagan</p> <p><i>Windchimes and Gifts since 1979</i> Celebrating our 35+ year in business</p>	<p>ONE STOP AUTOMOTIVE (520) 571-1811</p> <p>ONE STOP AUTOMOTIVE</p> <p>Wendall Miller ASE 1545 S. Craycroft Rd. Tucson, AZ 85711</p> <p>www.onestopautorepairtucson.com</p>
<p>Steve Littler</p> <p>RANCHO LINDA VISTA</p> <p>Amy Buttery</p> <p>ARIZONA'S OLDEST GUEST RANCH ORACLE, ARIZONA</p>	<p>P.O. Box # 32683 Tucson, AZ 85751</p> <p>Estab. DESERT TRUCKING 1984 690-0808 "Your Dependable Truckers of Tucson" www.deserttrucking.com</p> <p>John "J.J." Johnson Transfers Cell (520) 449-8800 Super 16 & 18 Fax (520) 690-0011 Semi's & Bells 10 & 12 Wheel Dumps</p>	<p>Mt. Lemmon Guest Room Rentals</p> <p>520-576-9159 Susan & Mark Shomo 12780 N. Phoenix, Summerhaven</p>
<p>Elegant Excess</p> <p>Specializing in Beaded Badge Holders for Nurses, Teachers etc.</p> <p>By Carrie Reitz Phone 520-404-6772 See at: elegantexcess.com</p>	<p>WELLS FARGO ADVISORS</p> <p>Steve Hall, JD Senior VP - Investments 7630 North Oracle Road Tucson, AZ 85704 520-229-3020</p> <p>Investment and Insurance Products: ► NOT FDIC Insured ► NO Bank Guarantee ► MAY Lose Value</p> <p>Wells Fargo Advisors, LLC, Member SIPC, is a registered broker-dealer and a separate non-bank affiliate of Wells Fargo & Company. ©2009 Wells Fargo Advisors, LLC. All rights reserved. 0409-1260 [74124-v1]</p>	<p>Sky Island Construction BUILDING ON MT. LEMMON</p> <p>GREG FERGUSON - PRESIDENT Office: 471.6322 Fax: 751.7918 Lic# 163522</p> <p>SKYISLANDCABINS@AOL.COM LICENSED, BONDED, INSURED</p>
<p>(520) 576-1333 (520) 576-1334 Res (520) 576-1300 PHONE/FAX</p> <p>MOUNT LEMMON REALTY, INC.</p> <p>FRANCES ZIMMERMAN Sales Assoc./Property Mngt.</p> <p>P.O. BOX 1 Mt. Lemmon, AZ 85619-0751</p>	<p>George R. Reitz Realtor® Multi Million Dollar Producer</p> <p>Home/Office: (520) 722-1265 Cell Phone: (520) 444-1439 Fax: (520) 303-4975 greitz2@cox.net</p> <p>Real Estate Marketing Professionals 7481 E. Tanque Verde Rd., Tucson, AZ 85715</p>	<p>(520) 576-1333 (520) 576-1300 PHONE/FAX (520) 861-0161 Cell</p> <p>MOUNT LEMMON REALTY, INC.</p> <p>JENNIFER L. AVRAM P.O. BOX 1 Sales Assoc./Property Mngt Mt. Lemmon, AZ 85619 jennimir@mindspring.com mtlemmonrealty.com</p>
<p>MADSON, BROWN & ASSOC., LTD</p> <p>EDWARD A. MADSON, SRA Certified Residential Real Estate Appraiser</p> <p>3131 N. Country Club Rd Suite 203 Tucson, Az 85716 (520) 318-6000 FAX (520) 318-6006 edward@madsonbrown.com</p>	<p>Cozzetti Construction, Inc.</p> <p>Dennis Cozzetti Owner 3849 E. Caliente Soto Tucson AZ 85716</p> <p>520-323-7700 520-578-9022 520-665-1648 - cell denniscozzetti@man.com</p> <p>AZ ROC 128026, 189210, 190420, 207012</p>	<p>EL RANCHO ENCANTO ASSISTED LIVING EXTRAORDINARY HOMES, SUPERIOR CARE</p> <p>Pam Haskell Phone: 520-885-0004 Fax: 520-885-7077 Cell: 520-245-8292</p> <p>5705 & 5803 E Ft. Lowell Tucson, AZ 85712 pamhaskell@elranchocanto.com www.elranchocanto.com</p>

**Mt. Lemmon Homeowner's Assoc.
P.O. Box 699
Mt. Lemmon, AZ 85619**

**PRST STD
U.S. Postage
PAID
Tucson, AZ
Permit No. 26**

Parting Shots



See ya' in February 2015