

The Mt. Lemmon Echoes

Pamela Selby-Harmon Directs Information Central

On a beautiful sunny Summerhaven day, a steady stream of folks stop by the Mt. Lemmon Post Office to pick up, deposit, buy, ask, chat, or a combination of things, and Pamela Selby-Harmon provides her smile, humor, knowledge and genuine interest to all.

The Indiana transplant attended the U of A on a swimming scholarship and has made Tucson home ever since. Her 500 freestyle record set at the U of A 31 years ago was finally surpassed earlier this year. Amazing! Thoughts of law school faded, family also moved to Tucson, and after being introduced to a handsome young man who loved Mt. Lemmon, she fell in love with both the man and the mountain, and here we are! Matthew and Pamela married in 1990 and lived on the mountain until the Aspen Fire destroyed their cabin. Now she commutes every weekday to be the “Officer-in-Charge” at the post office. Genevieve, age 6, is the couple’s pride and joy and completes their special family. Hobbies include camping, hiking, recreational swimming and other fun stuff.

For 13 years, Pamela subbed for former postmaster, Mark Hopkins, until he retired 4 years ago, and she was instrumental in keeping the post office from being closed due to budget constraints. She continues to urge community support and hopes tourists and residents, both permanent and seasonal, will use the post office whenever possible. The post office “has a great variety of stamps, in-



cluding all the latest Forever Stamps (Songbirds, Hot Rods, Jimi Hendrix, the Star-Spangled Banner) and even the new Inverted Jenny!” Jenny was a Curtiss JN-4 biplane built in the 1910s, and in 1918 a stamp bearing its likeness was printed upside down by accident. Stop in and learn about the Inverted Jenny, because only 100 stamps out of 2.2 million sheets issued were printed correctly, the most famous misprint in postal history! Only 8 have been found, so guess what? Someone paid \$25,000 for one of the rare sheets. Pamela is just the person to talk to about taking a chance on the Inverted Jenny, learning some cool history, and supporting your local post office too. She also offers great mailers, special packaging services and personalized attention for all your postal needs. She’s fun, mellow, intelligent, and has lots of great stories.

Could driving up and down the mountain five days a week get boring? Not! Mystical colors, clouds, sun coming up just past Windy Point introduce the days to her; deer, bobcats, coati, birds and even a female mountain lion posed for her at Mile Post 2 one morning. Pamela sorts 12-14” of letters, processes mail, stuffs the many PO boxes, handles up to 20 or more packages, and visits all who come throughout the day. At 2:00, mail is readied for dispatch down the mountain by 3:00.

Pamela’s specialty is the customer service she provides the community and hopes to share her enthusiasm, loyalty and knowledge for years to come.



Keep Doin' That Rain Dancing!

by Jerry Taylor, president

**JULY 2014**

- 4th - Fourth of July Parade**
- 12th - Helipad open for slash 10 AM-4 PM**
 - BUNKO! 6:30 PM - MLCC**
- 13th - Helipad open for slash 10 AM-4 PM**
- 18th - Iron Door Restaurant Dinner 5-8 PM**
- 19th - MLWD -**
 - Board Meeting 8 PM
- MLHOA -**
 - Board Meeting 10 AM
- MLWC -**
 - Membership Meeting 1 PM
- 19th - Humming Birds - Elissa Fazio**
 - MLCC at 2:30 PM
- 19th - MLHOA Potluck Dinner**
 - MLCC at 6 PM

All Homeowner's dues will be collected in the month of February. February? Yes, February, which is the month your Echoes commence publication for the current year. In the first issue, February 1st, you will receive a reminder of the need to pay your dues to continue to receive the Echoes.

Just as I am writing this article it started raining and hailing. My rain gauge showed over ½ inch of very welcome moisture so far. The most cherished time I spend on the mountain is to be on my porch during a summer rain. I hope this is the first of many to come. There is a sense of relief when it rains, as I think everyone, especially those of us who had cabins destroyed in the Aspen Fire, have a fire danger fear that is constantly with us.

One issue we did not have prior to the Aspen Fire is the insidious cheatgrass and/or Red Brome invasive, potential fire fuel. I did not have any last year on my property, however this year it appears to be everywhere. It must not be ignored. This is an issue before the MLHOA board. It is hoped more can be done to eradicate these invasive weeds during the active growing season next spring, but this requires a total community effort, and more information will be forthcoming. Thanks to Lindy Brigham for her efforts in this regard. We also appreciate any efforts made by the Forest Service and Pima County.

Remember to attend the summer functions on the mountain. Check the calendar and articles included in this issue of the Echoes for all the possibilities, and sign up to be in the annual 4th of July parade! It's all fun, and you are guaranteed to meet some of the finest folks in the world. Too much of a good thing, is a good thing!

Community Potluck Dinner**July 19th - 6 PM at the Mount Lemmon Community Center****Don't miss this evening of fun and food sponsored by your Mount Lemmon Homeowner's Association!**

Everyone is asked to bring a main dish to share. We will have electrical outlets for crock pots (hint, hint). Remember to bring your serving utensils.

The Homeowner's Association will provide plates, utensils, lemonade and dessert.



Support our local firehouse!
Raffle tickets are on sale now at the
firehouse or thru Lorri at Ski Valley
Winner gets a gourmet meal for 2,
and 2 hours of house cleaning
\$10 each or 3 for \$25

Fundraiser!!

The winning ticket will be drawn
on Sunday, August 31st
by Chief Randy Ogden
at the Pancake Breakfast

Questions?
Contact Lorri at
Mtlemonpielady@gmail.com

The Parade Is Almost Here!

by Jennifer Shacter

Pipers and ponies and dancers...Oh, My! Just some of the wonderful entries you may see as part of this year's 4th of July Parade. Our very own Fire Chief Randy Ogden will serve as the Parade Grand Marshall this year, and he did a great job of ordering up some rain the other day to keep our mountain top safe!

While the entry deadline may have passed, you never know how forgiving I'll be if you make a sweet telephone call and beg forgiveness for your late entry! Another reason to give me a call is to volunteer your time to help with parade check-in, traffic control, and/or crowd control, AND you'll still be able to watch the parade! I can be reached at (520) 749-9233 weekdays through July 2nd or (520) 576-9329 weekends and July 3rd up until the parade. I WILL NOT have access to e-mail after July 1st, so don't even try!

Of course, we'll have several special things happening on July 4th besides the parade... The Tucson Community Band will be playing on the patio of the Mt. Lemmon Community Center beginning around 10:30 AM, so come up and enjoy the music. The Rockin' Star Ranch will have a petting zoo and pony rides for kids set up in the flat area south of the MLCC all day long. Walgreen's will be back again this year with bottled water and other freebies near the MLCC. The Mt. Lemmon Woman's Club (your parade sponsor) will be selling tickets for the carved apple wood vase in front of the MLCC, with proceeds to the Mt. Lemmon Fire Department. And, of course, the businesses in Summerhaven & Ski Valley will be open to serve the community and visitors!

The road into Summerhaven will close no later than 11:30 AM and reopen following the parade. Parking is limited, so plan to arrive early. Stay to enjoy a cool, summer afternoon and some delicious Mt. Lemmon fudge, cookies, chili, pie, some shopping, a sky-ride, etc....

Newspaper Delivery

Jenni Avram will provide the Sunday paper for residents at a price of \$2.50, payable in advance. Please contact Jenni at Mt. Lemmon Realty to place your order 576-1333. Delivery will be by 11:30 on Sunday mornings at Mt. Lemmon Realty.

Show Me the Money

by Randy Ogden, Fire Chief



The Mount Lemmon Fire District

is your full-service fire and emergency medical services provider. If you need help above mile post 10, we are here for you. We work closely with the Pima County Sheriffs and the USFS. It's often 60-90 minutes before we get back-up assistance for fighting fires or treating sick or injured hikers or residents. Where does our money come from and where does it all go? I just want to know where to find more!



MLFD is funded primarily by secondary property taxes (\$504,917.00) and the AZ Fire District Assistance Tax (\$100,983.00). Additionally, we provide subscription coverage to a few properties outside of our response district. The District has been working hard to recover money through billing for MLFD providing emergency services to non-resident EMS/Rescue patients. In this world of tight insurance coverage, this has been a slow but promising way to offset some of the costs. We have been successful with grants, corporate/private partnerships and foundation funding. My command truck, the new computer and radio systems, new cardiac monitors, new firefighting turnout gear, breathing air compressor system, new self-contained breathing equipment and station exercise equipment have all been funded through sources outside of your taxes. The big red brush/tanker truck (our 3rd engine) comes to us as a State asset – no cost to our residents.

This year's approved budget is \$615,960.00. Where does it go? Salaries and wages total \$378,413, covering 7½ staff – that's including me and my hero - Linda Kent! A beginning MLFD firefighter's wage is \$36,000.00 per year; Tucson area firefighter's is \$39,290. A senior Tucson area firefighter expects to reach an annual salary of \$56,970.00. FYI, we have NOT been able to provide raises in the past few years for crews. The Mountain is very fortunate to have dedicated professional firefighters and paramedics, not driven exclusively by money. Insurance costs are killing us: Worker's Comp \$42,000.00, Medical Insurance \$38,500.00, Liability \$14,500.00, Retirement \$29,000.00.

This doesn't leave much for the nuts and bolts of running a fire district: essentials like fuel, utilities, vehicle maintenance, equipment maintenance/replacement, dispatch services, training or toilet paper! Fundraising is a vital survival tactic. We just received our letter from the feds with the 501(c)3 status number! Please support our Annual MLFD Golf Classic (Nov. 7th) and buy tickets for the Woman's Club drawings.

It is important for you to know we paid off one of our two loans this year; we now own the pink slip for the fire engine, and we only have a couple years left of our Pima County Loan! MLFD provides an amazing public service with an elite crew of professionals with the budget that we are given. Please stop the guys when you see them and let them know they are appreciated. Volunteers – we couldn't be here without your dedication and service. It is an honor to serve this community.

Please Be FireWised!

by Glen Schager and Susie Pearce

Thank you to the Mt. Lemmon Community for your participation in the "Slash Disposal" being offered to our residents. Please continue to FireWise your properties and take the slash to the Mt. Lemmon Fire Department to be burned. Continue to call Glen Schager at 520-465-6906, if you need a truck to take your bagged slashed to the Fire Department.

Remember to sign up for the "FireWised Property Inspection." The more knowledge we have about our property and its FireWise status, the safer we will be!

Please read the Slash Disposal and Property Inspection Flyer.

Community Wildfire Protection Plan Update

by Sue Clark

The Pima County Community Wildfire Protection Plan (CWPP) is complete. Now the parts that apply only to Mt. Lemmon are being combined with aspects of our old plan to create a stand-alone Mt. Lemmon CWPP. The goal is to simplify and have it be more reader and user friendly for the community than the overall Pima County plan. We are choosing the parts that meet the requirements of the CWPP which are relevant to Mt. Lemmon. This will help our community, along with the Mt. Lemmon Fire Department and Coronado National Forest, to mitigate the impact of fire on all of us and the natural surroundings. There are some parts that still need to be re-written to narrow the focus to just the history and background for Mt. Lemmon and not the entire county.

When considering our work in the context of the process for the whole county plan, I am very proud of the collaboration and participation of the community, MLFD, and the Forest Service. Collaboration between communities and government agencies is one of the minimum requirements for a CWPP according to the Healthy Forest Restoration Act (HFRA), and we have definitely met that requirement.



SOLUTIONS TO YOUR DISPOSAL
OF SLASH RESULTING FROM YOUR PROPERTY CLEANUP EFFORTS
(brush, tree clippings, dead growth, pine needles)
AND

NOTICE OF A FREE PROPERTY INSPECTION

SLASH DISPOSAL

Thanks to an agreement between the Forest Service and our Fire District,
SLASH CAN BE DISPOSED OF AT THE HELIPAD BY THE FIRE DEPARTMENT.
The fire department personnel need to unlock the gate, so call first to make sure they are available (520-576-1201). If you need help transporting your slash, put it by the road, then call 520-465-6906 (Glen Schager - Firewise co-chair)

FREE FIREWISE PROPERTY INSPECTION

CALL THE FIRE DEPARTMENT (520-576-1201) TO SET UP AN APPOINTMENT

We are encouraging all property owners to participate in this opportunity. Your participation will increase the safety of your property and the community as a whole.

THANKS FOR CARING AWARD

The Echoes Editors honor

DENNIS COZZETTI and LINDY and STEVE BRIGHAM

This month's award is given to Dennis, Lindy and Steve for their diligent efforts in helping the community eradicate cheatgrass. Thank you for your dedication to our mountain.

Santa Catalina Ranger District Fire Season Update

The Santa Catalina Ranger District is well prepared for the 2014 fire season. The SCRDR has two fully staffed fire engines, a helitack crew, a fire prevention team, and a fire lookout trained and ready to respond to emerging fire incidents. In response to the increased potential for significant fire activity, the Coronado National Forest, in coordination with our interagency partners, entered into Stage II Fire Restrictions on June 5, 2014. The following acts are prohibited within the Coronado National Forest until fire restrictions are lifted:

- Building, maintaining, attending, or using a fire, campfire, charcoal, coal, wood or stove fire, including within a developed recreation site or improved site. 36 CFR 261.52(a)
a. EXCEPTION: Use of petroleum-fueled stoves, lanterns, or heating devices is allowed so long as such devices meet the fire underwriter's specifications for safety.
- Using an explosive. 36 CFR 261.52(1)
- Smoking, except within an enclosed vehicle or building. 36 CFR 261.52(d)
- Operating or using any equipment powered by an internal combustion engine, except motor vehicles. 36 CFR 261.52 (h)
- Welding, or operating acetylene or other torch with open flame. 36 CFR 261.52(i)
- Discharging a firearm, air rifle, or gas gun, except while engaged in a lawful hunt pursuant to state, federal, or tribal law and regulations. 36 CFR 261.58(m)
- Possessing or operating motorized vehicles off National Forest System roads, including but not limited to cars, trucks, SUVs, motorcycles and ATVs, except when parking in an area devoid of vegetation within 10 feet of the roadway, and except for parking overnight in Forest Service developed campgrounds and Trailheads. 36 CFR 261.56

The fire outlook for the rest of the season remains unsettled. Meteorologists with Predictive Services at the Southwest Coordination Center say that June is characterized by periods of varying weather; warm-dry and windy-dry conditions will cycle until the monsoons arrive. The outlook for Monsoon rains is equally unsettled, with no clear pattern established. The result is that a delayed onset of the monsoon is likely. There is potential for dry lightning and wet and dry periods after the onset of the Monsoon. Higher than normal precipitation is expected to occur later in the year.

Members of the Mt. Lemmon community are encouraged to create defensible space and conduct FireWise treatments on their property. Woody materials can be deposited between 10 AM and 4 PM during the second weekend of July 2014. Alternate appointments may be made with Mt. Lemmon Fire at 520-576-1201.

July Summer Church Services Scheduled

by Larry Waldron

Summer Church Services and Bible study are set as follows:

- July 6th – There is no service due to the July 4th weekend.
- July 13th – Bill Rupert from Water Walking Ministries
- July 20th – Roy Tullgren III from the Gospel Rescue Mission
- July 27th – John Tabor from the Hands of Hope Ministry

Services are in the Mt. Lemmon Community Center meeting room each Sunday beginning at 9 AM.

Remaining Bible studies are the first and third Thursdays of July and August. Call Luann and Larry Waldron (576-1568) for the correct time and place. The study of Philippians is meant to be casual and relaxed with a light snack. Everyone is welcome so mark your calendar, and we look forward to worshipping with you.

Exciting Events Happen for MLWC

by Linda Mulay, president

The ninth annual Mt. Lemmon Cabin Tour, sponsored by the MLWC, was held June 7th, 2014. Many thanks and kudos to Sally Crawford for her leadership and the five generous cabin owners for sharing their special Mt. Lemmon treasures. Mickie and Paul Gelsinger, Patsy and Tom Riley, Rita and Bob McGill, Julie Harding and Ed Curran, and Robin Kirk and Whitey Lightner were such gracious hosts. After the cabin tours, Mickie and Paul provided their beautiful deck and spacious mountain home for over 77 Lemmonites who enjoyed the afternoon. This annual event is only open to MLWC members, so if you'd like to participate in the future, we'll be happy to sign you up as a new member!

When Fire Chief Randy Ogden spoke to the MLWC in September, 2013, and told of the need for new volunteer radios, the club voted to raise money to help with the cost. During the ensuing months, members donated various hand-crocheted items, one a beautiful hand-made quilt, and many members also gave monetary donations.

In January of 2014, it became obvious that specialty radios were necessary for the volunteer responders to provide the type of services required on Mt. Lemmon. Because emergency first responders changed radio systems throughout Pima County, the new trunked (800MHz) radio system eliminated the fire district's ability to communicate with its volunteers, but to provide new radios was cost-prohibitive for the district. With the help of the MLWC and the Long Realty Cares Foundation, the district is able to purchase seven Kenwood UHF radios to enable the Mt. Lemmon firefighters and paramedics to communicate with the volunteers and monitor all emergency dispatches.

One of our members, Laura Mance, applied for a grant through the Long Realty Cares Foundation, and MLWC was awarded a \$2000 grant toward our campaign to purchase the radios. Because we were able to utilize the umbrella of the 501c3 status of the GFWC-AZ state organization, we could qualify for the generous grant. We could not have achieved this without the assistance of GFWC-AZ. The seven radios have been ordered and will be delivered in the near future. The MLWC members are grateful for the efforts of GFWC-AZ and the Long Realty Cares Foundation for its generous help for the Mt. Lemmon Fire District, its volunteers and the Mt. Lemmon community.

The next MLWC meeting is scheduled for July 19th at the MLCC at 1:00 PM. After the meeting, a presentation by Elissa Fazio of the Hummingbird Monitoring Network will enlighten members and guests about this science-based, non-profit organization dedicated to the conservation of hummingbird diversity and abundance throughout the Americas, especially on Mt. Lemmon. These folks monitor hummingbirds, conduct research, educate the public and restore hummingbird habitat. Fascinating stuff! We're fortunate to have Ms. Fazio with us on the 19th. See you then.



It's Bunko Time Again!

Linda Mulay



Don't forget to mark your calendar and plan to enjoy another fun evening of Bunko on Saturday, July 12th, at 6:30 at the MLCC. Bring a snack to share and beverage of your choice. Please call Linda Mulay at 576-1417 if you have questions. See you there!

Monsoon Madness Arrives

by Michael Stanley

Summer is upon us as the monsoon officially began June 15th, and on the 17th we received .42" of rain and a good amount of hail. I know all of us are continuing to do our rain dances because we need several monsoon storms to bring us out of the drought conditions we are experiencing. The Carter Creek crossing at the school has been dry for the last 2 weeks, and our springs have been dropping each week; when the rains come, it will take a few inches of precipitation to bring up the creek flow and reach the springs. We are doing okay on the water supply, but remember to conserve water when you are able.

I say our supply is holding, but there have been two major leaks at customers' cabins due to meters being left on. The first one was a 60,000 gallon leak. The owner loaned the cabin to friends who left the meter on when they left. This leak was found during the last meter read. The owner was surprised the meter was left on. The second was a 30,000 gallon leak in a cabin's automatic irrigation system. Again the meter was left on when the owners went back to Tucson. Reuben found this leak while doing our weekly master meter reading. Both of these leaks ran about 5 gallons per minute. A 5 gallon per minute leak will run 300 gallons per hour and 7,200 gallons per day or 216,000 gallons per month! The Water District's tiered rate system charges \$20 per 1,000 gallons after the first 20,000 gallons of usage. The cost of the 60,000 gallon leak is above \$1,000, with the 30,000 gallon leak at somewhere around \$500. Our problem is the replacement of the lost water during low spring flows because our springs are flowing only 10 gallons per minute and dropping every week. Loss of this or any magnitude impacts all of us. If we do not receive rain by the 4th of July we will need to incorporate our curtailment plan.

We make every attempt to find leaks quickly and get them shut off to prevent water loss. Sometimes we are not able to find these leaks, and major water loss occurs. The customer is responsible for all of the water that goes through the meter regardless if it is legitimate usage or loss. I know I have said this in every Echoes, **"PLEASE SHUT OFF YOUR WATER AT THE METER EVERY TIME YOU LEAVE!"** So, **please** shut the water off at your meter. You can avoid a \$300 to \$1,200 or more water bill and not lose our precious resource. I will contact everyone if there is a need to start curtailment procedures within the next month. Remember to think rain!

I climb up to a high mountain meadow,
a pleasant aerie cool and verdant that
I first visited as a young girl so long ago.

I lie down among tall ferns and deep grass.
Scents sweetly mingle with sharp pine tang.
Overhead a parade of dizzying clouds pass

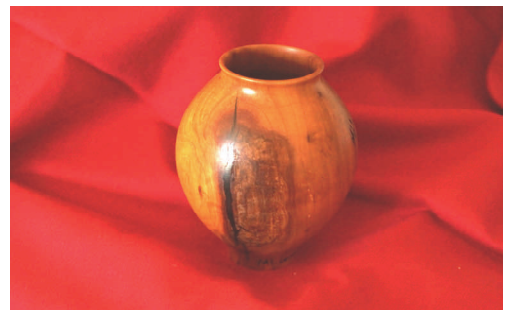
above the forest of stately green spires.
I sink into a lush nest of fiddlehead ferns,
into green hopes and peaceful desires.

In my mind its beauty does not cease.
I often waft myself up to my meadow,
sigh, close my eyes and rediscover peace.

by Mary Ellen Barnes

Alpine Inn Memories

Did you ever sit on the patio at the Alpine Inn and enjoy the Sunday afternoon music? Perhaps you noticed the beautiful apple tree that graced the edge of that very patio? While the tree and the patio are gone, the memory has been captured in this sculpture by **Bob Rice**. Tickets for a drawing are available through the Woman's Club all summer. The sculpture can be yours with the winning ticket!



Mount Lemmon Listserv

Receive timely information from the Mt. Lemmon community by signing up on the **Mt. Lemmon Listserv**. Send an email to listserv at Announcements@mtlemmonhoa.org with your name and email address. We will sign you up and you will receive instructions on how to use the listserv.

Important Numbers:

Road Conditions 547-7510
 Post Office 576-1427
 Trico Electric 744-2944
 Water District 576-1538
 Amerigas 887-7120
 Arizona Propane 750-9116



PROUDLY SERVING ARIZONA FOR 42 YEARS

Arizona Propane

GAS PRODUCTS SALES & SERVICE

- ✓ FAMILY OWNED
- ✓ COMPETITIVE PRICING
- ✓ NO HIDDEN FEES
- ✓ UNBEATABLE SERVICE
- ✓ RV COMPATIBLE
- ✓ RESIDENTIAL & COMMERCIAL

ENJOY A
MOUNTAIN
OF SAVINGS!

520-750-9116**APRILK@ARIZONAPROPANE.COM**

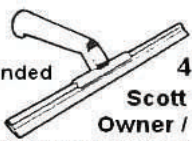
COMMERCIAL SALES
TIM 520-444-2576

TIM@ARIZONAPROPANE.COM**TRUELOVE WINDOW CLEANING**

(formerly CRYSTAL VISION)

Professional and Friendly

Licensed, Bonded and Insured



(520)

465-7195

Scott Truelove

Owner / Operator

www.truelovewindowcleaning.com

M. C. Harmon Construction, LLC
 General Contractor

520-576-1546

Building on Mt. Lemmon since 1979

Specializing in Custom Log Cabins

General Plumbing Electrical Roofing
 ROC 219566 ROC 221184 ROC 221185 ROC 221117

Matthew C. Harmon Christopher J. Harmon

Mount Lemmon Community Center

The Mt. Lemmon Community Center (MLCC) is part of Pima County's Natural Resources Parks Recreation (NRPR) department. The Mt. Lemmon Community Center, Inc. is organized exclusively for charitable, social and educational purposes. The facility is dependent upon local volunteers to staff and support the visitor's center. Our mission is to welcome all who visit the facility and promote Summerhaven, Mt. Lemmon and Pima County Arizona.

The MLCC board would like to encourage local social & charitable use of the community center. The community center can be used at no charge, with approval, for our local events.

Reservations to use the Community Center can be made by calling Kelly Cheeseman at the Pima County Parks and Recreation phone number: 520.877.6155 or E-mail Kelly.Cheeseman@pima.gov

(520) 576-1333
 (520) 576-1300 PHONE/FAX

**MOUNT LEMMON REALTY, INC.**

ROBERT ZIMMERMAN
 Broker
bobzim@mindspring.com

P.O. BOX 1
 MT. LEMMON, AZ 85619-0751
MtLemmonRealty.com

COLORADO LOG ENTERPRISES LLC

Blasting-Staining-Chinking-Restoration
 Preservation-All Log Specific Maintenance

ZERO FAILURE CERTIFIED

Cole Pavy

303-249-9299

Tony Christensen

303-915-3509

www.coloradologenterprises.com**Complete Rain Water Harvesting Systems****Southern Arizona Rain Gutters, Inc.**

Commercial / Residential
 ROC #210367

John Eisele

Office 299-RAIN (7246) Cell 520-977-0561

john@sargutters.com

1627 N. Stone Ave. Tucson AZ 85705
www.southernarizonaraingutters.com

GRIFFITH BUILDING

OVER 30 YRS EXPERIENCE

DESIGNING - BUILDING

REMODELING AND REPAIRING

VACATION HOMES & CABINS

GARY 256-9816 LIC # 062647

On Mt. Lemmon & in Tucson
 520.906.5985
s.pearce@comcast.net

Susan (Susie)
 Pearce

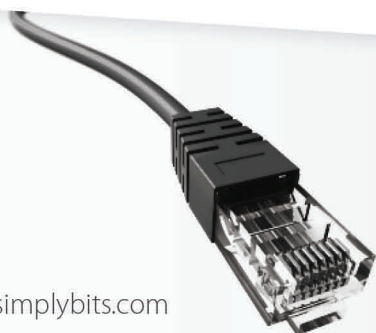
Pilates Instructor
 Body Conditioning &
 Structural Alignment
 Ron Fletcher Method





Now in Summerhaven Simply Bits Internet

Residential Plans: Basic, Popular, Premium



www.simplybits.com

For more information
Call 520.547.7445
or email Lemmon@simplybits.com

5225 N. Sabino Canyon Rd, Tucson, AZ 85750 | 520.547.7445

ATTENTION TO DETAIL

520-302-1443

We come to you!
Wash to Showroom detail
Head light restoration
Interior Shampooing
Engine steam cleaning
Paint restoration
Gift Certificates available



25 years experience
Professional Service
Satisfaction Guaranteed
Scheduling available

Fine Art Photography

IMAGES BY MELBA

Melba Cope 520-744-5095

epocphoto@comcast.net

My photos can be purchased at
The Living Rainbow

Cabin cleaning made easy

Next day, same day service available
Open/close cleaning jobs bid on site
Free estimates, flexible hours



Debbie Weatherly

520-203-3740

Email: Debbie.weatherly@gmail.com



Restaurant News

Sawmill Run Summer Hours

Monday thru Thursday 11:00 AM - 5:00 PM
Friday 11:00 AM - 8:00 PM
Saturday 9:00 AM - 8:00 PM
Sunday 9:00 AM - 6:00 PM

Look forward to new salads and sandwiches added to our menu and new desserts.

Hope to see you this summer!

Stop in at Mt. Lemmon Realty office to receive your
2014-2015 VIP Discount card.

The Iron Door's Summer Dinner

Dates Scheduled

(Friday evenings)

**July 18th,
August 8th and 29th**

Reservations are recommended.

Please email

Mtlemonpielady@gmail.com

or call 576-1321

The Cookie Cabin

Hours:

Monday thru Friday 10:00 - 5:00 PM
Saturday and Sunday 10:00—5:00 PM

Delighting customers with:

Pizza, Chili, and Giant Cookies

Ski Valley News

- On Saturdays and Sundays, a free Skyride with breakfast from 9:30 AM – 11:00 AM.
- On Thursdays, each lunch ticket is given a two-for-the-price-of-one Skyride coupon.

MLHOA

The Mt. Lemmon Homeowner's Association (MLHOA) was formed in 1969 to protect the welfare of the Mt. Lemmon community and to be involved in all aspects of its improvement. The concerns of the organization are not limited to private property owners. Full membership with voting rights, is accorded to private owners and leased land holders upon payment of yearly dues. Being organized, having a legal fund and having active **LOCAL** voice participation enables the Association to accomplish most of its goals. Pima County has said the MLHOA is the strongest and most respected homeowner's organization in the entire county. Dues are \$35 per year payable in February. Renters and Friends of the Mountain may obtain membership for \$30 a year. The Annual Dinner and Meeting is held each year on the first Tuesday after taxes. To join the Mt. Lemmon Homeowner's Association, send a check to Box 699, Mt. Lemmon, AZ 85619.

The most visible product of the MLHOA is the **ECHOES**, a newsletter published ten times a year. The Association organizes social events such as potlucks, pancake breakfasts, ice cream socials and raffles, enabling owners to mingle. Members of the Board are: Jerry Taylor, president; Bonnie Lohman, vice-president; Jennifer Rollins, treasurer; Carrie Reitz, secretary; Mickie Gelsinger; John Mulay; Pete Krauss; Debbie Fagan; Glen Schager; Michael Stanley; Mike Bernstein; Bill Piatkiewicz; Jenni Avram; and Carol Niehoff.

Advertising in the Echoes is \$10 per issue for a proportional business card and \$50 per issue for a 1/4 page ad.

IMUS WILKINSON
INVESTMENT MANAGEMENT

Gary Imus Eb Wilkinson
Managing Partners

GaryImus@ImusWilkinson.com
Eb.Wilkinson@ImusWilkinson.com
1820 E. River Road, Suite 104
Tucson, Arizona 85718

Office: (520) 777-1911
Toll Free: (877) 813-4985
Facsimile: (520) 579-4011

The Living Rainbow, Inc

P.O. Box 753
Mt. Lemmon, AZ 85619
(520) 576-1519
rainbow@mindspring.com
fax (520) 298-4770
Debbie Fagan

Windchimes and Gifts since 1979
Celebrating our 35+ year in business

ONE STOP AUTOMOTIVE (520) 571-1811
www.onestopautorepairtucson.com

ONE STOP AUTOMOTIVE
ASE
Randall Miller
Owner
1545 S. Graycroft Rd
Tucson, AZ 85711

Steve Littler
RANCHO LINDA VISTA
Amy Buttery
ARIZONA'S OLDEST GUEST RANCH
ORACLE, ARIZONA

P.O. Box # 32683 Tucson, AZ 85751

Etab.



"Your Dependable Truckers of Tucson"
www.deserttrucking.com

John "J.J." Johnson
Cell (520) 449-8800
Fax (520) 690-0011

Transfers
Super 16 & 18
Semi's & Bells
.10 & 12 Wheel Dumps

Mt. Lemmon
Guest Room Rentals
520-576-9159
Susan & Mark Shomo
12780 N. Phoenix, Summerhaven

Elegant Excess
Specializing in Beaded Badge Holders for Nurses, Teachers etc.
By Carrie Reitz
Phone 520-404-6772
See at: elegantexcess.com

WELLS FARGO ADVISORS
Together we'll go far

Steve Hall, JD
Senior VP - Investments
7630 North Oracle Road
Tucson, AZ 85704
520-229-3020

Investment and Insurance Products: ▶ NOT FDIC Insured ▶ NO Bank Guarantee ▶ MAY Lose Value

Wells Fargo Advisors, LLC, Member SIPC, is a registered broker-dealer and a separate non-bank affiliate of Wells Fargo & Company.
©2009 Wells Fargo Advisors, LLC. All rights reserved. 0409-1260 [74124-v1]

Sky Island Construction
BUILDING ON MT. LEMMON
GREG FERGUSON - PRESIDENT
Office: 471.6322
Fax: 751.7918
Lic# 163522
SKYISLANDCABINS@AOL.COM
LICENSED, BONDED, INSURED

(520) 576-1333
(520) 576-1334 Res
(520) 576-1300 PHONE/FAX

MOUNT LEMMON REALTY, INC.

FRANCES ZIMMERMAN
Sales Assoc./Property Mngt.
P.O. BOX 1
Mt. Lemmon, AZ 85619-0751

George R. Reitz
Realtor
Million Dollar Producer

Home/office: (520) 722-1265
Cell Phone: (520) 444-1439
Fax: (520) 733-1398
greitz2@cox.net

REAL ESTATE MARKETING PROFESSIONAL
2450 North Pantano Rd.
Tucson, Arizona 85715

(520) 576-1333
(520) 576-1300 PHONE/FAX
(520) 861-0161 Cell

MOUNT LEMMON REALTY, INC.

JENNIFER L. AVRAM
Sales Assoc./Property Mngt
jennimir@mindspring.com

P.O. BOX 1
Mt. Lemmon, AZ 85619
mtlemmonrealty.com

MADSON, BROWN & ASSOC., LTD

EDWARD A. MADSON, SRA
Certified Residential Real Estate Appraiser

3131 N. Country Club Rd Suite 203
Tucson, Az 85716

(520) 318-6000
FAX (520) 318-6006
edward@madsonbrown.com

Cozzetti Construction, Inc.

Dennis Cozzetti Owner
3849 E. Caliente Soto
Tucson AZ 85716

520-323-7700 520-576-9022
520-965-1648 - cell denniscozzetti@msn.com

AZ ROC 128028, 189210, 190420, 207012

EL RANCHO ENCANTO
ASSISTED LIVING
EXTRAORDINARY HOMES. SUPERIOR CARE

Pam Haskell
Phone: 520-885-0004
Fax: 520-885-7077
Cell: 520-245-8292

5705 & 5803 E Ft. Lowell
Tucson, AZ 85712
pamhaskell@elranchocanto.com
www.elranchocanto.com

**Mt. Lemmon Homeowner's Assoc.
P.O. Box 699
Mt. Lemmon, AZ 85619**

PRST STD
U.S. Postage
PAID
Tucson, AZ
Permit No. 26

Parting Shots



Jasmine Thrasher