

## Activities Calendar

Saturday, May 3rd  
Cheatgrass Eradication  
Day

Saturday, May 3rd  
Community Church  
Meeting  
4 PM @ MLCC

Saturday, May 17th  
Woman's Clug Mtg  
1:00pm @ MLCC

Saturday May 17th  
MLWD meeting  
8:00am @ School  
House

Saturday May 17th  
MLHOA meeting  
10:00am @ MLCC

Sunday May 25 th  
Memorial Day Potluck  
12:00pm @ MLFD

Saturday June 14th  
Woman's club tea

Sunday, June 22nd  
Artisan Fair  
@MLCC

Friday July 4th  
Parade  
12:00pm

## Homeowners Board

*from President Carrie Reitz*

Well, friends, I guess spring has finally come to the mountain. The milder than usual daytime temperatures have been accompanied by winds that make the mild seem cold by comparison. Not to worry! The summertime warmth is on its way. Since Memorial Day is the traditional time when families reopen their cabins for the summer, we celebrate with a Memorial Day Potluck. This year, the Memorial Day Potluck will be at the Fire Station on Sunday, May 25th beginning at 12:00 noon. The MLHOA will supply sliced ham, turkey, table service, water, soft drinks, & coffee. Please bring salads, desserts, breads and specialty dishes. There is no charge for the meal but donations for the Mt. Lemmon Fire Dept. will be accepted. For those concerned, if checks are written, those donations will be tax deductible. These donations go for personnel education and needs at the firehouse not covered by capital spending. Please attend! This is a great way to begin the summer; seeing old friends and new enemies. (Just kiddin') See you there!!



As I'm sure you already know but it bears repeating, we have a great need for volunteers to host the lobby of the new MLCC on Friday, Saturday and Sunday. Chuck Hanks is employed part time by the Pima County to manage the Community Center. He can't be there all the time. We need to step up to the plate and volunteer some time. Chuck has a sign-up sheet in the lobby and it is almost empty. A few hours per person is all it will take and it doesn't have to be just ladies. The men can be good at this too. Please donate a few hours out of your relaxing time to staff our community center. You may not have answers for all the questions from the public right away but you know the mountain better than most and if you don't, this is a good way to learn while teaching. Believe me, "Where's the bathroom" won't be the only question asked. PLEASE, SIGN UP NOW!

On April 22nd, we had our annual MLHOA membership dinner. For those of you who missed it, the food was excellent and the speakers were brief but informative. There were about 165 in attendance. We thank all of our guests for joining us. Our speakers were; Supervisor Ray Carroll, MLFD Fire Chief Dean Barnella, Sgt. Eric Thompson of PCSO, Water Board President John Mulay, President and CEO of TRICO, Mr. Mark Schwirtz, MLCC Board member John Lewis, and Representative for the U.S. Forest Service, Stan Helin. We also were introduced to our new deputy on the mountain, Deputy Luis Palma. Welcome to the mountain. Stan Helin the new Forest Ranger for the mountain introduced Sherry Tune as the Deputy Ranger for the mountain. I get the impression from talking to them that they're coming to the table with a much more public oriented approach to some of the mountain issues. They have promised to keep us updated with some ECHOES articles. A big thanks also goes to the Summerhaven businesses and friends for their door prize donations.

See you on the mountain.

## Supervisor Ray Carroll receiving an Award

### Tasting the Sky Islands Awards Banquet & Auction

TUCSON, ARIZONA, April 23, 2008—Sky Island Alliance celebrates its 2<sup>nd</sup> Annual People & Places Awards Banquet & Auction on Friday, May 16, 2008 at 7:30 p.m. at the Stillwell House in downtown Tucson. They will be honoring those in the community who are diligently working to preserve and restore wildlife and wildlands. Tickets are \$50.00 per person and \$40.00 per person for members.

This years awards honorees:

**Ray Carroll, Pima County Board of Supervisors, District 4:** Public Service Award – given to an elected or appointed official with outstanding leadership in natural resource policy implementation throughout the Sky Island Region.

**Summit Hut, Locally-owned outdoor gear and clothing retailer:** Business Conservation Award - given to a business whose practices, policies, or support significantly benefits the wildlands of the Sky Islands.

**Dave Parsons, The Rewilding Institute:** Mike Seidman Memorial Award – given to an individual in recognition of outstanding contributions to land and wildlife.

For tickets, contact Moniqua Lane, Development Associate of Sky Island Alliance at (520) 624-7080, ext. 17 or visit the website at <http://www.skyislandalliance.org>.

## Community Church

An organizational meeting for summer Community Church services is planned for Saturday, May 3<sup>rd</sup> at 4 PM in the Mt. Lemmon Community Center.

Historical Mt. Lemmon Church services were non-denominational Christian services. Since the 1970's, services have been held in a variety of locations in Summerhaven. Pima County has given approval for the use of the Mt. Lemmon Community Center for Sunday services during June, July and August at 9 AM. Please consider attending this important meeting; your support is needed and appreciated.

If you are unable to attend the meeting but are willing to participate please let me know and you will be added to our list. Please pass this information onto friends and neighbors who don't have email. Lawaldron2@msn.com Refreshments will be provided.



## MEMORIAL DAY COMMUNITY POT LUCK



MLHOA will furnish sliced ham and turkey and soft drinks. Residents please bring a dish to share. Come and enjoy the company of your mountain neighbors on Sunday May 25th 12:00pm (Noon) at the Mt. Lemmon Fire Department.

## 2008 Mt Lemmon Survey Results

*by Mark Shemo*

Thanks to everyone who responded to the MLHOA survey. The survey was attached to the February 2008 Echoes and sent to MLHOA members and potential members. The information collected will help the MLHOA board in our discussions and direction to better represent the MLHOA members.

- 101 - Surveys collected
- 83 - Have a finished house
- 5 - Will finish a house soon
- 12 - House is their primary residence

- 86 - In favor of more business & services
- 13 - Not in favor of more business & services

### The # 1 Comment

- 60 - Would like to see a full restaurant / evenings / breakfast / drinks (1- No bar)

### More Comments

- 13 - More lodging
- 5 - Trash / Litter
- 7 - Parking
- 12 - Do we have water for more growth?
- 6 - Road repairs / Road improvements
- 5 - Limit business growth
- 6 - Building city center taking too long
- 8 - Thanks to MLHOA for the Echoes and our work
- 5 - Pedestrian walkway - boardwalk along main road in Summerhaven

### Other Comments (less than 5)

- Gas Station / Removing dead and downed trees / Plant more trees / Hardware store /
- Fire Breaks / More weekend entertainment / More shops / Traffic / Gym / Taxes /
- Light pollution / Community center problems (Ice - Snow) / Electric costs / Water costs / Water filling station / Church services / More public restrooms / Charge user fees to benefit this area

## Mailing Label

We are trying something new, so please be patient while we work out the bugs. Your mailing label now contains a forth line which tells you when your subscription expires. If your "Paid Until" date has past, this may be your last issue. If you don't agree with our records you need to call Jerry Sparks at (722-9699). If the label date has past and you wish to continue receiving the ECHOES, Please update your subscription by mailing a check to Box 699, Mt Lemmon, AZ 85619.



Linda Mulay with her summit award



Supervisor Ray Carroll and his wife Ann



Linda Currin and Linda Benziger



Carrie Reitz and Jack Foster in the buffet line



George Davies and Trico's Mark Schwirtz

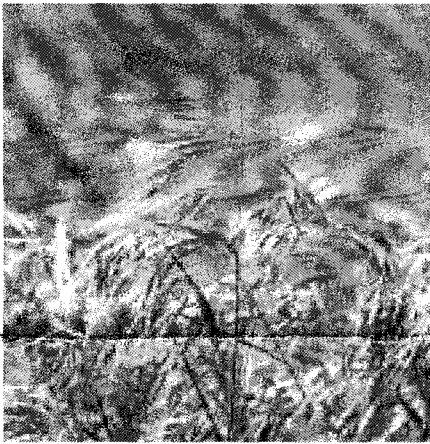




## Trees for Mt Lemmon

by Linda Benziger

The Board of Trees for Mt. Lemmon welcomes all of our new neighbors to the mountain! We look forward to meeting you and working with you as you discover the beauty and uniqueness of our forest habitat. We also hope you join our efforts to aid in the recovery of the forest following the 2003 Aspen wildfire. There are many aspects to this recovery, and Trees for Mt. Lemmon has worked with a number of entities on the mountain as we all take this journey together. Through many interactive learning and teaching sessions with local, state, educational and federal agencies, we have instituted numerous projects to re-vegetate as well as work to protect the delicate natural balance that is unique to this mountain. Here is just some of the important work we are undertaking:



### Cheatgrass Eradication

**Saturday, May 3<sup>rd</sup>** will be the first in a series of "Cheatgrass Pull" days on the mountain. The introduction begins at 9:00 am in the parking lot across from the Community Center. The pull will start at 10:00 am. Please check our website at [www.treesformtlemon.net](http://www.treesformtlemon.net) for identification and further information. Many areas on the mountain are harboring this invasive, highly flammable grass, so please join our efforts to lessen the fire danger by eradicating as much of the cheatgrass as we can.

### Erosion Control

One of our goals is to assist the community in replanting the burned areas surrounding our village. Many folks have asked us for a list of appropriate plants to replace what was lost in the Aspen fire. Native plants will not only add beauty to the areas that lost much or all of its vegetation, but at the same time help to curb the continuing erosion of the mountain floor since the fire. We again offer this comprehensive list of plants recommended for their high probability of survival as a native plant in our climate. You will find even more plants listed on our website. **Keep in mind, it is important to check our website for the botanical names so you purchase the species that is native to Mt. Lemmon.**

**Trees:** White fir, Corkbark fir, Rocky Mtn maple, Big Tooth maple, Box elder, Arizona alder, Arizona madrone, Red Osier dogwood, Alligator juniper, Ponderosa pine, Southwestern White pine, Quaking aspen, Douglas fir, Gambel oak, Silver Leaf oak, New Mexican locust

**Shrubs:** Pringle manzanita, Fendler ceanothus, Mountain spray, Arizona honeysuckle, Gooseberry, New Mexico raspberry, Arizona raspberry, Coyote or Narrowleaf willow, Snowberry

**Wildflowers:** Western yarrow, Golden columbine, Desert marigold, Indian paintbrush, Cosmos, Geranium, Richardsons geranium, Blue flax, Ribbon four-o'clock, Tufted four-o'clock, Penstemon, Primrose, Arizona rose, Wrights goldenrod, Common snowberry, Mountain marigold, Licorice marigold, Meadow rue, Showy goldeneye, Canadian violet

**Legumes:** Dalea, Indigo bush, Lotus, Lupine, White sweet clover, Bean, American vetch

**Grasses:** Mountain brome, Orchard grass, Tufted hairgrass, Longleaf squirreltail, Stink grass, Arizona fescue, Bedstraw, Junegrass, Muhly, Bulb panicum, Fowl blue grass, Bottlebrush, Squirreltail

### Seed and Plant Sources:

#### Trees & Shrubs:

Flagstaff Native Plant & Seed 928-773-9406  
Warners Nursery & Landscaping (Flagstaff)  
928-774-1983  
[20% off to Mt. Lemmon customers]

While the above nurseries do not deliver, homeowners could join forces to order a number of larger trees and get together on the shipping charges.

#### Shrubs:

Desert Survivors (Tucson) 791-9309  
Arizona Revegetation & Monitoring Co. (Elgin)  
520-455-5780  
Wildlands Restoration (Tucson) 882-0969  
Native Seeds/SEARCH (Tucson) 622-5561

Our website also lists invasive species to avoid planting on Mt. Lemmon

### LemmonFest 2008

T4ML is again sponsoring LemmonFest at this year's 4<sup>th</sup> of July parade! Stop by for free live music, Eegees and cotton candy, as well as sandwiches and drinks for purchase. We'll also have games for the kids, and a fun raffle or two! Any proceeds will help fund the many important projects we are working on.

by Larry Waldron

*Echoes from the Past; a historical perspective:*

The attached article is from the September 1977 Echoes. The Mt. Lemmon Community Center now stands at the site of the former Inn. I have heard many great stories about the Inn; I sure wish I could have seen it.

Although the character and charisma of the Inn cannot be replaced, we are hopeful the Mt. Lemmon Community Center can provide the needed location for entertainment, potluck dinners and mountain gatherings.

MT. LEMMON INN

Although all of us who live in the valley and on the mountain sadly know, we have many members who live in far away states who do not about the fire in the early morning hours of April 29, 1977 that burned the Mt. Lemmon Sawmill & Co. Restaurant to the ground. The original lodge was built in 1945 as a restaurant and country store by Tony Zimmerman with the addition of a two-story structure used as a hotel built in the early '50s. The Inn was the second commercial building in Mt. Lemmon to burn down within the last ten years - the 50 year old Ponderosa Lodge was destroyed in 1970.

Only the stone fireplaces were left, but it is hoped that the Inn - which was Mt. Lemmon to many folk in the valley - will arise like a Phoenix from the ashes and be going full blast again. Not only was it the entertainment center for potluck dinners and other mountain gatherings, but it was also the site for gatherings, in the summer, of the Tucson Ecumenical Council church services for as many of the 300 mountain residents who wished to attend.

In the meantime, the 'Chuck Wagon', just across the street from the Inn site, is being run by Fran Hayes and Bob Zimmerman and there you can get just about the best Patty Melts, hamburgers and accompanying 'goodies' as can be found anywhere in Pima County. To quote the Unsinkable Molly Brown "We ain't down yet!".

If you would like to know more about the history of Mt. Lemmon visit the Mt. Lemmon Community Center and browse issues of the "Mt. Lemmon Echoes", "High Trails" and "The Mountain Echo" newsletters for your viewing.

*Mt. Lemmon Community Center Update:*

The Mt. Lemmon Community Center corporation has received a 501(c)3 status from the IRS. This was a major hurdle in finalizing a management agreement with Pima County. Equally important, we can now receive tax-deductible donations for educational programs, capital improvements and operational expenses. The corporation is identified as a public charity. We owe John Lewis, our treasurer, a tremendous "thank you" for making this happen in such a short time.

Significant items from the MLCC board meeting on March 24<sup>th</sup>:

1. A letter was sent to Pima County discussing safety concerns and recommended improvements for the community center. New signage is needed.
2. No further permanent art will be placed in the building without involving the Tucson Pima Arts Council (with Pima County approval). Educational or public information items (such as maps) or temporary art shows are exempt from this motion; these must be approved by the board.
3. We need several volunteers willing to serve on the education-events committee, this also includes art shows. This committee is responsible for coordinating educational programs, assisting with logistical issues and working with local artisans. Please make your interest known to any of the board members. In addition we are seeking volunteers for the visitor's center and other functioning committees (arts, volunteering and fundraising).
4. Starting the first Sunday in June and through the end of August, Church Services are scheduled between 9 and 10 am.

Please contact Larry Waldron at 743-3034 or lawaldron2@msn.com.

## Greetings from the Mt. Lemmon Community Center Board

*by Lindy Brigham*

We wish to extend our thanks to all of you who have been volunteering at the Center and to everyone who has made use of the Center for various functions. We all take pride in the valuable resource that Pima County has in our community.

We are in the process of working with the County to finish the interior and develop long-term maintenance and improvement strategies. To this end, we would like to extend an invitation to the community to help the Board with these efforts.

There are several committees that have been formed that could use your help. Please consider your strengths and where you would like to assist.

**Fund Raising:** The chairperson for this committee, Fran Zimmerman, would like volunteers to help with generating fundraising ideas and hosting the various functions. Please contact Fran at email: [franzim@mindspring.com](mailto:franzim@mindspring.com)

**Information Center Volunteers:** Last summer, members of the Mt. Lemmon Women's Club and their spouses provided information to the visitors who came up to enjoy our ideal climate. Linda Mulay could use help coordinating the many generous offers to help staff the visitor center. Please contact Linda at 327-4615, 576-1417 or email: [ljmulay@msn.com](mailto:ljmulay@msn.com)

**Education-Events Committee:** We are needing committee members for this very important function. This committee provides information to the community (both local and visitor) about the fascinating natural, historical, and cultural character of our incredible resource that is Mt. Lemmon. This committee will also coordinate education and special events that community organizations and individuals would like to develop in the center. Please contact Larry Waldron at 743-3034 or email: [lawaldron2@msn.com](mailto:lawaldron2@msn.com)

### **VOLUNTEERS NEEDED**

The Mt. Lemmon Community information center is open 10:00am to 4:00pm Friday, Saturday and Sunday.

We need your help for one hour or more whenever you can and as often as you can. The sign up book is in the Community Center. You can stop by or call 576-9614 during open hours. Contact me for any question: Linda Mulay 327-4615 or 576-1417

## IF YOU WERE LIKE A HUMMING BIRD—

*by Barbara Welsh*



If you were like a hummingbird you would have a temperature of 750 degrees F. You would still need carbohydrates, proteins, fats, vitamins and minerals. In order to get this you would burn 155,000 calories every 12 hours just to live.

The hummingbird brain is the size of a grain of rice yet he can navigate flights of thousands of miles each year. Their wings move from the shoulder in a figure eight motion and they can fly forward, backward, and upside down. The tongue is very long and tucks back inside the head cavity when they are not drinking nectar or catching bugs. Most birds see color and the hummingbird has excellent eyesight much like a hawk or vulture.

The male hummer is the playboy of the bird world; he is mainly interested in eating, defending his food source and finding females. The male is very aggressive in defending a feeder although I have seen them sharing right at sunset or very early in the morning. Meanwhile the female hummer builds tiny nests of moss, lichens, and other materials in her area. The most important part is the spider webs that hold the nest together and allow the nest to stretch as the babies grow. She does all the feeding and tending of the young. Even when the young leave the nest she will feed them for three or four days.

There are 336 known species in the world in the Western hemisphere. Most are within 10 degrees of the equator. About half are in Ecuador and Brazil. West of the Mississippi there are 17 species and 4 species in Canada. The Rufous Hummingbird that we see on the mountain breeds up in Alaska and stop by for about a month or 6 weeks on their way to Mexico and South America. Only the Ruby throat is common east of the Mississippi.

If you choose to feed the Humming birds the formula is one cup of sugar (white sugar) to four cups of water. Boil the mixture about 6 minutes on the mountain. You do not need to add color, as they will find the food without it. Enjoy watching them and realize how truly amazing these tiny creatures are.

*Fine Art Photography*

**Images by Melba**

Melba Cope, 520-744-5095  
[epocphoto@comcast.com](mailto:epocphoto@comcast.com)

My photos can be purchased at  
The Living Rainbow

*by President Linda Mulay*

*327-4615 or 576-1417*

The Southern District conference was attended by Linda Mulay, Ginny Durham, and Fran Zimmerman. Our club was recognized and given certificates of achievement for: Special Projects/Leadership: Resource Conservation: Conservation/Beautification: Public Affairs/Community Safety: Education/Literacy.

Our scrapbook took first place!!! Thank-you to the members that helped make that happen. Tina Hanks fabric art was a first place winner!! Thank-you to Jeanne Mayer and Marty Cobb for their entries. They both should have won.

Our April speaker was Sherry Tune, Deputy District Ranger. She is interested in the mountain and wants to keep open communication with us.

We had election of officers:

President: Ginny Durham

1<sup>st</sup> V.P.: Fran Zimmerman

2nd V.P.: Tina Hanks

Secretary: Kay Slocum

Treasurer: Pam Winsten

Linda Mulay will remain on the Board as advisor.

### *Summer activities*

Linda Mulay has set up two tours of the Mt Lemmon observatories for our members.

Sally Crawford has two cabin tours planned.

Membership tea is June 14th, chaired by Fran Zimmerman and Luann Waldron

Karen Shunk is organizing the July 4th parade.

Please send in your membership forms ASAP! Our next meeting is Saturday May 17th 1:00pm at the Mt Lemmon Community Center.

We will have installation of new officers by Luann Waldron. Come join us!!

## *For Sale Ads*

"For Sale" ads are placed on a month to month basis and are subject to space availability. Ads must be 25 words or less. MLHOA reserves the right to edit ads. A single ad may run no more than three times per calendar year. Ads are not repeated unless requested by telephone. We do not print ads for business, rentals or services for which a fee is charged. MLHOA is not responsible for the quality of the merchandise offered. Any problems with item advertised is between the buyer and the seller.



## *Kids Club*

*by Jenni Avram*

In honor of Olga Pace we are bringing back the kids club. The Woman's Club will be sponsoring it, and I (Jenni Avram -Fran & Bob Zimmermans daughter) will coordinate the activities. We will be meeting every other Saturday from 9:30 to 11:30 starting in June, the definite dates will be in the next newsletter. If you have a child or family member 3 years of age and up and would like to meet more kids on the mountain please come. We'll be doing crafts and having a good time. Please feel free to contact me jlavram1@msn.com or at Mount Lemmon Realty 576-1333.

## *MLHO*

The Mt. Lemmon Homeowners' Association (MLHO) was formed in 1969 to protect the welfare of the Mt. Lemmon community and to be involved in all aspects of its improvement. The concerns of the organization are not limited to private property owners. Full membership with voting rights, is accorded to private owners and leased land holders upon payment of yearly dues. Being organized, having a legal fund and having active **LOCAL** voice participation enables the Association to accomplish most of its goals. Pima County has said the MLHO is the strongest and most respected homeowners' organization in the entire county. Dues are \$25 per year payable in January. Renters and friends of the Mountain may obtain membership for \$20 a year. Membership fees are prorated quarterly. The Annual Dinner and Meeting is held each year on the first Tuesday after taxes. To join the Mt. Lemmon Homeowners Association in 2008; call or Email Gordon Hunter at 298-5971, 576-9608 or by Email at [gordon@hunteraz.com](mailto:gordon@hunteraz.com).

The most visible product of the MLHO is the **ECHOES**; a newsletter published eight to nine times a year. The Association organizes social events such as potlucks, pancake breakfasts, ice cream socials and raffles enabling owners to mingle while at the same time raising funds for various community causes. This group has always depended upon volunteer support and found strength in numbers. An elected board acts on behalf of and for the benefit of the membership. Board members are Carrie Reitz, President; Tom Thomas, vice-President; Bonnie Lohman, Treasurer; Jeanne Mayer, Secretary; John Mulay; Pete Krauss; Mark Shomo; Jerry Sparks, Dean Barnella; Ginny Durham; Debbie Fagan; Karen Shunk; Gary Slocum, John Lewis, Gary Scheer and Gordon Hunter(editor of the Echoes). If you have any suggestions or comments about the ECHOES send them to Gordon at the above address .

Advertising in the Echoes is \$10 per issue for 2x3 inch business card and \$50 per issue for a 1/4 page ad.