

The



Serving the Homeowners of Mt. Lemmon

"You can overlook Tucson, but you can't overlook Mt Lemmon"

*Did you happen to see the following article in the ARIZONA DAILY STAR on Monday, August 5, 2002. The Echoes asked and received permission to reprint this article from Jane Dee Hull's Office *The original title was "The Daschle Amendment: Just What We Need in Arizona"*

Start forest Thinning now by Governor Jane Hull

Several weeks ago, while nearly 500,000 acres of our state were going up in flames, I was widely criticized by certain "environmentalists" for having the audacity to point out that protecting our communities from tinder-dry forests had been hampered by appeals or other bureaucratic maneuvers. These critics, including a number of Washington politicians who have never set foot in an Arizona forest, alleged that these were partisan attacks, suggesting that those with homes and businesses near our forests put politics ahead of self-preservation.

Recently, as the facts have accumulated, an independent study revealed that 73 percent of the forest health projects in the Southwest have been appealed over the past two years. Further, the Forest Service found that virtually half of all thinning projects on federal forests have been blocked procedurally over the past two years

These facts reinforce what most Arizonans already knew: The obstructionism of some environmental extremists is putting homes, businesses, wildlife habitat, water and air quality all at great risk by preventing the protection of our forests.

After all the whining about seeking partisan advantage through the Rodeo/Chediski tragedy, many in our nation's capital were surprised recently when the nation's top Democrat, Senate Majority Leader Tom Daschle, acted immediately to allow logging projects to protect his state from wildfire. I wasn't surprised, nor were any other Arizonans who have watched our tinder-dry forests grow more dangerous while extremists block nearly 75 percent of the thinning projects proposed for our forests. No one is accusing Daschle of taking partisan advantage of the threatening forest conditions in South Dakota. Nonetheless, he's done what every state with a raging fire wished it could have

done long ago. He passed legislation exempting his state from environmental regulations and lawsuits that have prevented the thinning necessary to clean up the forests in South Dakota.

While Daschle's effort to protect the people of South Dakota from the devastation of wildfire is commendable, it would be more impressive if he would allow the rest of the Western states to enjoy the same opportunity to provide protection to our citizens, their property and our forests. Some have suggested that the South Dakota situation differs from Arizona because of that state's work developing an agreement to provide fire protection through logging projects. In fact, the same work has been going on here, too.

Communities in and around, Flagstaff, Prescott, Mount Graham and others around the state have been achieving public consensus on thinning projects for years, only to have extremist groups file last minute appeals halting the process and leaving those communities in peril. In Arizona, the fire season is ending, and we will soon have a short period of time to safely start forest thinning to bring a measure of security to the forests. Areas across Northern Arizona need to be thinned, and the burned trees in the Rodeo/Chediski area need to be salvaged before they become diseased and the source of further environmental harm. Likewise, acres of trees on Mount Graham have died from beetle infestation and pose a grave danger to public safety for area communities.

Yet the Forest Service has refused, to thin these trees - even though independent experts have recommended they do so - because it fears a lawsuit if it acts.

It is simply not acceptable to take this risk with our communities. Numerous environmental leaders and groups have come forward to support commercially viable forest health projects. They realize, despite extremist statements to the contrary, that it is possible to help protect our forests and provide forest products jobs at the same time. It is imperative that those accountable for the public safety in fire-threatened states across the West, including Arizona, be given the same tools by Congress that Daschle has deftly provided to the people of South Dakota. Every day that passes is another day closer to the next fire season, and projects to protect our communities must begin now.

Now Is The Time To Act

*By Fran Zimmerman
For Ross Quigley, President*

I feel several truths must be abundantly clear to all Mount Lemmon folks. The first is that our forests are in dire need of help that now best would come from human involvement. The second is our forest, including our homes, will be lost if we do nothing. The third is that our government, some environmental groups and the media are becoming aware that, until now, they have pursued and supported policies that have been detrimental to our forests. Now is the time to act.

It gives me great pleasure to see our politicians are beginning to understand the above, particularly when it is someone as important as our Governor. If you follow Senator Jon Kyle press, you will find the same sentiment. I felt it was important to reprint the Governor's landmark and courageous article. Now is the time to act.

As a community in a Wildland Urban Interface, we must take the responsibility to protect our forest and cabins not only for our selves, but also for the preservation of this beautiful Ski Island and for our children. Now is the time to act.

One important protection our community needs is a reduced fuels zone around our communities where crown fires would loose their steam, drop to the ground and become more easily controllable ground fires. For this to happen, the Forest Service must not only create a thinning program with a suitable budget, they must be able to execute the program. Several times in the past, money has been allocated for a thinning by Forest Service planners when it was later withdrawn in favor of programs elsewhere. We need our politicians to specifically earmark specific allocations for a Mt. Lemmon fuels reduction program. This is where to act.

Contact your legislators and explain the Forest Service needs funding earmarked for Mount Lemmon for fuel reduction. I think they are ready to listen.

On another note, the Mt. Lemmon Homeowners Association is sponsoring a fundraiser Pancake Breakfast on Saturday, October 14 at 8 to 10 AM at the Mount Lemmon Fire Department. \$5.00 or more donations would be appreciated. All funds raised will be donated to the Mount Lemmon Fire District to help raise funds for a much needed new tanker. Lets all get out and support this fundraiser.

Forest Health: A LOT is up to YOU!

By FireWise Chairperson,
Judy Epstein



Prior to fire suppression practices, non-catastrophic fire, played a much-needed role in maintaining Forest Health. Fires then burned dead-and-down fuels, reduced numbers of surviving seedlings, and prevented the buildup of ladder fuels. Spacing between trees was dramatically more open, an integral part to the forest's health. Circumstances are quite different now; we are at **extreme risk** for catastrophic fire, as we have recently witnessed.

NOW is the time to thin fuels and minimize these fire risks for the years ahead, especially since experts believe a significant drought cycle is beginning! Fuel management of our lots is our responsibility as private landowners. As such, we need to become educated in how to best handle this responsibility. This article provides information important in determining which conifers (evergreens) common on Mt. Lemmon to thin. Listed below are our 4 dominant species, each with varying sunlight, spacing and moisture requirements:

- **Ponderosa Pine** with long pine needles, about 4 to 6 inches in length
- **White Pine** with mid-length pine needles, about 3 inches long
- **White Fir** with short flat slightly wider needles, almost 2 inches long
- **Douglas Fir** with short flat needles, about 1½ inches long

Forest Health is based on environmental balance. Unfortunately the current growing trend in our forest suggests a lower probability of long-term survival, unless changes are made. Thanks to Steve Hensel, US Forest Technician, important components to the complex and interconnected dynamics of forest health are listed below. Understanding these components improves your ability to assess what needs thinning on your lot.

- Ponderosa Pine and Douglas Fir were the dominant upper canopy trees of this region a century ago. Current trends suggest that this will not be so in the future.
- Ponderosa Pine and Douglas Fir are **MORE FIRE** and **DROUGHT TOLERANT** than White Pine and White Fir.
- Mature Ponderosa Pines have a golden colored bark with a darker crack-like coloring. (Younger Ponderosa trees have a dark brown to almost black bark, often re-

ferred to as “blackjack” pine.) The Ponderosa Pine bark is thick and promotes their fire resistance.

- Ponderosa Pine and Douglas Fir have **MORE SPECIFIC GROWING REQUIREMENTS** than White Pine and White Fir.
 - Ponderosa Pine is shade **intolerant** and does **NOT** tolerate being crowded. It needs open sunny places to successfully reproduce into a healthy, fire resistant tree, usually on slopes facing south, west or both. Such spacing is evident when the distance from one golden bark of an older tree is compared with other golden bark Ponderosa nearby.
 - Douglas Fir is **mildly shade tolerant** but can not successfully reproduce if crowded. It needs damper environmental conditions such as on north-facing slopes, and has more drought tolerant traits than the White Fir.
 - Neither Ponderosa Pine nor Douglas Fir will successfully reproduce in the shadow of its own kind or another tree. This means that for either to flourish into the beautiful large trees we see now, they must not have competition from trees too close to them.
- Ponderosa Pine and Douglas Fir naturally prune their lower branches as it grows, where White Pine and White Fir tend to keep their lower branches much longer, supplying ready made ladder fuels up their trunk into a crown fire.
- White Pine and White Fir are **shade tolerant** and **can** grow under more shady conditions, such as in the shadow of a Ponderosa Pine, Douglas Fir or any other type of tree. This ability along with the removal of fire from the system leads to a more competitive growing environment that prevents younger Ponderosa Pine and Douglas Fir to grow into the fully majestic mature trees we see now.
- White Pine and White Fir have thinner barks as saplings than do Ponderosa Pine and Douglas Fir and hence are more susceptible to fire damage when they are young.
- White Pine and White Fir flourish naturally in wetter and more protected areas such as drainage areas. However, they have the versatility to grow in wider ranges in our forest, even locations that leave them more susceptible to drought and fire and increase their exposure to disease, rot and death in fire or drought conditions.
- In our present forest conditions, younger growing trees will indeed replace our older mature trees but the upper canopy of trees will be a species change to White Pine and White Fir. These trees, however, will be more susceptible to catastrophic events such as fire, drought and disease.

SUMMARY:

Without the balancing effects of non-catastrophic fire, the forest has been growing in unnatural ways. Besides an

overgrowth of the forest, potentially weaker specie susceptibility seems evident, given the present course of growth. For example, on a sunny, dry slope previously dominated by Ponderosa Pine, White Pine is now flourishing (and soon dominating), yet this specie is less fire and drought tolerant and more prone to disease and infestation on these sunny slopes should it actually survive fire and drought. The same is true on damper, moist slopes of the mountain between the previously dominant Douglas Fir and the emerging dominance of White Fir outside of its natural growth in drainage areas. If this were to continue, the forest will become **less tolerant** to fire and drought, even with healthy spacing and ladder-fuel elimination and **more susceptible** to disease and infestation.

Rectifying years of fire suppression and restoring Forest Health can be accomplished by mimicking the effects fire would have had on the environment. We can do this through responsible and knowledgeable use of chainsaws, well-planned and skilled implementation of prescribed burns, and diligent removal of built up ladder fuels.

Prescribed burns are reserved for authorities with expertise in this field to determine if, when and how a controlled burn is to occur in a given area of forest, and rarely, if ever, does it occur within a residential community such as ours.

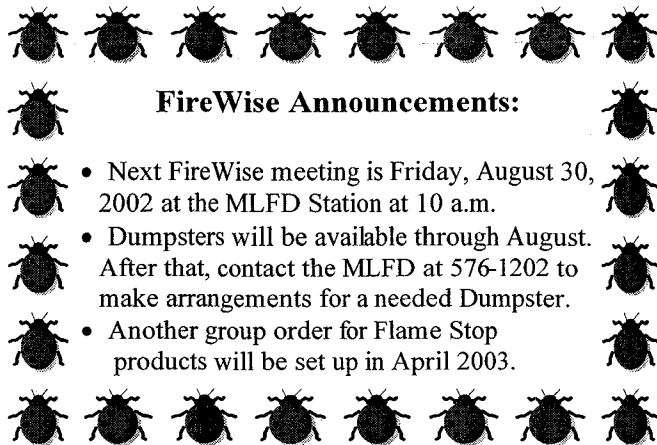
Thinning trees and removing ladder fuels on our lots is **our responsibility**. To do so responsibly, your lot must be knowledgeably assessed before proceeded with the trimming process. Then, homeowners should either have experience with a chainsaw or hire a Sawyer (Sawyer contacts are covered on the FireWise Announcement page of the web site: www.mountlemmonfire.com).

To assess your lot, ask and answer the following questions, getting skilled assistance whenever needed through MLFD (576-1202), a State Forester (628-5480), Steve Hensel, US Forest Service (749-8700) or other such knowledgeable source:

1. In which type of habitat is your lot?
2. What type of trees would naturally grow there if fire had naturally existed?
 - a. If it is a sunny dry slope, is White Pine unnaturally intruding upon the natural habitat of Ponderosa Pine?
 - b. If it is a damp moist slope, is White Fir unnaturally intruding upon the natural habitat of Douglas Fir? (Since their needles can appear similar, this determination may involve an experienced forest person to answer, as it may be difficult to distinguish the difference between these 2 types of trees when they are saplings.)
3. If growing in their natural territory, are there any healthy specimens of Ponderosa Pines or Douglas Firs? If so, how can you further support their growth into majestically mature trees?

4. Do the trees on your lot have non-competitive space to flourish? If not, identify the healthiest ones and eliminate the stunted, bent, forked or diseased ones. (Cut live (green) trees, especially with signs of active bark beetle infestation, **MUST** be bucked and covered with clear plastic within 7 to 10 days of felling when temperatures are NOT in the freezing range. Freshly cut trees attract and promote the propagation of bark beetles and can cause them to reproduce and then migrate and infect nearby trees!)
5. If a ground fire was to come through, are there any ladder-fuels present that would carry the fire progressively into the branches and canopy? What trimming of branches and removing of plants could effectively eliminate these ladders? What arrangements can you make to remove this slash from the mountain ASAP, as they too can attract bark beetles (as mentioned above)?

Taking the above responsible action helps to safeguard your mountain investment, build a FireWise community and promote Forest Health. Restoring Forest Health reduces the potential for large catastrophic events in the future, including fire and infestation of insects or disease. May your "lot" flourish and may the forest be a lot healthier!



FireWise Announcements:

- Next FireWise meeting is Friday, August 30, 2002 at the MLFD Station at 10 a.m.
- Dumpsters will be available through August. After that, contact the MLFD at 576-1202 to make arrangements for a needed Dumpster.
- Another group order for Flame Stop products will be set up in April 2003.

More Thank You's!

By Dani Hayhurst
member, Mt Lemmon Fire Board

As a member of the Mt Lemmon Fire District board, I have seen many acts of kindness and great generosity toward the Mt Lemmon Fire Department. Last issue you read about the unbelievable generosity and support of the **Delays** during and since the **Bullock Fire**, and the fantastic turnout for the **MLCEC Pie auction** in July netting over \$1300. Well, during the pie auction, one of the pie makers, **Dolly Quinn, of Dolly Quinn Salons**, participated by making several pies and bidding on several more. While they

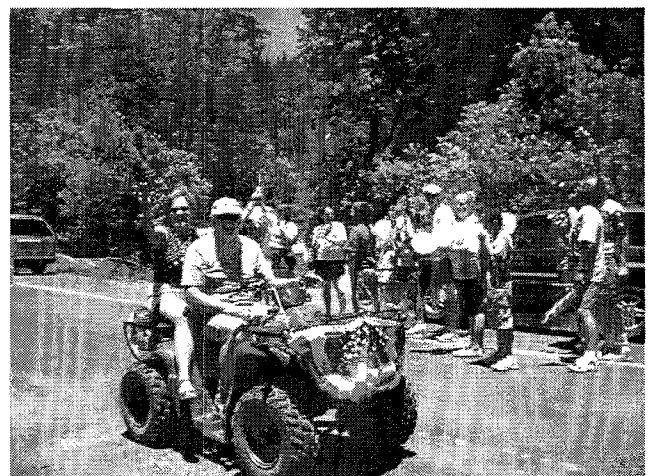
4th of July Parade Pictures



Pima County Supervisor Ray Carroll enjoying the Parade

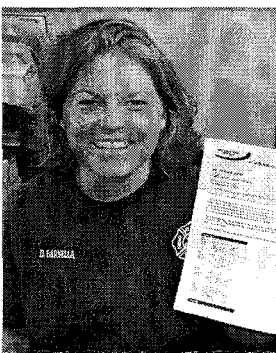


Vintage cars



Ed and Donna Roll

were enjoying the day, **Howard**, Dolly's loving husband, spontaneously offered to pay for **Chief Dean Barnella**, **Assistant DeAnna Barnella** and young son **Garrett's** airline tickets to New York City to represent the Mt Lemmon Fire Department in the services for the fallen fire fighters this coming September from the 9-11 disaster. This in itself is a generous act, but what makes it even more special is the fact that **Dolly** and her husband **Howard** do not even own property on Mt Lemmon! Their love of Mt Lemmon and their respect for the work done by firefighters transcends property lines - it comes strictly from their hearts. So, if you have the opportunity to meet either **Dolly Quinn** or **Howard Quinn** at any time, please be sure to pass your thanks on to them for all their support of Mt Lemmon and it's fire fighters! Below is a photo of **DeAnna Barnella** - all smiles as she receives her airline tickets for New York City !



"DeAnna Barnella receives her ticket confirmation to New York City"

Bear versus Mike Stanley's Refrigerator, the bear won but lost later.



Thank you Donny Tapp

By Karen Shunk

Donny Tapp and Susan Glegg have been residents on Mt. Lemmon for the past 20 years. The fulltime residents of Summerhaven know them both to be two of the kindest hearted people you could ever meet. They are totally unpretentious, and always loving and caring.

During our Bullock fire evacuation, Donny immediately took it upon himself to start the "Mt. Lemmon Relief Fund". Working in partnership with Ray Carroll, he made sure all of us that were suddenly homeless and out of six weeks income had housing, food, drinking water and money for expenses.

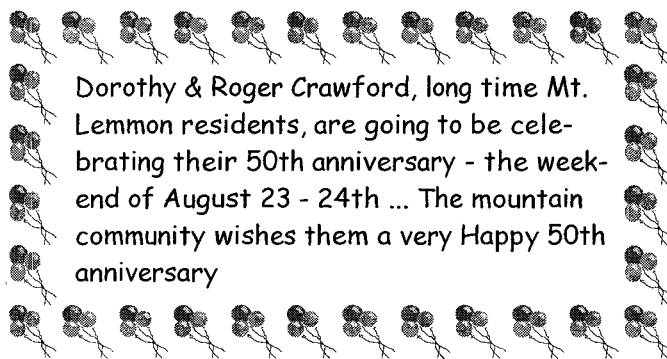
After we returned to the mountain, Donny continued to deliver bags of groceries and funds to everyone in need. He also did an incredible service to the whole community by daily raking, bagging and hauling literally thousands of bags of pine needles, often free of charge. He and his crew of volunteers filled the large dumpsters daily and kept checking to make sure everyone's need were met.

Those of us that are worker and business owners on the mountain had many emotional days. We were displaced and threatened with the very real possibility of losing everything we own, except the carload we had time to remove. But Donny kept everyone's spirits up the whole time. He made sure we all got together for support on a regular basis. He arranged for everyone to go out for dinner together several times, with the incredible generosity of many Tucson restaurants, grocery stores and businesses. He spent every day in the 104-107° temperatures working on our behalf.

Thank you Donny for all you have done for all of us that work daily to keep Mt. Lemmon businesses and community running. Your kindness and generosity will never be forgotten.

DISPOSAL OF PINE NEEDLES

Instead of hauling needles to a dump off the mountain or burning them with our incinerator on the mountain, a suggestion has been made to make them into Pine Needle logs. I am looking into this concept and would appreciate any input from our readers about the feasibility of this. Please phone or FAX to Tom Thomas 520 749-2664 or Email at TomRThomas@aol.com



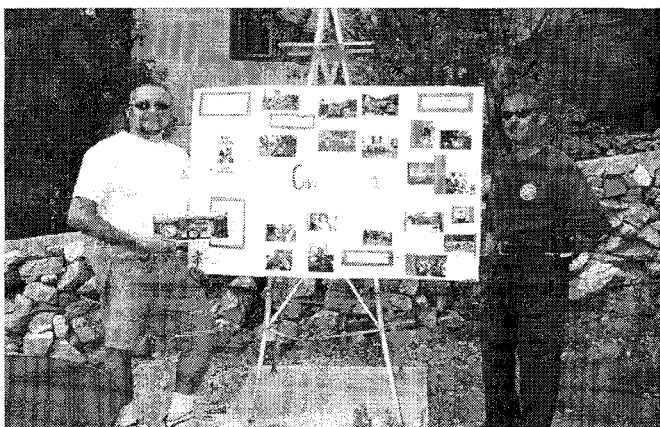
Dorothy & Roger Crawford, long time Mt. Lemmon residents, are going to be celebrating their 50th anniversary - the weekend of August 23 - 24th ... The mountain community wishes them a very Happy 50th anniversary

What was the Traffic Jam About last Sunday???

By Dani Hayhurst, MLCEC member



The Arts, Crafts and Psychic Fair was held last Sunday, August 11th. The photo above is the traffic from folks coming up to enjoy the Fair, having heard about it thru Jonas Hunter, personality & program director of KLPX-FM 96.1, his wife Wendy Hunter, DeAnna Barnella along with promotions from cable channel 73 Valley View and channel 9 news promotion with Guy Auchley, Bob Zimmerman and firefighter Jacob Jirschele.



Jonas Hunter & Jacob Jirschele

The beneficiaries of the Fair included the Mt Lemmon Fire Department, Casa Gloriosa, and the businesses in Mt Lemmon, who saw a bumper crop of new customers, walk through their doors thanks to all the advertising! Thank you's also go out to all the arts, crafts and psychic groups who participated and donated to the MLFD and Casa Gloriosa, an organization that helps women and children who are affected or infected by HIV. Some of the children being helped by Casa Gloriosa were on Mt Lemmon for the first time in their young lives. They enjoyed a first hand tour of one of the fire trucks on display. The skies were quiet for the event and everyone had a good time. We'll report back at a later date with numbers. Right now we just want to pass our thanks on to everyone for all their support!



Annual Square Dance - Saturday night August 31st, 7-10 pm at the Mt Lemmon Fire Station - Fred Field will be the caller and the band will consist of Bud Field on guitar, Bonnie Lohman on bass, Rachel Crawford on fiddle. Admission is by Donation and all the proceeds go the MLFD. This is loads of fun for ALL ages - the young kids enjoy it as much as the older folks. It's a great way to mingle, meet your neighbors and exercise. If you've never square danced before - never fear - the caller will teach everyone the steps. You'll probably see the usual gaggle of husbands standing as close to the bay doors as possible trying to escape. The smart men are the ones on the dance floor arm and arm with all the girls!

Talk about meeting your neighbors - welcome to new neighbors **Carl H. Mangelsdorf III** and his wife, **Dr. Mariali Garcia**. They purchased the Max Klinger cabin and have already strung lights around the house to show their community support. Wave "HI" and introduce yourselves to our new neighbors.

Mt Lemmon school officially started this week and the future teacher is being interviewed as the Echoes goes to press. There are 7 kids enrolled in **Zimmerman Elementary**, and 6 candidates who applied for the position of teacher of grades kindergarten thru six.

Deputy Joel Pesce is now former Deputy Joel Pesce. He's fulfilling a life long dream to become a helicopter pilot. Good luck to him and his family - they were a welcome part of our community and hearts and they will all be missed.

Halloween is right around the corner from the October-fest festivals. Enjoy the fall colors and start thinking about your Halloween costumes - The Halloween party at the Fire house has become an annual event. We'll check the football schedules and try to please as many as possible when selecting a date - no guaranties on not getting snow. It's happened before.



BUNKO

Saturday August 24th 6:00 pm

Summerhaven Coffee House

Cost is \$19.00 for either:

Roasted Prime Rib OR Blackened Salmon
with Pineapple Salsa

RSVP for Bunko by Sunday Aug 18th
your choice and numbers to:

Linda Mulay 327-4625 or 576-1417

Water Co-Op

By Ed Roll-President

The annual membership meeting was held on June 29th with two new directors elected. Phil Benziger and Gordon Hunter were elected to replace outgoing directors Gary Slocum and Larry Waldron. The board wants to thank both Gary and Larry for their dedicated participation in the operation of the co-op as Larry was very instrumental in helping set up the remote monitoring system and Gary involved in the overall operations. For the last several years Chuck Autrey has done an outstanding job as president and for the upcoming year Chuck will become the treasurer. The board members for 2002-2003 are: Chuck Autrey, Treasurer; Phil Benziger; Dan Cutler, Co Maintenance Chairman; Dennis Haynes, Secretary; Gordon Hunter; Alan Lawson; John Mulay, Vice President and Co Maintenance Chairman; Ross Quigley and Ed Roll, President. Operation of the system is handled by Operations Manager Michael Stanley and his assistant Nathan Dennis.

At the annual membership meeting, a request was made for clarification on who can vote and what the membership requirements are. The Articles of Incorporation for the Water Company are quite specific:

"(A) A member must be the owner of land within the radius of one mile from the southwest corner of Section 30, T11S, R16E, G. & S.R.M., Pima County, Arizona, or hold a lease in the same area from the Forest Service of the government of the United States.

"(B) All property owners will be members of the corporation, unless they choose otherwise by written notification, all non-property owners (renters) will be nonmembers."

If there is significant interest in changing the Articles of Incorporation, the interested parties must submit a request to amend the "Article of Incorporation" and demonstrate that there is a broad interest among the community to make the change.

The rate increase approved in 2001 by the membership has been completed and sent to the Corporation Commission for their review. After the Corporation Commission reviews our submittal (it can take up to 6 months) they will advise us if any additional material is required to complete our submittal and provide us with their comments on the rate increase.

The water company has purchased several pressure measurement gauges and fitted them with hose bib connectors. Water Customers may borrow these gauges to check the water pressure at your cabin. If your hose bib is on the customer's side of your pressure regulator, the reading will verify your regulator is working properly. If you don't

have a regulator, you should be aware you are required to have one and should make arrangements to have one installed. If you don't you could have trouble with varying supply pressure blowing the safety regulator on your hot water heater or even creating leaks in pipes and causing costly damage and loss of water.

The Co-op will go back into phase 2 of our Curtailment Plan on Thursday 8/15/2002.

By Michael Stanley-Operator/Manager

I want to thank every one of our customers for being so conserving during the Phase 3 of the drought. Thanks to the rain, the springs are recovering and we are storing the water. The fire danger is less and there is more water for our domestic use. We will be able to reduce our curtailment to the Phase 2, which is a 50% voluntary reduction in use. Once again the customers of the Co-op have provided conservation measures to prevent the need to haul water up the mountain. The businesses cut their use by more than 50% during these last months. The customers have done an excellent job by hauling water, reducing toilet flushing, using paper products, cutting shower time, using gray water for plants and the list goes on.

One of the long time customers asked if they could start turning on their meter and use water. I said they should have been using water during the curtailment. They stated that they would just bring water up 15 gallons every trip to eliminate the need to turn their water on. Their water savings was 100%. One of the businesses diverted wastewater from the ice machine at night to water the big blue spruce tree by the Post Office then diverted day water for inside plants. Customers like these have gone above and beyond the call of conservation.

Again, I want to thank all of the customers for their continued efforts in supporting the Mt. Lemmon Co-operative Water Company.

Fire District Update

by the Barnella's

The Fire District would like to thank the community again for all the support that has been given. What a big turnout on Sunday the 11th! I haven't seen that many vehicles on our roads since the "Bullock" Fire! And those were Fire Apparatus! The events since the evacuation have been awesome; the Pie Auction in July and the Arts, Crafts and Psychic Fair this month. Special thanks to Karen



Shunk, Wendy Carlson-Hunter, and always to the MLCEC's.

Fuels management on Mt. Lemmon has been greater than ever expected. Again, thanks to the community for the response and joint efforts of clean-up, removal and donations toward the 40-yard dumpsters that have been supplied to the mountain. The weather has slowed down activity, but we love to see the streams flowing through the mountain! The dumpsters will be removed by the end of August. If work projects are on-going, we can request more to be delivered or please contact Tucson Roll-offs directly.

Please welcome a new staff member to the Mt. Lemmon Fire District; Harry Findysz. Harry has been in the fire service for 18 years and has recently accepted a Reserve Captain position with the Fire District. Harry will be assisting with the training at the fire station and with this, we are looking for "A Few Good Kids"! There have been many teens showing interest in the fire service. The Mt. Lemmon Fire District would like to encourage an "Explorer" program. We need a minimum of 5 teens, from 14 to 20 years of age. Please contact DeAnna at 576-1202 for more information.

Cooler weather is coming, and fire places are already being used. Galvanized ash cans are available at the fire station for \$15.00 each. Please be Fire Safe!

WOMAN'S CLUB NEWS...

By Luann Waldron

Our Aug 3rd meeting was held at Linda Cutler's cabin on a wonderfully rainy afternoon. DeAnna Barnella, our guest speaker, described the benefits of the CAF (foam) System she uses in fighting cabin fires as opposed to fighting fires with only water. She also brought information about the "pumpkin" which is an inflatable water container. The Fire Dept would like one for use in remote areas. Our club has agreed to purchase a pumpkin for the fire department.

Saturday, August 17th at 2:00 PM will be our Annual Membership Tea at B.J Singh's cabin located at the end of Turkey Run. We would like to invite all women on Mt Lemmon to join us for this enjoyable afternoon. We will be having musical entertainment from 2-3 PM.

I am sorry to announce that Jo Ann Foor will be leaving as our club treasurer. We would like to thank her for her years of service to our organization. Our new treasurer will be Renate Beer, and we thank her for stepping forward to be part of our Board of Directors.

Saturday, Sept. 7th at Noon will be our Family Potluck at B. J Singh's cabin. The club will provide hamburgers and hot dogs. Condiments, plates & forks will also be provided. Please bring a salad or dessert to share.

Calendar

Litefest Saturday nights remaining this Summer

Kids Club Cancelled for the Summer
Community Flea Market Postponed
School Starts Aug 14 th

Women's Club Membership Tea

Aug 17 12:30 pm

@ B J Singh's Cabin

Bunko Aug 24th, 6:00 PM

@ Summerhaven CoffeeHouse

FireWISE Meeting Fri, Aug 30th 10:00 am

@ MLFD

Loma Sabino Pines (24 hr) Gate Closure

9:00 am on Sat, Aug 31st to

9:00 am Sun. Sept 1

Square Dance 6:00 pm Aug 31st

@MLFD

Woman's Club Family Pot Luck

Sept 7th, noon @ B J Singh's

Water Co-Op Meeting

Sept 22th ,10:00 am @ Maint. Office

Pancake Breakfast Oct 12, 8-10 am

@MLFD

Annual Loma Sabino Pines Gate closure August 31st:

Our association attorney has advised us to continue the policy of closing and locking all association gates for a 24-hour period. This is needed to insure exclusive association ownership of our common area roadways.

This year's closure will begin on Saturday August 31st at 9:00 AM and will continue until Sunday September 1st at 9:00 AM.

The **ONLY** access to our area will be by permission of Pima County deputies stationed at the Loma Linda gates. Only association property owners, associate members and those who have proper authorization will gain access. Any prior authorization for guests, contractors or renters must be made in writing through Stratford Management at 795-6500.

PROVISIONS WILL BE MADE FOR ALL EMERGENCY VEHICLES

BULLOCK LESSONS

MAY/JUNE 2002

Down in Bullock, off to the east, a single ember glowed.
Fire running west, hard and quick, was not to be slowed.
Slurry, water and hand lines did not quench this beast,
It grew and plumed over Burro, Guthrie, and Evans to the East.

Fire flew on to Green and the Vistas too,
Not much was left, for me and for you.
"Would it reach the Haven?" everyone was saying.
Oh no, we hope not and all of us just kept praying.

Flames over hills, valleys and drains
Charred bushes and oak, nothing remains.
Then the pines are ablaze. Oh my what a sight!

We hope this will end with just smoke, tonight.
All the people were vacated,
crying in their tissues.
Officials said safety was at the top of the issues.
We left it all behind said one fellow,
Hearing that line it became hard to swallow.

For here I was in the depths of the flames, Knowing
ing this fire could take all that remains. Take our life, as we know it, all so gay
Burn it, turn it to ashes and throw it away.

The TYPE-ONES and equipment came to extinguish the blaze.

Strange how the Village and fire fighters looked in this haze.
The crew of a thousand worked and slaved
To save pines on a defense line that was paved.

Shovels, Mc Clouds, Pulaski's and sweat
The crews worked hard with no regret.
At Bear, Rose, Sollars, Willow and Bigelow too,
The big fire was stopped by the hand crew.

Bombers with slurry, choppers with water
Flew low as the flames even got hotter.

With the fire so close it's hard to sleep,
We wake several times and feel the heat.
Even the Nomex was warm to the touch.
We all needed showers. We knew that much.

Fire over Wallow and on to the Camp
The flames grow and then revamp.
Structure crews with sprinklers, pumpkins and tankers
Sprayed water and foam to moisten fire-line anchors.

Hot shots moved fuel and ladders from the spot
To keep the structures from getting too hot
The fire crew slaved
Cabins were saved.

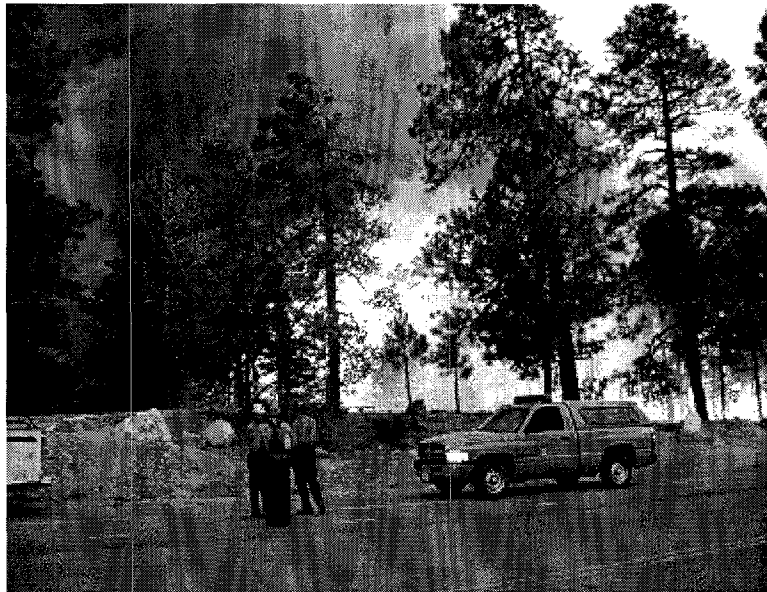
The mad flame moved back,
Then went on with its attack.
On to Aspen and Inspiration, too,
Without hesitation, fire grew and grew.

Then the fire boss drew a line on the road
This is where this fire will lessen its load.

Prayers were answered in a blessed wind puff,
By the grace of God this seemed to be enough
To change the course of that disastrous blaze
And move the Bullock Fire to the final phase.

The flame did leave us and down it went
Via the Control Road as if heaven sent.
Down to the bottom with smoke and ash,
Flames went down and disappeared in a flash.

As the fire went down Control it did jump-
Burned one or two structures, left just a stump. Attacked by flames and turned into black.
Crews were unable to keep the fire back.



Bullock wreaks havoc in the lower dry land, Over road, hill and dale, through river, wash and sand.
Thirty thousand acres were counted as Bullock did leave,
Forest Service and Tree Hug-gers cried on their sleeve.

Millions of dollars spent to battle this blaze,
Owl habitat lost, erosion, smoke and haze.
Tree trimming, logging and clearing the duff, Will Rules and Regs prevent such stuff?

Have we learned a lesson
Through the Bullock Fire ses-sion?
Is it easier to get a permit to fire wise an acre?

Or is it better to burn 30,000 and send
It back to the Maker.

It will take hundreds of years to get
back what was lost.

Just think one match and look at the cost.
We are thankful no lives were lost or taken
All were safe and none forsaken.

We are here to thank all the persons that applied their skills
To extinguish the mad fire that attacked our hills.
So thanks to all of you, from the bottom of our hearts
THANKS SO MUCH for doing your parts.

© Michael Stanley 7/20/2002

But wait, it will get interesting said the boss,
Looking, as the smoke cloud seemed cross.

At Alder and Fire Station the back burn grew,
Through the steep canyons fire flew,
Disrespecting these back burns of the crew.
The fires merged and the flames increased, too.

Yes, flew with flame, gasses and embers
Hundreds of feet into the timbers.
We who were there will always remember
The fire bosses order to surrender.

Evacuate and leave Loma, these words were uttered.
On radios voices quivered and sputtered.
Evacuate we did and moved quite fast,
We could see embers over us falling as ash.

Classifieds

For Sale-Electric Incinole Toilet
Paid \$1550 will sell for \$1300 , never used.
Call Richard Westervelt 297-2713
For Sale-Winter's Coming

1994 4WD Toyota 4-Runner 5spd, 6cyl
Power/Tow package -Good Condition, Lots of Extras
Must Sell Now 884-4222

Wanted- Nathan Dennis, a new Water Co-op employee is seeking a place to rent on the mountain for himself and his wife. Anyone interested in renting their cabin , please contact Nathan at 576-1538

Pancake Breakfast

Saturday Oct 12, 8-10 am @ Fire Station

Pancakes, Bacon, Sausage, Orange Juice and coffee

Suggested Donation \$5.00

LOMA SABINO PINES WORK WEEKEND

By CC & R's & Forest Stewardship Committee

When we were allowed back on the mountain after the Bullock fire there was a lot discussion about the need to remove wildfire fuels in the Loma Sabino Pines Subdivision. Since residents weren't able to do their usual Memorial weekend cleanup due to the fire we wanted to encourage people to clean their lots as soon as possible. Linda Currin suggested and helped organize a work weekend on June 27, 28, and 29. A letter was mailed to every homeowner requesting that they clean their lots and also requesting volunteers to help haul trash and trimmings. The Mount Lemmon Fire Department scheduled two roll-offs for delivery prior to the work weekend and several people volunteered to provide trucks, a loader, a chipper & other equipment to help haul trash from cabins to the roll-offs.

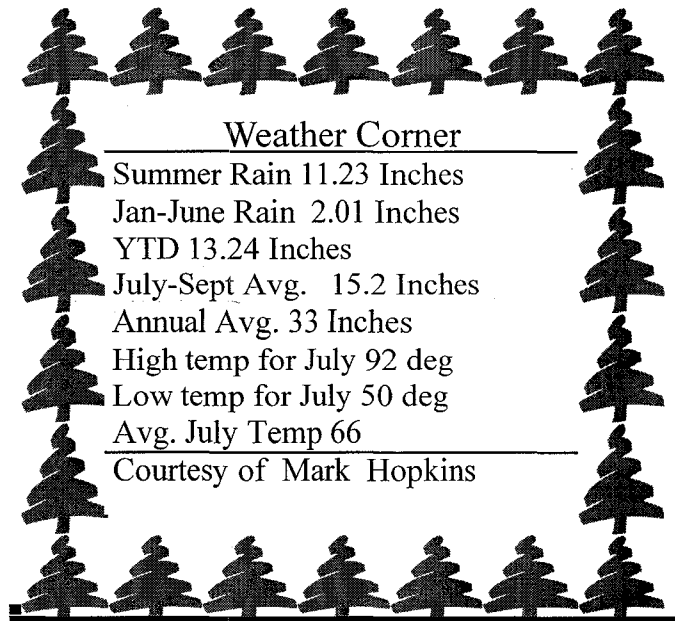
The weekend was a success. We moved hundreds of bags of pine needles and many truckloads of slash and completely filled both roll-offs by Saturday afternoon. Bulky trimmings and dead materials were chipped and loaded into the roll-offs. This enabled us to maximize use of the roll-offs.

We would like to thank the homeowners who responded by raking and cleaning their lots. Special thanks go to all those who loaded and hauled bags: Lynn Thompson, Susan Fleming, Susan Lee Benson, Mike Cooper, Jaimie & Bill Turner, Linda Currin, the Dennis Cozzetti Family, Art Flagg, Luann & Larry Waldron, Chet Goldberg, Homer Wilson and Karen & Gary Brewer. Special thanks to Chip Delay for providing and operating the chipper, and for providing the loader that Art Flagg and Bill Turner used to haul the large piles of slash. We also owe special thanks to

Jeff Kennedy & Leroy Day for their help. Neither of them lives in our subdivision but both worked several hours on Saturday and Sunday and Jeff also provided his truck for hauling.

We also want to thank to DeAnna and the MLFD. DeAnna arranged for the roll-offs to be in place and provided a couple of crews to cut and stack dead materials on Wednesday and Thursday. We were able to clean some common area and get some dead and down materials cut up on a couple of lots. They also responded very quickly and efficiently when needed in two emergency situations.

If we omitted thanking anyone we apologize. That was a VERY busy weekend and each and every person who gave up their time to help the subdivision deserves a huge THANKS. We have plans to do it again later this summer.



All membership dues are now past due. If you'd like to remain on the mailing list, please mail your dues today! The Echoes is the publication of the Mt. Lemmon Homeowners Association for its membership. Membership dues are \$25 annually. Renter and Friends of the mountain may obtain an association membership for \$20. Send your checks to MLHO, P.O. Box 699, Mt. Lemmon, AZ 85619. This Echoes is brought to you courtesy of the Mt. Lemmon Homeowners Association. It's one of the benefits of being a member.

Board members are Ross Quigley, Franny Crowe, Kathy Shields, Carrie Reitz, Fran Zimmerman, Florence Wilhoite, John Mulay, Pete Krauss, Tom Thomas, Don Underhill, Jim Connolly and David Ostapuk. The editor of the Echoes is Gordon Hunter. If you have any suggestions or comments, I can be reached at 576-4377 or by Email at gnhunter@mindspring.com.



Sky Island Construction LLC

*Specializing in
Building and Remodeling of Cabins and Homes*

Licensed
Bonded

Gregg Ferguson
471-6322

MADSON, BROWN & ASSOC., LTD.

EDWARD A. MADSON, SRA
Certified Residential Real Estate Appraiser

1735 E. Ft. Lowell, #9
Tucson, AZ 85719

(520) 318-6000
FAX (520) 318-6006

ARIZONA - TERRITORIAL

termite & pest control co.

Arizona's Leading Termite & Pest Control Service
100% Satisfaction Guarantee
Free Estimates
Call Today!
881-8535
2569 E. FT. LOWELL RD.
TUCSON, AZ 85719

FREE ESTIMATES
KEN VAN ZANDT, Owner
Radio Dispatched Trucks
881-8535
2569 E. FT. LOWELL RD.
A NATIVE ARIZONIAN / OVER 35 YEARS

Cozzetti Construction, Inc.

Dennis Cozzetti
3849 E. Calle de Soto
Tucson, AZ 85716

phone 323-7700 fax 323-7733
pager 620-2706

AZ License #128028 AZ Tax ID #10-177611-W



Cornelia (Neil) Bloomfield
Associate Broker

p.o. box 611 • mt. lemmon, az • 85619 • (520) 576-1632 • fax (520) 576-1391



Dick Bloomfield
Broker

p.o. box 611 • mt. lemmon, az • 85619 • (520) 576-1632 • fax (520) 576-1391



CABIN FOR RENT

Call For Reservations

Gift Shop General Store
Homemade Fudge Groceries

MT LEMMON GENERAL STORE & GIFT SHOP

Carol & Phil Mack

P O Box 754
12856 N Sabino Canyon Parkway
Mt Lemmon, AZ 85619-0754

520-576-1468
FAX # 520-578-9375

Janet
Fayleen LMT, BSW
Health Therapist

(520) 884-4222

- Deep Muscle Therapy
- Injury Rehabilitation
- Gift Certificates
- Posture, Movement & Flexibility Training
- Swedish Massage
- Lymphatic Massage
- Sports Massage
- Reflexology

Mt. Lemmon and Tucson



The Living Rainbow, Inc

P.O. Box 753-S
Mt. Lemmon, AZ 85619
(520) 576-1519

rainbowz@mindspring.com
fax (520) 298-4770
Debbie Fagan

Windchimes & Gifts Since 1979

celebrating our 23rd year in business

GEORGE R. REITZ
REALTOR®
Multi-Million Dollar Producer



OFFICE (520) 790-7320
FAX (520) 790-7574
TOLL FREE (800) 280-7320
HOME OFFICE (520) 722-1285

7810 E. BROADWAY BLVD • TUCSON, AZ 85710

**Mt Lemmon Suites
& Fine Crafts
& Village Market**

(Please identify yourself as a homeowner or resident to
qualify for 10 % discount in Village Market)

12880 N. Sabino Canyon Parkway
Tel: (520) 576-1664
Owner: Sonni Wendt

(520) 576-1333
(520) 576-1300 PHONE/FAX



MOUNT LEMMON REALTY, INC.

KAREN A. SHUNK
Sales Assoc./Property Mngt.

P.O. BOX 1
MT. LEMMON, AZ 85619-0751



Jimi Bredice
Chef
General Manager

Fresh, Homemade
Pies, Pastries
Desserts
Soups, Salads, Sandwiches
Quiches

12872 N. Sabino Canyon
Parkway, Mt. Lemmon
576-1586



ALAN LAWSON

PH 520.293.2233
FAX 520.293.6633
CELL 520.990.3123

4001 N. RUNWAY DR. #151
TUCSON, AZ 85705

www.allstatetransportation.com

MINI-COACHES • VANS • SEDANS • LIMOUSINES

**C.R.
BIRCH**

EXCAVATING & GRADING

We dig our work



RICK BIRCH
Owner

Office 749-2902
Mobile 405-8836

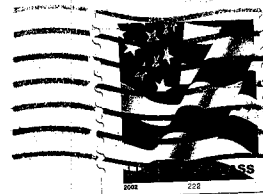
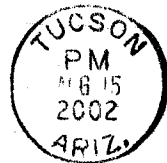


**Santa Fe
Southwest Designers**

Specializing in The Latest
Southwest & Western Furniture
Consultations and Decorating

LYNN PETERMAN
8946 E. Calle Kuehn
Tucson, AZ 85710

Off: 520-885-3211
Mob: 520-370-7604
Fax: 520-546-0575
Call for Appt.



Mt. Lemmon Homeowner's Assoc
P.O.Box 699
Mt. Lemmon, Az 85619

Larry & Luann Waldron
4470 N. Cerritos Dr.
Tucson, AZ 85745