

The

# Mt. Lemmon Echoes

*Serving the Homeowners of Mt. Lemmon*

**"You can overlook Tucson, but you can't overlook Mt Lemmon"**

## A Note From The Pres.

by Ross A. Quigley



I'm sure I don't need to remind anyone how lucky we all are to have survived this past month's threat to our homes. While luck played a part in Summerhaven's survival, it was not the major factor. We all owe an unbelievable amount of thanks to every firefighter that fought this fire and a special thanks to our very own Mt. Lemmon Fire Department and all their volunteers. The efforts they put forth to assure they would have a fighting chance to stop it if it reached the village are amazing. I received nightly reports from Michael Stanley to keep me updated on both Water Coop issues and the approaching fire. It was extremely encouraging to hear the massive efforts that were being made to improve our chances, such as removing all possible propane bottles, raking back an area at least ten feet from every cabin, laying fire hose from Loma Linda Big Tank all the way to the Loma Linda Picnic area, and laying fire hose from the village up to Ski Valley Road.

Think about these efforts made on our behalf and realize that if they could do this in a very short time frame there is NO reason why we can't all pitch in and make our village safer and more defensible! Please don't wait for the next fire before you think about cleaning up your lot or cabin site. Do it now and if you can't, get some help.

On another note I thought you might be interested in knowing who your new Board Officers are. Your new Vice-president is Franny Crowe, Kathy Shields will remain as Secretary, Carrie Reitz returns as Treasurer, and I will once again be President.

At this time, I would like to give a special thanks to

Dani Hayhurst for all the years of her time she has given to producing our Echoes. What a great job Dani !! WE deeply appreciate the hours it takes to put each issue together and the fantastic job you did in assuring that each issue was informative, interesting, and timely. On that timely issue, I must admit to being probably her biggest pain about getting an article in on time. Thanks for putting up with my procrastination! Gordon Hunter has agreed to take over as publisher and at the last hour he is still waiting for this article from me. Some things never change.

I look forward to seeing all of you on the mountain this summer and at this weekends Board meeting we will probably try to plan an appreciation dinner for our Firefighters and Volunteers. We'll keep you informed, but please don't hesitate to tell them personally how much we all appreciate them.

## Fire District Update

by Chief Barnella



Well we have survived the "BIG" one as so many people have told me. I sure hope this is the only one we have to worry about. It was quite an exhausting scare, for everyone. I hope everyone is getting settled in their homes and looking at the vast array of green next to their cabins. I hope, that driving up, everyone got a chance to view the burned over trees from the Bullock Fire from the overlook vistas. This should be our reminder of how lucky we were to still have beautiful trees around our home sites or lots.

I spent many, many hours with the type one incident command staff during the past couple weeks and they all concurred on how lucky we all are. They all asked me to get the word to all residents of Mt. Lemmon, **"You must all accept the responsibility to make the mountain**

**safe".** We must all do our part; not rely on the fire department, Judy Epstein or casual labor to make our property safe. I know there has been astronomical amounts of information given out or written in the **Echoes**, but please make the effort to educate yourself on the basics to protect your cabin and maybe your neighbors. Dedicate yourself to learn how we are attempting to make Mt. Lemmon **FireWISE**, "Get involved".

My last note, I would like to thank the Mt. Lemmon Fire District staff for exceeding far past their normal workload and sacrificing to save the mountain. Also I would hate to forget anyone who took the time to volunteer hours, equipment, food and drinks. I will compile an enormous list later, so for now **THANK YOU!** Garrett, thanks for understanding mom and dads' career, you are fantastic.

Folks, it is up to us to keep this mountain safe for all who live, visit and love this mountain, dedicate the time to make this mountain **FireWISE**. Call DeAnna to get involved.

## Coronado National Forest's

Information Officer Gail Aschenbrenner

The Bullock Fire, which started on May 20, continues to have the potential for extreme fire behavior. "This fire reminds me of a sleeping giant," said Pat Velasco, Fire Behavior Analyst. "The fire has the potential to rekindle unburned islands. Most of the islands are well within the black; however, there is a remote potential for re-burn throughout the fire and especially in the chaparral fuel models."

Public and firefighter safety remains of paramount importance. As residents, business owners and Tucsonans return to Summerhaven, everyone needs to be aware that crews are still working and roads will be congested. They must be approached slowly and with caution. Residents and Tucsonans will want to see what happened to their mountain. Drivers need to watch for firefighters still working the line and engines and other fire vehicles.

The Bullock Fire is 100 percent contained and has remained constant at 30,563 acres. Approximately 400 firefighters and support personnel continue to work the fire. There was no active fire today; however, some smoldering fires remain close to the fire line and within unburned interior islands.

The firefighters and support staff are incredibly grateful for the overwhelming community support shown by the public and the media throughout our efforts on the Bullock Fire. Cards, letters, prayers, cookies and all wishes have

been well received and mean a lot to everyone here.

## MT. LEMMON RELIEF & RECOVERY

by Donny Tapp

So far, its been nothing short of an emotional roller coaster of feelings, concerns, fear, anxiety, build-ups and let-downs. Tears of joy have helped put out the fire of doubt in all of us involved in Mt. Lemmon, the Village of Summerhaven residents and business owners, Ski Valley, property owners and cabin-owners alike. There is a reason to preserve a small community. It is knowing your neighbor and your neighbor's neighbor, your postman, the guys that drive the county trucks, knowing your law enforcement personnel by first name and hanging out around the fire house. You know people by nicknames and find out real names in times like this. We have seen the best of community spirit not only survive, but grow stronger each day.

We had a community displaced. Picture this: you have one shot to load into your car whatever you think you will need to not only survive, not knowing where you're going, or how long this will last; but to put a quick value on all your lifelong possessions....one trip out....do you take tools too?....might have to get a job. What do you take? .....a lot to think about.

Thanks to the East Side Place Apartment Homes management and staff, we were able to stay together as a community throughout the past two weeks. Twenty nine people were housed there...all in a little village of our own again. We tried to always know who was where....who needed what....no matter how big or small....from brake jobs to toilet brushes, and tried to reach all displaced. Some people stayed in hotels provided by The American Red Cross. Others stayed with friends, relatives or even house-sat for someone. Even though I did not talk to everyone from the mountain, I feel in my heart that we tried to reach them all through cooperative communication.

Local Tucson businesses, along with individual and private contributors, donated food, shelter, gift certificates, water, cleaning supplies, animal food and treats, cooked breakfast, cooked and presented a meatloaf dinner and we even had a vacuum cleaner loaned to help maintain the apartments. The list is over forty different ways and means of support and relief in the way of donations and even jobs on Mt. Lemmon. The list continues to grow. The willingness of people to listen to our situation and offer open, honest advice was deeply and personally appreciated. Tucson gave when they were asked, without reservation. Now,

we invite you, as a community to visit our community and allow us to return the heartfelt generosity you so willingly offered to us. God bless you all.

I would like to thank everyone involved with this effort of human compassion--businesses and individuals--particularly those listed below, with a special "thank you" to the local media for reporting the daily events on a controlled level. I want to thank my friends and family of the mountain for hangin' on until we get home. Without everyone, we are only one.

## THANK YOU!

East Side Place Apartment Homes (Lisa Owens, Shane Radecki, Bernice Gutierrez, Jan Clausen, Maintenance and Cleaning Staff), Cox Cable, American Red Cross, Bobbie Clark, Robin Oberholtzer, Bob Einwick, Don and Barb Monroe, Pam Thompson, Roger Lubke, Susan Glegg, Bonny Johnson, Adam Killebrew, Kathleen Matsinger, Bonnie Lohman, Barb Farr (MtLemmon.com), Summit Realty, Girl Scout Troop 230, Chestnut Construction, Bob Shaw (RAS Electric), Dr. Michael Stone (Tanque Verde Chiropractic), Jack Furrier's, Arrowhead Water, Oasis Water, Arizona Feeds Country Stores, Kalil Bottling Company, The Grant Road Target Store, Kirby Company, Safeway, Basha's #86, Albertson's, Buffalo Exchange, Bear Canyon Mail Depot, The Dollar Store on 22nd Street, Moose Lodge 2475, Fry's Food & Drug Stores, Ray Carroll and staff, The Mt. Lemmon Fire Department, The Mt. Lemmon Water Co-op (Mike Stanley), The FireWISE Program (MountLemmonFire.com), Pima County Sheriff's Department (Rincon Substation), the Sheriff's Department Volunteers, and The U. S. Forest Service for all they said they could do.....and did.

## BURN BABY BURN, PLEASE LET'S DON'T

comments by Chet Goldberg



Last night on C-SPAN, Judy Epstein and I watched a US congressman hold back the tears, recounting his experience with trying to save the forest in his district. For ten years he had a program in place to make FireWISE his loved forest. Every time, just before work was to be done, a fanatic threw in the monkey wrench in an attempt to see to it that not one tree would be removed from this forest. As time went along the forest became more and more sick, when the fire did come, the forest was lost.

Now, there is neither a healthy forest or a forest for the fanatic who did not want one tree to be removed to enjoy. Their kids will never enjoy this forest and neither will their

grand kids.

For more than a year now, Judy Epstein has committed hundreds of hours learning how to best prevent a similar occurrence on Mt Lemmon. And, has actively shared what she has learned. Her accomplishments are known and appreciated by most. Still there are a few resisting FireWISE principles. The most frequently declared rationale of these resisters is that they have survived other challenges on Mt. Lemmon, why is this any different?

I would like to address this with an analogy. Just because you have survived three car accidents when traveling at low speeds does not ensure that you will survive one at high speeds. NEVER in our history has the forest been this dry and fuel loads this high. We are now traveling at 150 miles an hour, in a car designed to go only 50. This is definitely the time to be sure the brakes and steering work and not the time for neglect. It is also the time to prudently get the speed of this car back down to the speed it was designed for. Otherwise, wrecking a car at 150 miles an hour seldom leaves a car repairable to go 50.

I beg the majority of you to continue with your efforts in saving the mountain. I beg even more, to those who are resisting, PLEASE STOP!

## FireWISE Information

by Judy Epstein

Our eyes are now wide open to the severity of the dry conditions and the reality of high fire risks on the mountain. We are very fortunate to now have this opportunity to do as much FireWISE activities as possible around our cabins and community. Hopefully the long uncertain wait and delay in getting access to our cabins has only strengthened our determination and efforts in safeguarding our mountain community for the rest of this summer and for all drought years to come!

For those of you who are just now paying closer attention to FireWISE topics, you may want to review past FireWISE articles printed in the Echoes. To access them online at [www.mountlemmonfire.com](http://www.mountlemmonfire.com), click "Echoes Articles" on the FireWISE page. For those who don't have internet access, a notebook of past articles will also be available to review onsite at the MLFD Station and the General Store. The most important actions to take right now is to clear pine needles from the roof, gutters and around your cabin, remove ladder fuels to a height of 8 ft., thin dog-hair thickets and safely store woodpiles out from under, away from all flammable structures and uphill from

your home if possible.

Also, better educate yourself! An excellent FireWISE videotape with 3 short segments (Wildfire! Preventing Home Ignition, Protecting Your Home from Wildfire and A Matter of Time) is available for free checkout at the General Store. (The first 2 segments are brand new!) Beginning on Sunday, June 23<sup>rd</sup> at 4:00 PM (estimating 1.5 hours) please come to the Fire Station and we will provide educational materials from pamphlets to computer programs, along with discussion and direction of the FireWISE program. Call DeAnna at 576-1202 with any questions.

#### The latest FireWISE bullets of info:

- **The next FireWISE meeting will be at 2 p.m. on Saturday, June 29<sup>th</sup> at the MLFD Station.** Since the Annual Water Board Meeting (open to all customers of the Water Co-op) is at 10 a.m. that same morning, a potluck lunch will follow the Water Co-op meeting, beginning roughly at 12:30 p.m. (Refrigeration will be available for those bringing perishable potluck dishes at 10 a.m.)
- **All Mt. Lemmon Residents are invited!! During the Potluck Lunch at 12:30 p.m. on June 29th, exciting and dramatic videos and photos of the Bullock Fire will be shown.** Several videos from people fighting the fire capture the intense events of Friday night, May 31<sup>st</sup>.
- **Zero tolerance for violations of the forest closure:** Tickets will be written on the spot. (No warnings!) Extra law enforcement will be added to parole the areas.
- **If you witness a violation, call the radio dispatcher at 670-4832 or 9-1-1 and provide details of the location.** We, as civilians have no authority to approach violators, but we can be the eyes and ears and tell those who do have the authority.
- **In an EMERGENCY, call 9-1-1.**
- **Donny Tapp, 576-1799, will be coordinating private cleanup efforts in the community.** Should you need assistance with FireWISE cleanup, there are sign up sheets available at the MLFD and the General Store. If you are interested in helping with cleanup efforts, call him as well.
- **A growing resource list of help for hire will be posted on the website and at the Mt. Lemmon General Store.** To add your name to this list, e-mail your contact info to Judy at nRichLife@aol.com or call Donny Tapp at 576-1799. Every effort will be made to keep the list current.
- **If you cannot take your needles and slash to the Dumpsters, place them in a clearing along the roadway, visible to the crews.** Whenever possible, please bag your needles.

- **Weekend cabin users: take your portable butane tanks up and down with you during the fire season.** The tanks can be used with extreme care while up on the mountain, but for fire safety reasons it is recommended that you not leave them at your cabin, inside or outside!
- **Know your street address** and write down the addresses of cabins around you. Provide your name, phone number and street address for an emergency 9-1-1 call to your cabin and provide directions with the best route to your cabin for access.
- **Make certain your address is readily visible.** Reflective numbers are available for free at the MLFD Station. You can post your address in more than one place.
- **Be prepared for an emergency evacuation.** Have those items you would need to take with you handy by the door. Clarify with other family members what to do should the air horn sound when you are separated.
- **In an emergency evacuation, tie your bright plastic strip in a readily visible spot when you leave your property.** These strips will let the Emergency personnel know that your cabin has been evacuated. These strips are available at the MLFD Station, if you did not find one at your cabin upon your first return.
- **Know all evacuation routes to the highway from your cabin.** Share the above information with anyone using your cabin in your absence.

## Fire Retardant May be the Answer!

by Judy Epstein

### Want to re-seal, paint or add further fire protection to your cabin?

My visit with Los Alamos Fire Department last year introduced me to fire retardant as a means to further help homeowners safeguard their structures. After having done all of the essential FireWISE cleanup tasks (removing pine needles from roof, gutters, and away from cabin and flammable structures; eliminating ladder fuels; safely storing firewood away from all flammable sources), the next step is evaluating the need for fire retardant. Roofs consisting of wood shake shingles are the most prone to catching fire. A single floating ember could potentially catch the roof on fire. Wood siding and structures (decks, fencing, furniture, etc.) that are readily susceptible to catching on fire from flames or embers will also benefit from use of a fire retardant.

I'm told there are several products available. My own research and the information I got from Los Alamos led me

to one such product called Flame Stop ([www.FlameStop.com](http://www.FlameStop.com)) which is easily accessible, thoroughly tested and highly rated. Last fall I got a trial sample of the product. With Fire Chief Dean Barnella's help, we tested the product on an old piece of my linseed oil soaked siding. (A short video of this was made and shown at the Annual Homeowner's Dinner.) For those who didn't see the video, we split the siding board into two pieces, treating only one with the Flame Stop. After 24 hours of required setting time, both pieces were exposed to a blowtorch. Both began to burn when exposed to the blowtorch. However, the flames of the treated piece self-extinguished within 5 seconds once the torch was removed whereas the untreated piece continued to burn and burn even after the torch had long been removed. This test satisfied me.

I was even happier when I learned that Flame Stop II is also a sealer and in our weather conditions will last 10 years. (Flame Stop III is added to paint for the same fire retardant qualities.) Rather than reapplying another mixture of linseed oil every few years and making my siding more flammable, this product will provide longer sealing properties with fire retardant properties. And unlike linseed oil, it is water soluble (easy cleanup!) and can be applied with a garden weed sprayer if need be, as well as any paint sprayer. It can also be brushed or rolled on. It loses its water-soluble properties during its 24 hour setting time, so as long as it doesn't rain within the first 24 hours after application, it is set.

This was an obvious choice for a sealer for us, so along with Bob Zimmerman and Sonni Wendt, we placed a group order, lowering our individual costs per gallon and our costs for shipping. The product arrived the week the Bullock Fire started. My husband and I (thanks to borrowed paint sprayer and Dwayne Durham's help on his 26<sup>th</sup> wedding anniversary!) were able to apply it to our cabin before we had to evacuate. Bob was also able to treat his property and the wood shake shingled roof of the Post Office. (For those who want to see what the "clear" appearance of the sealer looks like once it is applied, make arrangements to see my cabin or perhaps Bob will show you his.)

### Win-Win Opportunity for getting Flame Stop at the best rates!

Flame Stop comes in many forms but exterior protection on the mountain will be with Flame Stop II for a clear sealer use or Flame Stop III for an additive to paint. Flame Stop II can also be used on TREES such as THOSE GROWING THROUGH DECKS! For more technical information, visit [www.FlameStop.com](http://www.FlameStop.com) or call the number listed below.

### WIN-WIN opportunity Incentive for ACTING NOW!

A group buying and shipping plan has been set up for those interested in ordering Flame Stop II or III and benefiting from the buying power of other homeowners. To participate in this plan you will need to proceed according to the following list and act promptly (**Deadline is Monday, June 24, 2002 by 2 p.m.!**) so you'll have the product in time for the 4<sup>th</sup> of July holiday!

Here is what you will need to do:

- Place your order by 2 p.m. on Monday, June 24th by calling 1-877-397-7867, (Hours of operation, Tucson time, are Monday-Thursday, 6 a.m. to 2:30 p.m., Friday, 6 a.m. to 2 p.m.) Ask for "James", as he is the most knowledgeable about this plan. Others should be able to help if he is unavailable but make sure that they are aware of this ordering plan! (A copy of this exact info will be posted at their business.)
- Refer to the name "Judy Epstein" to identify yourself as a Mount Lemmon resident and to group your order with Mount Lemmon residents' orders.
- Arrange for credit card payment of your order. (The actual amount per gallon will be calculated after 2 p.m. on May 24<sup>th</sup> ~~when they know~~ the accumulated quantity discount price. You can always get an estimate as if you were to buy it on your own and know that it will be that or probably less because you will be eligible for a lower rate based on the accumulated quantities of the other participating homeowners. Please, be mindful, though, that you will still have your percentage of the shipping costs still to pay.)
- Pick up your order at Bed Mart, at 3739 N. Oracle Road during business hours. Shipment should arrive as early as Friday, June 28<sup>th</sup> or on Monday, July 1st—call ahead to verify, 887-0711. The reason for this location is that shipping costs are reduced \$75 when shipped directly to a business and a Tucson location is more economical than a Mt. Lemmon location. (I also could not find a location up on the mountain that could handle the details of this arrangement.) My husband, Chet Goldberg, has generously arranged for his business, Bed Mart, to provide the warehouse and staff to accept and store such a potentially large shipment order.
- Make a check payable to "Judy Epstein" for your percentage of the shipping costs at the time of pick up. (To make this arrangement possible, I will be paying the shipping costs on my credit card and getting reimbursement for your percentage of the shipping cost, which will be significantly less than you would pay if shipped as an individual order! I will have the calcu-

lated shipping percents for each order a day after the ordering deadline and it will also be posted in the warehouse with the product. Should you want to know your amount ahead of time, I can be reached at nRich-Life@aol.com or 760-2802.)

My husband and I already have Flame Stop II on our cabin and do not need to order any more. We are doing this because whatever improves the FireWISE conditions of the community improves the chances of the community's survival of fire. We are all in this together and together we can build a FireWISE community on Mt. Lemmon!

### FireWISE Clean UP

For those wishing to receive information on:

How to Hire Help.

How to find Jobs.

How to Volunteer Services,  
from advice to Labor

How to donate rakes, Gloves, Trash bags

Please contact

Donny Tapp

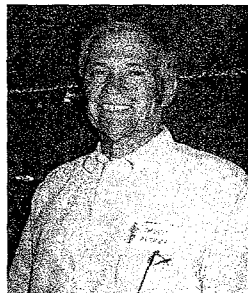
P.O. Box 581

Mt. Lemmon, AZ 85619

520-576-1799

## Mt. Lemmon Water Co-op

by Chuck Autrey



The annual meeting of The Mount Lemmon Cooperative Water Company will be held at 10 am on Saturday morning, June 29th at the Mount Lemmon Fire Department. There will an election of three new board members, a review of last years activities, an update of the current water situation and time for questions from the floor. If you are unable attend please make sure your proxy gets to the company or a member of the board so your vote will be counted.

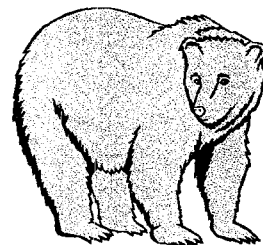
As I write this our available water in storage is about 70% of capacity and we're using it faster than we can replace it. We are currently requiring a mandatory use

reduction of at least 50%, but frankly we need to do better than that. Michael says this is the worst he's seen it in twenty years.

Some suggestions for conservation: Bring up your own drinking water; use paper plates, cups and plastic throw away eating tools; flush you toilets only when you can't stand it anymore; if you have to shower or bath, do it with a friend and save some water; Be creative with your conservation ideas as you have in years past and we will get through this crisis and still have a great, fun filled and enjoyable summer. Pray for and call in any markers that might result in some long steady rains. See you at the meeting on the 29th.

## EARTH WIND AND FIRE (ALSO WATER)

by Barbara Welsh



In the Last issue the big problem we faced was drought. Now we can see the results of a terrible fire on the mountain. Thanks to the heroic efforts of the firefighters we still have our cabins. I used the term "terrible" but in nature fire is not a terrible thing. For thousands of years it has kept people warm and cooked their food. In small doses it clears out the dead and fallen needles, leaves, and other things that can cause the large fires and devastation. We are in the midst of a drought, and would welcome any rain, but in the Midwest they are having floods that are taking their houses, businesses and livelihood. There are tornadoes; earthquakes and volcanoes that make us realize we are not really in total control of our fate. All these are part of nature and for years people have lived with the possibility of nature going on a rampage. How many years have we been told of the possibility of a fire on the mountain? But, Californians still build their cities on earthquake faults; towns spring up at the foot of volcanoes; and most cities are built by periodically overflowing rivers.

What about the animals? If the fire had burnt quickly over the ground and was not too hot or lasted too long (as in the roadside controlled burns) many of the smaller animals (chipmunks, field mice, moles) would survive in their burrows. ? Many of the larger animals may have just left the area of the fire. They may have wandered into another animals territory and been chased out but because of the drought, food is going to be a problem for them. There have already been reports of bears and mountain lions near the village but we hope they are afraid of humans and will find another place to live. Please don't

feed these animals or leave food where they can find it, as you are not helping the animals by allowing them to become dependant on humans.

Now we shall watch the true wonders of nature as she rebuilds and repairs the scarred and injured earth. First will come the small grasses and flowers, then some of the smaller bushes and trees and finally the trees that are dependent on fire to germinate and reproduce themselves.

### THINK RAIN

Dennis Cozzetti will haul your "Bagged" pine needles away for free —Just call (520)-323-7700 and leave a message

### Calendar

**Hiking** Postponed until Forest is opened  
**Litefest** Saturday nights remaining this summer  
**Kids Club** Cancelled for the Summer  
**Community Flea Market** Postponed  
**Flame Stop Orders** Deadline June 24th 2:00 PM  
**Flame Stop Pick Up** June 28th (approx.)  
**Water Co-Op Meeting** June 29th 10:00 AM  
**Potluck Lunch** June 29th 12:30 PM  
**FireWISE Meeting** June 29th 2:00 PM  
**Parade-** 4th of July 12:00 PM  
**Mt Lemmon Pie Auction** July 7th  
 1:00-3:00 PM  
**Bunko** July 13th, 6:00 PM  
**FireFighter's Benefit** -July 20th  
**Mt Lemmon Arts, Crafts & Psychic Benefit**  
 tentatively rescheduled for August 11th  
**Bluegrass Music**  
 tentatively rescheduled for August 11th

## MT. LEMMON WOMAN'S CLUB

by Luann Waldron

The Mt. Lemmon Woman's Club tea originally scheduled for June 8<sup>th</sup> was **POSTPONED** until we can determine a more appropriate date. Probably after the rains come and the mountain is again evergreen fresh. Let us all pray for our brave firefighters and keep a positive attitude

that our community will survive. It is so wonderful the way our community has supported each other and the fire fighting agencies. These trials will eventually make our community a stronger and a more caring community. Each of us will probably appreciate that first weekend (hopefully soon) on our deck just a little bit more.

Our last monthly meeting was well attended at Linda Benzinger's home. The guest speaker talked about the significance of dreams in relationship to our lives.

## 3rd Annual Mt Lemmon Light Fest 2002 & UPTOWN SUMMER SUNDAYS EVENTS

by the MLCECs

The annual Lighting Contest & Lightfest started June 1st without us. Seems the Bullock Fire had a light show all of it's own planned. No contest - it wins, hands down! You can still decorate your cabins and businesses with lights for the Saturday nights remaining throughout the summer. It will be like leaving a very bright light in the window to let everyone know that Mt Lemmon survives and that we fully support all aspects of our community. All the June Mt Lemmon "UPTOWN " summer events are being postponed to July and August - tell the kids that Santa & the Easter bunny are fine and will greet them at a later date, probably in July. They need to rest after helping protect the village from the fire. The Sunday, June 9th **Mt. Lemmon Art, Crafts & Psychic Benefit Fair** and the annual June 30th **Bluegrass Music** events will be combined and are rescheduled for the tentative date of **August 11**. The Summerhaven Community Flea Market is postponed to a future date, (depending on the weather) for sometime in late July. Thank goodness we didn't have to call it a fire sale! We should have firm dates by the July issue of the Echoes. We also want to thank the **Tucson LifeStyle** magazine for listing the MLCEC summer events in their May issue of the magazine.

The **Sunday July 7th, MLCEC Pie Auction** is still on schedule and open to the public from 1 PM to 3 PM. Located at the Alpine Lodge in the upstairs "pie room" will be tables set up with "ALL VARIETIES OF PIES". Selections will include delicious homemade pies, store bought pies, and some very creatively packaged and decorated pies. Some pies will come with fancy extras like fancy pie stands, gift certificates, and very large adornments. All will be displayed by each pie for visual stimulation. There will be a silent bid sheet in front of each pie listing the chef, the type of pie, and any "extras" that accompany the pie for



auction along with a fill in bid sheet for marking in "silent bids" from the public. **RULES for the SILENT AUCTION Pies** - Want to donate a pie for a worthy cause? The cause is the Mt Lemmon Fire Department! All pies for the silent auction must be delivered to the Alpine no later than 11 AM that Sunday morning. Arrangements can be made for delivery of pies the night before, and for "refrigerator" pies. Door opens for silent auction bidding at 1 PM, and all bids must be made by 3 PM when bidding will be closed, and the highest bid will take the pie. If the highest bidders do not "claim" their winning bids by 3:30 PM, the pie will go to the next highest bidder. All pies must be picked up no later than 4 PM. **All donations from winning bidders go to the Mt Lemmon Fire Department - make your checks out to Mt Lemmon Fire District.** All donations to the MLFD are tax deductible. Pie auction sponsored by the MLCECs and the Alpine Lodge. If you'd like to donate a pie to the silent auction or have further questions, contact Patty Thomas 749-1036, 576-1616 or Dani 298-6328 (leave a message).

## Mt. Lemmon Ski Valley

by J Davis

Mt. Lemmon Ski Valley is alive and kicking ! Skyride, Iron Door, Miner's Sweet Tooth, the Motherlode and the Grub Stake are all open and would be delighted to see you all. Like the rest of the mountain, there is absolutely no hiking or wandering around. Trails are closed and the top of the lift is fenced off.

The Iron Door continues to offer a great breakfast on Saturday and Sundays from 9:00 to 11:00. The chili is still great as are the soups and sandwiches.

Call for nighttime events.

The Motherlode has some fun lady bug merchandise as well as a whole batch of new t-shirts and gift items. Come check out the new teddy bears. See you on the mountain !

Call for days and hours of operation 576-1321.

**Karen's Cabin Cleaning**  
**\$20 hourly**  
**Please leave a message At**  
**576-1333 Box 3**

## Mt Lemmon FireFighters Appreciation Bar-B-Q at Alpine Lodge 6:00 PM

Mt. Lemmon Homeowners Association would like you to come out and show your appreciation for all the work our firefighters did for us to save our community from the Bullock Fire.

Dinner will be B-B-Q pork ribs or Chicken and all the fixins for \$17.

RSVP your choice of ribs or chicken to John Mulay 327-4615 by Sun, July 7th so Don will know how much to Order.

## Bunko -July 13 th Summerhaven Coffee House 6:00 PM

Your choice of :

Southwest marinated pork chops w/chorizo cornbread stuffing or Grilled Cilantro Marinated Chicken w/Goat Cheese Pesto & Black Bean sauce.

RSVP Linda Mulay 327-4615 by July 7th

All membership dues are now past due. If you'd like to remain on the mailing list, please mail your dues today! The Echoes is the publication of the Mt. Lemmon Homeowners Association for its membership. Membership dues are \$25 annually. Renter and Friends of the mountain may obtain an association membership for \$20. Send your checks to MLHO, P.O. Box 699, Mt. Lemmon, AZ 85619. This Echoes is brought to you courtesy of the Mt. Lemmon Homeowners Association. It's one of the benefits of being a member.

Board members are Ross Quigley, Franny Crowe, Kathy Shields, Carrie Reitz, Fran Zimmerman, Florence Wilhoite, John Mulay, Pete Krauss, Tom Thomas, Chet Goldberg, Don Underhill, Jim Connolly and David Ostapuk. The editor of the Echoes is Gordon Hunter. This is my first issue, so please excuse any errors. I'll get better. If you have any suggestions or comments, I can be reached at 576-4377 or by Email at [gnhunter@mindspring.com](mailto:gnhunter@mindspring.com).



**MT LEMMON GENERAL STORE & GIFT SHOP**

*PHIL & CAROL MACK*

Cabin For Rent  
Gift Shop  
Groceries  
General Store  
Homemade Fudge

P.O. Box 754 520-576-1468  
12856 N. Sabino Canyon Parkway 520-576-9375  
Mt Lemmon, AZ 85619-0754 FAX

**George R. Reitz**  
Realtor®  
Multi-Million Dollar Producer

**LONG REALTY COMPANY**

Office 520 790-7320  
Fax 520 790-7574  
Toll Free 800 280-7320  
Hm. Off. 520 722-1265  
7810 E. Broadway, Tucson



**Aspen Trail**  
Bed & Breakfast  
Mountain Hideaway

Hosts: Alex & Char Carrello  
Phone: 576-1558

P.O. Box 572  
Mt Lemmon, AZ 85619

**OLD ADOBE REALTY CO.**

**MISTIE M. QUIGLEY**  
REALTOR

Office (520) 322-5050 Ext.155  
Cell (520) 235-5121  
Fax (520) 322-9698  
1 (800) 216-6044

2870 N. Swan Road #160  
Tucson, Arizona 85712  
E-mail: mistieq@excite.com

**Mt Lemmon Suites  
& Fine Crafts  
& Village Market**

(Please identify yourself as a homeowner or resident to qualify for 10% discount in Village Market)

12880 N. Sabino Canyon Parkway  
TEL: (520) 576-1664  
Owner: Sonni Wendt

**Janet**  
Fayleen LMT, BSW  
Health Therapist

(520) 884-4222

- Deep Muscle Therapy
- Injury Rehabilitation
- Reflexology
- Posture, Movement, & Flexibility Training
- Swedish Massage
- Lymphatic Massage
- Sports Massage

Gift Certificates Available

**CHECKERED FLAG CARPET CLEANING**

Dennis Fetter  
Owner/Operator

Office 298-9119

\*Digital Pager 793-1363  
Mobile 419-2325

9257 E. Colette  
Tucson, Arizona 85710

\*All pages returned within 10 minutes

Quality, Guaranteed, Expert Cleaning • Licensed and Insured

**MADSON, BROWN & ASS.**

**EDWARD A. MADSON, SRA**  
Certified Residential Real Estate Appraiser

1735 E. Ft. Lowell, #9  
Tucson, AZ 85719

(520) 318-6000  
FAX (520) 318-6006

**Santa Fe Southwest Designers**

Specializing in The Latest  
Southwest & Western Furniture  
Consultations and Decorating

**LYNN PETERMAN**  
8946 E. Calle Kuehn  
Tucson, AZ 85710

Off: 520-885-3211  
Mob: 520-370-7604  
Fax: 520-546-0575  
Call for Appt.

**Cozzetti Construction, Inc.**

Dennis Cozzetti  
3849 E. Calle de Soto  
Tucson, AZ 85716

phone 323-7700 fax 323-7733  
pager 620-2708

AZ License #128028 AZ Tax ID#10-177611-W

**Summerhaven  
Coffee House**

**Jim Bredice**

Chef & General Manager

12872 N. Sabino Canyon Pkwy  
Mt. Lemmon, AZ 85619

(520) 576-1586

(520) 576-1333  
(520) 576-1334 (RES.)  
(520) 576-1300 PHONE/FAX

**MOUNT LEMMON REALTY, INC.**  
mtlemmonrealty.com

FRANCES E. ZIMMERMAN  
Sales Assoc./Property Mngt.

P.O. BOX 1  
MT. LEMMON, AZ 85619-0751

bobzim@mindspring.com

(520) 576-1333  
(520) 576-1300

**MT. LEMMON REALTY**  
mtlemmonrealty.com

ROBERT T. ZIMMERMAN  
Broker

P.O. BOX 1  
MT. LEMMON, AZ 85619-0751

bobzim@mindspring.com

(520) 576-1333  
(520) 576-1300  
(520) 299-126 (RES.)

**MT. LEMMON REALTY**

ALAN LAWSON  
Sales Associate

P.O. BOX 1  
MT. LEMMON, AZ 85619-0751

**C.R. BIRCH**

**EXCAVATING & GRADING**

"We dig our work"

RICK BIRCH  
Owner

Office 749-2902  
Mobile 405-8836

**Sky Island Construction LLC.**

Specializing in

Building and Remodeling of Cabins and Homes

Licensed  
Bonded

Gregg Ferguson  
471-6322

**SUMMIT REALTY**  
altitude is everything

Dick Bloomfield  
Broker

p.o. box 611 • mt. lemmon, az • 85619 • (520) 576-1632 • fax (520) 576-1391

**SUMMIT REALTY**  
altitude is everything

Cornelia (Neil) Bloomfield  
Associate Broker

p.o. box 611 • mt. lemmon, az • 85619 • (520) 576-1632 • fax (520) 576-1391

**ARIZONA-TERRITORIAL**  
termite & pest control co.

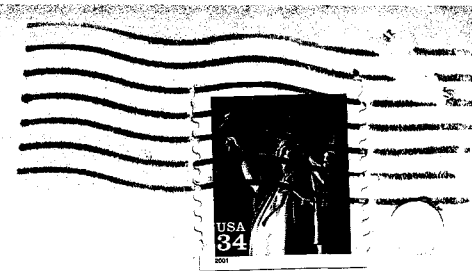
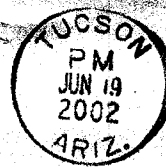
State Licensed 173 • Insured  
#1 2049 BC

Home Inspection Report  
VA & FHA Termite Wood Infestation Report

**KEN VAN ZANDT, Owner**  
2569 E. FT. LOWELL  
TUCSON, ARIZONA 85716

PHONE 881-8535

Mt. Lemmon Homeowners's Assoc  
P.O. Box 699  
Mt. Lemmon , AZ 85619



Larry & Luann Waldron  
4470 N. Cerritos Dr.  
Tucson, AZ 85745

B3745+3336 01

