

The

Mt. Lemmon Echoes

Serving the Homeowners of Mt. Lemmon

HOLIDAY SPIRIT REACHES ITS PEAK ATOP MT. LEMMON

by the MT. LEMMON
BUSINESS ALLIANCE

First Annual "Winter in Summerhaven" Festival Begins November 30; Proceeds From Raffles to Benefit Elementary School!

It may be sunny and 75 degrees in downtown Tucson, but forty-five minutes north, the streets of Mt. Lemmon's

Summerhaven are aglow with twinkling lights, toasty bonfires and the sparkle of tinsel-topped trees.

In the spirit of an old-fashioned, small town celebration, members of the Mt.

those who enjoy the mountain as much as we do," said Vic Zimmerman, owner of Mt. Lemmon Cabins and Cookies. "We hope the festival will become a Summerhaven winter tradition, just as the lights in Winterhaven have become a holiday favorite downtown."

Highlights of the festival include: a tour of holiday lights and decorations along Main Street, music and caroling around the bonfires, raffles for prizes ranging in value from \$5 to \$150, free hot chocolate, and the chance to catch up on holiday shopping at several of Summerhaven's unique businesses.

Zimmerman Elementary School students will help sell the 50 cent raffle tickets, with proceeds being used to purchase much needed equipment for the school.

Admission to the festival is free and open to the public.

passes. If you have a pass you will slow your vehicle enough so that one of the station attendants can see the pass and you will proceed without stopping. If you do not have a pass, the vehicle must stop and either purchase a pass (daily or annual) or state that you will not be accessing any non-highway *national forest land*. In the latter case, you will be waved through without a fee.

Enforcement becomes a larger issue under this system than in the case where all visitors must pay; however, we believe this is not an insurmountable problem. We will be patrolling all parking areas, vista points, trailheads, etc. to contact non-paying users. Those persons accessing the forest lands during periods when the station is not being staffed will be expected to purchase a pass at one of several self-serve sites on the mountain. Given that most of the collected revenue will be used for improving facilities and user safety, it is our hope that the majority of visitors to the forest will willingly pay.

In order to reduce the line of those vehicles without passes and to reduce the necessity of enforcement, we are considering a lower cost for the annual pass than originally anticipated. Although this is still being discussed, an annual fee of about \$20 is likely. For frequent visitors to the Santa Catalinas, this is a very reasonable fee. (Some of you may have read that under that same Congressional authority as the Catalina pilot project, the Grand Canyon and other national park sites have greatly increased user fees. Daily fees have gone from \$5 to \$20 at Yosemite and annual passes from \$15 to \$40 at a number of locations. The actual location of the Santa Catalina fee station is also still under review. Upon further engineering analysis, a strong case has been made for the Babat Duag site as preferable to the Molino Basin site.

No final decision has been made on this. The Babat Duag site can apparently be modified for fee collection at considerable less cost than the Molino site. The forest has received an allocation of funds from our national and regional offices to develop the fee collection station thereby assuring that the collected fees will be

the first annual "Winter in Summerhaven" festival, to be held every Saturday beginning Nov. 30 through Dec. 21st from 4 to 8 p.m. and include: a tour of holiday lights and decorations along Main Street, music and caroling around the bonfires, raffles for prizes ranging in value from \$5 to \$150, free hot chocolate, and the chance to catch up on holiday shopping at several of Summerhaven's unique businesses.

SANTA CATALINA MOUNTAIN USER FEE UPDATE

by Tom Quinn

A number of things have been happening regarding the pilot project to charge user fees for use of national forest land in the Santa Catalina Mountains. Forest Service representatives from the Coronado National Forest and the Southwest Regional Office in Albuquerque met with officials from the Federal Highways Administration in Phoenix a few weeks ago. The two agencies are in agreement over the value of the user fee program and the efficiency of a single user fee station for the collection of those fees as opposed to separate collection facilities at each individual site. We then focused on the actual logistics of collecting fees while minimizing impacts to residents, businesses, and those visitors who are not using national forest lands off of the highway surface.

At this time, planning is proceeding with a fee collection station which will have a lane for all vehicles with passes (resident, business, employee, annual, etc.) and a separate lane for those vehicles without

Lemmon Business Alliance have teamed up with students from Zimmerman Elementary School to sponsor the first annual "Winter in Summerhaven" festival, to be held every Saturday beginning Nov. 30 through Dec. 21st from 4 to 8 p.m.

"Summerhaven's old-fashioned fourth of July parade has always been a big hit, and this year we thought we'd light up the town for the holidays and say thanks to all

effectively used to improve local conditions.

Obviously, with a major new proposal like this we still have many unanswered questions. WE are all learning as we go and this learning process is at least in part what Congress had in mind when they set this program up as a trial pilot. They are so enthused by the program they have directed each of the four primary land management agencies to select an additional 50 sites per agency to be included in the pilot. They have also extended the ending date of the pilot program to September 30, 1999. It will be reviewed for possible continuation at that time. We will do all we can to keep you informed as we implement this project. Please do not hesitate to give me (Tom Quinn) or Paula Huter a call (749-8700) if you have any questions.



By Chief John Roads

Run Update - 1996 continues to be a slow run year. As of the 26th of November, there have only been 7 calls for November (1 multi-agency fall injury at Windy Point, 1 sledding injury, 1 sick person, one smashed finger, 1 fire alarm, 1 illegal burning of pine needles, and 1 forest fire at Sykes Knob). Yes, even after the 2 ft. of snow, over the Halloween weekend, the forest is still capable of burning.

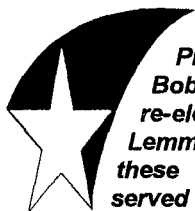
Last article I stressed the need for proper heating and fire place servicing to prevent fires. I stress this again. And I will stress again the need to take proper precautions in disposing of fire place ashes. Ashes can remain hot for several days. Hot ashes dumped into the yard can easily set pine needles on fire. The needles can spread the fire back to the cabin. It has happened several times before. I would like it to not happen again.

The recent prescribed burn near the Middle Sabino cabins was a huge success. The Forest Service conducted the burn from the highway near Sykes Knob, north to the Middle Sabino area, west to Marshall's Gulch, and south towards Fern Ridge. The fire consumed

more fuels than was expected which is good for both forest health and fire hazard reduction. One important note: the fire burned the two days prior to the 2 foot snow. After the snow melted (a week later) one spot in the burn area was found still burning. Do not assume that snow or some rain is going to completely eliminate the potential for fire. Always assume that the needles can burn and properly dispose of your ashes.

Are you ready for more good fires? We are currently in the planning stages for a prescribed burn inside the village. As a test program, we will attempt to conduct a 2 acre burn in the area of Ray Ave. We will be in close contact with all affected homeowners as the plans develop. Meanwhile, the conditions are good to do some small pile fires. Remember that it is illegal for homeowners to burn their own needles, however, it is legal (with procedures) for a governmental official to conduct burns for the purpose of fire hazard reduction. I am a governmental official. Therefore, I can light the appropriate fires. If you currently have a needle pile already made, or you want to rake your yards, please call me at the station (576-1201) and we will make arrangements to come in and burn the piles. Later, after the 2 acre test burn, we will make plans to burn off smaller sections of vacant properties to aid in reducing the village fire loading. Reducing the loading is the only way we can attempt to control a major fire in the hot dry times of the year. Your assistance and cooperation will be greatly appreciated. As I've said in the past, we can burn the village in one fast hot afternoon or we can do it slowly, one pile or lot at a time. I vote for the slow method. (The Flagstaff Fire Department has already preformed three prescribed burns since July within the city limits of Flagstaff and are planning more to reduce the fire danger in local neighborhoods from surrounding forests.)

MLFD will have a fire truck on hand for the Saturday Night "Winter in Summerhaven" bon fires. Stop by and say Hi! Please have a safe and happy holiday season.



Congratulations to Phil Archambault and Bob Zimmerman in their re-election to the Mt. Lemmon Fire Board. Both these gentlemen have served the board well in the past, and along with board member Fred Pace, the community can expect a superior effort from their elected fire board.

**Thank
you**

The Mt. Lemmon Fire Department would like to thank everyone over the last year who has contributed time and energy into making this fire department the

success it has become. In no particular order, we'd like to thank these families who have contributed: the Shirleys, the Cavendars, the Paces, the Chestnuts, the Hinsches, the Greths, the Pollocks, the Ruggs, the Huggins, the Bloomfelds, Joan Klinger, Vic Zimmerman, the P. Thomas', the Garcias, the Mt. Lemmon Womans Club, the Simonsens, the Water Co-op and all the part timers and volunteers who help make this station work! If we forgot to mention you, please forgive our oversight. Just know in your hearts that we couldn't do it without YOU!

Ski Patrol Raffle

Stop by Ski Valley, or talk to Pete Krauss or John Mulay about buying raffle tickets to enter to win a round trip airline ticket, vacation packages at Mt. Lemmon, Dynastar skis, season ski passes, snowboard/ski clothing, or Tyrolia ski bindings. The raffle tickets are \$2 a piece three for \$5 or seven for \$10. The drawing is January 6th, 1997 and you need not be present to win. But you can't win if you don't buy a raffle ticket! Support Mt. Lemmon Ski Patrol and win a round trip airline ticket!



1996 Mt. Lemmon Ski Patrol Raffle

Enter to Win these great prizes - and more!!

Roundtrip Airline Ticket - Bon Voyage Travel
Vacation Packages at Mt. Lemmon
Dynastar Skis - Peter Glenn Ski & Sports
Season Ski Pass - Mt Lemmon Ski Valley
Snowboard/Ski Clothing - The Shredding Edge
Tyrolia Ski Bindings - Arizona Ski & Golf

Drawing Jan. 6, 1997 - Need not be present to win
\$2.00 each, 3 for \$5.00, 7 for \$10.00

KEEP THIS STUB

ZIMMERMAN SCHOOL NEWS

by: Michael Moilanen, teacher

Zimmerman students have been busy. On October 18th, we visited the Arizona Sonora Desert Museum. We have only have 10 students but we had 23 people attend the field trip. The Museum was kind enough to let our people attend at no charge.

One hundred percent of the Zimmerman parents attended the first quarter parent/teacher conferences.

For Halloween, the students learned about face painting from Kathy Early a professional clown. Charlotte Watts culminated her French class with a food tasting party. She brought in all French foods and the students sampled the bread, meat, cheese and vegetables found in French homes. Janelle Miranda, Kathy Early and Charlotte Watts provided the students with experience in cooking pumpkin bread and pizza. Our first edition of the school newspaper was published. Area merchants supported our effort generously and we thank them. Our aluminum can recycling program is under way through a five hundred dollar grant

Water Co-op News

History Continued - Warning! This section of the of the Mt. Lemmon Water Co-op history may cause high blood pressure.

CONFLICT WITH FOREST SERVICE AND SIERRA CLUB

Summary of Recent Problems Regarding USFS:

1) The USFS was drawing more water out of the Upper Sabino source than they had total rights to use. 2) The USFS was transporting water out of the area where their rights stipulated that it to be used. Current Status: Continuing but with lower amounts. 3) The USFS filed an flow application that would require a minimum flow be maintained in Sabino Creek. At the same time they were transporting water beyond the point where instream flow would be measured. Current Status: Continuing but with lower amounts

4) The USFS was diverting around the POD for the Cooperative water rights. Current status: Stopped but with temporary means. 5) Changes by the USFS occurred after the Cooperative began legal actions.

Instream Flow Considerations

The Sierra Club filed a Sabino Creek flow application in July 28, 1987. The USFS filed a similar application one week late on August 3, 1987. The USFS chose to have the Sierra Club become a co-applicant and used the Club's earlier filing date. The ADWR has told the USFS that the Sierra Club has "no valid interest" (the USFS is the land owner) and told them to remove the Club from its application. As of mid-February, 1996 the USFS has not done so. The flow application requests that a specific amount of water flow in Sabino Creek be maintained or returned to the Creek. The requested amount exceeds typical flows in the stream for portions of the year.

The instream flow is to be measured by two gauging stations:

1) The "upper gauge" is located about one mile below the village and 2) the "lower gauge" is located one half mile above the Sabino Visitors Center. (This is important because the USFS is presently taking out some water above the upper gauge station and transporting it to areas where it is returned below the upper gauge station. Thus, that water cannot be adequately measured as a part of the amounts to meet proposed flow requirements.)

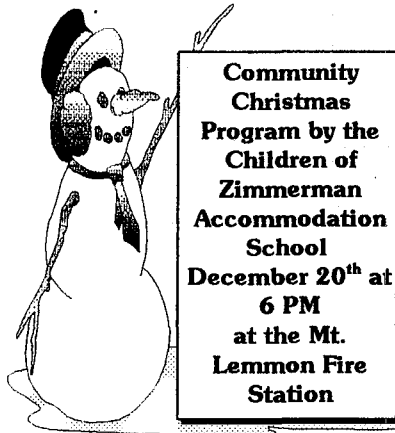
The following is from a Memorandum from Kathy Jacobs, ADWR, Tucson AMA dated July 27, 1995:

"The Co-op is concerned that the flow application will require them to maintain water flows in Sabino Creek while the USFS, who is the applicant for the flow (originally filed by the Sierra Club, but the

USFS is the landowner) is increasing their diversions out of the watershed that drains into the instream flow area. All water diverted to Spencer Canyon and below goes back into Sabino Creek below the upper gauge and is therefore diminishing flows above the upper gauge. Bear Wallow Creek is above the gauge. Return flows from the administrative site and the camp areas do not support the flow because they enter below the gauge. The Co-op contends that the USFS actions are therefore damaging to their own flow application.

A small number of cabins served by the Co-op also have their discharges outside of the Sabino watershed. Out of 350 Summerhaven hookups, up to 42 are on a sewer line that empties, as the result of a Federal mandate into the San Pedro (four of these are large volume commercial hookups). There are also several cabins that have septic fields that discharge into the Canada del Oro. There are currently several types of applications before the Department. The USFS and Sierra Club filed the instream flow application; this was protested by Bob Zimmerman and the Co-op. The USFS has filed applications for sever and transfer to resolve the point of use issues; these were objected to by the Co-op. Bob Zimmerman, the Co-op and the USFS have all made applications to increase their appropriations for current and future use. The Sierra Club protested the Zimmerman and Co-op applications but not the USFS applications. Bob Zimmerman has protested the USFS applications. Because of the interrelated nature of these issues, they need to be resolved concurrently.

The applications to appropriate new surface water for Mt. Lemmon Co-op are from existing springs (Upper Sabino Creek, #33-94325.56 AFA for municipal use [18,248,832 Gpa], and Pigeon Spring Wash #33-94326, 67.2 AFA [21,898,598 Gpa] for municipal use). The USFS application to increase diversions is from Dead Fir Spring, #33-94237.4.1 AFA [1,344,540 Gpa] domestic use, and 1.3 AFA [449,670 Gpa] for recreation). The Co-op and USFS agreed that they need storage for a 3 month summer supply in order to protect the flow. In 1990 the Co-op installed 283,000 gallons of storage on the Loma Linda side of the system, and has plans to put in a new 1 million gallon tank on Miner Ridge if funding can be found. The USFS recently constructed a new 341,000 gallon Whitetail Tank. They have indicated that they will probably withdraw the sever and transfer applications if the Loma Linda well [located in Upper Sabino Creek] and new Whitetail storage tank work. The USFS has



from the Arizona Department of Commerce. Until receptacles can be placed around Summerhaven, cans may be dropped off at the school.

While we have been busy, we have exciting things to look forward too. Our DARE program starts soon, Spanish has a culminating party, a Thanksgiving dinner on November 27th with the drawing for the winner of the "Name that Student" Contest, and our culminating event for 1996 will be a community Christmas program, December 20th at the Fire Hall.



also indicated that the Rose Canyon campsite could be served by its own well and distribution system which would avoid those diversions from the Sabino Creek system into the Bear Canyon system. However, there are severe funding limitations and a lack of support with the USFS to make this change. The Co-op took over the operation of the USFS system in 1985. There were major leaks in the line that were repaired in 1987. There have also been major losses associated with General Hitchcock Highway road construction and failure to turn off the pump for the USFS system which resulted in tank overflows downstream. There have also been major leaks within the campground system in the past. The USFS maintains that their 1995 diversions from the Summerhaven area are 50% lower than the 1994 diversions, and that this improvement should be beneficial to maintenance of instream flows."

Conclusions:

Recent changes in the USFS diversion practices have eliminated the basic concern that the Cooperatives's diversion at Upper Sabina Spring was being passed by with overflow from the [USFS] settling tank. The USFS also recently disconnected Kinglet Spring from their system. Permanent improvements should soon be in place to avoid the diversion problem. There is still some disagreement over whether pumpage at the Loma Linda well is affecting the diversion capacity for the Cooperative. However, the main reason that the USFS is maximizing the use of this well is to minimize the use of surface water rights in locations which are not listed as places of use. The Cooperative is objecting to the sever and transfer applications that would correct this problem. (Mike Stanley notes that the sever and transfer of Kinglet and Flicker is not enough water to operate the USFS system, and the Dead Fir application to appropriate will harm the instream flow due to transport out of the upper watershed. The Cooperative feels the sever and transfer would not correct the USFS problem, because there is still a need to use those rights in the upper areas, including the picnic grounds and summer homes within the reaches of the upper gauge.)

The water rights, diversion points and distribution systems of the two entities are totally intertwined. The legal issues of the various applications on the mountain are very complex, but it is likely that the physical problems could be resolved to everyone's benefit through cooperation of the parties. There seems to be general agreement regarding the facts of the diversion system and a

field trip resulted in a shared vision of what is actually on the ground. Water supply on Mt. Lemmon is totally controlled by precipitation patterns; shortages are the rule, rather than the exception. It is extremely important that the resources be managed conjunctively to ensure an equitable distribution of the supplies and protection of downstream uses.

Continued in next issue in Feb 1997

The Mt. Lemmon Water Co-op wishes you a safe and happy holiday season - think snow!

Wish List for Water Co-op:

we are in need of these items to be donated

- *file cabinets
- *a conference table
- *a copy machine
- *an office fax
- *a computer monitor
- *pipe wrenches
- *pipe threaders
- *volunteers to help paint storage shed and complete the enclosure of our workshop
- *OSHA approved diesel and gas tank

if you can help in any way, contact a member of the Water Board or Mike Stanley

SUMMERHAVEN PIONEER TONY ZIMMERMAN DIES

He made his first trip to Mt. Lemmon to hunt deer in 1937. Tony Zimmerman thought Mt. Lemmon was the best place in Arizona, and after retiring from teaching, invested in a second career that included operating a saw mill, and an inn, as well as selling real estate in Summerhaven. During his time on the mountain, Tony also ran a bus service, opened the first post office, and a restaurant. Many "old timers" recall the pies, movies, dances and Sunday church services at the Mt. Lemmon Inn, one of several lodges Tony and his wife Sena owned on Mt. Lemmon. Most of the early cabins were made of wood milled at the old saw mill, Tony owned and operated. The sawmill was purchased in New Mexico

and brought up the mountain piece meal to be reassembled by Tony.

Tony Zimmerman changed the face of Mt. Lemmon by bringing water, phone service and electricity to the community.

"He didn't drink and he joked that he had his last cup of coffee in 1898" son Bob Zimmerman said.

Tony Zimmerman was born in Ottawa, Kansas on November 21, 1893. Just shy of his 104th birthday, Tony was preceded in death by his wife, Sena (1985), and his oldest daughter, Marjory Farmer (1996). He is survived by four children, Mary Ellen Barnes, Norma Marquard, Bob Zimmerman and Franklin Zimmerman, as well as 15 grandchildren and 7 great grandchildren. Tony Zimmerman will be missed by all those whose lives were touched by him, and by the mountain he cultivated to be a little bit of heaven on earth.



Tony Zimmerman

Camille Janos, 86, formerly of Tucson and Mt. Lemmon, passed away November 14th, 1996 in Pocatello, Idaho after an extended illness. She was born in Santa Barbara, California on October 26, 1910. She spent many summers at her cabin on Mt. Lemmon with family and friends.

Next Issue Comes Out in Feb 1997

Thanks to all who contributed help and donations at the October Pancake Breakfast. The MLHO Association had a great 1996 - hope you enjoyed this years Echoes! Happy holidays and a successful New Year.

Your editor,
Dannie Hayhurst



(602) 576-1333 OFF.
(602) 576-1512 RES.
(602) 298-8328



MT. LEMMON REALTY

DANIELLE HAYHURST
Sales Associate
NOTARY

P.O. BOX 1
MT. LEMMON, ARIZONA 85619

Mike Foster
President



ARIZONA
PROFESSIONAL
PLUMBING, INC.

Thank you for using this Corporation

Licensed
Bonded
Insured

Phone: (520) 721-9699
24 hour service
Residential
Commercial

7949 E. Lakeside Pkwy
Suite 211
Tucson, AZ 85730

576-1333
576-1300



MT. LEMMON REALTY

ROBERT T. ZIMMERMAN
Broker

P.O. BOX 1
MT. LEMMON, AZ 85619-0751

Affordable Computer Service

Repairs * Upgrades * Troubleshooting
Internet Support and Training

Kim Price
520-749-5916

kp@primenet.com

CHECKERED FLAG CARPET CLEANING

Dennis Fetter
Owner/Operator



Office 298-9119
*Digital Pager 793-1363
Mobile 419-2325

9257 E. Colette
Tucson, Arizona 85710

*All pages returned within 10 minutes

Quality, Guaranteed, Expert Cleaning * Licensed and Insured

576-1333
576-1300



MT. LEMMON REALTY

FRANCES E. ZIMMERMAN
Sales Assoc./Property Management

P.O. BOX 1
MT. LEMMON, AZ 85619-0751

HARVEY JANSEN
Certified Public Accountant

HARVEY JANSEN, CPA
4803 E. 5th Street, Suite 205
Tucson, Arizona 85711
Phone (520) 325-9558
Fax (520) 325-9578

The Living Rainbow, Inc.

P.O. Box 753-S
Mt. Lemmon, AZ 85619
(520) 576-1519
1-800-858-6364 Outside AZ
Debbie Hardesty

Windchimes & Gifts Since 1979



Aspen Trail Bed & Breakfast Mountain Hideaway

Hosts: Alex & Char Carrillo
Phone: (602) 576-1558

P.O. Box 572
Mt. Lemmon, AZ 85619

PHONE 889-9593



Geo. Reitz Construction
(LANG-REITZ CONSTRUCTION, INC.)
LICENSE #42845 AND #68875

GEORGE REITZ
Owner

3390 E. MILBER
TUCSON, AZ 85714



Mary Moran
Agent

p.o. box 611 • mt. lemmon, az • 85619 • (520) 576-1632 • fax (520) 576-1391



Rosano's Piano Service

ENRIQUE R. ROSANO
Registered Piano Technician

(602) 747-1903
6917 E. Calle Jupiter
Tucson, Arizona 85710



George R. Reitz
Realtor®
Multi-Million Dollar Producer

OFFICE (520) 790-7320
FAX (520) 790-7574
RESIDENCE (520) 323-8948
TOLL FREE (800) 280-7320

6235 E. BROADWAY
TUCSON, AZ 85711



EXCLUSIVE AFFILIATE OF
SOTHEBY'S
INTERNATIONAL REALTY

P.O. Box 611
Mt. Lemmon, AZ
85619



Alpine Lodge

Mt. Lemmon, Arizona
in Summerhaven
602-576-1544

Food, Spirits & Lodging



Dick Bloomfield
Broker

p.o. box 611 • mt. lemmon, az • 85619 • (520) 576-1632 • fax (520) 576-1391

ATTORNEY. Wills, Trusts,
Probate, Powers of Attorney, Living
Wills, Incorporations, Limited
Liability Company Formation,
Business Sales, Real Estate. No
charge for first consultation. Call
Michael Foor 882-7761.



The Best Prices
On All Your
Favorite Wild
Bird Products
And Nature
Gifts!

Wild Birds Unlimited

River Road at Craycroft 299-9585

ARIZONA-TERRITORIAL

termite & pest control co.

State Licensed 173 - Insured
#12049 BC

Home Inspection Report
VA & FHA Termite Wood Infestation Report



KEN VAN ZANDT, Owner
2569 E. FT. LOWELL
TUCSON, ARIZONA 85716

PHONE 881-8535

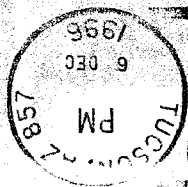
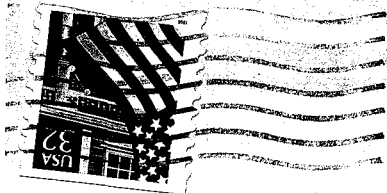


Nell Bloomfield

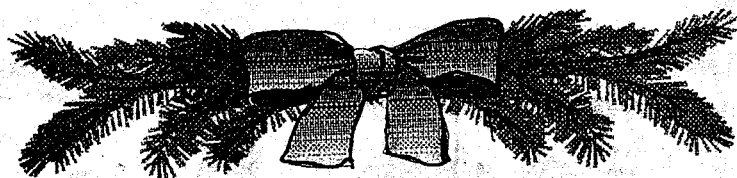
p.o. box 611 • mt. lemmon, az • 85619 • (520) 576-1632 • fax (520) 576-1391

ROCKY POINT CONDO on the
water for rent, luxurious 2 bedroom,
2 bath faces the setting sun over the
ocean each night. Pool, private
patio, air conditioning. Sleeps 6.
(520) 749-9196.

Robert & Sheri Lee
5790 E. Territory Avenue
Tucson, Az 85715



Mt. Lemmon Homeowners Assoc.
P.O. Box 699
Mt. Lemmon, Arizona 85619



Birds and Bees, Flowers and Trees

by Sheri Lee

This fall I have had several calls about a flock of strange new yellowish-goldenish birds with big, fat beaks: namely Evening Grosbeaks. We have all seen our black-headed grosbeaks in the summer and this one is similar in size and shape (short tail, long wings, fat beak), but different in coloring. I'm sure they have been around as Mt. Lemmon is shown in their range in the birdbooks. Probably when they passed through our community before, they didn't happen to spy any feeders full of their favorite sunflower seeds, so they kept on going. They prefer conifers in the summer and lowland maples in the winter, but they will spend the whole winter at any feeder anywhere that is kept constantly filled. If food is scarce in an area, they form huge flocks of hundreds and search in lower valleys for seeds and fruit sometimes migrating as far south as Oaxaca.

A description of the male bird is as follows: 8 1/2 inches long, short black tail, big white patches on black wings, golden yellow head with bright yellow eyebrow, golden yellow breast, neck and throat with bright yellow back. The key here is the white wing patch and the yellow eyebrow. The female is grayish-tan with black and white wings. Both have yellow beaks in the summer turning to white in the fall and winter. Now if all that confuses you, just look it up in your birdbook.

So, were you wondering how it got its name? Audubon's Bird Book says back in the 1820s Major Delafield was out exploring (doesn't say where) and he sighted these birds near his tent at twilight. Since he had never seen them before, or read about them, he thought they hid in the deep shade during the day and came out at sunset; thus he gave them a Latin name that translates to "Evening Night-Singer". The misnomer stuck both in Latin and English. But we know these birds are out and singing all day long on Mt. Lemmon so perhaps next spring you will see them too.

This Echoes is brought to you courtesy of the Mt. Lemmon Homeowner's Association. It is one of the benefits of being a member. Your board members are Fran Crowe, Red Greth, Paul Hawkins, Pete Krauss, Sheri Lee, Dannie Hayhurst, Florence Wilhoite, John Mulay, Fran Zimmerman, Carrie Reitz, Carolyn Autrey, Larry Waldron and Olga Pace. Dannie Hayhurst is publisher and editor of the Echoes.

