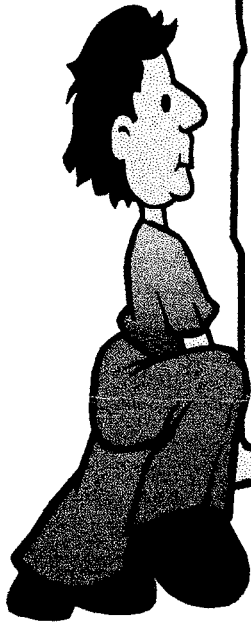


The

Mt. Lemmon Echoes

Serving the Homeowners of Mt. Lemmon

PANCAKE BREAKFAST
THIS SATURDAY October 12, 1996
 serving at the Mt. Lemmon Fire Station
 from 7:30 AM until 10:30 AM
 pancakes, sausage, bacon, coffee, juice
\$5 per person donation -
 everyone welcome but please no pets



Members of the Mt. Lemmon Homeowners Board will be serving up this tasty breakfast. Proceeds from your donation will benefit the Mt. Lemmon Fire Dept.

LETTER FROM
 CHAIRMAN
 NONIE
 JOHNSON,
 COMMISSIONER
 OF GAME & FISH
 DEPARTMENT
 RE: Mt Lemmon Bears

September 3, 1996

I am in receipt of your petition and associated letters regarding this summers bear incidents on Mt Lemmon near Tucson.

First, I would like to emphasize that the Arizona Game and Fish Commission and Department take our mandate to manage Arizona's wildlife extremely seriously. While managing for the sustained welfare of a diverse wild-life resource, we also recognize conflicts occasionally arise from the interaction of wildlife with recreational and other users of public and private lands. There are no clear cut prescriptions which can be applied to satisfy all of the varying viewpoints or

concerns.

It should also be noted that wildlife, including bears, interact with humans throughout Arizona on a daily basis without major conflict. In our efforts to manage wildlife in close association with recreational users, homeowners, livestock interests and others, we are always concerned with public and private property safety. Education and enforcement are just some of the tools available to us in eliminating negative interactions. Certainly the removal of problem bears is another choice available. This latter alternative is certainly not without public controversy

ZIMMERMAN SCHOOL NEWS

by (teacher)
M i c h a e l
Moilanen

We are off to a great start. Our ten students represent all grades except third. I have found all the students exceptional. It has been many years (30 years teaching) since I have had a like situation.

Our program is well rounded, heavy on the basics of reading and math with a wide range of exposure to enrichment activities. The community, parents and my teaching assistants have added much to the education of the students. Janelle Miranda, Kathy Early, Matt Harmon, Suzanne Hensel, Bill Windsor and Chris Sheldon have all donated their time. These people have contributed their talents in the areas of cooking, construction, mushroom identification, fractions, balloon animals, school and Mountain history. In the future we are looking forward to face painting, a First Thanksgiving dinner and a field trip to the Sonoran Desert Museum.

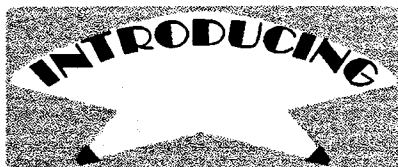
Lisa Watts handles the computer education, each student gets 1 and a half to 2 hours per week computer time. She'll also be doing sign language.

Charlotte Watts, an ASU Fine Arts graduate, handles music class along with French and Spanish. My thirty years in teaching have been divided up with 27 in Michigan, 1 in Australia and 2 in Arizona. I have a wife, Jill, who is the receptionist at the American Lung Association, four children and two grandchildren. My long term goal for Zimmerman School is to make sure the education at Zimmerman is second to none.



Mt. Lemmon Highway

Construction Alert Beginning the week of October 7th, for the next three weeks, the highway will be open Monday through Thursday with short delays, and open with no delays on the weekends. Enjoy the fall colors every day of the week! The area around milepost 12.7 appears to be finished and paved. Part of the reconstruction area between milepost 7.7 and 9.6 is paved. There will be a public meeting Wednesday, October 9th at 6 PM at the Fire Station to discuss the highway schedule.



New Business to Open on Mt Lemmon

Sonni Wendt will partially open the new **Mt. Lemmon Suites & Fine Crafts** (formerly the Antique Shop) at the beginning of November. The gallery/shop will carry one of a kind handwoven fashions and other fine crafts, and will also be used by Sonni as her weaving studio. The Suites are named after the mountains, plants and towns of Switzerland. Thus, the newly appointed "Eiger" will soon be ready for daily rentals. It is an efficiency suite with brand new furniture, a new fully equipped kitchen, fireplace and TV/VCR. In addition, Sonni has established herself as an agent for Whitfield gas log fireplaces and pellet stoves. Initially, the gallery/studio will be open Fri-Sun from 11:00 am -5:00 pm. Visitors are welcome. Call 576-1664.

576-1333
576-1300



MT. LEMMON REALTY

ROBERT T. ZIMMERMAN
Broker

P.O. BOX 1
MT. LEMMON, AZ 85619-0751

576-1333
576-1300



MT. LEMMON REALTY

FRANCES E. ZIMMERMAN
Sales Assoc./Property Management

P.O. BOX 1
MT. LEMMON, AZ 85619-0751



Aspen Trail

Bed & Breakfast
Mountain Hideaway

Hosts: Alex & Char Carrillo
Phone: (602) 576-1558

P.O. Box 572
Mt. Lemmon, AZ 85619



Rosano's Piano Service

ENRIQUE R. ROSANO
Registered Piano Technician

(602) 747-1903
6917 E. Calle Jupiter
Tucson, Arizona 85710



Dick Bloomfield
Broker

p.o. box 611 • mt. lemmon, az • 85619 • (520) 576-1632 • fax (520) 576-1391

REPORT

any bear
sightings to
Arizona Game
& Fish
628-5376 or

1-800-352-0700.



George R. Reitz
Realtor

6235 E. Broadway
Tucson, AZ 85711
FAX (520) 790-7574



Ofc (520) 790-7320
Res (520) 323-8948
Recorder (520) 889-9593



Neil Bloomfield

p.o. box 611 • mt. lemmon, az • 85619 • (520) 576-1632 • fax (520) 576-1391

Fire Department News:

by Chief John Roads
Well we just barely made it through the summer fire season. It was so dry and crisp that just one well placed flame could have ruined it all. The 20 plus inches of rain since July has helped reduce (not eliminate) the problem. I wish to thank all of you for your support and help, especially in joining in with the ban on fires. The Forest Service reports that they had half the number of fires this year. They experienced the average number of lightning caused fires this year (during the monsoon rains). The drop of total fires was the lack of human fires during the fire ban. It makes you wonder about human fires up here.

The call load for the department is almost half of 1995. The only things I can attribute this to is the lack of snow last winter, the highway construction, and the fire ban earlier this year. As of this writing, we have had 147 calls, with 2 1/2 months to go. Last year we had a total 299 calls.

October 7-13 is National Fire Prevention Week. Just a couple reminders for your safety. It has been 11 months since our last cabin fire. I would like to go at least 11 more before the next fire (in the past, we averaged 2 structures a year). As the weather cools off, keep in mind that one of the major fire causes annually is heating units. On Mt. Lemmon we have a combination of gas heat and wood burning stoves, fire boxes and fire places. All units need to be serviced. For gas heaters, oil the fans, clean out the burners and replace the filters (if available). Insure that all gas leaks are repaired. For wood units, clean out the chimneys and boxes, limit the size of the fire in the fire box or fire place (one fire box fire was so hot the cabin walls started to burn last year) and most important, do not dump ashes outside in the forest. This causes serious destructive fires. Place the ashes in water in a closeable metal can. Leave them there for a couple of days and occasionally stir the ashes. Wood ashes can hold heat for several days. Dumping them on the

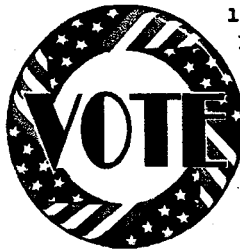
ground can cause a smoldering duff fire that can burn back to your or your neighbors cabin. Also make sure your chimney has an approved flame arrestor on top. The forest fire severity has lessened but is not gone. There were forest fires every month last winter.

The much discussed and well planned prescribe burn for Middle Sabino area is supposedly going to occur this week (Oct 8-11). Conditions are right for humidity, temperature, wind, and fuel moisture levels. Due to problems beyond USFS control, the burn will not go between cabins as originally planned for last spring, but instead several hundred feet south of the cabins. The burn will go from south of the Middle Sabino cabins from the highway to Marshall Gulch and south to Fern Ridge. Several Tucson area fire departments will assist in insuring cabin protection. Anyone wanting to observe the burn is welcome. Contact the fire station at 576-1201 for details.



Two Fire District Board positions

are on the ballot in the November election. Both Phil Archambault and Bob Zimmerman are running for re-election. Remember, how you vote on the national level does affect your future lifestyle on Mt. Lemmon. If you doubt it, just remember the upcoming \$4 user fee.



**The Best Prices
On All Your
Favorite Wild
Bird Products
And Nature
Gifts!**

Wild Birds Unlimited.
River Road at Craycroft 293-9545

Mike Foster
President



ARIZONA
PROFESSIONAL
PLUMBING, INC.

Thank you for using this Corporation!

Licensed
Bonded
Insured

Phone: (520) 721-9600
24 hour service
Residential
Commercial

7949 E. Lakeside Pkwy.
Suite 211
Tucson, AZ 85730

CHECKERED FLAG CARPET CLEANING

Dennis Fetter
Owner/Operator



Office 298-9119
Digital Pager 793-1363
Mobile 419-2325

9257 E. Colette
Tucson, Arizona 85710

*All pages returned within 10 minutes

Quality, Guaranteed, Expert Cleaning • Licensed and Insured

The Living Rainbow, Inc.

P.O. Box 753-S
Mt. Lemmon, AZ 85619
(520) 576-1519
1-800-858-6364 Outside AZ
Debbie Hardesty

Windchimes & Gifts Since 1979

SUMMIT REALTY
altitude is everything

Mary Moran
Agent

p.o. box 611 • mt. lemmon, az • 85619 • (520) 576-1632 • fax (520) 576-1391

P.O. Box 881
Mt. Lemmon, AZ
85619



Alpine Lodge

Mt. Lemmon, Arizona
in Summerhaven
602-576-1544

Food, Spirits & Lodging

Affordable Computer Service

Repairs • Upgrades • Troubleshooting
Internet Support and Training

Kim Price
520-749-5916

kp@primenet.com

Water Co-op NEWS

History of the Mt. Lemmon Cooperative Water Co. Inc. continued from last issue

In 1926 the Summerhaven Development Co. Organized several small systems into one system. This system was used for summer water only. On April 4, 1944 the Mt. Lemmon Cooperative Water Co. was organized and incorporated. Several spring rights were acquired from Mr. Jenks at this time.

Until the mid 1960's all the labor on the Cooperative was voluntary. After this time part time summer help was hired to operate the system. In April of 1981 the first Operations Manager was hired to operate the system. In August 1993 a second employee was hired to assist the Operations Manager.

Corporate Status

The Mt. Lemmon Cooperative Water Co., Inc. was issued a certificate of convenience and necessity by the Arizona Corporation Commission on February 25, 1956 to serve water in the Summerhaven area. The Water Cooperative has a certificate of "good standing" with the ACC at this time. Good standing means that corporate papers are filed with the ACC.

In 1994 the Water Cooperative applied to the ACC for an increase in rates and was granted the approval to charge a monthly service fee of \$31.85.

The Arizona Department of Environmental Quality issues an "Approval to Operate Permit" on an annual basis subject to ADEQ and PCDEQ inspections and compliance with state and federal regulations.

The Arizona Department of Water Resources regulates the quantity of water that a water system is entitled to use through the issuance of permits for wells and spring rights.

COOPERATIVE WATER SUPPLY Existing Sources The legal water rights of the Cooperative are listed in Table 1, WATER RIGHTS ON MT. LEMMON. The combined primary water rights for are 8,821,088 Gpa (27.1 AFA).

Stipulated water rights are 456,250 Gpa (1.4 AFA) for a total of 9,277,338 Gpa (28.4 AFA). All the water that is processed by the Cooperative comes from two spring areas, The Carter Canyon Spring supplies about 25% of the systems water. The flow rate of this spring is typically 4 Gpa.

The main source of water for the Cooperative system is the Upper Sabino Creek and spring area. The system draws water from Pigeon Spring, Upper Sabino Spring, Cold Spring and Sabino Creek into a single intermediate 30,000 gallon holding tank called Sabino Tank. From there the water is pumped to the Miners Ridge 500,000 gal storage tank. The combined flow rate from those sources into Sabino Tank is typically 8 Gpa in the summer to 12 Gpa in the winter. But flow rates as low as 4 Gpa to as high as 25 Gpa are not unusual.

POSSIBLE FUTURE SOURCES

Mr. Robert Zimmerman has approached the Cooperative concerning the possible of Cooperative acquiring the Zimmerman water rights. The Cooperative is interested in possibly acquiring those rights and discussions are ongoing. Mr. Neasham also has indicated that he might be interested in having the Cooperative acquire his water rights.

USFS AND OTHER WATER SOURCES

There are considerable other water rights on Mt. Lemmon (See Table 1, "WATER RIGHTS ON MT. LEMMON.") The U.S. Forest service has rights for approximately 10,700,000 Gpa (32.9 AFA.) The other sources are in excess of 3,650,00 Gpa (11.2 AFA).

ADEQ SOURCE CLASSIFICATION AND IMPLICATIONS

The ADEQ is in the process of reclassifying water sources throughout the state. At the present time the Cooperative's sources are classified as ground water (with surface affects). It is generally anticipated that the Cooperative's sources will be reclassified as surface water. ADEQ is not able to say when that will be done but some knowledgeable sources estimate that it will be within the next four years. The reclassification will have major financial impact on the Cooperative. Surface water must be filtered and ground water does not. When the classification is complete we anticipate having to install filter systems at the Upper Sabino and the Carter Canyon sources. The financial implications of this is discussed in other parts of the plan. Next issue: conflict with the Forest Service and Sierra Club

WATER COOP NEWS

by Ross Quigley - Maintenance Chairman

What was a blessing to us all this summer (RAIN!) has turned out to be a bit of a problem this fall. All the rain we have had, and wouldn't dream of complaining about, has

slowed the work on our Miner's Ridge Tank. We had hoped to have the sand-blasting and coating of the tank completed by the end of September, but it will not be complete till late October. As some of you are aware, we have had a few problems keeping water to all locations, but Michael and Will recently discovered a major leak at a cabin and hope to be able to keep outages to a minimum. Please bear with us.

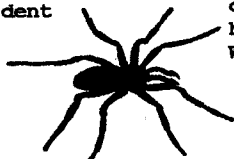
The Water Coop would like to thank the Mt. Lemmon Woman's Club for their generous contribution which has allowed us to recoat our Miner's Ridge Tank! Without their help, we would not have been able to afford this much needed repair. This tank was erected about 1960 and while it has been cleaned out before, it has not been recoated. The tank is 500,000 gallons and comprises one half of our total water storage. Needless to say, it is invaluable to our system, and this recoating will allow us to count on it for many years to come. Some of you may have noticed that the Water Coop finally has an office on the mountain. Feel free to visit our new location at the top of Ajo, but please realize that it will not replace our business office in Tucson. We have needed a suitable location for our storage yard, workshop, and an office for Michael for many years. Michael and Will are still completing the move from our old storage location in the village, so it will be several more weeks before we are totally organized.

In response to a request from some of the members of our community we have compiled a "Wish-List" of sorts for anyone who would like to make donations to the Coop. We are in need of many items, such as : file cabinets, a conference table, a copy machine, an office FAX, a computer monitor (ours is very tired), we could also use some new pipe wrenches and pipe threaders. If any of you "handy types" would like to volunteer to help us with painting our new storage shed or completing the enclosure of our workshop we would welcome the help. The main item the Coop needs to save money for at this time is an OSHA approved diesel and gas tank. We are currently hauling our fuel up the mountain in 5 gallon cans and this will lead to many problems as the winter progresses. The cost of these tanks is not yet known. Fall is typically a very busy time for Michael and Will as they are getting our system ready for winter. We still have some lines

to recover and many meter boxes need to be re-insulated. Any assistance our members would care to lend will be greatly appreciated. Please don't wait for the last minute to winterize your cabins!!! With our main tank down for repairs, we cannot afford any major leaks.

MT Lemmon Woman's Club NEWS

by Helen Quigley, President
The fall colors are just beautiful on the mountain at this



WOMANS CLUB NEWS cont' time and so was the Family Pot Luck that we had at Dannie Hayhurst's home. Several of our members and their spouses and families attended and the food was great. Thank You Dannie for being the hostess to this nice evening.

Thank You Luann for the hikes on Saturday mornings. Well Ladies, just this reminder that our meetings will begin down in Tucson with our November meeting at my home on Wednesday the 6th.



Are you ready Boys and Girls, and the BIG KIDS at heart for the Halloween Bash ?

When: Sat October 26th

Where: Mt. Lemmon Fire Station

Time: Games begin at 6PM - play at your own risk!
Carved pumpkin Contest judged at 7PM ... Dance with your favorite ghouls ... There will be prizes for best costume and a shared pot luck ... so boil up a witches delight to share ... make a donation at the door .. this is a family event ... WE think it will be a real scream!

If any of you folks would like to sponsor a game (that is to help provide some of the prizes, contact Suzanne Hensel at 576- 1272.

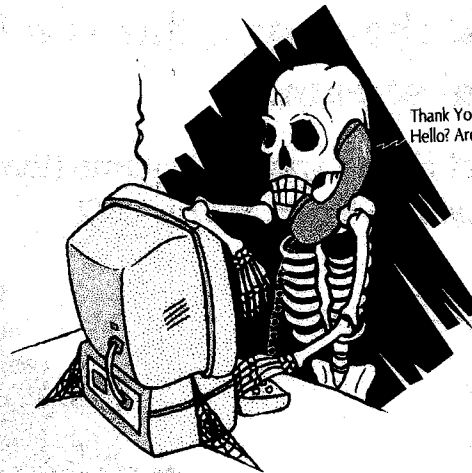
Annual Halloween PARTY



Robert & Sheri Lee
5790 E. Territory Avenue
Tucson, Az 85715

Mt. Lemmon Homeowners Assoc.
P.O. Box 699
Mt. Lemmon, Arizona 85619

This Echoes is brought to you courtesy of the Mt. Lemmon Homeowner's Association. It is one of the benefits of being a member. Your board members are Fran Crowe, Red Greth, Paul Hawkins, Pete Krauss, Sheri Lee, Dannie Hayhurst, Florence Wilhoite, John Mulay, Fran Zimmerman, Carrie Reitz, Carolyn Autrey, Larry Waldron and Olga Pace. Dannie Hayhurst is publisher and editor of the Echoes.



Editor Dannie Hayhurst
working on October issue

(602) 576-1333 OFF.
(602) 576-1512 RES.
(602) 298-6328



MT. LEMMON REALTY

DANIELLE HAYHURST
Sales Associate
NOTARY

P.O. BOX 1
MT. LEMMON, ARIZONA 85619

ARIZONA-TERRITORIAL
—termite & pest control co.—

State Licensed 173 - Insured
#1 2049 BC

Home Inspection Report
VA & FHA Termite Wood Infestation Report

KEN VAN ZANDT, Owner
2569 E. FT. LOWELL
TUCSON, ARIZONA 85716



PHONE 881-8535

