

The

# Mt. Lemmon Echoes

*Serving the Homeowners of Mt. Lemmon*

## \$4 User Fees- Information Update

by Tom Quinn, District Ranger

Dear Mount Lemmon Homeowners and Businesses:

A good deal of incomplete and/or inaccurate information has been circulated regarding the forthcoming user fees in the Santa Catalina Mountains. In order for the public to develop an informed opinion regarding this program, it is essential that they are presented with the facts. Although some of the details of implementation have not yet been worked out, the purpose of this letter is to clarify the history and intent of the user fee pilot program.

### Background:

Congress authorized the Recreation Fee Demonstration Program under the 1996 Omnibus Consolidated Recissions and Appropriations Act of 1996, PL-104-134. The new law:

- \* Directs Federal land-management agencies to demonstrate the feasibility of user-generated cost recovery for operating and maintaining recreation areas, sites, and habitat enhancement projects on Federal lands in U.S. Department of Agriculture's Forest Service and Department of Interior's Bureau of Land Management, Fish and Wildlife Service, and National Park Service.

- \* Authorizes a 3-year pilot program with up to 50 demonstration projects at each agency. The first year of the three expires on September 30, 1996 thereby effectively leaving only 2 Years for implementation. Congress may consider a one-year extension to achieve the full three years.

Allows agencies to charge for admission, use of outdoor recreation sites, facilities, visitor centers, equipment and service.

- \* Specifies that 80% of the new fees stay at the collecting sites and the remaining 20% are to be used at other sites, at the

discretion of the agency. Forest Service projects that are part of this 3-year test will be able to retain 80 percent of any new fees collected (funds are deposited into a Treasury account for each unit). The remaining 20 percent (available to the Chief to distribute, according to the Act) will be made available to Regional Foresters to distribute at their discretion to the demonstration projects within their region.

**Congress authorized the Recreation Fee Demonstration Program under the 1996 Omnibus Consolidated Recissions and Appropriations Act of 1996, PL-104-134. .... Authorizes a 3-year pilot program with up to 50 demonstration projects at each agency. The first year of the three expires on September 30, 1996 thereby effectively leaving only 2 Years for implementation. Congress may consider a one-year extension to achieve the full three years.**

Allows the fees to be used for:

- backlogged repair and maintenance projects;

- interpretation and signage;

- habitat or facility enhancement;

- annual operation, maintenance and law enforcement purposes relating to public use.

- \* New fees are to be based on cost recovery and fair market value of comparable services;

- \* Permits contracting with other public and private entities to provide services to visitors of these areas, sites, and projects.

- \* Encourages private investment and partnerships to enhance visitor services and resource protection; authorizes agencies to publicly recognize partners for these efforts.

- \* Requires the agencies to work closely

with the recreation user public during implementation to determine if the fee program is supported, if it is feasible to administer and if a benefit to the resource is observed.

- \* Requires agencies not to develop regulations for this demonstration program, to cut down on red tape and start up projects quickly, at less cost to the public.

- \* Provides the authority for agencies to assess a \$100 fine for violations of the program.

### Why Recreation User Fees?

- \* Increased demand for recreation opportunities at national recreation areas.

- \* Decreased budgets, resulting in a backlog of unmet maintenance needs and reduced quality of visitors' recreation experiences.

- \* Increasing need for creative ways of having enough resources to keep up with maintenance and quality recreation experiences.

- \* Philosophical and legal basis for recreation fees are outlined in the 1964 Land and Water Conservation Fund Act

- \* Framework for recreation fees is outlined in the 1987 Report of the President's Commission on Americans Outdoors, which says that spending for public recreation needed to rise and direct beneficiaries of recreation

**Philosophical and legal basis for recreation fees are outlined in the 1964 Land and Water Conservation Fund Act.**

- \* Framework for recreation fees is outlined in the 1987 Report of the President's Commission on Americans Outdoors, which says that spending for public recreation needed to rise and direct beneficiaries of recreation opportunities should pay. It is felt by many economists that user fees are the fairest form of taxation

opportunities should pay. It is felt by many economists that user fees are the fairest form of taxation. Currently \$100 million are collected annually for entrance fees, camping, and ski Area permit fees and other services chiefly by the National Park Service and Forest Service. Fees go to the Federal Treasury, not to the local recreation areas.

**The highway is simply a logical point of collection, it is NOT a "toll road", and funds will not be used for highway reconstruction. \*All efforts will be made to mitigate the impacts on residents and businesses on private lands in Summerhaven. Included will be free annual passes for cabin owners, business owners, and employees.**

#### **Santa Catalina Mountain User Fees**

Fees are projected to be \$4.00 per vehicle or \$30 for an annual pass. Saguaro National Park has been charging \$4.00 per vehicle in the Rincon Mountain Unit for a number of years for an area with far fewer recreation sites and services than the Santa Catalinas. The \$4 is consistent with user fees being applied under this pilot project on other national forest lands in Arizona.

\*Congressional and agency intent is that public input should be continually assessed throughout the 2-3 year demonstration trial period. The Coronado National Forest welcomes that input. The ability of Congress to make an informed decision on whether to continue the program after the trial period will be partially dependent on hearing what recreation users have to say about the program during implementation.

\* Federal appropriations to recreation management have not kept pace with the increasing demands and aging, crumbling infrastructure in the Catalinas. The Coronado National Forest has made significant strides towards downsizing our workforce in the last two years, yet funds available for recreation facilities remain grossly deficient.

\* The Santa Catalina Mountains were selected as one of the Forest Service's pilot projects due in part to the close proximity to an urban area, the amount of use, and the existing situation whereby many high quality recreation sites and services were provided at no

charge to the users.

\* The Congressional authorization would permit collection of user fees at many individual sites within the Catalinas, including vista points, picnic areas, trailheads, parking areas, and the Sabino Canyon Recreation Area. We believe the logistics and user inconvenience of collecting fees at these many sites would be a less desirable alternative than collecting at a single site along the Catalina Highway.

\* Most local users (and many tourists) on the Catalina Highway portion of the Santa Catalinas also use additional areas of the range, such as Sabino Canyon, at some point during the year. The fee assessed along the highway should be thought of as a fee for use of all national forest lands in the Catalinas. The highway is simply a logical point of collection, it is NOT a "toll road", and funds will not be used for highway reconstruction.

\*All efforts will be made to mitigate the impacts on residents and businesses on private lands in Summerhaven. Included will be free annual passes for cabin owners, business owners, and employees.

\*The timing for implementation is somewhat unfortunate in that it coincides with a phase of the ongoing highway reconstruction efforts. We are considering a lower annual pass cost for the first year due to the inconveniences and closures associated with the reconstruction.

\* Vehicle traffic on Mt. Lemmon is a concern to the both the Forest Service and Pima County. A potential benefit of the per vehicle charge may be to encourage car-pooling and mass transit operations to reduce traffic and associated pollution, parking, and accident problems.

**Given that the user fee station would not be staffed and operating 24 hours a day, 365 days a year, expected revenue is difficult to project. Plus, in the first year the fee station will not be staffed during highway closure periods**

\* Given that the user fee station would not be staffed and operating 24 hours a day, 365 days a year, expected revenue is difficult to project. Plus, in the first year the fee station will not be staffed during highway closure periods.

Factors affected revenue will be hours of operation, the number of annual passes which are purchased, and the number of free passes for residents, commercial and government vehicles. Our best estimate of revenue is between \$300,000 and \$500,000.

\*We will be submitting an annual report to Congress on where the revenues were expended. In setting priorities we will solicit public input on their priorities. Areas of immediate emphasis will be those projects involving public health and safety including bear-proof food storage boxes, restroom repair and replacement, deteriorating facilities such as campground/picnic areas, reducing erosion, and increased patrols to prevent illegal and destructive activities such as vandalism. Additional projects may include interpretive signing at vista points and improvements in visitor services in the Palisades area. The needs far exceed the projected revenue.

Our hope is that visitors will feel good about paying for a clean, safe, enjoyable recreation experience. Please contact me directly if you would like additional information or if you have suggestions for implementation.

## **Letter from Eden Hackney Concerning \$4 Fee: addressed to Senator Kyl.**

We are astounded that our Republican legislators have voted for a bill which will hurt small businesses as well as poor families. We refer to the "Omnibus Consolidated Rescissions & Appropriations Act" which allows the Forest Service to charge a fee for the drive to Mt. Lemmon near Tucson.

We are equally shocked that no local public input was sought or allowed as the bill sneaked through the House and Senate.

There are many small businesses in the village of Summerhaven which will be adversely affected. These fees will limit the numbers of people who drive to the village to patronize any of the following: Gift shops, Realty offices, Restaurants, Ski area, Cabin rentals, Lodge rentals, and the Post office.

We own a weekend vacation rental cabin near the village. Our rental income is down by one-third this year compared to previous years due to recent publicity about bears, forest fire danger and road construction. This new burdensome fee will further reduce our revenues. *Continued page 3*

**Letter**

Already we are receiving calls from potential renters and guests who are outraged at the fee.

Because the \$4 fee is scheduled to begin in Nov. 1996, we ask for quick action from you to rescind this new tax on the public or exempt Mt. Lemmon from the list.

Sincerely,  
Mrs. Eden Hackney

*Editor's note: The board of the Mt. Lemmon Homeowner's Association has not yet taken a position on this issue. We will try to give you as much information as possible from different perspectives - from that of the property owner, businesses, and forest service.*

## Bears on the Mountain

by Rosemary Hinsch

During the week of June 24, 1996 our cabin, located in the Lower Loma Linda area of tile mountain was visited by a sow (mother bear) and her 2 cubs while the cabin was uninhabited. We have never fed the bears and our birdfeeders are empty, yet the bears literally chewed a hole through plywood siding, 2 by 4s and insulation to make a hole large enough in the kitchen wall for the cubs to fit through and help themselves to M&M's, Bisquick, peanut butter, muffin mix, barbecue sauce, hard candy, cocoa mix and more! My husband, who happens to be—what else, but a veterinarian of all things, went up to the cabin that afternoon and secured the hole with additional 2 by 4's and siding. He came back down the mountain, feeling confident that his repair job would deter the bears from reentering the cabin.

The bears, however, had a different agenda. That same evening, they visited our cabin once again—this time clawing and chewing through the 2 x 4's and making the original hole even larger. Our newly-remodeled kitchen looked as though a bomb had gone off inside.

While outdoors and making repairs the second time around, one of the cubs crept up behind my husband and 3 seconds later, he found himself being charged at by an angry mother bear. He made it into the cabin, just barely escaping the wrath of the mother bear. Needless to say, it was a very frightening and sobering experience.

I was grateful that my 2 curious

sons, ages 7 and 10 along with a friend that had joined us for the weekend, were not "visited" by this mother and her cubs just 2 days prior to this incident! I shudder to think what could have happened if one of the children found themselves "caught" between the mother and its cub, unbeknownst to them. Altho they always carry whistles with them when they play in the forest in the immediate area around the cabin, I doubt the sound of a mere whistle would frighten off a mother bear protecting her cubs. (During the time my husband was "trapped" inside the cabin, while the bears were outside on our deck, he attempted to frighten off the mother by a blast from a large size "air horn" out a small window. Rather than running off, she turned, hissed at him and charged at the cabin!)

No matter how cute the bear cubs may be, DO NOT underestimate the speed, power and fury of a mother protecting its cubs. Frighteningly enough, tourists have been observed getting out of their vehicles (in downtown Summerhaven) with small children in tow to look at the "cute little bear cubs"! This is a potentially very dangerous situation. Those of you with children need to educate your children as to the dangers of getting too close to any bear—particularly a bear that no longer fears humans.

---NEVER get between a bear and its cubs.

---BACK OFF if you do see a bear—don't attempt to by-pass a bear. Retrace your steps and go back the same way you came.

---NEVER feed the bears. If you do, you are encouraging it to become a nuisance and a danger to the human population and will most likely be condemning it to certain death.

---Keep all trash, coolers and pet food inside your cabin.

The Arizona Game and Fish Department tried unsuccessfully to trap the mother and her cubs in an effort to relocate them but curtailed their efforts on July 1st, just prior to the 4th of July weekend—a decision I must admit I found extremely disconcerting, considering the number of people expected on the mountain during one of its busiest holidays! Apparently this bear's behavior (at that time) was not considered "aggressive, enough" to warrant any further action beyond the initial attempts at its capture. Game and Fish officials indicated that they had followed the "correct protocol" and that this would most likely not be a problem, as there would be so much activity and so many people on the mountain over the 4th of July.

We did not see the mother and her cubs on the 4th, although a yearling bear did visit our deck during the early morning hours. The following day, however, my two sons came upon mama while they played in an area close to our cabin at about 4:00 in the afternoon. Needless to say, they were quite frightened—and I was—well, let's just say that my level of tolerance for this situation had reached its low point. Once again, I called Game and Fish.

I am not certain what transpired to change things, however, the next day Game and Fish actively sought out the mother and cubs and this time, successfully captured them, relocating them to a more suitable wilderness environment. We were very grateful and relieved!

According to Game and Fish, Summerhaven and the surrounding area experiences an extremely high density of black bears—perhaps the highest in the state. Although I am not an expert on black bears, it seems logical to assume that relocating several more of the existing bears (particularly mothers and their cubs) would be humane and appropriate—before they either injure someone or become such a problem that they must be needlessly destroyed. (As of this writing, I understand that there are still a few "garbage-seeking" bears invading the general area.) This, in conjunction with a concentrated effort at educating homeowners and visitors on Mt. Lemmon regarding proper trash disposal, food containment and above all—the dangers of feeding the bears, might serve both the human and the bear population well.

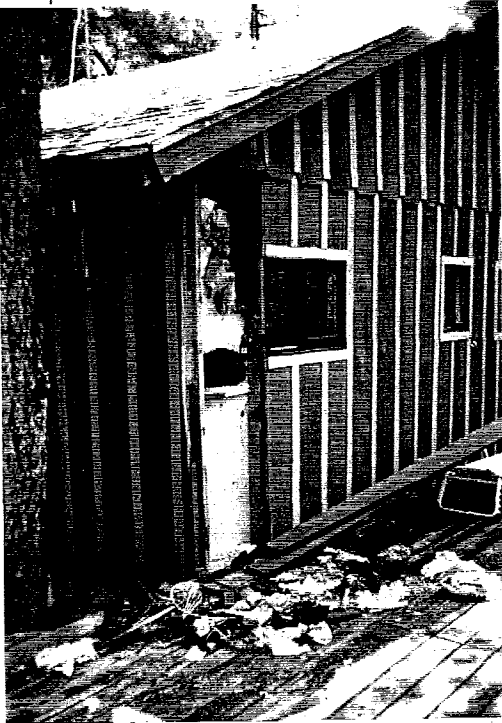
If you are concerned about this situation and/or if you can report any human-bear encounters, please call the Az. Game and Fish Department—particularly if the bear does not seem intimidated by your presence.

Phone: 628-5376

Jerry Perry: Director Az. Game and Fish Department, John Romero: Acting Regional Supervisor, Rick Gerhardt: Field Supervisor or Bob Miles

555 N. Greasewood Rd. (85745)

If you have an emergency concerning bears and the Az. Game and Fish office is closed, call 1-800-352-0700 and ask for Rick Gerhardt to report an emergency bear situation on the mountain. If you can safely document bear activity through the use of photographs or video tape, that would be helpful to the Game and Fish Department in documenting the existence of problem bears on Mt. Lemmon. See back cover for story by Todd Hinsch, age 7



*Photos on this page illustrate the damage done by the sow and 2 cubs - remember, these homeowners did nothing to warrant this invasion of their cabin. photo on left, cabin wall exterior view bear damage. center photo, close up of hole chewed through by sow bear*



*photo, interior of kitchen - food was stored in sealed canisters that bears opened - oven door opened and used as seat by bear*

## Aggressive Mt. Lemmon Bear Destroyed to Protect Public Safety, Property

*this Media Release was dated June 19 1996 and concerned the bear ear tagged 146 Bob Miles AGFD Tucson Region, 628-6376, Ext. 134*

A Mt. Lemmon black bear with an extensive history of aggressive behavior was captured and humanely destroyed Tuesday (June) by the Arizona Game and Fish Department.

The decision to kill the bear was made to protect public safety and to prevent further destruction of private property.

"It was clear that this particular bear had lost its fear of people and had become a threat to human safety," said John Romero, acting Tucson regional supervisor for the department. "This is a perfect example of how food provided by people changes the behavior of a bear. Once we have a bear acting like this, we have no choice but to remove that threat."

The two-year-old female bear had become a constant threat to campers and residents of Mt. Lemmon and was well known to wildlife officials. The

animal was captured in July last year following a series of incidents and an identification tag was attached to an ear in order to better monitor its movements. During the remainder of last year's summer and this spring and summer, the animal's behavior became increasingly aggressive and threatening towards people it encountered.

As an example, this bear was involved in entering a Mt. Lemmon cabin last August that was occupied by University of Arizona football coaches. In that incident, head coach Dick Tomey entered the cabin to find the bear eating from an ice chest about ten feet from a sleeping assistant coach.

More recently, the bear entered an occupied motor home parked at the Rose Canyon Lake campground. One occupant of the motor home awoke to find the bear looking at him and used a gun to fire warning shots to scare the bear away. During the three days prior to its final capture, the bear entered a food storage building at the Boy Scout camp, broke into an unoccupied cabin, ripped through a tent at the scout camp, entered an occupied dining tent at the Boy's Ranch campsite, and broke windows of two cars to obtain stored food. Numerous other incidents involving entry and damage to buildings and tents, and abnormal approaches to people have been reported.

"This was the only bear on Mt. Lemmon that we can document that has consistently been entering buildings and camp tents, bluff charging and acting aggressively toward people" said Rick Gerhart, a department field

supervisor for the Mt. Lemmon area. "Other than this bear, it has been a fairly quiet summer on the mountain and that's a direct result of Mt. Lemmon residents working hard to stop the intentional feeding of bears." Gerhart said that this particular bear had been given several opportunities to change its behavior but nothing seemed to work. "Our officers gave this animal every opportunity to stop its aggressive and destructive behavior," he said. "We even tried relocating this bear to a more remote, less inhabited area only to have her travel back to the same campgrounds and housing areas. We also tried to place the bear in a zoo once we had it capture, but bears are common and no zoo wants to deal with a bear that exhibits aggressive tendencies."

As a precaution, campers and homeowners in bear country should be aware of unwanted visits from potentially dangerous black bears. "Black bear activity is high in almost all of the mountain ranges in southeastern Arizona, in the northern rim country from Williams and Flagstaff to Payson and south to Roosevelt Lake and Globe, and in the White Mountains due to extremely dry conditions that

*continued page 5*

**Aggressive bear cont.**

has reduced the availability of natural food sources" said Bob Miles, information specialist for the Tucson office of the Game and Fish Department.

"Bears are normally very shy and reclusive animals that want nothing to do with people," Miles said. "But when weather conditions dry the forest out, natural food sources become scarce and bears are attracted to the food smells found in campgrounds."

The presence of campground bears will more than likely continue until the summer rainy season begins and natural food sources return to normal. Until conditions do improve, campers should be alert to visits from bears and exercise caution and good sense if a bear does show up in camp. "If a bear should approach a person it's best to slowly back away," Miles said. "Talk assertively to the animal or make loud noises like banging pots and pans together in order to drive the bear away. Try not to surprise the animal."

The Game and Fish Department offers the following list of precautions:

- \*Do not feed any bear.
- \*Keep all food in campground provided bear-proof containers and away from sleeping areas. If containers are not available, use a rope to suspend food items from trees or place food in airtight ice chests and place chests in car trunks. If ice chests must be placed inside a vehicle's passenger compartment, cover the chest with a blanket or tarp. Some bears are able to recognize ice chests as food containers and will break vehicle windows in order to reach them.
- \*Clean up camp following meals. Wash following meals so that food odors do not linger on the body.
- \*Never take food to bed.
- \*Don't sleep in an area used to prepare food or for eating.
- \*Put all trash into bear-proof containers.
- \*Campers should never intentionally feed any wildlife. This practice makes wildlife dependent on man and almost always results in conflict.

*Photo right - Bear sightings have been common in all canyons - this yearling was photographed near a cabin on Turkey Run Rd -*

compliments to  
Dorothy Crawford for photo

**JULY 4TH PARADE**

by Fran Zimmerman

Once again, the 4th of July parade was a success and lasted 45 minutes. I would like to thank all those folks that help in making it a fun event. Thanks to Bill Brown, Pat Hayhurst, Chief John Roads, Pima County Sheriff's Department, Steve Lightman, and of course, my husband Bob. Don Underhill, owner of the Alpine Lodge was gracious to allow the announcers, judges and Beaver's Bandbox musicians to take over his patio and porch. We had twenty seven entries beginning as follows: St. Cyril's Cub Scouts, Mt. Lemmon Patriots - Andrees and Capusotos, Homeless Bears - Josh and Lauren Lederman, Suki Etter, Sunrise Chapel, Kleinman family, John Even, Tom and Jackie Quigley, Mt. Lemmon Woman's Club, Cody and Travis Iverson, Red, White, Blue Crew, Lightman and Beckman children, Living Rainbow, Mt. Lemmon Bear and Friends, Jeff & Brad Chestnut, Friedman family, Hensel family, Villaescusa family, Happy Daze, Alan Abel, USDA Forest Service Fire Fighters, Thomas Cleaners, Johnny Gibson, Gremmier family, Carey Kent, Mt. Lemmon Ski Valley, Supervisor Paul Marsh, Mt. Lemmon Fire Department.

The winners were:

Mt. Lemmon Woman's Club- Original, Sunrise Chapel - Patriotic, Living Rainbow - Humorous.

Please note that majority of our parade participants are Mt. Lemmon homeowners or residents.

See you next July 4th!

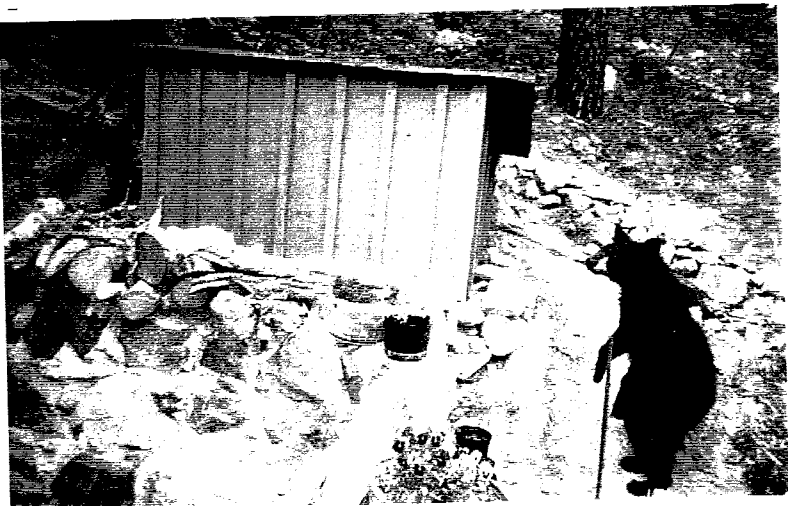
*Special thanks to Fran Zimmerman who again organized and directed the parade!*

**The Fourth of July in Summerhaven-1920's style**  
by Suzanne Hensel

This past 4th of July was fun. The Mt. Lemmon's Women's Club once again hosted the Summerhaven parade, as they have for over 20 years. With a little stretching, it lasted close to an hour. Crowds of people lined the streets to watch this brief, annual event. When it was over the residents of Summerhaven shrugged their shoulders and went back to their homes and businesses. Another 4th of July was over. But for Summerhaven, the celebration of the 4th hasn't always been so brief.

The 1920's was a wonderful time for the young village. The road up the north side had just been completed, and the Summerhaven Land and Improvement Company was going strong. People were buying lots and building cabins. Summerhaven was the happening place to while away the dog days of summer.

On the 4th of July car loads of people would make the long, hot, dusty trips. For many it was the only time they were on the mountain. The local paper describes one of the first big Fourth of July holidays in Summerhaven, "A safe and sane celebration of the glorious fourth was hugely enjoyed by more than a hundred people from all over the state at Summerhaven. A flag and bunting decorated picnic ground was the scene of the festivity at the old Weber flat. A barbecue 'done to a turn' was prepared by Mr. Jim Westfall, and large tables decorated with mountain wild flowers were spread under the pine trees by the ladies. A rare treat in the form of a freezer of ice cream was heartily welcomed. Further amusement was furnished by songs and stories and the expenses of the affair were defrayed by contributions from the participants."





*Photo of 4th of July celebration in Summerhaven circa 1920. Many made the long journey up the Catalinas to celebrate. This took place at the site of the old Weber cabin. It was a large flat area. It is believed to be somewhere around Carter Cyn, however the exact site is unknown. (Photo courtesy of Lyle Genung)*

#### 4th July - 1920's cont

"That night everyone was cordially invited to attend a campfire at the Hotel Mariposa. In the welcome warmth of the campfire, songs and stories and corn-popping were participated in by the many guests. That the day was entirely enjoyable and welly worth the trip was evidenced by the number of people who have already planned to spend more weekends at Summerhaven.

(Arizona Daily Star, July 9, 1920).

For decades to come Summerhaven was the place to be for the 4th of July. However, today's modern conveniences such as air-conditioning keep many people from making the long trip, even though the "long" trip is much, much shorter.. Ironically, the very invention of the automobile which allowed people to come to the Catalinas in a mere five or six short hours now makes it easy for visitors to come up the mountain for the day and head down for the fire works at night. Consequently, Summerhaven no longer hosts large evening barbecues on the 4th of July, that last well into the night. But we have something that is very special, a parade. It may not be large or flashy, but it is full of a lot of terrific people that are willing to dress up in all sorts of costumes just for the fun of it. And it was fun!

## BIRDS AND BEES, FLOWERS AND TREES AND CARPENTER ANTS

by Sheri Lee

Besides giving us all something to talk about and put Mt. Lemmon on the nightly news, the bears have cleaned up lot of carpenter ant nests.

Surely at some time you too have noticed big, shiny, black ants wandering around your cabin. These guys are not nice and you don't want them around. They will do a lot of damage to your cabin, mostly in wood that has been softened at some time by water. While they can borrow into strong, healthy wood, they usually don't. Repairing the damage can be extensive and expensive and you just know if you sell your cabin the termite inspector will be inspecting for carpenter ants too. My in-laws had to tear off one corner of their house in the midwest and replace two window frames and twenty 2 x 4s when they finally noticed they had carpenter ants.

The ants are not eating your cabin for food, but rather hollowing out spaces for nesting. The ants like their nest to be very clean so they carry all the sawdust away, usually outdoors and hide it in something hollow like a stump or log.

The ants eat other insects, living or dead, and they love to eat people food. Usually the reason they move into your cabin is to be near a food source, so don't leave your chocolate chip cookie crumbs lying around on the counter and floor to attract them in the first place.

When a colony reaches 2000-3000 ants, the "reproductive" ants develop wings and swarm to a new location.

Don't wait to see a swarm. Follow the ant trail now to find out where they are living. If its outdoors in a stump, point it out to your pet bear and it will tear the stump apart to eat the ants, but, if the ants are going into a hidey-hole in your cabin, you'll need to open up the hole, kill the ants and replace the water softened wood.

Yes, it would take courage to face 3000 ants, but don't delay, the problem will only get bigger.

**Road Meeting July 24th,  
6PM at the Fire Station**

## Water News Update by Larry Waldron

**As** of July 9th our water situation is improving. Although the springs are producing little water, we are optimistic a couple more inches of rain will increase our spring flows. We have received approximately 3 inches of rain since June 30th. Normally that amount would have begun to increase production, but because of the prolonged drought it will take additional moisture to seep into the aquifer.

According to Will Jaster the storage tanks currently contain approximately 500,000 gallons. This is half of our system capacity. Will also indicated that approximately 150,000 gallons of water was used over the 4th of July weekend. Michael and Will have done a tremendous job of juggling water between storage tanks. On behalf of the water board, we sincerely want to thank them for their efforts. They have also repaired some rather large leaks in the system distribution lines. These leaks have been difficult to find and appear to have been long-term. The total volume of these leaks are almost equal to our spring production at this time.

I would like to again thank all of you who have diligently conserved water. Conservation is a major reason we have water remaining in our storage tanks. Not having a forest or cabin fire has also been a huge factor. There is some evidence that the fire danger, road construction, and bear activity have reduced visits to the mountain and thereby lessened water usage.

The board is still busy working on a loan application and water grant among other issues. Customers will be receiving a sample letter pertaining to our grant with their July water bill. Please take the time to write a letter of support for the water grant. If you know of anyone who is interested in Mt. Lemmon issues ask them to write a letter of support. Your efforts could very well make the difference in the co-op receiving grant money. Michael Stanley

is working on obtaining cost estimates for the repair and recoating of the Miner's ridge tank. We hope to complete the Miner's ridge repairs during September.

Let it Rain!!!

( Sheri Lee measured unofficially 6 inches of rain for both Saturday and Sunday night! )

## Fire Department INFO by Chief John Roads

**Run Update** - 1996 has been very slow compared to last year. We are experiencing less than 1/2 of the action of last year. That is good. However, on the long weekend of the 4th of July, the department ran on almost 15 calls. That's a lot for one weekend, however, most were medical related with no serious injuries.

**Fire Situation** - Rain is beautiful. On 7-9-96, the Forest Service lifted the fire ban in the forest. However we are a long way from being out of danger. The two big hazards are the ground fuels and the living standing trees. The ground fuels have picked up moisture from the rains, however the standing living trees are still very dry, and will be until we receive lots more rain or heavy snow pack. Even though the fire bans have been lifted, please be extremely careful with fire. The sign at the bottom of the mountain still shows extreme conditions. Last year the big fire breakout occurred in August, after an unexpected drop in the monsoon flows. If you have to use the fireplaces, please make sure that you have an approved spark arrestor on the chimney, that you keep the fires within control, and that you properly dispose of the ashes in a safe manner to prevent any fires. We had several fires last year that resulted from improper disposal of fire place and charcoal ashes.

**San Carlos Crews** - the two San Carlos Crews are gone. One crew stayed 10 days, the other for 5. The crews cut fire lines between the private homes and forest areas, mostly on the south and west side of the village. The crews also started raking needles away from the red tagged cabins. Unfortunately, the crews did not have enough time to do the entire area. If your cabin is not raked and trimmed, please do so before the fire occurs.

Some of you may have noticed to big tank trailers sitting along the road on village streets. These trailers were loaned to the village through the State Land Department to store extra fire

water. The trailers should be here throughout the summer. The stored water is considered non-potable, for firefighting only. The trailers are placed in areas away from the hydrants to give the firefighters a closer water supply during a fire emergency.

**New Vehicle** - Many thanks to the Water Coop Board, Michael Stanley and Will Jaster. The Water Coop sold the 1991 Utility truck to the Fire Department at the end of the Coop's lease. The all wheel drive 1 ton unit will be converted to a Type 6 brush, attack and rescue vehicle. The unit will provide firefighters another firefighting quick response vehicle for community and forest protection.

**Strike Team** - As many of you are aware, Mt. Lemmon received the services of a Colorado Based engine strike team in early June. The strike team (5 engines) was assembled from departments in Colorado that were not experiencing fire severity problems. The strike team moved to Arizona at State expense to assist in fire hazard reduction as well as being available in case Southern Arizona experienced fires. The arrangement for the team to come to Arizona was part of the National Government, the State Government and the Local Fire Departments Cooperative Agreement that allows for a sharing of resources to handle critical needs. Fire Departments rent out equipment to the states and federal government to handle these needs. It is a definite financial benefit for fire departments to partake in the cooperative programs. Mt. Lemmon has been a cooperative agency for many years. This is how we managed to be a recipient of the Colorado teams services (which we didn't have to pay for). It is also the reason that Mt. Lemmon sent a unit to Mt. Graham for the fire in May. By the way, the funds generated from the Mt. Graham fire more than covered the cost to purchase the Water Coop. truck. Many fire departments are purchasing new apparatus as the result of the State and Federal responses. Anyway, to get to the point, the State Land Department wants to put together a Pima County Strike Team of Type 3, four-wheel drive engines to be available to respond to other areas



*Photo of New Generator for fire station - Chief Roads & Larry Bednarek standing by the generator donated to the Mt. Lemmon Fire Station by Erik Simonsen. The large 200 amp unit will be a fixed unit to supply the station with power during outages. The Fire District is extremely grateful to Erik for the generous donation. The unit arrived June 28th and is currently being connected to the station. Special thanks goes to Simonsen Generator Service of 3851 S. Country Club, Tucson and the Erik Simonsen family for this generous donation!*

(state or federal) as needed, as the severity seasons move around the country. Due to the favorable diversity of the Mt. Lemmon yellow engine, Mt. Lemmon Fire District has been invited to participate on this strike team. There is no guarantee that the team will ever respond, but if any community finds itself in trouble, the team will be called out. It will be Mt. Lemmon's way of repaying other communities for the services received from the Colorado team, as well as for a way to make additional revenues for the district. The team is only in the planning stages at this time. I will update you in future Echoes as plans develop.

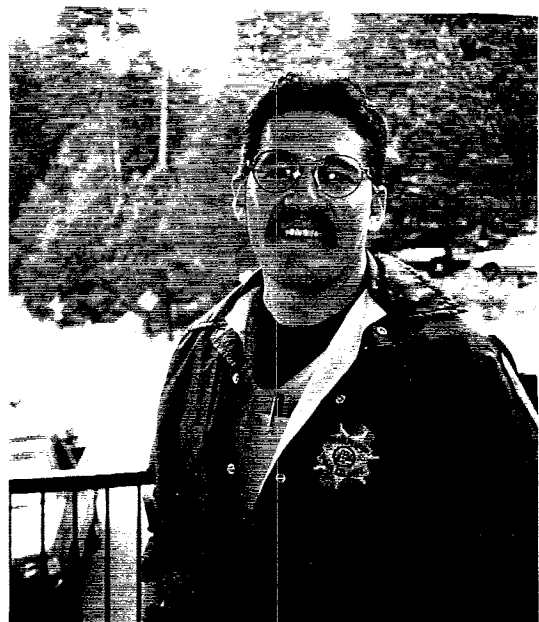
This Echoes is brought to you courtesy of the Mt. Lemmon Homeowner's Association. It is one of the benefits of being a member. Your board members are Fran Crowe, Red Greth, Paul Hawkins, Pete Krassus, Sheri Lee, Dannie Hayhurst, Florence Wilhoite, John Meloy, Fran Zimmerman, President, Carrie Reitz, Carolyn Autrey, Larry Waldron, and Olga Pace. Dannie Hayhurst is publisher and editor of the Echoes.

The 4th of July celebration in 1918. The man facing left is E. W. Childs, president of the Summerhaven Land and Improvement Company. Behind him, and also looking to the left is Leeta Westfall. The other folks were also summer residents of the mountain. (Courtesy of Lyle Genung)



Next issue we hope to highlight Mt. Lemmon's two resident deputies from the Pima County Sheriff's Department -

Left - Eric Johnson, right- Marty Miranda



Affordable Computer Service  
Home Computer Specialist  
Repair - Upgrades  
Troubleshooting - Internet Support  
(520) 749-5916

Mike Foster  
President



ARIZONA  
PROFESSIONAL  
PLUMBING, INC.

"Thank you for using this Corporation"

Licensed  
Bonded  
Insured

Phone: (520) 721-9699  
24 hour service  
Residential  
Commercial

7949 E. Lakeside Pkwy.  
Suite 211  
Tucson, AZ 85730

ARIZONA-TERRITORIAL  
—termite & pest control co.—

State Licensed 173 - Insured  
#1 2049 BC

Home Inspection Report  
VA & FHA Termite Wood Infestation Report



KEN VAN ZANDT, Owner  
2569 E. FT. LOWELL  
TUCSON, ARIZONA 85716

PHONE 881-8535



**Aspen Trail**

Bed & Breakfast  
Mountain Hideaway

Hosts: Alex & Char Carrillo  
Phone: (602) 576-1558

P.O. Box 572  
Mt. Lemmon, AZ 85619

**CHECKERED FLAG CARPET CLEANING**

Dennis Fetter  
Owner/Operator



Office 298-9119  
\*Digital Pager 793-1363  
Mobile 419-2325

9257 E. Colette  
Tucson, Arizona 85710

\*All pages returned within 10 minutes

Quality, Guaranteed, Expert Cleaning • Licensed and Insured

*The Living Rainbow, Inc.*

P.O. Box 753-S  
Mt. Lemmon, AZ 85619  
(520) 576-1519  
1-800-858-6364 Outside AZ  
Debbie Hardesty

Windfumes & Gifts Since 1979

ROYAL  
**LONG**  
realty co.

George R. Reitz  
Realtor

6235 E. Broadway  
Tucson, AZ 85711  
FAX (520) 790-7574



Ofc (520) 790-7320  
Res (520) 323-8948  
Recorder (520) 889-9593

(520) 576-1333  
(520) 576-1300



MT. LEMMON REALTY

ROBERT T. ZIMMERMAN  
Broker

P.O. BOX 1  
MT. LEMMON, AZ 85619-0751

(602) 576-1333  
(602) 576-1300



MT. LEMMON REALTY

FRANCES E. ZIMMERMAN  
Sales Associate/Property Management

P.O. BOX 1  
MT. LEMMON, AZ 85619

(602) 576-1333 OFF.  
(602) 576-1512 RES.  
(602) 298-6328



MT. LEMMON REALTY

DANIELLE HAYHURST  
Sales Associate  
NOTARY

P.O. BOX 1  
MT. LEMMON, ARIZONA 85619



*Rosano's Piano Service*

ENRIQUE R. ROSANO  
Registered Piano Technician

(602) 747-1903  
6917 E. Calle Jupiter  
Tucson, Arizona 85710

**SUMMIT REALTY**  
altitude is everything

Mary Moran  
Agent

box 611 • mt. lemmon, az • 85619 • (520) 576-1632 • fax (520) 576-1391

**SUMMIT REALTY**  
altitude is everything

Neil Bloomfield

p.o. box 611 • mt. lemmon, az • 85619 • (520) 576-1632 • fax (520) 576-1391

**SUMMIT REALTY**  
altitude is everything

Dick Bloomfield  
Broker

p.o. box 611 • mt. lemmon, az • 85619 • (520) 576-1632 • fax (520) 576-1391



The Best Prices  
On All Your  
Favorite Wild  
Bird Products  
And Nature  
Gifts!

Wild Birds Unlimited  
River Road at Craycroft 293-9585

**MT. LEMMON**

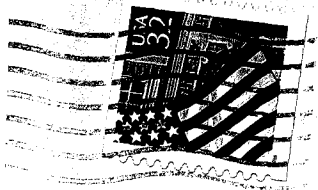
MT. LEMMON  
FIRE DISTRICT

JOHN ROADS  
Fire Chief

P.O. Box 759  
13170 N. Oracle Control Rd.  
Mt. Lemmon, AZ 85619

Emergency 911  
Office 576-1201  
Highway Conditions 741-4991  
Forest Service Information 749-8700

Robert & Sheri Lee  
5790 E. Territory Avenue  
Tucson, Az 85715



Mt. Lemmon Homeowner's Association  
P.O. Box 699  
Mt. Lemmon, AZ 85619-699

## The Opposite Of Goldilocks

By Todd Hirsch, age 7

On June 26 1996 a mother bear broke into our cabin and ate all of our candy. The baby bears ate all of the frosting. It spilled the bisquit. It cut through the roll of trash bags. It tried to attack my Dad when it came back again while he was fixing up the hole in the wall. The Game and Fish Department said they would catch it after the 4<sup>th</sup> of July and I am glad they did.

