

# THE MOUNTAIN ECHO

VOLUME 1 NUMBER 7

MT. LEMMON, ARIZONA

MAY 5, 1979

## Diets, Dates And Dinners Raise Money for Volunteer Fire Dept.

Money, money, money is still the goal for the Mt. Lemmon Volunteer Fire Department. And thanks to the help of the cabin owners, residents, and visitors to the mountain that goal is getting closer and closer. Fund-raising projects are popping up all over the mountain.

Madonna (Mama) Miller and Mary Ann Chilson came up with one of the most unusual ways to make money. Mrs. Chilson and Mrs. Miller both decided they wanted to loose some weight. So

these two began getting pledges from people on the mountain for 10¢ per pound. To date Mary Ann is ahead with a weight loss of 18 lbs., while Mrs. Miller is running close behind with 15 lbs. Both are bringing in more than \$2.00 per pound in pledges. Close tabs are kept to assure there is no falsifying of records. Weigh-in time is Monday mornings. The weights are posted and then pledges are paid for the week's loss. As Mrs. Chilson puts it, "I couldn't

dare not show a weight loss when it is posted each week for everyone to see."

Another unusual fund-raising project is the "Date With Mayor Billy Contest." Entry fee is \$1.00 and these proceeds also go to the Fire Department. The deadline was previously May 15, but it has been extended to May 30 in order to catch more weekenders. Mayor Billy promises an exciting day of Goofy Golf and many more enlightening experiences. The contest is

open to all ages, and all dates will be well chaperoned. Entrants should submit \$1.00 and their reasons for wanting a date with Mayor Billy in 10 words or less. (You may also enter for your friends.) Entries may be mailed in care of the paper to P.O. Box 48, Mt. Lemmon, AZ 85619, or left at the Alpine Lodge on Mt. Lemmon.

The dinners are still bringing in money every two weeks. If the weather continues to be nice, an outdoor salad dinner is planned for June 2. We'll have more on this dinner in our next issue. Both of the last two dinners brought in more than \$300.00 profit each.

In addition to their regular jobs and firefighting, the volunteers have taken to moonlighting for the Fire Department by taking cleaning jobs. Recently they did cleaning and painting on several cabins to get them ready for the summer. If you have cleaning, painting or yard work to do around your cabin this summer, call Jack Chilson at 791-9870 or Muff Flaughner at the Vine Restaurant, 791-9771, to make the arrangements. Remember that the money they raise will help us all.

Pens are still a good seller for the Volunteer Fire Department and they make a popular souvenir for our many visitors. The pens write in black and have an eraser. On the side of each is printed in gold, "Honorary Member Mt. Lemmon Volunteer Fire Department." These can be picked up at the Vine Restaurant, Mt. Lemmon Iron Door Restaurant at the Ski Lodge, the Alpine Lodge, or the Mt. Lemmon Realty Office. The pens are 25¢ each or five for \$1.00. Also, residents and

cabin owners are being offered the Mt. Lemmon Volunteer Fire Department tee shirts at \$7.95 each. These shirts are in bright yellow and have black lettering. Hopefully they will soon be available to the public with the addition of "Honorary Member" added to the shirts.

Now that cabin owners are moving to Mt. Lemmon for the summer, the firefighters have two specials just for them. These volunteers are selling and installing smoke

detectors. These are top quality smoke detectors, one of the best on the market. In addition, the volunteers are selling fire extinguishers. Both of these items are \$20.00 each and can be picked up at the Alpine Lodge.

Hopefully there will soon be a booth set up in front of the fire station on weekends to sell all of these items.

In addition to earning money, the Department has been spending it. Mrs. Miller as Fire Department

(continued to page 4)



Mary Ann Chilson and Madonna Miller check the scales closely at a Monday "weigh in".



Gary Mitchell and Sarah Flaughner model two of the new fire fighting outfits.

# Letters

Santa Catalina Ranger District  
2500 N. Pantano Road, Suite 126  
Tucson, Arizona

Dear Friends:

We would like to take this opportunity to inform you of the publication of the Draft Pusch Ridge Wilderness Management Plan. Copies are available for you review at the Tucson Public Libraries, the District Offices of the Coronado National Forest and the Forest Supervisor's Office. Written request for copies of the document will be received by the Santa Catalina Ranger District Office, 2500 North Pantano Road, Tucson, Arizona 85715.

We would like to invite you to review this draft management plan. There will be three open houses during the month of May during which you are encouraged to bring your questions and comments. These open houses will be held at the Santa Catalina District Office, 2500 North Pantano Road, in the Woodland Shopping Center.

Tuesday evening (7:00 — 10:00 pm) May 22, 1979  
Thursday evening (7:00 — 10:00 pm) May 24, 1979  
Saturday (10:00 — 4:00 pm) May 26, 1979

The Forest Service employees will be present during these periods to respond to your concerns about the management of Pusch Ridge Wilderness. We would welcome your oral comments during the open house periods. Written comments concerning this review are due June 8, 1979 and should be sent to the Santa Catalina District Office.

The comments obtained during this review process will be used to revise the draft document, as necessary, prior to adaptation of the final Management Plan.

We are looking forward to your continued involvement in the management of the Coronado National Forest.

If you need more information to respond, please contact the Santa Catalina Ranger District at 2500 North Pantano Road, Tucson, Arizona 85715 or call (602) 296-6245.

Sincerely,  
Dean McAlister  
Acting District Ranger

Dear Newspaper,

I'd like to express my thanks to the folks that showed up to donate their time and energy toward cleaning my cabin; Bob Murphy, Tom Attaway, Beverly Anderson, Joey Noonkester, and Gary Mitchell. Also thanks to Flip Atkinson and Johnny McClaren.

These people were not paid individually for the labors they performed; a monetary compensation for the task was given to the Mt. Lemmon Fire Department. As Jack Chilson (Volunteer Fire Chief) has often stated, "Everyone is a member of the Fire Department"; and these folks have proven that, not by putting out a fire, but through hard work to raise money for this worthy organization.

Thanks again,

Billy Clark

P. S. Thanks also to Madonna Miller who furnished some equipment for the job and attempted in vain to get more people to show up for this charitable labor.

HICKEY • KC • MONROE • CP  
ROUGH COUNTRY • STROPPE  
ADVANCE ADAPTER • HOUSE OF STEEL

**Lee's 4 - Wheel Drive**

3 W. FT. LOWELL  
TUCSON, ARIZ. 85705

(602) 624-0651

**AD  
SPACE**

**AVAILABLE**

Phone 791-9733



**FRAN ZIMMERMAN**  
Sales Associate

*Mt. Lemmon Realty*

Post Office Box 77  
Mt. Lemmon, Az. 85619

791-9772 / 791-9881



# Spotlight



Pauline Kitt Hull

by Frances Morse

Did you know that Mt. Lemmon's early claim to fame was the highest tennis court in North America. Situated in the flat parking area in front of the old Grauman cabin at Soldier's Camp, this was where our current "Spotlight" learned to play tennis.

It was 1910 when Pauline Kitt Hull first came up Mt. Lemmon. At that time she was still a baby. Her parents came up the old Box Canyon Trail through Sabino Canyon before the later Plateau Trail was built. Once you made that eight to ten hour ride up the mountain, you stayed all summer. The only ones who did any commuting were the husbands and they only came up for long weekends.

Mrs. Hull pulls out a photo album to show me numerous pictures of the early settlement at Soldier's Camp. There is a magazine clipping with a picture of the tennis court. The women were playing in long dresses and the backdrop was composed of gunny sacks.

An early picture of Mrs. Hull and her cousin (probably from that first trip up in 1910) show how they traveled up the early trail. They were in saddlebag-like holders such as a pack mule might carry. One child was on each side of the horse riding up the trail in these leather holders. Apparently it was the safest way to carry a toddler up the mountain.

The first summer on the mountain the Kitt family came up with a cousin, Edith Stratton Kitt. Mrs. Stratton Kitt had been raised as a child on her father's mine and ranch on the Oracle side of Mt. Lemmon. It had been this Mrs. Kitt's father who led the Lemmons to the top of the mountain in 1881. Edith Kitt had spent her summers on the top of the mountain as a child and wanted to come again. Mrs. Hull doesn't remember much about that first trip because she was so young, but that was the last time she remembers her aunt coming up to stay. They spent that first summer at Bear Wallow.

Apparently her mother found the mountain quite enjoyable because the next summer they were back to camp by the old



ranger station at Soldier's Camp. The third year they were where the current Hull cabin is located. It was 1920 before they built this permanent cabin.

During those first years they lived in a double tent house. It had permanent floors but the sides and top were canvas. Looking back, Mrs. Hull wonders how they ever got all their supplies up the trail. They seemed to take everything up with them for a summer's stay including the tents, silver, china, crystal, clothes and food.

Leta Westfall who was at the ranger station back then, became one of her mother's best friends. It was because of her that they moved to the Soldier's Camp area.

"Friends of my folks started going up there because we talked of it so much. Soon there was quite a community at Soldier's Camp. Every night we had a big campfire. All the children sang and put on skits. We thought we were entertaining. During the day the women held bridge parties and tea parties. And we had dinners out under the trees like one big happy family. We

were all very close."

Mrs. Hull stopped to turn the page and show me some more pictures. These were of her mother and the other women at Soldier's Camp, including Leta Westfall. There were even some of these big dinners, complete with white linens and silver candlestick holders.

In 1933 or 34 when Gilbert Sykes was the assistant ranger they moved the ranger station to the current location. It was about then that we had to stop our big outdoor campfires at night. The Forest Service felt it was too dangerous.

During the day the kids played like all kids will. They explored, rode horseback over to

Weber's Camp (later Summerhaven) and played tennis. There was a creek at Soldier's Camp with a hand-made swinging bridge across it. From here the families hauled water in buckets to be heated for bathing and washing. Drinking water too had to be hauled from the creek. "That is the reason we all built near the creek. In 1927 or 28, Dave Cochran spear-headed a drive to build the dam at Soldier's Camp and make the lake. It was strictly for recreation and beautification. We swam in it a lot, as my children did in later years."

While Mrs. Hull turned a few pages in her picture (continued to page 4)

VISIT COOL MT. LEMMON - WINTER SKIING  
MOTEL CURIOR FOOD  
RESERVATIONS

**MT. LEMMON'S ALPINE LODGE**

P.O. BOX 48, MT. LEMMON, ARIZONA 85619

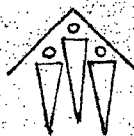
**General Store & Vine Restaurant**

Ph. 791-9882 791-9771

COCKTAILS

PACKAGE GOODS

MR. & MRS. JOHN W. G. MILLER, OWNER-OPERATORS



**CBHS**

**HELPING PEOPLE WITH  
ADDICTIVE PROBLEMS**

**Private Confidential**

**DETOXIFICATION • MAINTENANCE  
DRUG FREE COUNSELING • ANTABUSE THERAPY**

**327-4563**



# Zimmerman School News

by Leslie May

The day begins —



Playing at (and in) Soldier's Pond —



So much for log rolling!



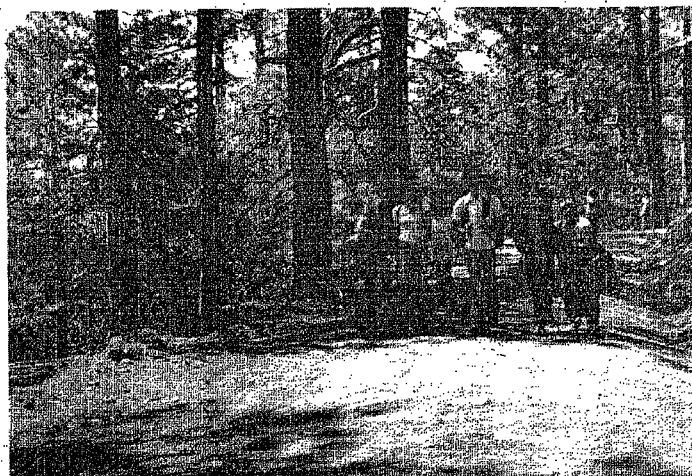
A day of  
helping hands —



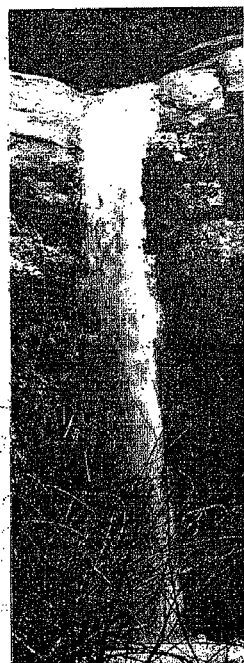
The rescue!



Summing up the day!



Coming home.



...from this

by Tony Morse

We started our hike at Soldier's Pond. We went all the way down to the big waterfall and we ate lunch there.

We played there, but Ruby slid into the water at the first waterfall. Johnny

McClaren caught her by the neck in time before she hit the bottom.

Then we went on down to the bottom of the canyon. We threw rocks into the water. Then we went on to the sticker bushes. Tracey Mercer threw Jenny Hayes

canteen across the stream to her, but Jenny missed it and we never saw it again.

I was going to cross the water, but then my backpack fell in. Jimbo caught it. Then Kenny Rinella jumped in too. We all had a good time.



# Poet's Place

## TO LIFT AND BLESS THE SOUL

If you're troubled and full of care  
And all you want to do — is — "go somewhere!"  
Go to the high mountains and walk among the  
tall trees.  
Perhaps to lie under an Aspen tree on a blanket spread  
on the ground.  
Look up and watch white clouds scuttle by against the  
deep blue sky.  
Be still and listen!  
Soon you may hear the rustle of the Aspen leaves as a  
light breeze flits through the branches overhead.  
When time passes and it's time to go —  
You realize how refreshed you are and you have  
forgotten your cares — they seem — as if long ago.  
As you walk away you know at last —  
You've left all your cares upon the grass.  
Now you truly know your respite there  
Has lifted and blessed your soul.

Lea White

## AMONG THE TALL PINE TREES

There is a tiny house as nice as can be —  
Atop Mt. Lemmon it waits for me.  
When winter with its mantle of white has softly passed  
Come and walk the wooded paths with me and look for  
bits of green so bravely and gaily springing up.  
Listen to the wind as it passes on down a windy sky.  
Soon it will be summer, and there I hope to be.  
To watch the blue-jay and the sway of the  
tall pine trees.

Lea White

## SWEET MEMORIES

A song by Ken(Tiger) Atkinson

Friendship born out of mellow relations  
It doesn't part when true friends do.  
Sweet memories of shared occasions  
They keep shining right on through.

There's time for joy and there's time for sorrow  
You know there's times of in between.  
But always today and then tomorrow  
It's what you'll see and what you've seen

And I'll remember I saw you  
Sweet memories keep shining through  
I'll remember I saw you  
Sweet memories keep shining through

When people feel for one another  
As they're feeling for themselves  
You know it's peace that they'll discover  
Put those fears back on the shelves

And I'll remember I saw you  
Sweet memories keep shining through  
I'll remember I saw you  
Sweet memories keep shining through

Dedicated to Mary and Larry, Chuck, Pam and Mike,  
Doug and Mary Beth, Schizzo, Kim, Sandy, and  
George, Mayor Billy, Tiger, Kenny, Mickey and Martha,  
Flip, Bev, and Judy with love from the Lemmonites.

## SILENCIO

The world is tuned to silence  
The desert and the sea  
That the waves may carry  
The faintest note  
Of the finest songs that be.  
The world is tuned to silence  
Though noise rends the air  
As it was in the beginning  
It shall be in the end  
When nothing else is there.

Bernice O'Crotty

# SPOTLIGHT

(continued from page 2)  
album, I found myself  
trying to picture the early  
women at Soldier's Camp  
walking over the rough  
terrain to the creek to haul  
buckets of water in their  
long dresses. And I was  
thankful that I lived in a  
day when it is acceptable  
for women to wear pants.

She continued her  
story, "Back when I first  
came to the mountain,  
there was not the  
underbrush, and small  
trees there are now. A big  
fire in 1910 almost wiped  
out the mountains. I don't  
remember anything about  
the fire, but for  
years all the big trees had  
metal plaques on them  
saying, 'Remember the  
fire of 1910'."

One of the big changes  
Mrs. Hull saw brought  
about by the road up the  
front side was that  
"people didn't stay all  
summer any more. The  
road made it too easy to  
come up and down."

According to Mrs. Hull  
whose father had worked  
hard to get the front road  
put in, yet never lived to  
see it completed, the  
Lion's Club deserves the  
credit for getting the road.  
The first bond election  
was defeated by the  
mines. The Citizen  
supported it and the Star  
opposed it. But the Lion's  
Club, together with the  
Justice Department and  
General Hitchcock  
deserve the credit for  
getting it built. It was  
almost completed before

World War II, but was shut  
down except to emer-  
gency traffic. The road  
was finally opened to the  
public in 1950.

Even now Mr. and Mrs.  
Hull spend most of the  
summer on the mountain,  
often with a housefull of  
grandchildren. But like  
most current cabin  
owners, they do not  
spend all their time there,  
only about five days each  
week. Mrs. Hull walks a lot  
for his health and they  
take care of the animals  
around their cabin. Most  
of the squirrels eat  
regularly at one of the  
Hull's feeders. And for  
awhile they even fed the  
skunks, although this was  
done a little distance from  
the house. Mrs. Hull  
claims that in all this time  
they have never been  
sprayed by one of these  
creatures.

Birds are another of her  
favorite animals. And she  
has Grosbeaks, Western  
Tanagers, and numerous  
varieties of humming-  
birds among her daily  
visitors to the cabin in the  
summer.

Currently Mrs. Hull is  
compiling her own family  
history of their adven-  
tures in Soldier's Camp.  
She isn't sure what will  
become of it when  
completed, but for one  
certainly hope that it will  
be published so those of  
us interested in the early  
history of the mountains  
can see the pictures and  
read of this one family's  
early experiences.

# V. F. D. Money

(continued from Page 1)

Chairman for the Home-  
owners Assn. and Jack  
Chilson as Fire Chief,  
recently purchased four  
new complete outfits for  
firefighters. This gives the  
Department seven com-  
plete sets. Also, miscel-  
laneous firefighting and  
first-aid equipment was

purchased. A big addition  
which was ordered and  
has now been received on  
the mountain was a  
resuscitator. These pur-  
chases will make the job  
of a volunteer firefighter  
on Mt. Lemmon much  
safer and will help to aid  
victims of fires.

# UNITED

FIRE & SAFETY EQUIPMENT CO.  
Municipal—Industrial—Wholesale—Retail

SUPPLIERS TO MT. LEMMON FIRE DEPT.

335 N. 4th Ave.  
Tucson, Arizona 85705

622-3639

# E. P. A. Postpones Sewer Project

According to Peter J.  
Wojdyla, Project Coordi-  
nator for the Mt. Lem-  
mon Wastewater facility,  
a temporary setback was  
recently received. The  
Environmental Pollution  
Agency ruled that the size  
of the community on Mt.  
Lemmon did not justify  
the expenditure that was  
planned.

According to Mr. Woj-  
dyla, this was as big of a  
surprise to them as it is to  
the property owners on  
the mountain.

A meeting will be  
scheduled with the Forest  
Service in the near future  
to try to reach agreement  
on changes in the original  
plan. Hopefully the post-  
ponement will only be  
slight.

Pima County and the  
E.P.A. have been working  
together for the past  
several years to try to  
come up with a plan to  
stop pollution of Sabino  
Creek. Because of this  
pollution, Marshall Gulch  
has been closed to the  
public since 1976.

Recently Pima County  
announced that plans  
would be put into effect  
and work would start of  
the facility this summer.  
Now with this halt, the  
problem could go on for  
years. During the winter  
floods, the old leaching  
field for the county sewer  
washed away and the raw  
sewage being deposited  
into Sabino Creek ap-  
pears to be worse than  
ever.

# Classifieds

The Mountain Echo's classified ads reach more  
than 2,000 readers. Rates are \$2.00 for the first 10  
words and 10¢ for each additional word.

Call Frances Morse at 791-9733 to place your ad  
today!!

**FOR SALE:** Furnished  
year-round cabin—all  
conveniences. Deeded  
land. Perfect for single  
person or couple. Call  
791-9779.

carpet. Reasonable. Cal  
Bill Dukes, Tucson 325  
0967.

**FOR RENT:** Two bed-  
room furnished cabin  
with fireplace, daily. Call  
791-9723.

**FOR RENT:** One bed-  
room duplex, fireplace,  
full bath, modern kitchen.  
Also two room modern  
efficiency. Daily. Call  
791-9779.

**The Art of carpentry is not  
yet dead.** 10 years  
experience in all facets of  
building. Pat Williams, Mt.  
Lemmon, 791-9840.

**Floors Laid** - vinyl, tile,

**HELP WANTED:** The U.S.  
Forest Service is accept-  
ing applications for po-  
sitions in the Senior  
Conservation Employ-  
ment Program. Appli-  
cants must be 55 years o-  
lder and meet low in-  
come requirement es-  
tablished by the  
Department of Labor.  
Employment will be light  
duty work with flexibl-  
e days and hours. For mor-  
e information, call Denn  
Laplender at Palisade  
Ranger Station, 791-986-  
or Pat Redman at 296  
6245.

**WANTED:** Someone to  
install septic tank, M  
Lemmon. Call 747-8026.



(791-9779)

# SUMMER HAVEN REALTY

PO BOX 45, MT. LEMMON AZ 85619  
MADONNA L. MILLER Broker

# THE MOUNTAIN ECHO

is published twice a month

P. O. Box 48  
Mt. Lemmon, AZ 85619  
(602) 791-9733

Editor &amp; Publisher Frances R. Morse

# THE MOUNTAIN ECHO

1 YEAR SUBSCRIPTION — \$5.00

PLEASE PRINT  
NAME \_\_\_\_\_

ADDRESS \_\_\_\_\_

CITY \_\_\_\_\_

STATE \_\_\_\_\_

ZIP \_\_\_\_\_

Make Checks Payable To:

The Mountain Echo  
P. O. Box 48  
Mt. Lemmon, AZ 85619